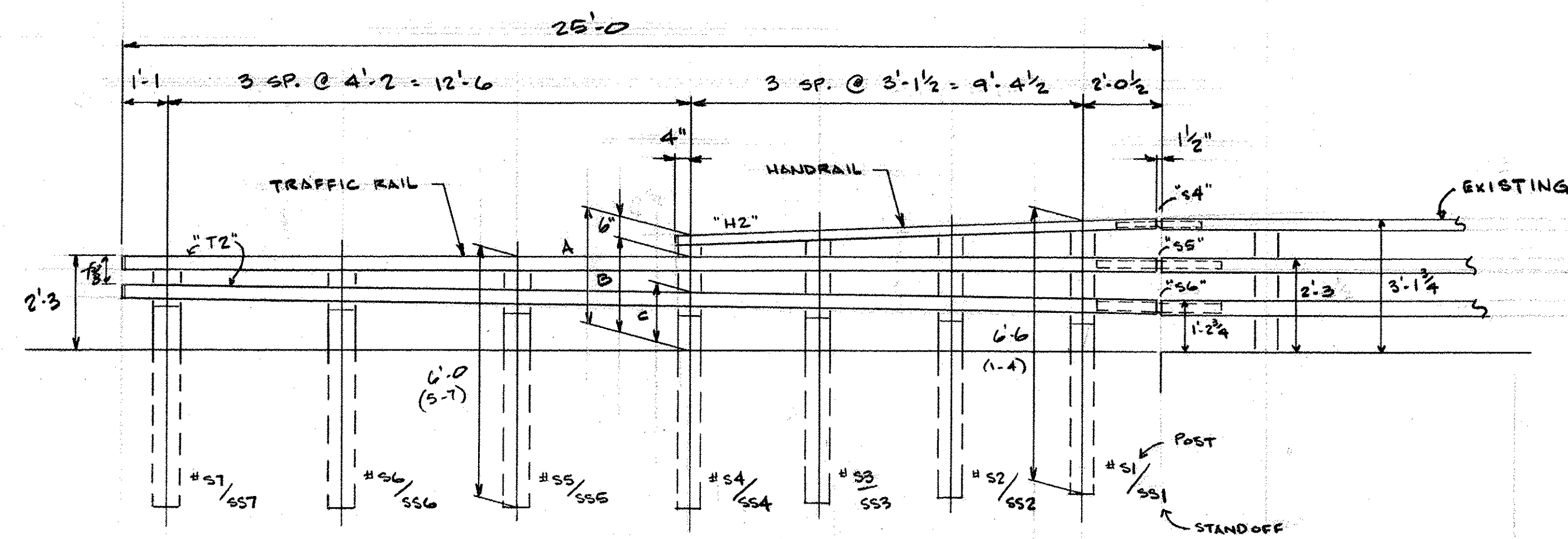


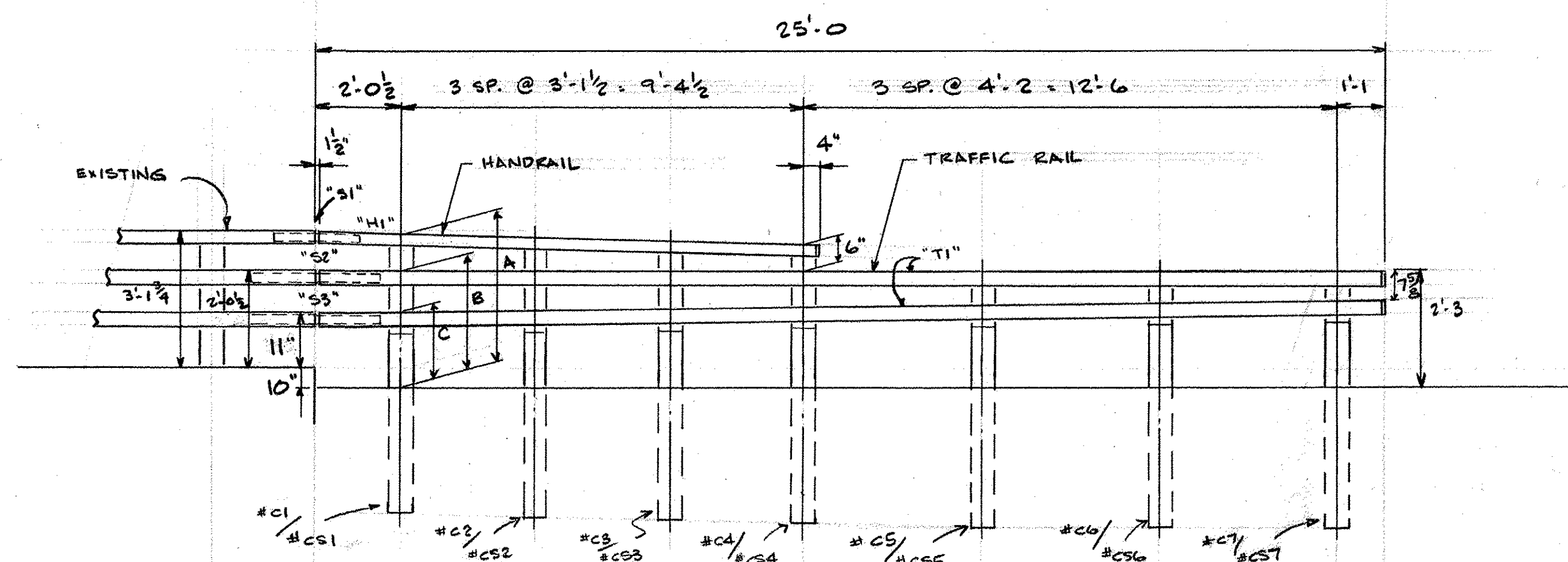
PLAN - #STP 2701(1)

NOTE:  
DIMENSIONS GIVEN ALONG  
FACE OF RAIL.



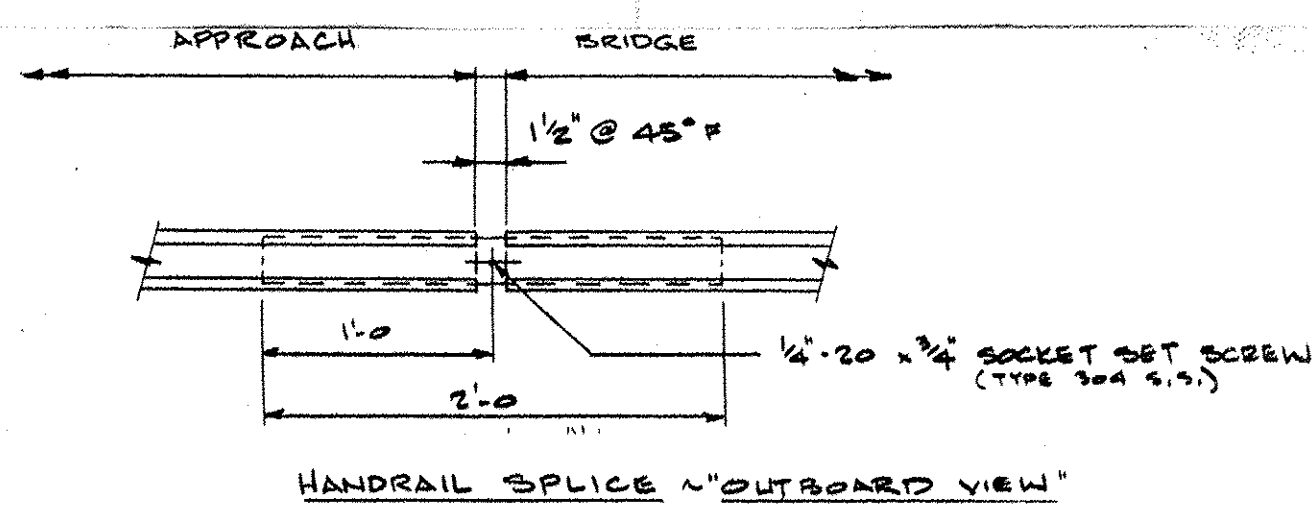
ELEVATION AT "SIDEWALK"

Pc.Mk.	"A"	"B"	"C"
S1	3'-1	2'-3	1'-3 1/16
S2	2'-11 1/16	2'-3	1'-3 1/16
S3	2'-10 5/16	2'-3	1'-4 1/4
S4	2'-9	2'-3	1'-4 3/16
S5	—	2'-3	1'-5 5/8
S6	—	2'-3	1'-6 3/8
S7	—	2'-3	1'-7 3/16

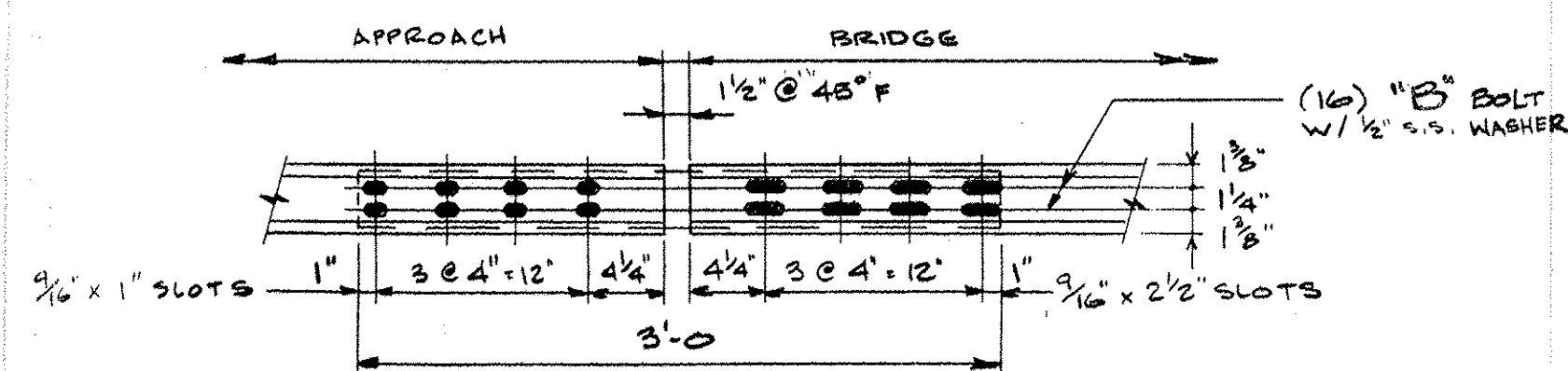


ELEVATION AT "CURB"

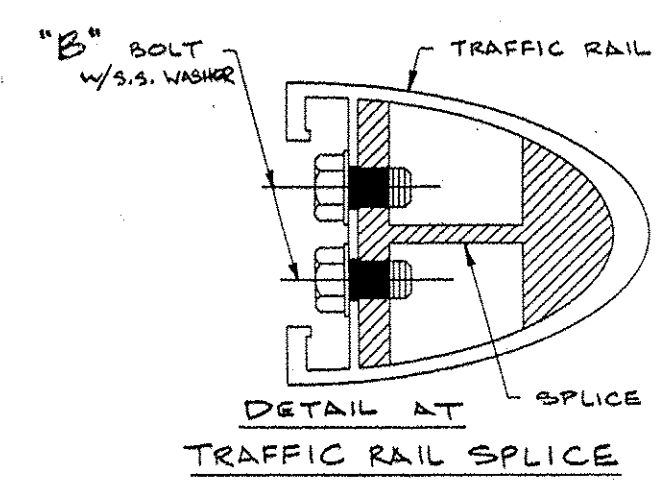
Pc.Mk.	"A"	"B"	"C"
C1	3'-10 1/8	2'-10	1'-8 3/8
C2	3'-7 1/8	2'-9	1'-8 1/16
C3	3'-4 1/8	2'-8 1/16	1'-8 1/2
C4	3'-1 1/8	2'-7 1/8	1'-8 1/4
C5	—	2'-5 1/8	1'-8
C6	—	2'-4 3/8	1'-7 3/4
C7	—	2'-3 3/16	1'-7 1/16



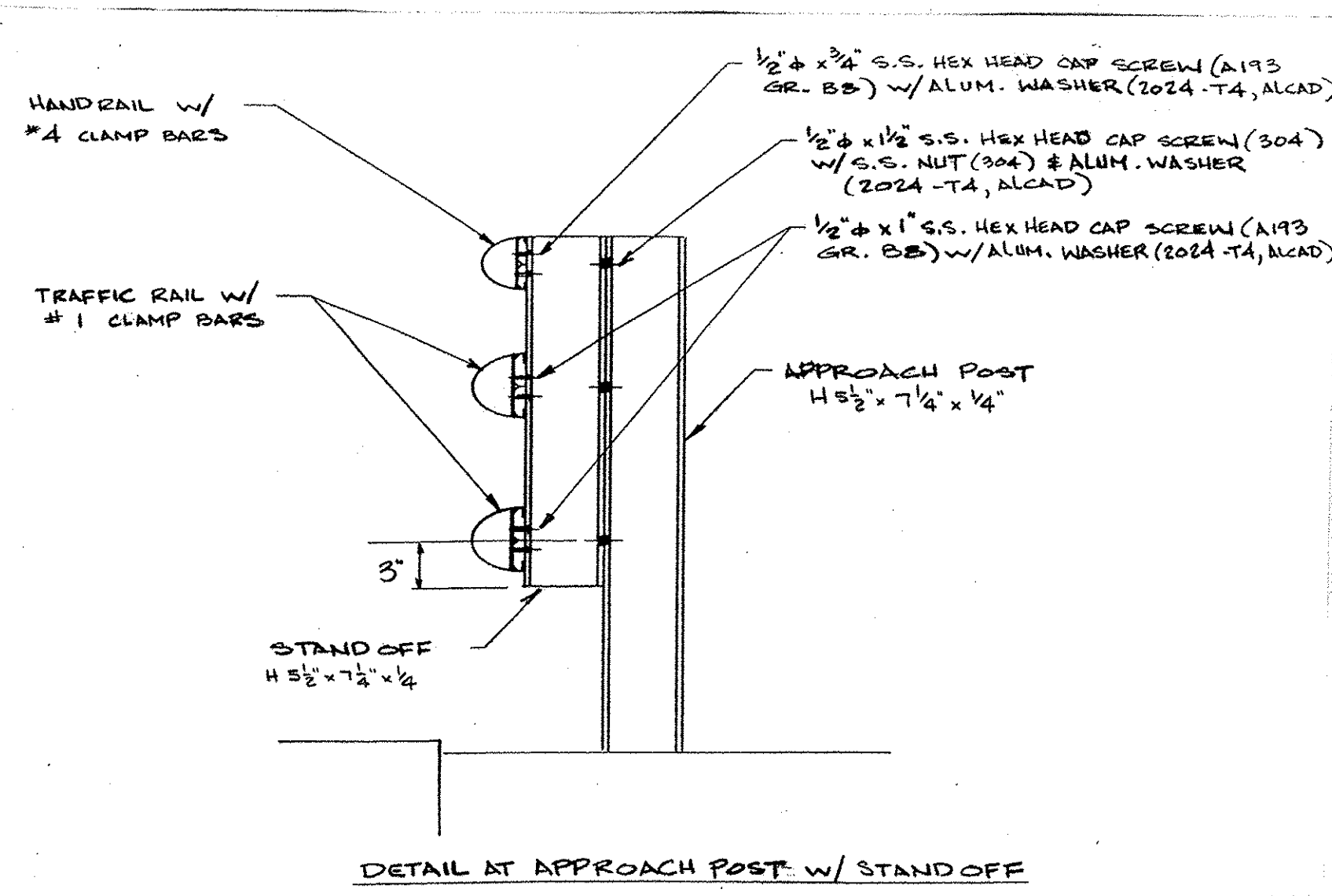
HANDRAIL SPLICE "OUTBOARD VIEW"



TRAFFIC RAIL SPLICE "OUTBOARD VIEW"



DETAIL AT TRAFFIC RAIL SPLICE



DETAIL AT APPROACH POST W/ STANDOFF

**AUCIELLO IRON WORKS INC**  
560 MAIN ST. HUDSON, MA (978) 568-8382

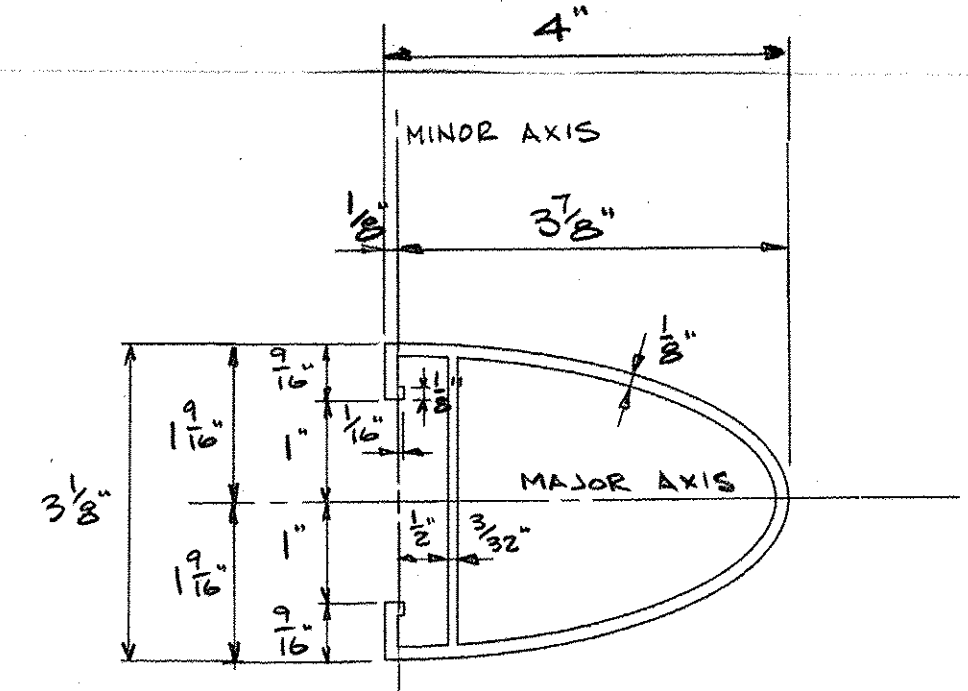
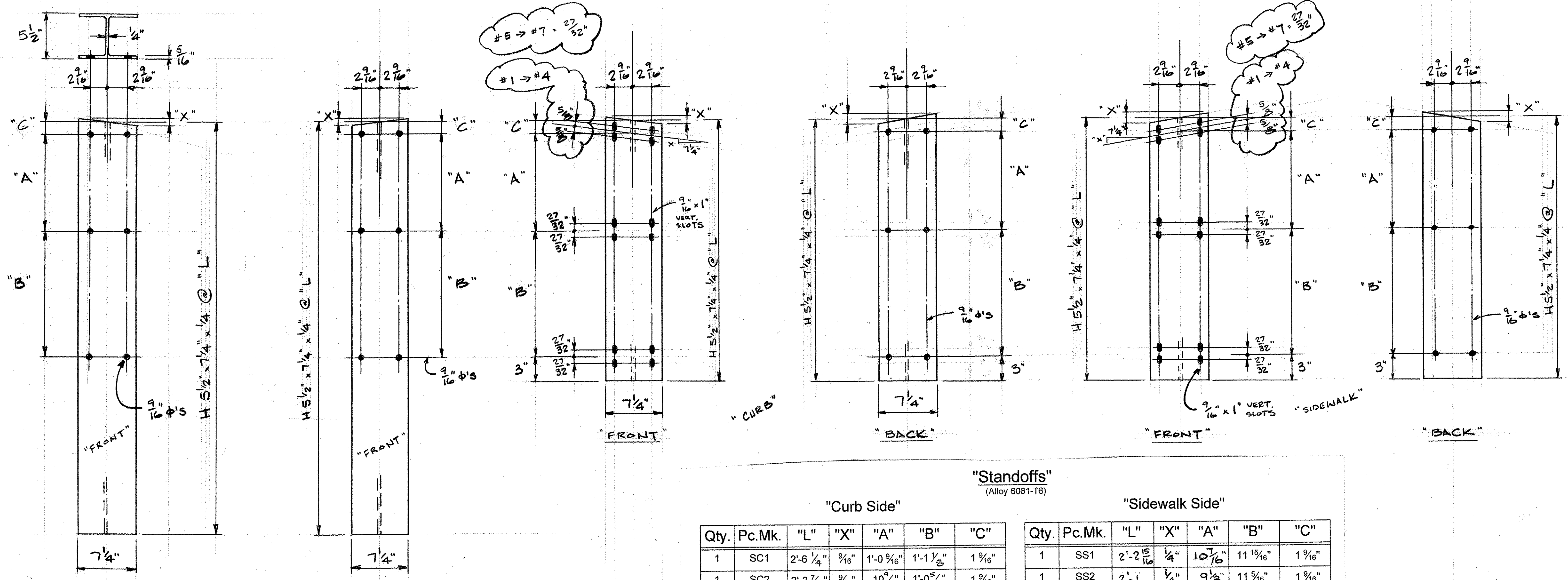
VERMONT AGENCY OF TRANSPORTATION  
HARTFORD #STP 2701(1)  
RT. 14

ALUMINUM APPROACH RAILING

SURFACE PREP: NONE FINISH: MILL

FOR: VERMONT RECREATIONAL  
DR: BPP 2/18/09 DWG. NO.  
CHK: WM 7/10/09 BR-2961

1 7-10-09 FOR APPROVAL  
ISSUE DATE DESCRIPTION BY  
JOB NO. AB97062-1001 SHEET 1 OF 3



DETAIL AT HANDRAIL  
ALLOY 6061-T6

"Standoffs"  
(Alloy 6061-T6)

"Curb Side"

Qty.	Pc.Mk.	"L"	"X"	"A"	"B"	"C"
1	SC1	2'-6 1/4"	3/16"	1'-0 3/16"	1'-1 1/8"	1 1/16"
1	SC2	2'-3 3/16"	3/16"	10 3/16"	1'-0 5/16"	1 1/16"
1	SC3	2'-0 5/8"	3/16"	8 1/2"	11 3/16"	1 1/16"
1	SC4	1'-9 7/8"	3/16"	6 7/8"	10 7/8"	1 1/16"
1	SC5	1'-2 7/8"	3/16"	—	9 7/8"	2"
1	SC6	1'-1 7/8"	3/16"	—	8 7/8"	2"
1	SC7	1'-0 7/8"	3/16"	—	7 7/8"	2"

"Sidewalk Side"

Qty.	Pc.Mk.	"L"	"X"	"A"	"B"	"C"
1	SS1	2'-2 5/16"	1/4"	10 7/16"	11 15/16"	1 1/16"
1	SS2	2'-1 1/4"	1/4"	9 9/8"	11 15/16"	1 1/16"
1	SS3	1'-11 1/16"	1/4"	7 3/4"	10 3/4"	1 1/16"
1	SS4	1'-9 3/16"	1/4"	6 7/16"	10 3/8"	1 1/16"
1	SS5	1'-2 3/8"	0	—	9 3/8"	2"
1	SS6	1'-1 5/8"	0	—	8 5/8"	2"
1	SS7	1'-0 13/16"	0	—	7 13/16"	2"

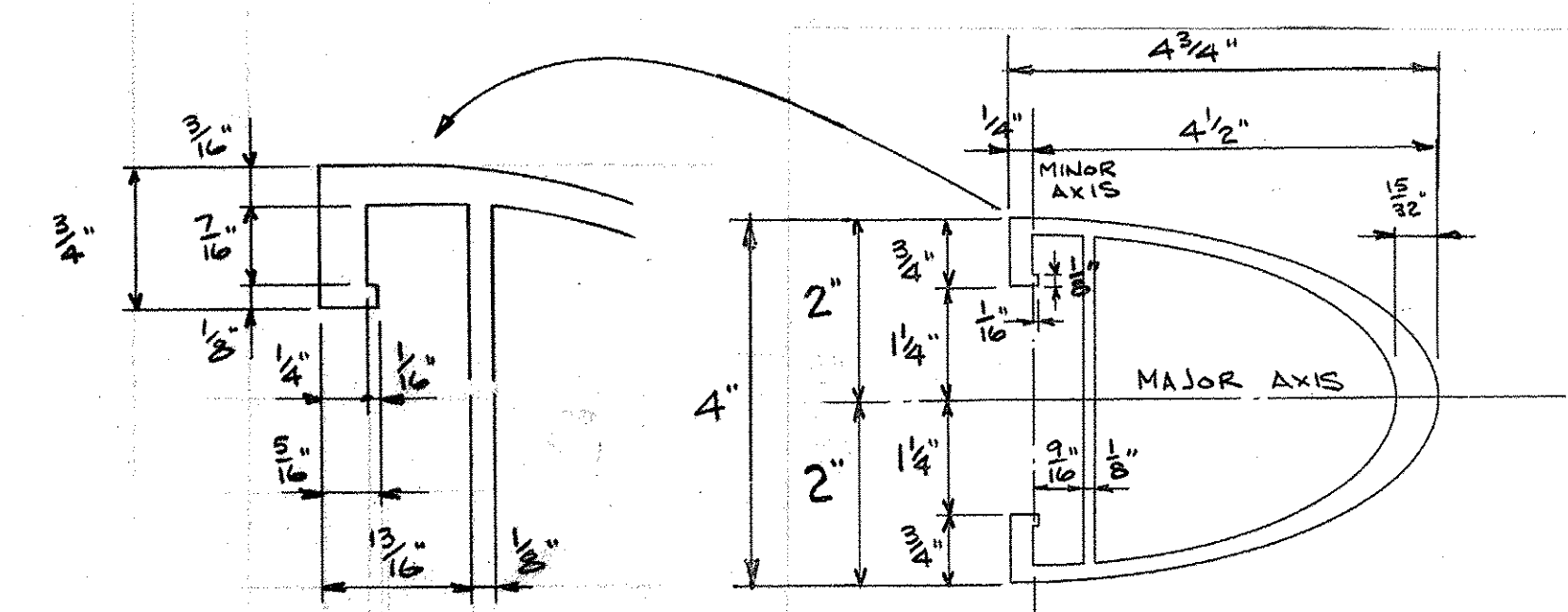
"Approach Posts"  
(Alloy 6061-T6)

"Curb Side"

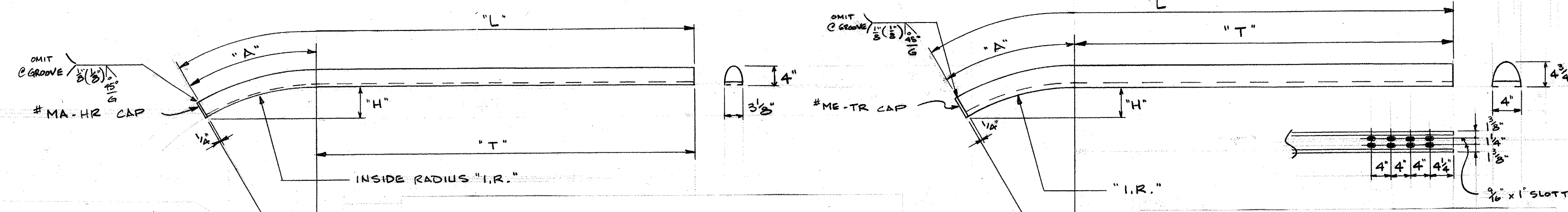
Qty.	Pc.Mk.	"L"	"X"	"A"	"B"	"C"
1	C1	6'-6"	3/16"	1'-0 9/16"	1'-1 1/8"	1 1/16"
1	C2	6'-6"	3/16"	10 3/16"	1'-0 3/8"	1 1/16"
1	C3	6'-6"	3/16"	8 1/2"	11 1/16"	1 1/16"
1	C4	6'-6"	3/16"	6 7/8"	10 7/8"	1 1/16"
1	C5	6'-0"	3/16"	—	9 7/8"	2"
1	C6	6'-0"	3/16"	—	8 7/8"	2"
1	C7	6'-0"	3/16"	—	7 7/8"	2"

"Sidewalk Side"

Qty.	Pc.Mk.	"L"	"X"	"A"	"B"	"C"
1	S1	6'-6"	1/4"	10 7/16"	11 15/16"	1 1/16"
1	S2	6'-6"	1/4"	9 9/8"	11 15/16"	1 1/16"
1	S3	6'-6"	1/4"	7 3/4"	10 3/4"	1 1/16"
1	S4	6'-6"	1/4"	6 7/16"	10 3/8"	1 1/16"
1	S5	6'-0"	0	—	9 3/8"	2"
1	S6	6'-0"	0	—	8 5/8"	2"
1	S7	6'-0"	0	—	7 13/16"	2"

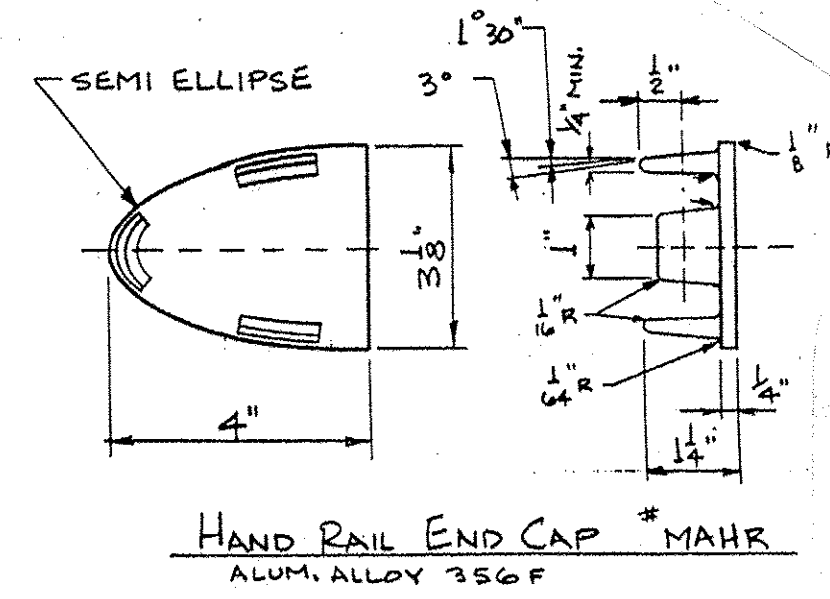


DETAIL AT TRAFFIC RAIL  
ALLOY 6061-T6



Qty.	Pc.Mk.	"L"	"T"	"A"	"I.R."	"H"
ONE	H1	11'-8 3/4"	8'-10 1/2"	2'-10 1/4"	23'-2 1/2"	2 1/16"
ONE	H2	11'-8 3/4"	7'-10 1/2"	3'-10 1/4"	10'-2 5/8"	8 5/8"

Qty.	Pc.Mk.	"L"	"T"	"A"	"I.R."	"H"
2	T1	24'-11 3/4"	8'-10 1/2"	16'-1 1/4"	23'-2 1/2"	5'-3 1/8"
2	T2	24'-11 3/4"	7'-10 1/2"	17'-1 1/4"	10'-2 5/8"	11'-3 1/4"



HAND RAIL END CAP # MAHR  
ALUM. ALLOY 356 F

**AUCIELLO IRON WORKS INC**  
560 MAIN ST. HUDSON, MA (978) 568-8382

VERMONT AGENCY OF TRANSPORTATION  
HARTFORD #STP 2701(1)  
ROUTE 14

ALUMINUM APPROACH RAIL

SURFACE PREP: NONE	FINISH: MILL
FOR: VERMONT RECREATIONAL	
DR: 6/17/09	DWG. NO.
CHK: 7-10-09	BR-2961
JOB NO.	SHEET 2 OF 3

1	7-10-09	FOR APPROVAL	
ISSUE	DATE	DESCRIPTION	BY

