

REHAB. Dis. CBs OR MHS. CLASS I OR II  
SEE SHEET 13

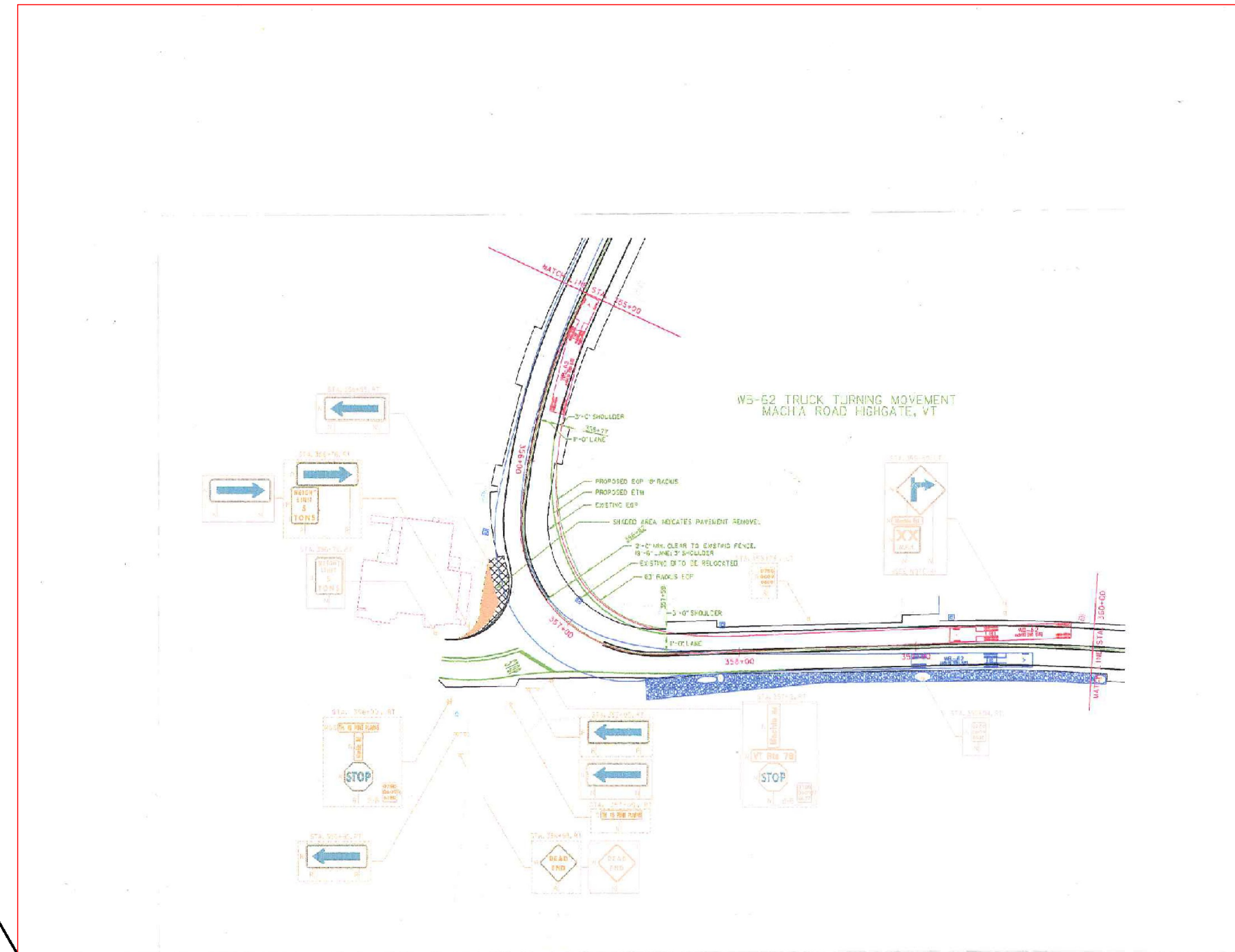
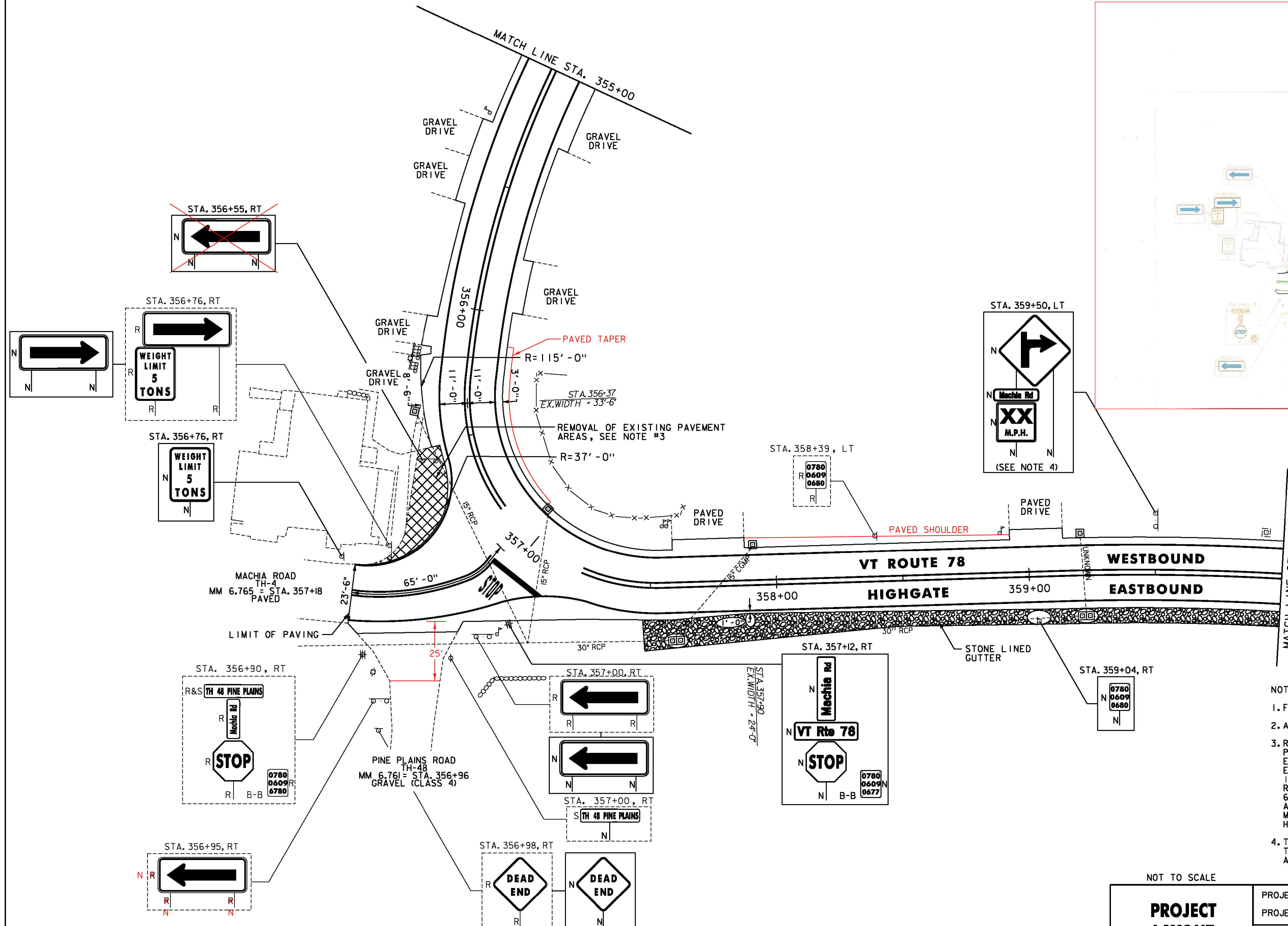
TEMPORARY 4 INCH WHITE LINE, PAINT  
DURABLE 4 INCH WHITE LINE (OPTION BID ITEM)  
(ALL LINES WILL INCLUDE EDGE LINE BREAKS  
AND RADII FOR SIDE ROADS)  
STA. 355+00 TO 360+00, SOLID LT & RT  
STA. 357+18, SOLID RT (EDGELINES, MACHIA ROAD, TH-4)

TEMPORARY 4 INCH YELLOW LINE, PAINT  
DURABLE 4 INCH YELLOW LINE (OPTION BID ITEM)  
(ALL LINES WILL INCLUDE G BREAKS FOR SIDE ROADS)  
STA. 355+00 TO 360+00, SOLID LT & RT  
STA. 357+18, DOUBLE SOLID RT (MACHIA ROAD, TH-4)

TEMPORARY 24 INCH STOP BAR, PAINT  
DURABLE 24 INCH STOP BAR (OPTION BID ITEM)  
STA. 357+18, (MACHIA ROAD, TH-4)  
TEMPORARY TEMPORARY LETTER OR SYMBOL, PAINT  
DURABLE LETTER OR SYMBOL (OPTION BID ITEM)  
STA. 357+18, (MACHIA ROAD, TH-4)

REMOVING SIGNS  
AS SHOWN - 10

ERECTING SALVAGED SIGNS  
AS SHOWN - 1



- NOTES:
1. FOR LEGENDS, SEE SHEET 19.
  2. ALL EXISTING SIGNS NOT SHOWN SHALL BE RETAINED.
  3. REMOVE 4 INCHES OF EXISTING PAVEMENT AS SHOWN. PAYMENT TO BE MADE UNDER ITEM 203.15 - COMMON EXCAVATION. IF LESS THAN 4 INCHES OF PAVEMENT IS ENCOUNTERED, REMOVAL OF SUBBASE SHALL BE PAID UNDER ITEM 203.15 - COMMON EXCAVATION. REPLACE WITH 4 INCHES OF ITEM 651.35 - TOPSOIL, 651.15 - SEED, 651.18 - FERTILIZER, 651.20 - AGRICULTURAL LIMESTONE AND 653.20 - TEMPORARY EROSION MATTING. ESTIMATED QUANTITIES OF THE INDICATED ITEMS HAVE BEEN INCLUDED FOR USE AS DIRECTED BY THE ENGINEER.
  4. THE ADVISORY SPEED SHALL BE DETERMINED AS DIRECTED BY THE ENGINEER USING AN ESTABLISHED ENGINEERING PRACTICE AS LISTED IN SECTION 2C.08 OF THE MUTCD.

NOT TO SCALE

**PROJECT LAYOUT SHEET #49**

PROJECT NAME:	SWANTON-SHELDON
PROJECT NUMBER:	STP 2715(I)
FILE NAME:	p07cl86.dgn
PROJECT LEADER:	G. EDWARDS
DESIGNED BY:	G. BARRETT
PLOT DATE:	4/24/2014
DRAWN BY:	G. BARRETT
CHECKED BY:	M. FOISY
SHEET 67 OF 121	

