

PORTLAND CEMENT CONCRETE SIDEWALK, 5 INCH  
STA. 390+76 TO 390+98, LT

DETECTABLE WARNING SURFACE  
STA. 390+90, LT

TEMPORARY 4 INCH WHITE LINE, PAINT  
DURABLE 4 INCH WHITE LINE (OPTION BID ITEM)  
(ALL LINES WILL INCLUDE E BREAKS FOR SIDE ROADS)  
STA. 389+87.52 TO 393+50, SOLID LT & RT  
STA. 389+87.52 TO 390+80, SOLID RT (LANE LINE)  
STA. 391+53, SOLID LT (EDGELINES, MISSISSQUOI STREET, TH-73)  
STA. 391+53, SOLID LT (LANE LINE, MISSISSQUOI STREET, TH-73)  
STA. 391+53, SOLID RT (EDGELINES, ROBIN HOOD DRIVE, TH-69)  
STA. 392+01 TO 393+50, SOLID LT (LANE LINES) (2)

TEMPORARY 4 INCH YELLOW LINE, PAINT  
DURABLE 4 INCH YELLOW LINE (OPTION BID ITEM)  
(ALL LINES WILL INCLUDE E BREAKS FOR SIDE ROADS)  
STA. 389+87.52 TO 390+80, DOUBLE SOLID LT  
STA. 391+53, DOUBLE SOLID LT (MISSISSQUOI STREET, TH-73)  
STA. 391+53, DOUBLE SOLID RT (ROBIN HOOD DRIVE, TH-69)  
STA. 391+99 TO 393+50, DOUBLE SOLID RT

TEMPORARY 24 INCH STOP BAR, PAINT  
DURABLE 24 INCH STOP BAR (OPTION BID ITEM)  
STA. 390+81, RT  
STA. 391+53, LT (MISSISSQUOI STREET, TH-73)  
STA. 391+53, LT (MISSISSQUOI STREET, TH-73)  
STA. 391+53, RT (ROBIN HOOD DRIVE, TH-69)  
STA. 392+00, LT

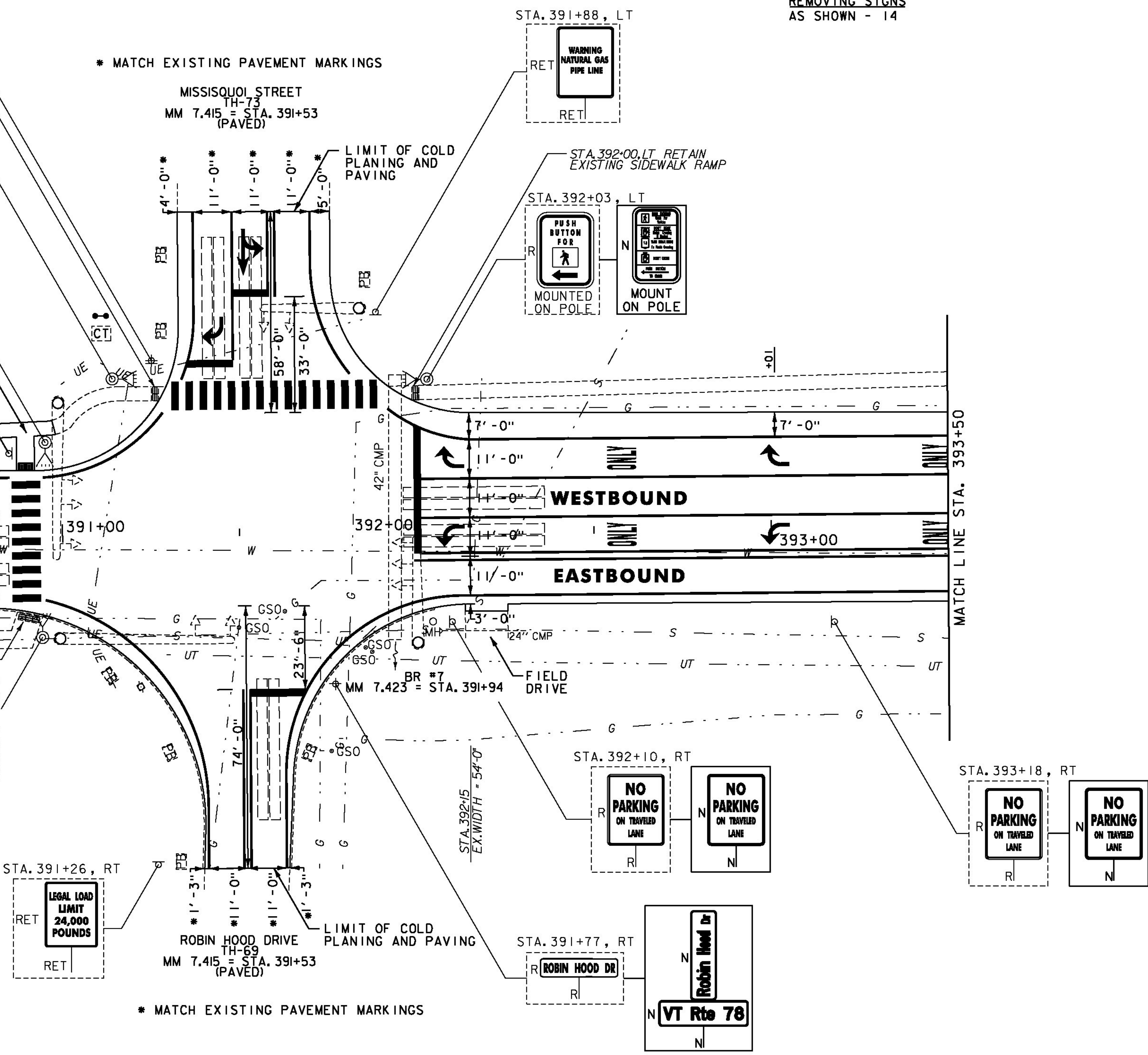
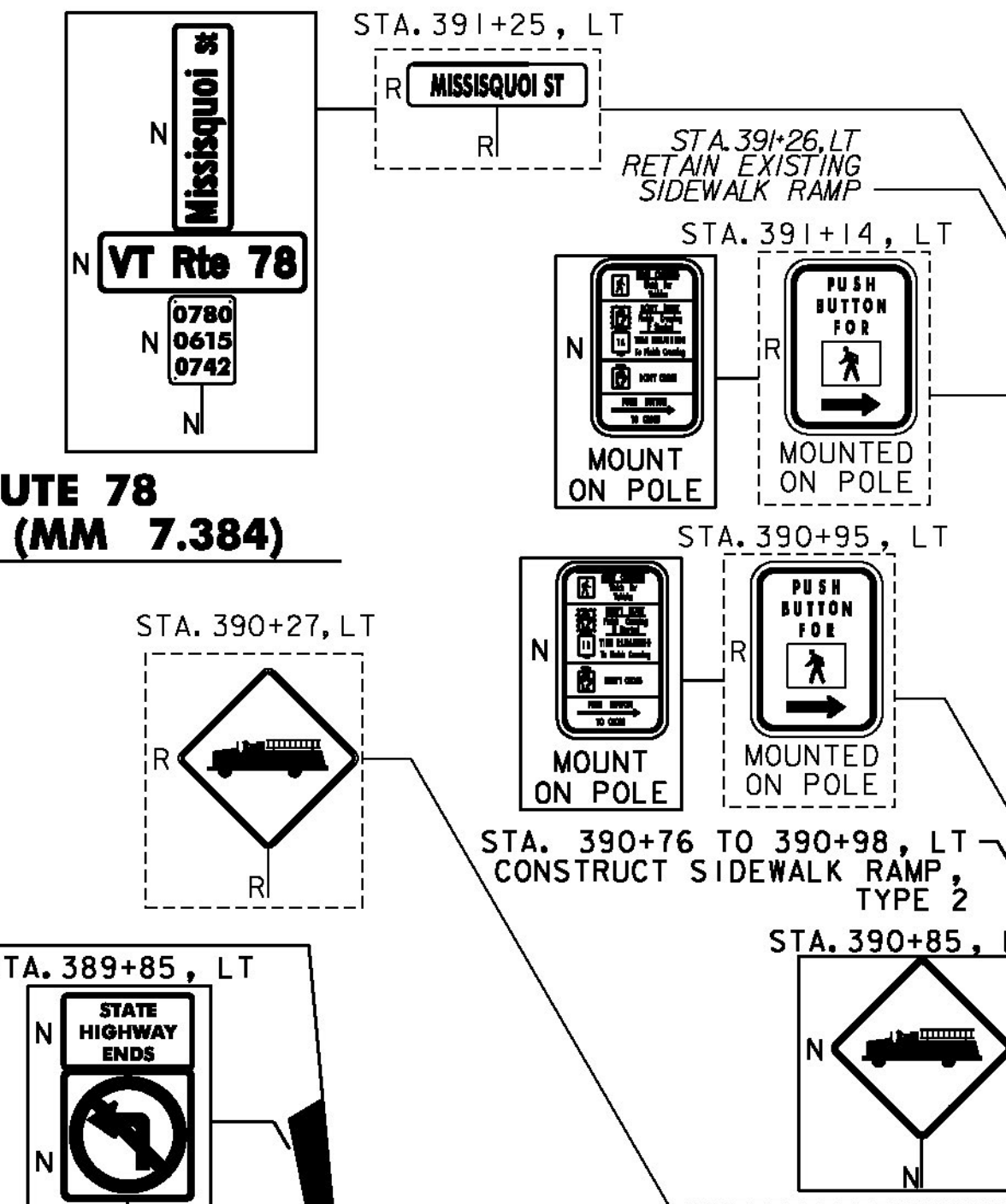
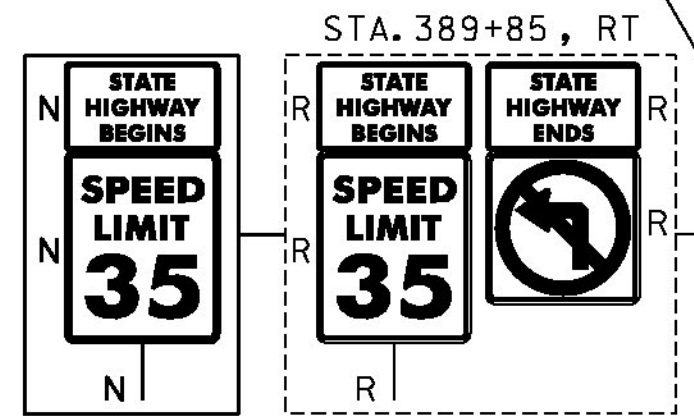
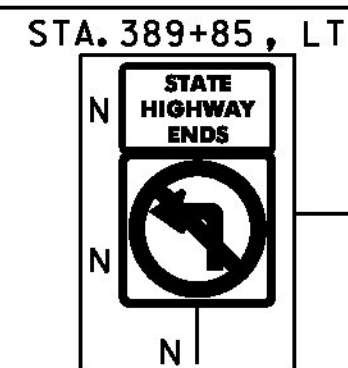
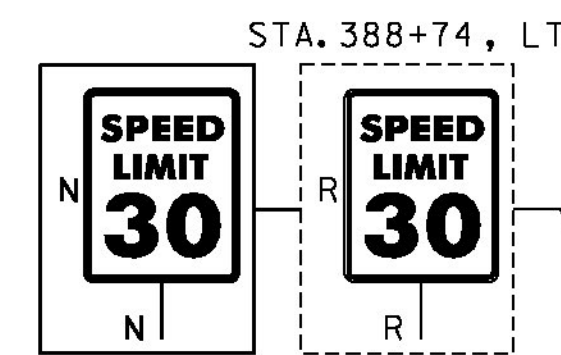
DURABLE LETTER OR SYMBOL (OPTION BID ITEM)  
STA. 390+15, RT "ONLY"  
STA. 390+72, RT ARROW  
STA. 391+53, LT ARROW (3)  
(MISSISSQUOI STREET, TH-73)  
STA. 392+09, LT ARROW (2)  
STA. 392+58, LT "ONLY" (2)  
STA. 393+02, LT ARROW (2)  
STA. 393+47, LT "ONLY" (2)

TEMPORARY CROSSWALK MARKING, PAINT  
DURABLE CROSSWALK MARKING (OPTION BID ITEM)  
STA. 390+90, LT TO RT  
STA. 391+53, LT (MISSISSQUOI STREET, TH-73)  
SEE SHEET 16 TYPICAL

TEMPORARY LETTER OR SYMBOL, PAINT  
STA. 390+72, RT ARROW  
STA. 391+53, LT ARROW (3)  
(MISSISSQUOI STREET, TH-73)  
STA. 392+09, LT ARROW (2)  
STA. 393+02, LT ARROW (2)

REMOVING SIGNS  
AS SHOWN - 14

**BEGIN STP 2715(I) VT ROUTE 78  
SWANTON STA. 389+87.52 = (MM 7.384)**



- GENERAL LEGEND**
- UE - = EXISTING UNDERGROUND ELECTRIC
  - UEC - = EXISTING UNDERGROUND COMCAST CABLE
  - UT - = EXISTING UNDERGROUND TELEPHONE MARKER POST
  - UT - = EXISTING UNDERGROUND TELEPHONE
  - S - = EXISTING SEWER LINE
  - G - = EXISTING GAS LINE
  - W - = EXISTING WATER LINE
  - MW ⊙ = EXISTING MONITORING WELL
  - = EXISTING POWER STANCHION
  - WSO = EXISTING WATER SHUT OFF
  - GSO = EXISTING GAS SHUT OFF
  - SMH = EXISTING SEWER MANHOLE
  - = PROPOSED TRUNCATED DOMES
  - ▣ = EXISTING TRUNCATED DOMES
  - ◇ = EXISTING HYDRANT
  - ▲ = PROPOSED PEDESTRIAN SIGNAL HEADS
  - △ = EXISTING PEDESTRIAN SIGNAL HEADS
  - = PROPOSED DI
  - ▣ = EXISTING DI
  - ⊙ = EXISTING UTILITY POLE
  - ⊙ = EXISTING UTILITY POLE W/ GUY WIRE
  - = PROPOSED GUARDRAIL
  - = EXISTING PIPE
  - = EXISTING HEADWALL
  - ⊙ = EXISTING MAILBOX
  - ⊙ = SINGLE SIGN POST - SINGLE SIGN
  - ⊙ = SINGLE SIGN POST - MULTIPLE SIGNS
  - ⊙ = DOUBLE SIGN POST
  - ⊙ = EXISTING TREE
  - x-x- = EXISTING FENCE
  - = PROPOSED SLOPE EROSION REPAIR AREAS. SEE SHEET 17 FOR DETAILS

- SIGN LEGEND**
- N = NEW
  - R = REMOVE
  - S = SALVAGED
  - RET = RETAIN
  - B-B = BACK TO BACK

- NOTES:**
1. ALL EXISTING SIGNS NOT SHOWN SHALL BE RETAINED.
  2. ALL GAS VALVES ARE TO BE ADJUSTED BY OTHERS.
  3. ALL UTILITY LOCATIONS SHOWN ARE APPROXIMATE AND SHOULD BE VERIFIED PRIOR TO ANY WORK COMMENCING.
  4. SEE SHEET 120 FOR TRAFFIC SIGNAL DETAILS.



NOT TO SCALE  
**PROJECT LAYOUT SHEET #1**

|                               |                      |
|-------------------------------|----------------------|
| PROJECT NAME: SWANTON-SHELDON | PLOT DATE: 4/24/2014 |
| PROJECT NUMBER: STP 2715(I)   | DRAWN BY: G. BARRETT |
| FILE NAME: p07cl86.dgn        | CHECKED BY: M. FOISY |
| DESIGNED BY: G. BARRETT       | SHEET 19 OF 121      |