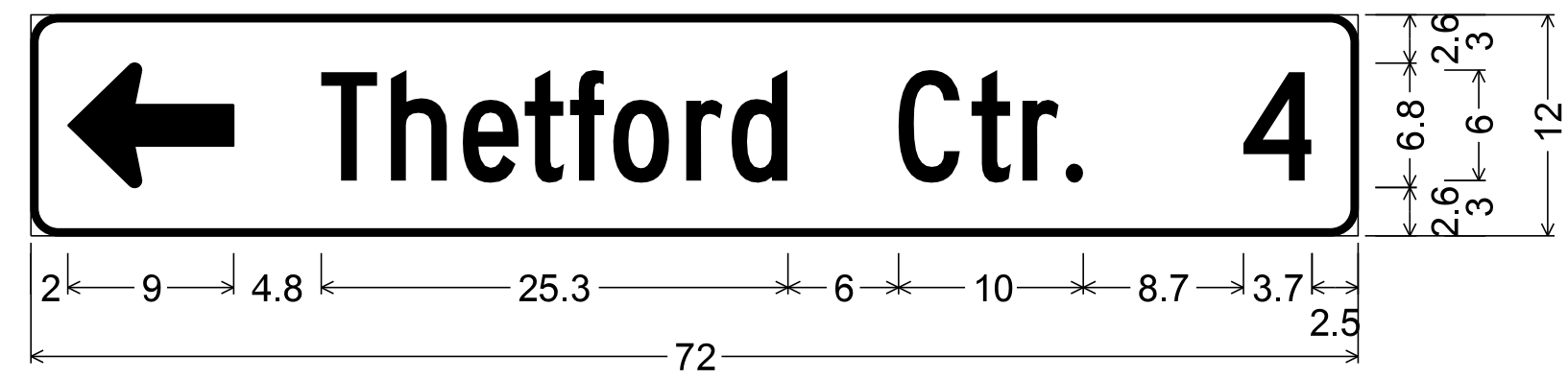
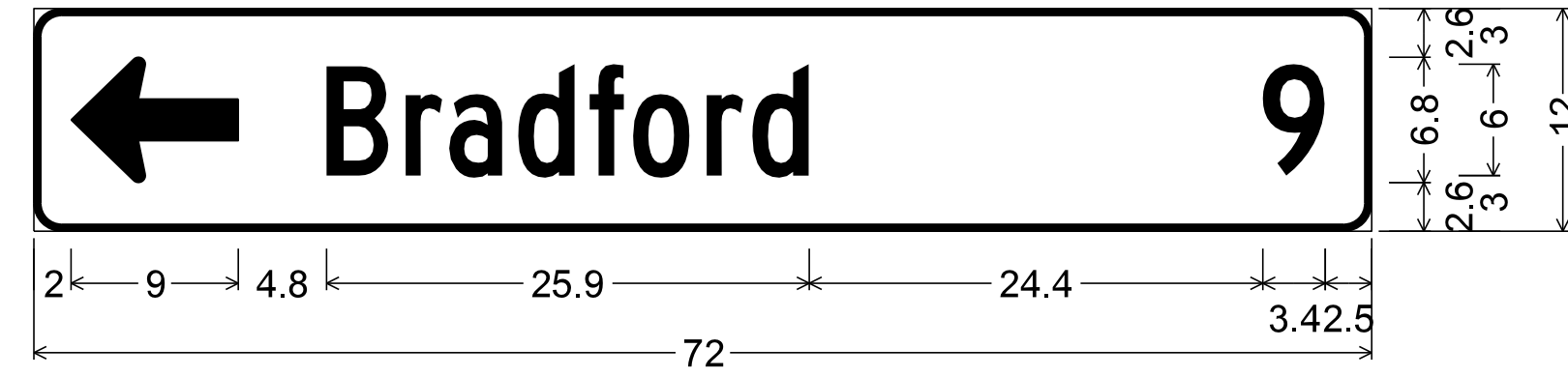


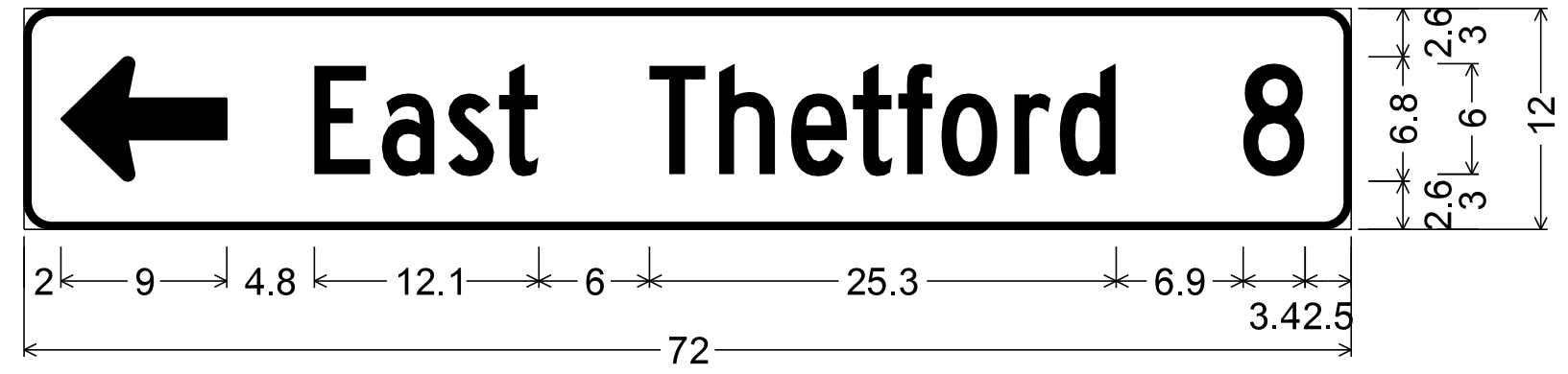
1.5" Radius, 0.4" Border, White on Green;
Standard Arrow Custom 9.0" X 6.8" 180°; [Fairlee] C 2K; [3] C 2K;



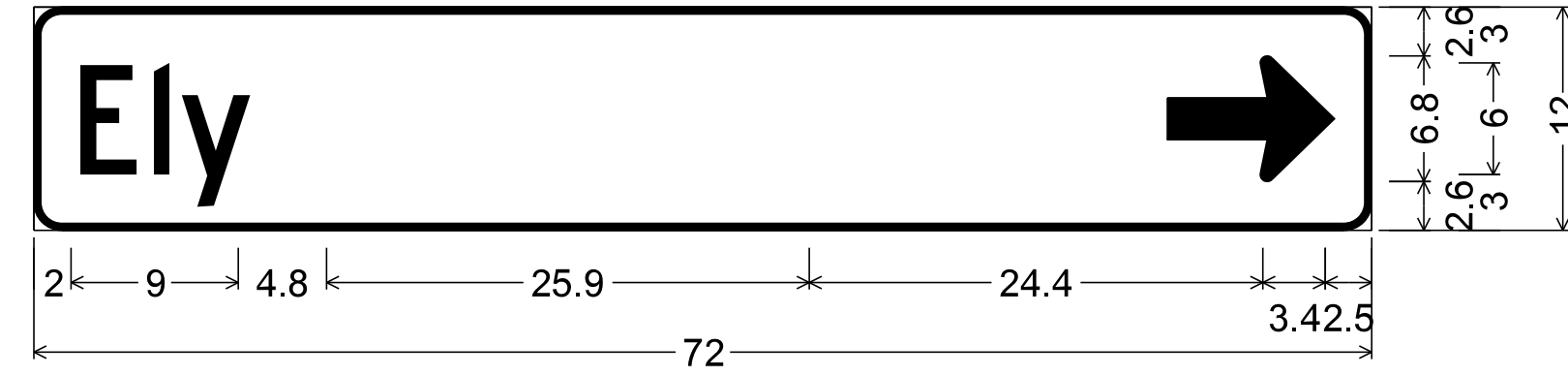
1.5" Radius, 0.4" Border, White on Green;
Standard Arrow Custom 9.0" X 6.8" 180°; [Thetford Ctr.] C 2K;
[4] C 2K;



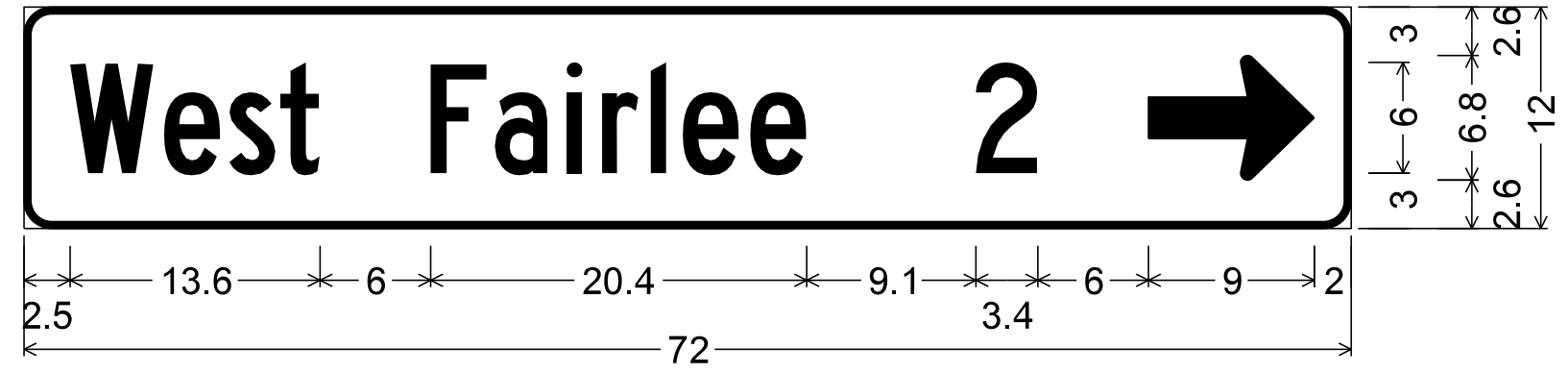
1.5" Radius, 0.4" Border, White on Green;
Standard Arrow Custom 9.0" X 6.8" 180°; [Bradford] C 2K; [9] C 2K;



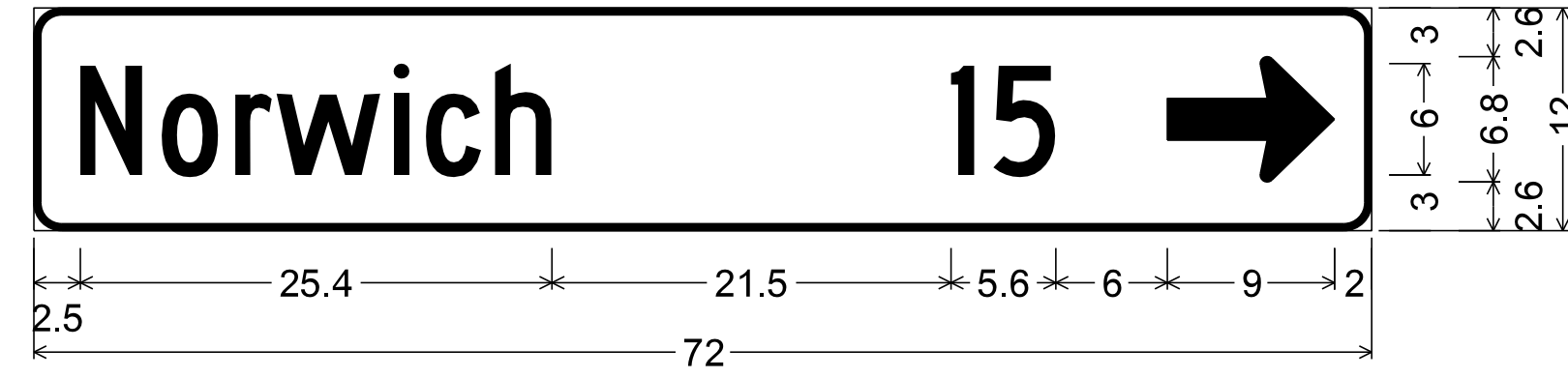
1.5" Radius, 0.4" Border, White on Green;
Standard Arrow Custom 9.0" X 6.8" 180°; [East Thetford] C 2K;
[8] C 2K;



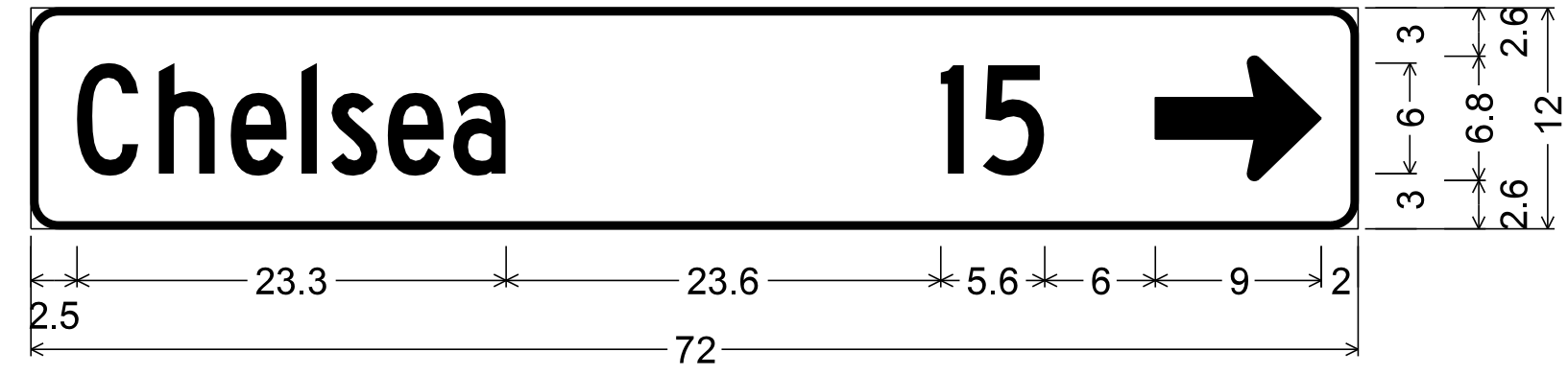
1.5" Radius, 0.4" Border, White on Green;
Standard Arrow Custom 9.0" X 6.8" 180°;



1.5" Radius, 0.4" Border, White on Green;
[West Fairlee] C 2K; [2] C 2K;
Standard Arrow Custom 9.0" X 6.8" 0°;



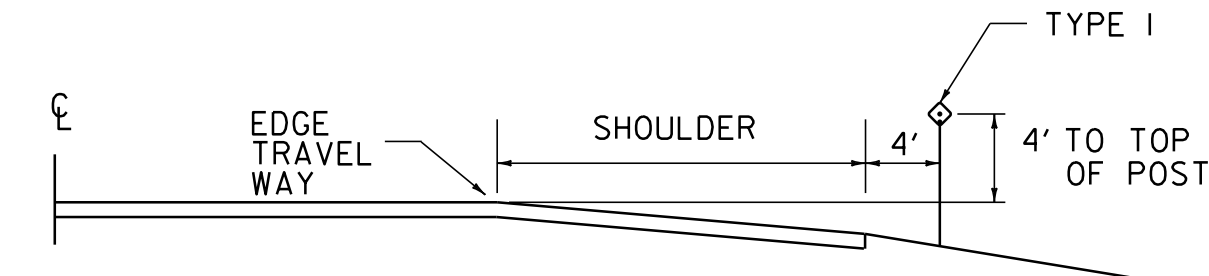
1.5" Radius, 0.4" Border, White on Green;
[Norwich] C 2K; [15] C 2K; Standard Arrow Custom 9.0" X 6.8" 0°;



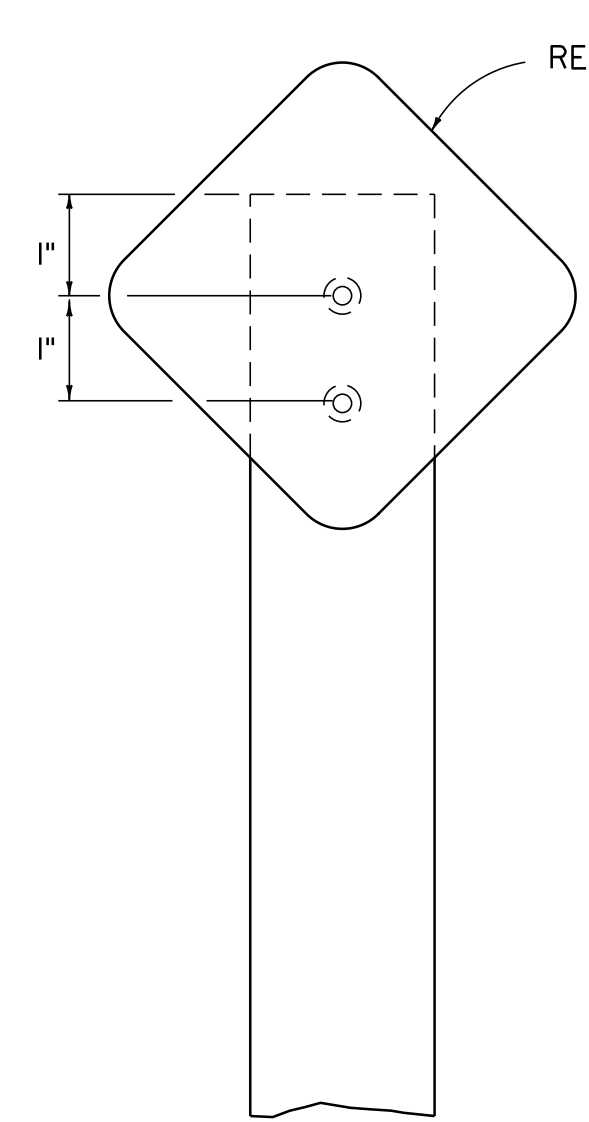
1.5" Radius, 0.4" Border, White on Green;
[Chelsea] C 2K; [15] C 2K; Standard Arrow Custom 9.0" X 6.8" 0°;

DESTINATION SIGN NOTES D1-1, D1-1A

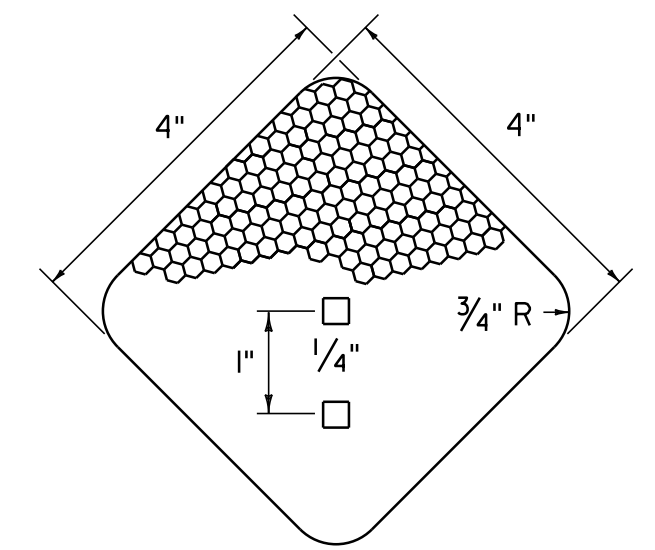
THE DESTINATION SIGNS SHOWN ON THIS SHEET SHALL HAVE WHITE RETROREFLECTIVE ASTM TYPE III OR IV TEXT, ARROWS AND BORDERS ON A GREEN RETROREFLECTIVE ASTM TYPE III OR IV BACKGROUND



TYPICAL PLACEMENT OF DELINEATORS ON HIGHWAY



TYPE I



DELINEATOR REFLECTIVE SHEETING UNIT

MATERIAL FOR DELINEATORS:
• 1/16" ALUMINUM BACKING,
• WHITE/BLUE/GREEN: ASTM TYPE III RETROREFLECTIVE SHEETING.

DELINEATOR NOTES

- TYPE I DELINEATOR (WHITE) SHALL BE ERECTED AT LOCATIONS AS SHOWN ON THE ROADWAY LAYOUTS. TYPE I DELINEATORS WITHOUT PLAQUE SHALL BE ERECTED AT THE BEGINNING (BLUE) AND AT THE END (GREEN) OF EACH GUARDRAIL RUN.
- DELINEATOR POSTS SHALL BE 1.75" x 1.88 LB/FT SQUARE STEEL, AND A MINIMUM OF 8 FEET LONG.
- DELINEATOR POSTS SHALL HAVE A MINIMUM EMBEDMENT OF 2'-6" IN THE GROUND.

SIGN DETAILS 3

PROJECT NAME: THETFORD-FAIRLEE	
PROJECT NUMBER: STP 2710(I)	
FILE NAME: /pave/07c184/pci84	PLOT DATE: 14-OCT-2013 16:36
PROJECT LEADER: PTS	DRAWN BY: WWG
DESIGNED BY: NLL	CHECKED BY: PTS
IPARM FILE NAME: 07C184_77	SHEET 76 OF 77

NOT TO SCALE