

646.602 TEMPORARY 4" WHITE LINE, PAINT  
 646.402 DURABLE 4" WHITE LINE, THERMOPLASTIC  
 646.403 DURABLE 4" WHITE LINE, EPOXY PAINT  
 646.404 DURABLE 4" WHITE LINE, POLYUREA  
 F134+50 TO F139+16 SOLID LT  
 F134+50 TO F139+42 SOLID RT  
 646.612 TEMPORARY 4" YELLOW LINE, PAINT  
 646.412 DURABLE 4" YELLOW LINE, THERMOPLASTIC  
 646.413 DURABLE 4" YELLOW LINE, EPOXY PAINT  
 646.414 DURABLE 4" YELLOW LINE, POLYUREA  
 F134+50 TO F139+30 SOLID LT & RT  
 646.682 TEMPORARY 24" STOP BAR, PAINT  
 646.482 DURABLE 24" STOP BAR, THERMOPLASTIC  
 646.483 DURABLE 24" STOP BAR, EPOXY PAINT  
 646.484 DURABLE 24" STOP BAR, POLYUREA  
 F139+30 TO F139+36 RT

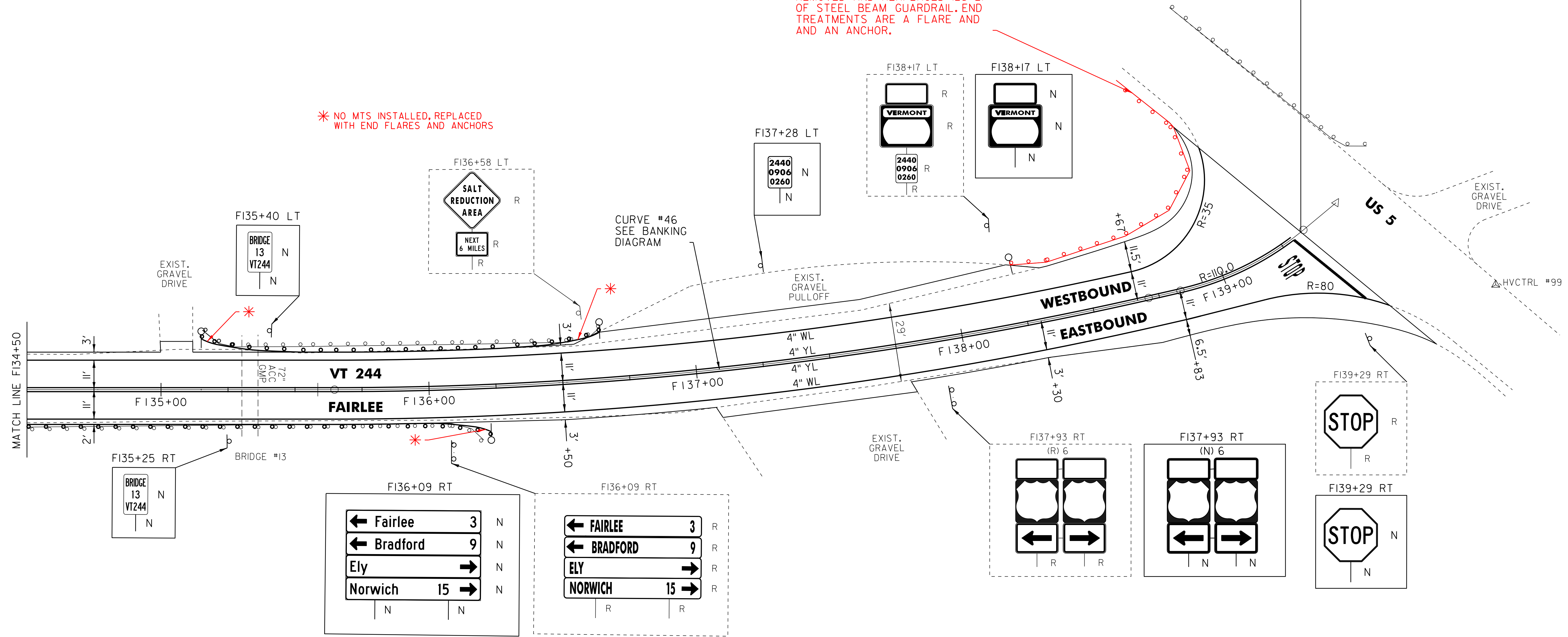
646.692 TEMPORARY LETTER OR SYMBOL, PAINT  
 646.492 DURABLE LETTER OR SYMBOL, THERMOPLASTIC  
 646.493 DURABLE LETTER OR SYMBOL, EPOXY PAINT  
 646.494 DURABLE LETTER OR SYMBOL, POLYUREA  
 F139+22 RT - "STOP"  
 621.60 ANCHOR FOR STEEL BEAM RAIL  
 F135+15 LT  
 F136+23 RT  
 F136+65 LT  
 F138+23 LT  
 F139+34 LT

203.40 SHOULDER BERM REMOVAL  
 F138+23 TO F139+34 LT  
 621.20 STEEL BEAM GUARDRAIL, GALVANIZED  
 F134+50.0 TO F135+85.0 RT F138+23 TO F139+34 LT  
 F135+52.5 TO F136+27.5 LT  
 621.50 MANUFACTURED TERMINAL SECTION, FLARED  
~~F135+15.0 LT~~  
~~F136+22.5 RT~~  
~~F136+65.0 LT~~  
 621.80 REMOVAL AND DISPOSAL OF GUARDRAIL  
 F134+50 TO F136+20 RT F138+23 TO F139+34 LT  
 F135+16 TO F136+66 LT

900.620 SPECIAL PROVISION (DELINEATOR WITH STEEL POST)  
 (AT GUARDRAIL TERMINAL)  
 F135+15.0 LT  
 F136+22.5 RT  
 F136+65.0 LT  
 F138+23.0 LT  
 675.50 REMOVING SIGNS AS SHOWN - 16

STA F138+23 TO STA F139+34 LT REMOVED AND REPLACED 125 LF OF STEEL BEAM GUARDRAIL. END TREATMENTS ARE A FLARE AND AN ANCHOR.

**VT 244**  
**F139 + 33.58**  
**(MM 2.639)**  
**END PROJECT**  
**STP 2710(1)**  
**END 3" COLD PLANE**  
**AND 8" RECLAIM**



\* NO MTS INSTALLED, REPLACED WITH END FLARES AND ANCHORS

**LEGEND**

- R = REMOVE EXISTING
- S = SALVAGE
- R&S = REMOVE AND SALVAGE
- N = NEW
- RET = RETAIN
- B-B = BACK TO BACK
- = EXISTING GUARDRAIL
- = PROPOSED GUARDRAIL
- YL = YELLOW LINE
- WL = WHITE LINE
- = DELINEATOR
- = PAVEMENT CORE

**ROADWAY LAYOUT 33**

PROJECT NAME: THETFORD-FAIRLEE  
 PROJECT NUMBER: STP 2710(1)  
 FILE NAME: /pave/07cl84/pci84  
 PROJECT LEADER: PTS  
 DESIGNED BY: NLL  
 IPARM FILE NAME: 07CI84\_52  
 PLOT DATE: 14-OCT-2013 16:35  
 DRAWN BY: SNG  
 CHECKED BY: DAM/PTS  
 SHEET 51 OF 77

NOT TO SCALE