

646.602 TEMPORARY 4" WHITE LINE, PAINT  
 646.402 DURABLE 4" WHITE LINE, THERMOPLASTIC  
 646.403 DURABLE 4" WHITE LINE, EPOXY PAINT  
 646.404 DURABLE 4" WHITE LINE, POLYUREA

F124+00 TO F134+50 SOLID LT  
 F124+00 TO F134+50 SOLID RT

646.612 TEMPORARY 4" YELLOW LINE, PAINT  
 646.412 DURABLE 4" YELLOW LINE, THERMOPLASTIC  
 646.413 DURABLE 4" YELLOW LINE, EPOXY PAINT  
 646.414 DURABLE 4" YELLOW LINE, POLYUREA

F124+00 TO F134+50 SOLID LT & RT

646.692 TEMPORARY LETTER OR SYMBOL, PAINT  
 646.492 DURABLE LETTER OR SYMBOL, THERMOPLASTIC  
 646.493 DURABLE LETTER OR SYMBOL, EPOXY PAINT  
 646.494 DURABLE LETTER OR SYMBOL, POLYUREA

F133+40 RT - "STOP"  
 F133+80 RT - "AHEAD"

620.75 SNOW BARRIER

BRIDGE 12 (SB OVERPASS) 50 FT EACH SIDE  
 BRIDGE 12 (NB OVERPASS) 50 FT EACH SIDE

621.60 ANCHOR FOR STEEL BEAM RAIL  
 F31+85 RT

621.20 STEEL BEAM GUARDRAIL, GALVANIZED

F126+15.5 TO F128+65.5 RT  
 F132+22.5 TO F134+50.0 RT

621.50 MANUFACTURED  
 TERMINAL SECTION, FLARED

F125+78 RT  
 F129+03 RT  
~~F131+85 RT~~

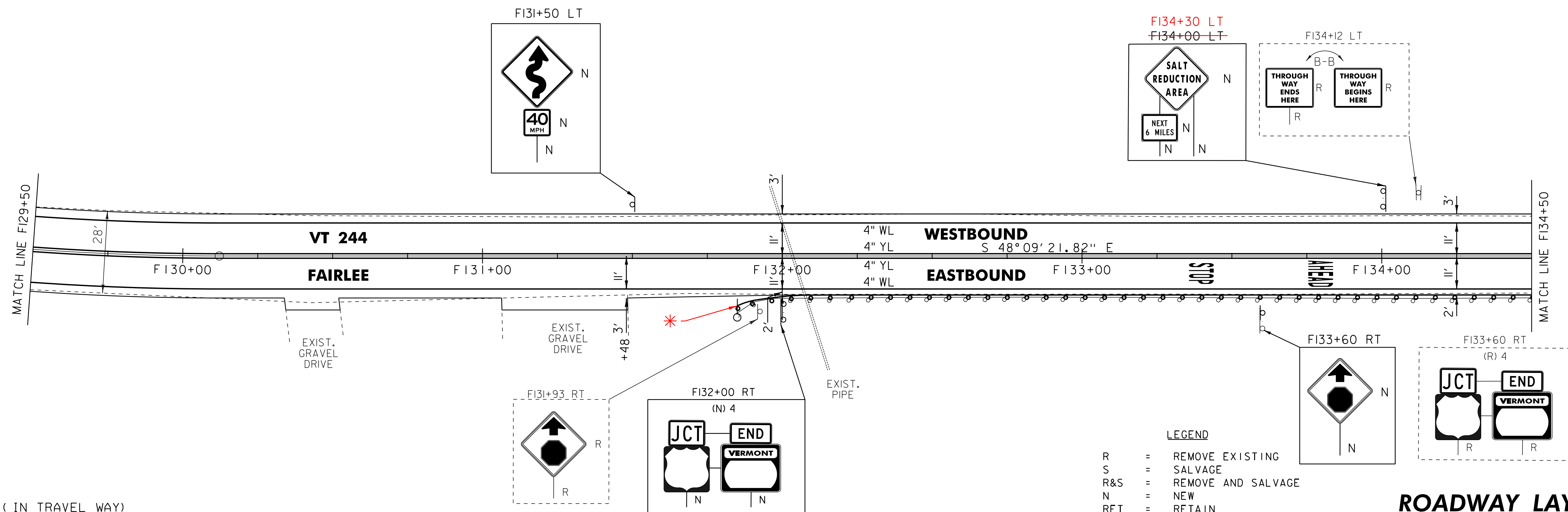
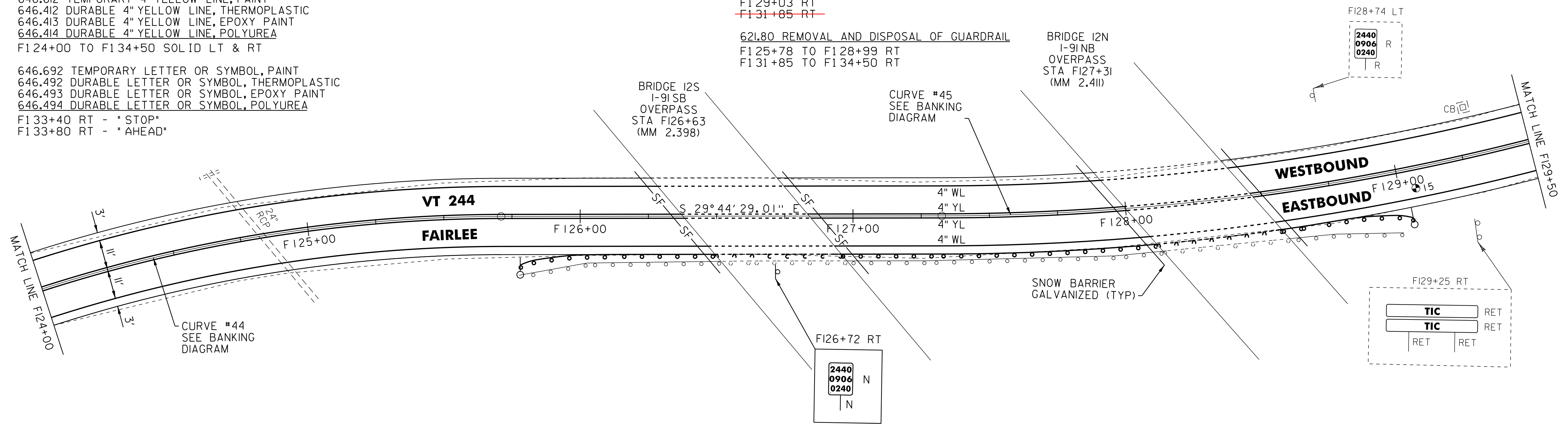
621.80 REMOVAL AND DISPOSAL OF GUARDRAIL

F125+78 TO F128+99 RT  
 F131+85 TO F134+50 RT

900.620 SPECIAL PROVISION  
 (DELINEATOR WITH STEEL POST)

( AT GUARDRAIL TERMINAL)  
 F125+78 RT  
 F129+03 RT  
 F131+85 RT

675.50 REMOVING SIGNS  
 AS SHOWN - 8



PAVEMENT CORES ( IN TRAVEL WAY)

#	STA	DEPTH	PCC
15	F129+04	6.5"	NO

\* NO MTS INSTALLED, REPLACED WITH AN END FLARE AND ANCHOR

NOT TO SCALE

- LEGEND
- R = REMOVE EXISTING
  - S = SALVAGE
  - R&S = REMOVE AND SALVAGE
  - N = NEW
  - RET = RETAIN
  - B-B = BACK TO BACK
  - = EXISTING GUARDRAIL
  - = PROPOSED GUARDRAIL
  - YL = YELLOW LINE
  - WL = WHITE LINE
  - = DELINEATOR
  - = PAVEMENT CORE
  - SF = SNOW BARRIER

ROADWAY LAYOUT 32

PROJECT NAME: THETFORD-FAIRLEE

PROJECT NUMBER: STP 2710(I)

FILE NAME: /pave/07cl84/pcl84

PROJECT LEADER: PTS

DESIGNED BY: NLL

IPARM FILE NAME: 07C184-51

PLOT DATE: 14-OCT-2013 16:35

DRAWN BY: SNG

CHECKED BY: DAM/PTS

SHEET 50 OF 77