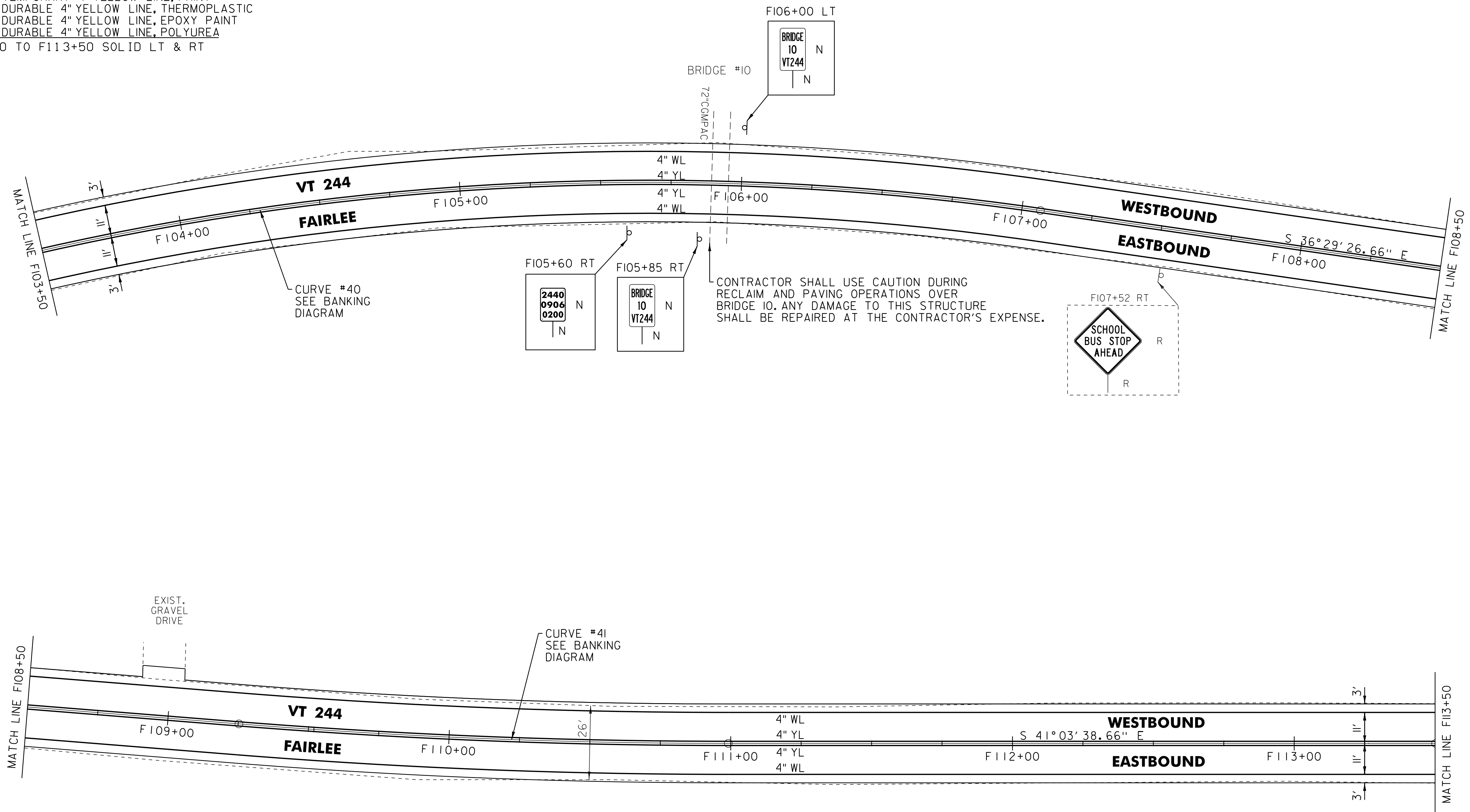


646.602 TEMPORARY 4" WHITE LINE, PAINT
 646.402 DURABLE 4" WHITE LINE, THERMOPLASTIC
 646.403 DURABLE 4" WHITE LINE, EPOXY PAINT
 646.404 DURABLE 4" WHITE LINE, POLYUREA

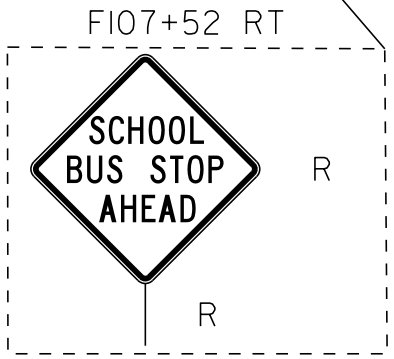
F103+50 TO F113+50 SOLID LT
 F103+50 TO F113+50 SOLID RT

646.612 TEMPORARY 4" YELLOW LINE, PAINT
 646.412 DURABLE 4" YELLOW LINE, THERMOPLASTIC
 646.413 DURABLE 4" YELLOW LINE, EPOXY PAINT
 646.414 DURABLE 4" YELLOW LINE, POLYUREA
 F103+50 TO F113+50 SOLID LT & RT

675.50 REMOVING SIGNS
 AS SHOWN - 1



CONTRACTOR SHALL USE CAUTION DURING RECLAIM AND PAVING OPERATIONS OVER BRIDGE 10. ANY DAMAGE TO THIS STRUCTURE SHALL BE REPAIRED AT THE CONTRACTOR'S EXPENSE.



LEGEND

- R = REMOVE EXISTING
- S = SALVAGE
- R&S = REMOVE AND SALVAGE
- N = NEW
- RET = RETAIN
- B-B = BACK TO BACK
- = EXISTING GUARDRAIL
- = PROPOSED GUARDRAIL
- YL = YELLOW LINE
- WL = WHITE LINE
- = DELINEATOR
- ⊙ = PAVEMENT CORE

ROADWAY LAYOUT 30

PROJECT NAME: THETFORD-FAIRLEE	
PROJECT NUMBER: STP 2710(I)	
FILE NAME: /pave/07cl84/pcl84	PLOT DATE: 14-OCT-2013 16:35
PROJECT LEADER: PTS	DRAWN BY: SNG
DESIGNED BY: NLL	CHECKED BY: DAM/PTS
IPARM FILE NAME: 07C184_49	SHEET 48 OF 77

NOT TO SCALE