

646.602 TEMPORARY 4" WHITE LINE, PAINT
 646.402 DURABLE 4" WHITE LINE, THERMOPLASTIC
 646.403 DURABLE 4" WHITE LINE, EPOXY PAINT
 646.404 DURABLE 4" WHITE LINE, POLYUREA
 F82+00 TO F92+50 SOLID LT
 F82+00 TO F92+50 SOLID RT
 646.612 TEMPORARY 4" YELLOW LINE, PAINT
 646.412 DURABLE 4" YELLOW LINE, THERMOPLASTIC
 646.413 DURABLE 4" YELLOW LINE, EPOXY PAINT
 646.414 DURABLE 4" YELLOW LINE, POLYUREA
 F82+00 TO F92+50 SOLID LT & RT

621.20 STEEL BEAM GUARDRAIL, GALVANIZED
 F85+85 TO F86+72.5 LT
 F86+25 TO F86+50 RT
 F86+87.5 TO F87+75 RT
 F87+10 TO F87+47.5 LT
 621.206 STEEL BEAM GUARDRAIL, GALVANIZED/NESTED
 F86+50 TO F86+87.5 RT
 F86+72.5 TO F87+10 LT
 621.50 MANUFACTURED TERMINAL SECTION, FLARED
 F85+87.5 RT
 F87+85 LT

621.60 ANCHOR FOR STEEL BEAM RAIL
 F85+85 LT
 F87+75 RT
 621.80 REMOVAL AND DISPOSAL OF GUARDRAIL
 F85+83 TO F87+78 RT
 F85+84 TO F87+73 LT

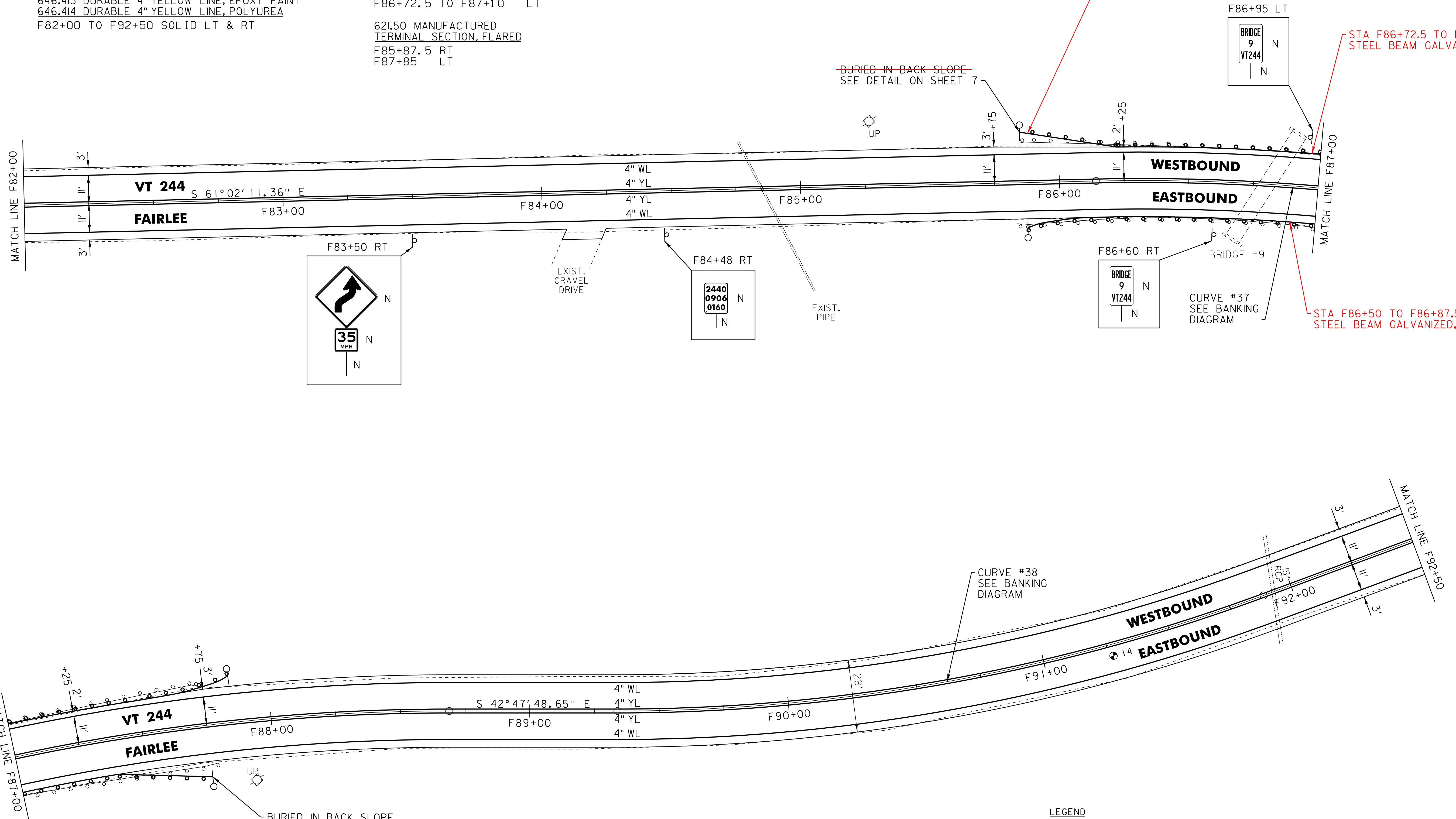
900.620 SPECIAL PROVISION (DELINEATOR WITH STEEL POST)
 (AT GUARDRAIL TERMINAL)
 F85+87.5 RT
 F85+85 LT
 F87+75 RT
 F87+85 LT

~~601.0005 12" CSP .064 (2-2/3 X 1/2)~~
~~(SEE DETAIL ON SHEET 7)~~
~~F85+70 TO F86+00 LT~~

INSTALLED FLARED END SECTION WITH ANCHOR AT STA F85+85 LT RATHER THAN BURY THE GUARDRAIL END. DID NOT INSTALL PROPOSED 12" CSP

STA F86+72.5 TO F87+10 LT STEEL BEAM GALVANIZED, NESTED

STA F86+50 TO F86+87.5 RT STEEL BEAM GALVANIZED, NESTED



BURIED IN BACK SLOPE SEE DETAIL ON SHEET 7 BUILT AS PER PLAN

PAVEMENT CORES (IN TRAVEL WAY)

#	STA	DEPTH	PCC
14	F91+24	5.25"	NO

LEGEND

- R = REMOVE EXISTING
- S = SALVAGE
- R&S = REMOVE AND SALVAGE
- N = NEW
- RET = RETAIN
- B-B = BACK TO BACK
- = EXISTING GUARDRAIL
- = PROPOSED GUARDRAIL
- YL = YELLOW LINE
- WL = WHITE LINE
- = DELINEATOR
- ⊙ = PAVEMENT CORE

ROADWAY LAYOUT 28

PROJECT NAME: THETFORD-FAIRLEE

PROJECT NUMBER: STP 2710(I)

FILE NAME: /pave/07cl84/pcl84
 PROJECT LEADER: PTS
 DESIGNED BY: NLL
 IPARM FILE NAME: 07C184_47

PLOT DATE: 14-OCT-2013 16:35
 DRAWN BY: SNG
 CHECKED BY: DAM/PTS
 SHEET 46 OF 77

NOT TO SCALE