

646.602 TEMPORARY 4" WHITE LINE, PAINT
 646.402 DURABLE 4" WHITE LINE, THERMOPLASTIC
 646.403 DURABLE 4" WHITE LINE, EPOXY PAINT
 646.404 DURABLE 4" WHITE LINE, POLYUREA
 F43+50 TO F54+50 SOLID LT
 F43+50 TO F54+50 SOLID RT

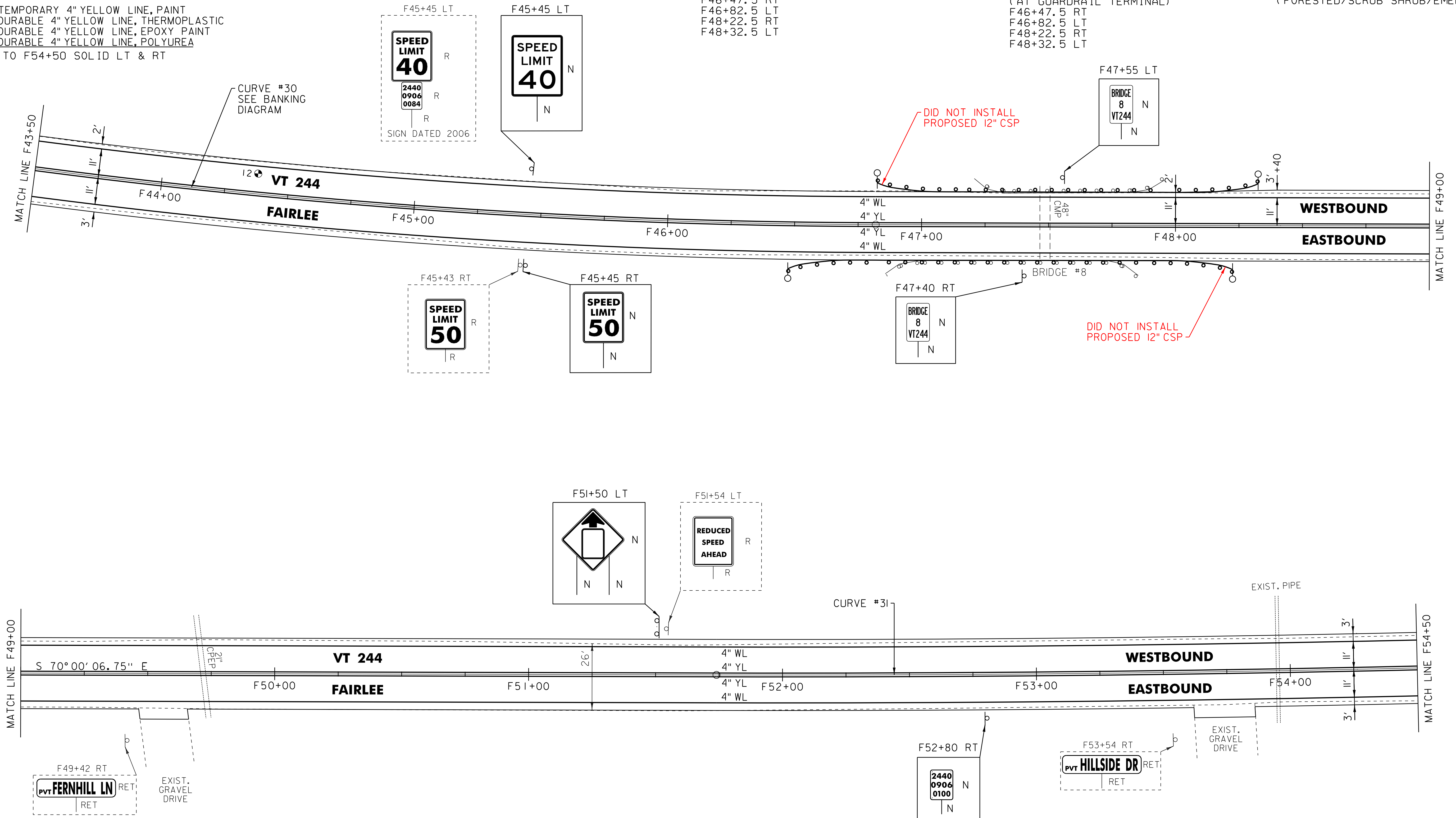
646.612 TEMPORARY 4" YELLOW LINE, PAINT
 646.412 DURABLE 4" YELLOW LINE, THERMOPLASTIC
 646.413 DURABLE 4" YELLOW LINE, EPOXY PAINT
 646.414 DURABLE 4" YELLOW LINE, POLYUREA
 F43+50 TO F54+50 SOLID LT & RT

~~601.0005 12" CSP .064 (2-2/3 X 1/2)~~
~~(SEE PIPE AT MTS DETAIL ON SHEET 7)~~
~~F46+65 TO F46+95 LT~~
~~F48+05 TO F48+35 RT~~

621.20 STEEL BEAM GUARDRAIL, GALVANIZED
 F46+85 TO F47+85 RT
 F47+20 TO F47+95 LT
 621.50 MANUFACTURED
 TERMINAL SECTION, FLARED
 F46+47.5 RT
 F46+82.5 LT
 F48+22.5 RT
 F48+32.5 LT

621.80 REMOVAL AND DISPOSAL OF GUARDRAIL
 F46+86 TO F47+85 RT
 F47+20 TO F47+95 LT
 900.620 SPECIAL PROVISION
 (DELINEATOR WITH STEEL POST)
 (AT GUARDRAIL TERMINAL)
 F46+47.5 RT
 F46+82.5 LT
 F48+22.5 RT
 F48+32.5 LT

675.50 REMOVING SIGNS
 AS SHOWN - 4
 ENVIRONMENTALLY SENSITIVE LOCATION
 F43+50 TO F45+00 RT (SCRUB SHRUB)
 F52+00 TO F54+50 LT
 (FORESTED/SCRUB SHRUB/EMERGENT)



PAVEMENT CORES (IN TRAVEL WAY)

#	STA	DEPTH	PCC
12	F44+35	9.75"	N0

LEGEND

- R = REMOVE EXISTING
- S = SALVAGE
- R&S = REMOVE AND SALVAGE
- N = NEW
- RET = RETAIN
- B-B = BACK TO BACK
- = EXISTING GUARDRAIL
- = PROPOSED GUARDRAIL
- YL = YELLOW LINE
- WL = WHITE LINE
- = DELINEATOR
- ⊕ = PAVEMENT CORE

ROADWAY LAYOUT 24

PROJECT NAME: THETFORD-FAIRLEE

PROJECT NUMBER: STP 2710(I)

FILE NAME: /pave/07cl84/pci84

PROJECT LEADER: PTS

DESIGNED BY: NLL

IPARM FILE NAME: 07C184_43

PLOT DATE: 14-OCT-2013 16:35

DRAWN BY: SNG

CHECKED BY: DAM/PTS

SHEET 42 OF 77

NOT TO SCALE