

646.602 TEMPORARY 4" WHITE LINE, PAINT  
 646.402 DURABLE 4" WHITE LINE, THERMOPLASTIC  
 646.403 DURABLE 4" WHITE LINE, EPOXY PAINT  
 646.404 DURABLE 4" WHITE LINE, POLYUREA

A11+00 TO A21+00 SOLID LT  
 A11+00 TO A21+00 SOLID RT

646.612 TEMPORARY 4" YELLOW LINE, PAINT  
 646.412 DURABLE 4" YELLOW LINE, THERMOPLASTIC  
 646.413 DURABLE 4" YELLOW LINE, EPOXY PAINT  
 646.414 DURABLE 4" YELLOW LINE, POLYUREA

A11+00 TO A21+00 SOLID LT & RT

621.20 STEEL BEAM GUARDRAIL, GALVANIZED

A20+75 TO A21+00 RT

621.60 ANCHOR FOR STEEL BEAM RAIL

A20+75 RT

900.620 SPECIAL PROVISION  
 (DELINEATOR WITH STEEL POST)

(AT GUARDRAIL TERMINAL)

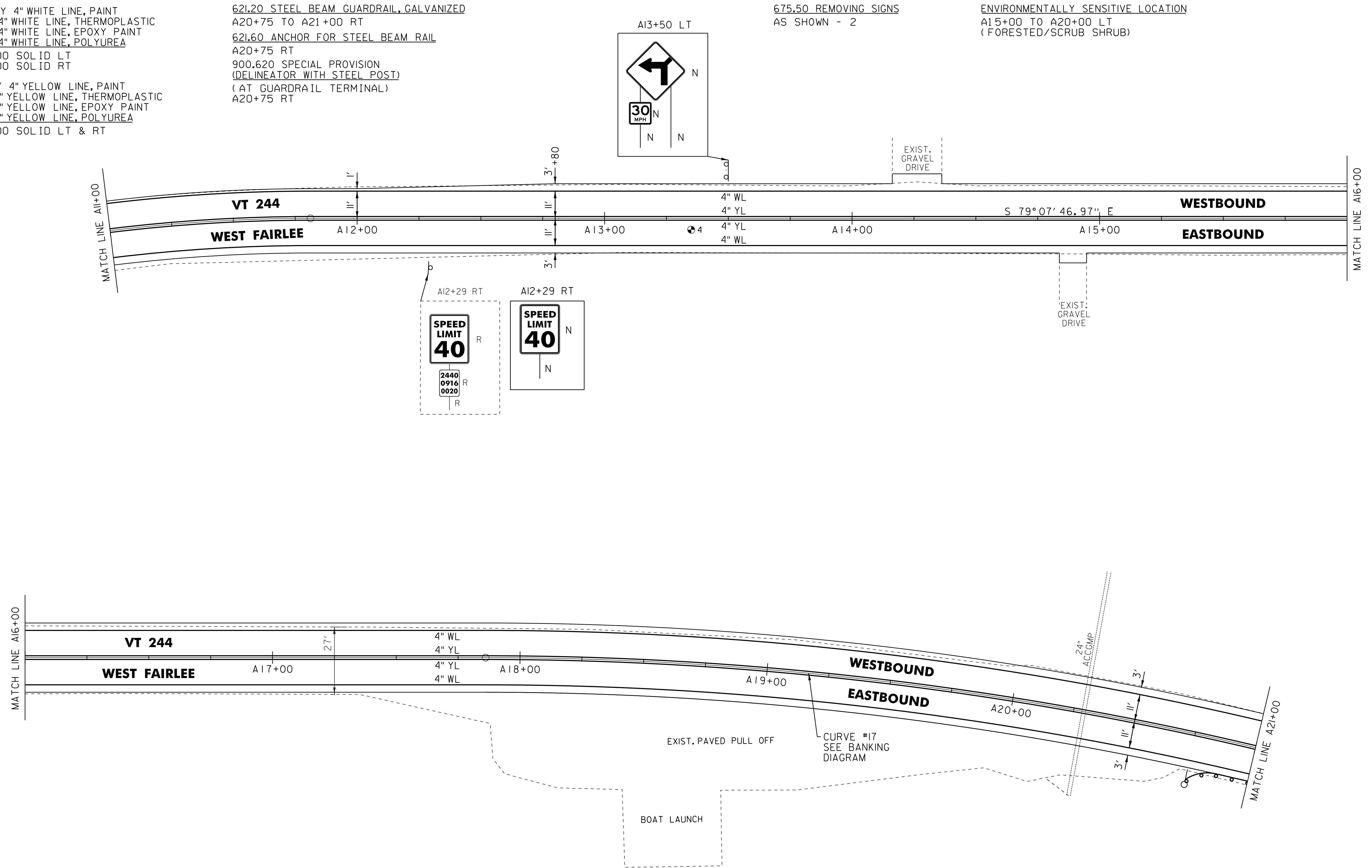
A20+75 RT

675.50 REMOVING SIGNS

AS SHOWN - 2

ENVIRONMENTALLY SENSITIVE LOCATION

A15+00 TO A20+00 LT  
 (FORESTED/SCRUB SHRUB)



PAVEMENT CORES ( IN TRAVEL WAY)

#	STA	DEPTH	PCC
4	A13+36	3.625'	NO

LAKE FAIRLEE

LEGEND

- R = REMOVE EXISTING
- S = SALVAGE
- R&S = REMOVE AND SALVAGE
- N = NEW
- RET = RETAIN
- B-B = BACK TO BACK
- = EXISTING GUARDRAIL
- = PROPOSED GUARDRAIL
- YL = YELLOW LINE
- WL = WHITE LINE
- = DELINEATOR
- ⊕ = PAVEMENT CORE

ROADWAY LAYOUT 11

PROJECT NAME: THETFORD-FAIRLEE

PROJECT NUMBER: STP 2710(I)

FILE NAME: /pave/07cl84/pci84  
 PROJECT LEADER: PTS  
 DESIGNED BY: NLL  
 IPARM FILE NAME: 07CI84\_30

PLOT DATE: 14-OCT-2013 16:35  
 DRAWN BY: SNG  
 CHECKED BY: DAM/PTS  
 SHEET 29 OF 77

NOT TO SCALE