

646.602 TEMPORARY 4" WHITE LINE, PAINT
 646.402 DURABLE 4" WHITE LINE, THERMOPLASTIC
 646.403 DURABLE 4" WHITE LINE, EPOXY PAINT
 646.404 DURABLE 4" WHITE LINE, POLYUREA
 A5+50 TO A7+20 SOLID LT
 A5+50 TO A11+00 SOLID RT
 A7+20 TO A7+48 SOLID LT (TH 2)
 A7+69 TO A8+02 SOLID LT (TH 2)
 A8+02 TO A11+00 SOLID LT

646.612 TEMPORARY 4" YELLOW LINE, PAINT
 646.412 DURABLE 4" YELLOW LINE, THERMOPLASTIC
 646.413 DURABLE 4" YELLOW LINE, EPOXY PAINT
 646.414 DURABLE 4" YELLOW LINE, POLYUREA
 A5+50 TO A7+39 SOLID LT & RT
 A7+59 DOUBLE SOLID LT (TH 2)
 A7+79 TO A11+00 SOLID LT & RT

646.682 TEMPORARY 24" STOP BAR, PAINT
 646.482 DURABLE 24" STOP BAR, THERMOPLASTIC
 646.483 DURABLE 24" STOP BAR, EPOXY PAINT
 646.484 DURABLE 24" STOP BAR, POLYUREA
 A7+38 TO A7+58 LT (TH 2)

646.692 TEMPORARY LETTER OR SYMBOL, PAINT
 646.492 DURABLE LETTER OR SYMBOL, THERMOPLASTIC
 646.493 DURABLE LETTER OR SYMBOL, EPOXY PAINT
 646.494 DURABLE LETTER OR SYMBOL, POLYUREA
 A7+52 LT - "STOP"

621.20 STEEL BEAM GUARDRAIL, GALVANIZED
 A7+73.5 TO A8+11 RT
 A7+86 TO A8+11 LT
 A9+22 TO A9+72 RT
 A9+22 TO A10+09.5 LT

621.21 H.D. STEEL BEAM GUARDRAIL, GALVANIZED
 A8+11 TO A8+36 RT
 A8+11 TO A8+36 LT
 A8+97 TO A9+22 RT
 A8+97 TO A9+22 LT

621.53 TERMINAL CONNECTOR FOR STEEL BEAM GUARDRAIL
~~A8+36 RT - NO TERMINAL CONNECTORS WERE USED ON BRIDGE #2. HD BEAM~~
~~A8+36 LT - END TREATMENTS TIED INTO~~
~~A8+97 RT - GUARDRAIL THAT RAN ACROSS THE BRIDGE.~~
~~A8+97 LT -~~

621.60 ANCHOR FOR STEEL BEAM RAIL
 A7+73.5 RT
 A7+86 LT
 A9+72 RT
 A10+09.5 LT

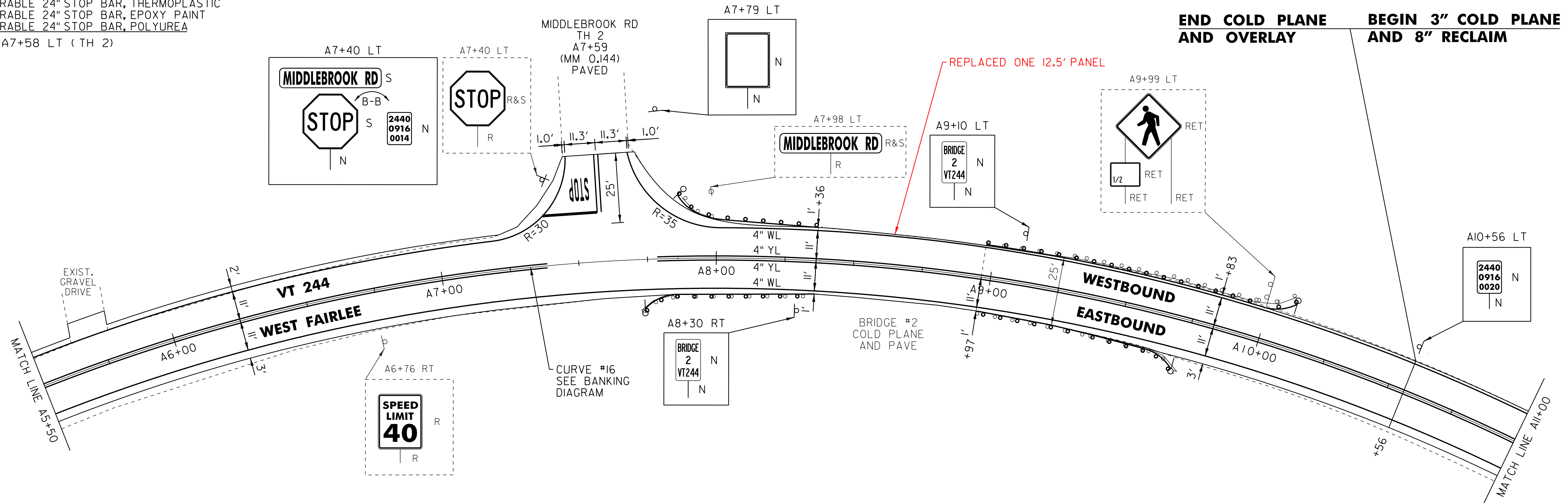
621.80 REMOVAL AND DISPOSAL OF GUARDRAIL
 A7+72 TO A9+74 RT
 A7+88 TO A10+09.5 LT

900.620 SPECIAL PROVISION (DELINEATOR WITH STEEL POST) (AT GUARDRAIL TERMINAL)
 A7+73.5 RT
 A7+86 LT
 A9+72 RT
 A10+09.5 LT

675.50 REMOVING SIGNS
 AS SHOWN - 3

675.60 ERECTING SALVAGED SIGNS
 AS SHOWN - 2

ENVIRONMENTALLY SENSITIVE LOCATION
 A6+00 TO A11+00 RT (SCRUB SHRUB)
 A8+00 TO A10+00 LT (SCRUB SHRUB)



END COLD PLANE AND OVERLAY
BEGIN 3" COLD PLANE AND 8" RECLAIM

LEGEND

- R = REMOVE EXISTING
- S = SALVAGE
- R&S = REMOVE AND SALVAGE
- N = NEW
- RET = RETAIN
- B-B = BACK TO BACK
- = EXISTING GUARDRAIL
- = PROPOSED GUARDRAIL
- YL = YELLOW LINE
- WL = WHITE LINE
- = DELINEATOR
- = PAVEMENT CORE

ROADWAY LAYOUT 10

PROJECT NAME: THETFORD-FAIRLEE

PROJECT NUMBER: STP 2710(I)

FILE NAME: /pave/07cl84/pcl84

PROJECT LEADER: PTS

DESIGNED BY: NLL

IPARM FILE NAME: 07CI84_29

PLOT DATE: 14-OCT-2013 16:35

DRAWN BY: SNG

CHECKED BY: DAM/PTS

SHEET 28 OF 77

NOT TO SCALE