

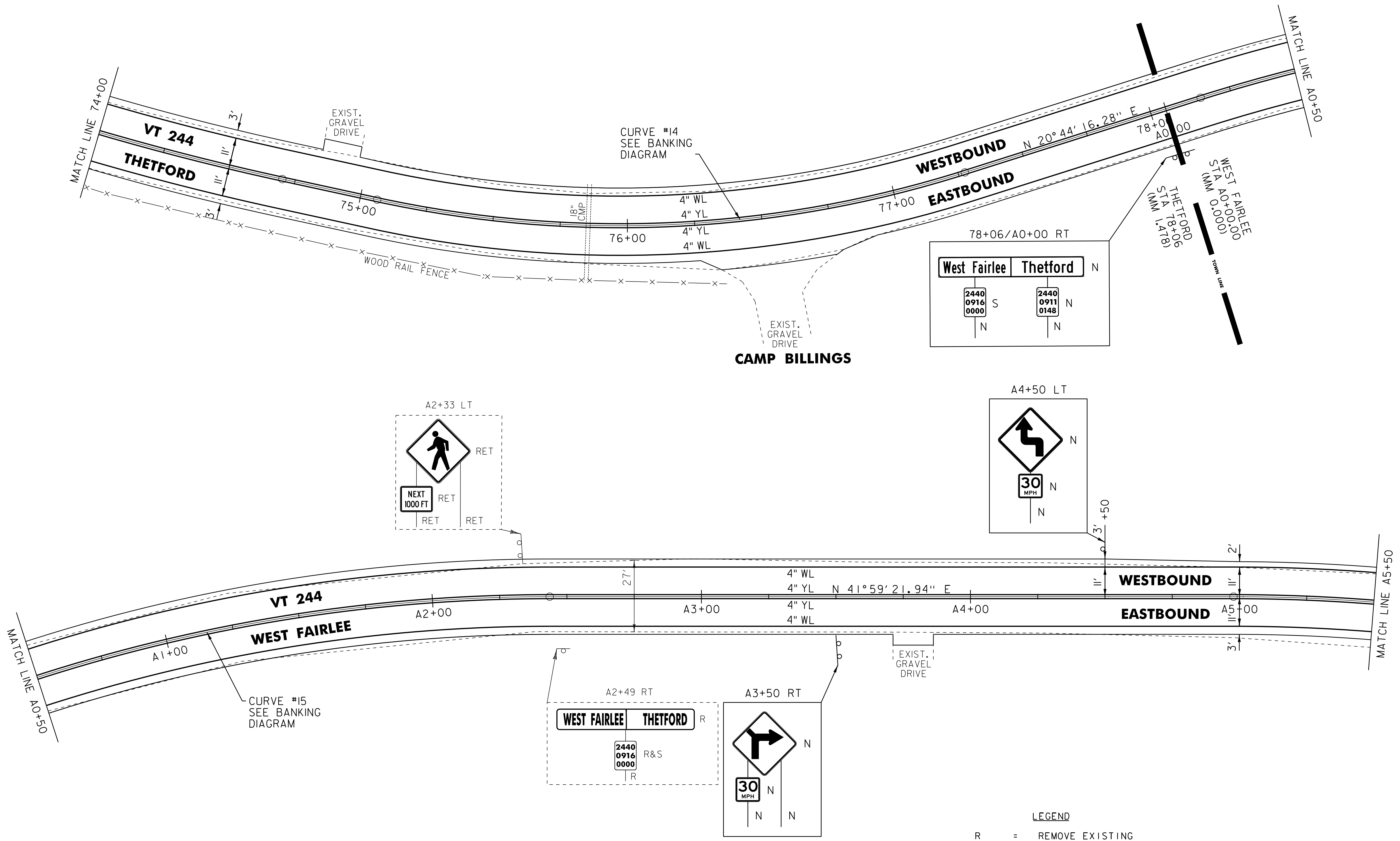
646.602 TEMPORARY 4" WHITE LINE, PAINT
 646.402 DURABLE 4" WHITE LINE, THERMOPLASTIC
 646.403 DURABLE 4" WHITE LINE, EPOXY PAINT
 646.404 DURABLE 4" WHITE LINE, POLYUREA
 74+00 TO A5+50 SOLID LT
 74+00 TO A5+50 SOLID RT

646.612 TEMPORARY 4" YELLOW LINE, PAINT
 646.412 DURABLE 4" YELLOW LINE, THERMOPLASTIC
 646.413 DURABLE 4" YELLOW LINE, EPOXY PAINT
 646.414 DURABLE 4" YELLOW LINE, POLYUREA
 74+00 TO A5+50 SOLID LT & RT

675.50 REMOVING SIGNS
 AS SHOWN - 2

675.60 ERECTING SALVAGED SIGNS
 AS SHOWN - 1

ENVIRONMENTALLY SENSITIVE LOCATION
 75+70 TO 77+70 LT
 (SCRUB SHRUB/VERNAL POOL)



MODEL: \$MODELNAME\$
 FILE: \$FILEABBREV\$

NOT TO SCALE

LEGEND

- R = REMOVE EXISTING
- S = SALVAGE
- R&S = REMOVE AND SALVAGE
- N = NEW
- RET = RETAIN
- B-B = BACK TO BACK
- = EXISTING GUARDRAIL
- = PROPOSED GUARDRAIL
- YL = YELLOW LINE
- WL = WHITE LINE
- = DELINEATOR
- = PAVEMENT CORE

ROADWAY LAYOUT 9

PROJECT NAME: THETFORD-FAIRLEE	
PROJECT NUMBER: STP 2710(I)	
FILE NAME: /pave/07cl84/pcl84	PLOT DATE: 14-OCT-2013 16:35
PROJECT LEADER: PTS	DRAWN BY: SNG
DESIGNED BY: NLL	CHECKED BY: DAM/PTS
IPARM FILE NAME: 07C184_28	SHEET 27 OF 77