

646.602 TEMPORARY 4" WHITE LINE, PAINT
 646.402 DURABLE 4" WHITE LINE, THERMOPLASTIC
 646.403 DURABLE 4" WHITE LINE, EPOXY PAINT
 646.404 DURABLE 4" WHITE LINE, POLYUREA
 64+00 TO 74+00 SOLID LT
 64+00 TO 74+00 SOLID RT

604.412, 604.415 REHAB. DROP
 INLETS, CATCH BASINS, OR MANHOLES,
 CLASS I, CLASS II OR CLASS III
 67+41 LT

201.31 THINNING AND TRIMMING FOR SIGNS
 71+20 RT

621.30 BOX BEAM GUARDRAIL
 64+00 TO 65+41.4 RT

900.620 SPECIAL PROVISION
 (DELINEATOR WITH STEEL POST)
 (AT GUARDRAIL TERMINAL)
 65+41.4 RT

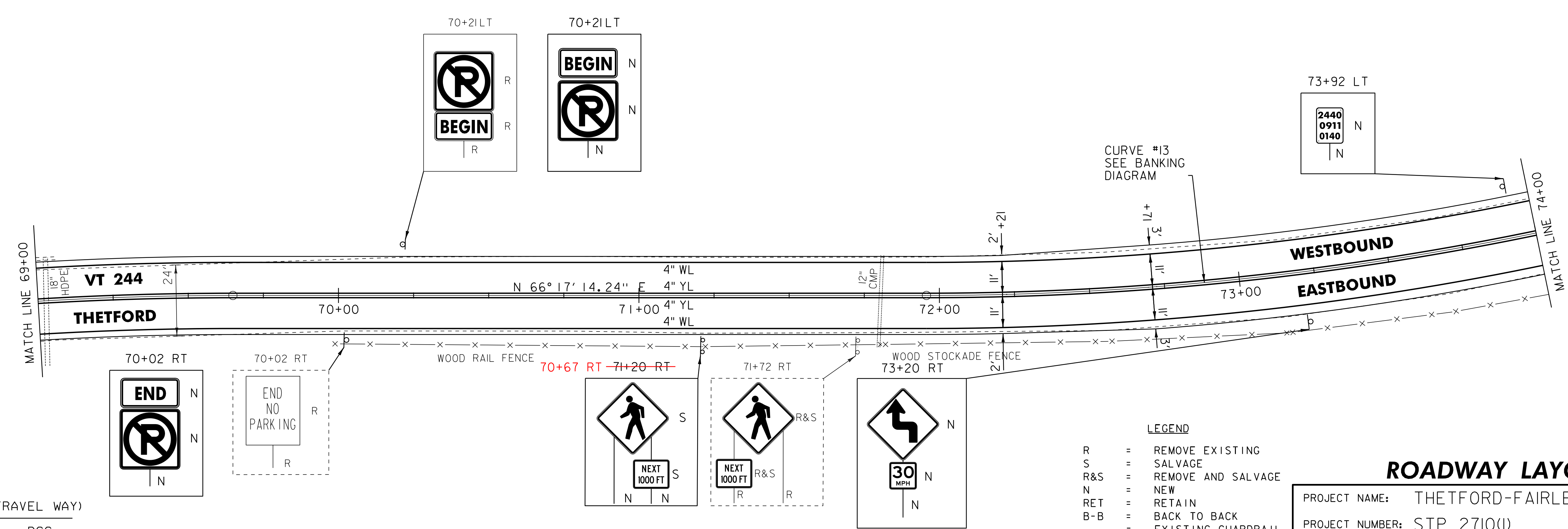
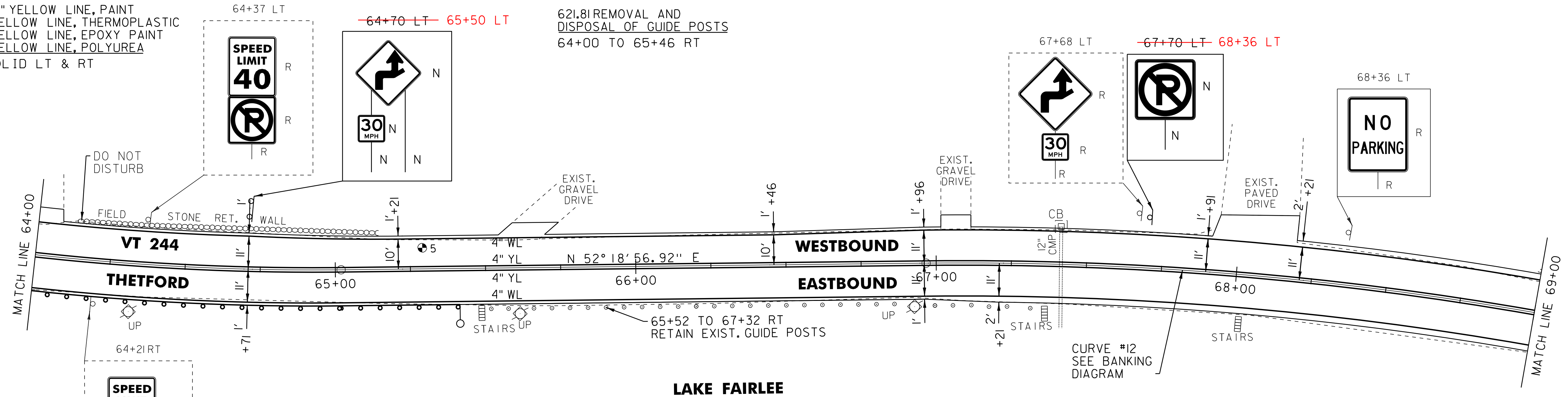
675.50 REMOVING SIGNS
 AS SHOWN - 12

675.60 ERECTING SALVAGED SIGNS
 AS SHOWN - 2

ENVIRONMENTALLY SENSITIVE LOCATION
 64+00 TO 70+71 RT (LAKE FAIRLEE)

646.612 TEMPORARY 4" YELLOW LINE, PAINT
 646.412 DURABLE 4" YELLOW LINE, THERMOPLASTIC
 646.413 DURABLE 4" YELLOW LINE, EPOXY PAINT
 646.414 DURABLE 4" YELLOW LINE, POLYUREA
 64+00 TO 74+00 SOLID LT & RT

621.81 REMOVAL AND
 DISPOSAL OF GUIDE POSTS
 64+00 TO 65+46 RT



PAVEMENT CORES (IN TRAVEL WAY)

#	STA	DEPTH	PCC
5	65+29	7.5"	NO

NOT TO SCALE

- LEGEND
- R = REMOVE EXISTING
 - S = SALVAGE
 - R&S = REMOVE AND SALVAGE
 - N = NEW
 - RET = RETAIN
 - B-B = BACK TO BACK
 - = EXISTING GUARDRAIL
 - = PROPOSED GUARDRAIL
 - YL = YELLOW LINE
 - WL = WHITE LINE
 - = DELINEATOR
 - ⊙ = PAVEMENT CORE

ROADWAY LAYOUT 8

PROJECT NAME: THETFORD-FAIRLEE
 PROJECT NUMBER: STP 2710(I)

FILE NAME: /pave/07cl84/pci84
 PROJECT LEADER: PTS
 DESIGNED BY: NLL
 IPARM FILE NAME: 07C184_27

PLOT DATE: 14-OCT-2013 16:35
 DRAWN BY: SNG
 CHECKED BY: DAM/PTS
 SHEET 26 OF 77