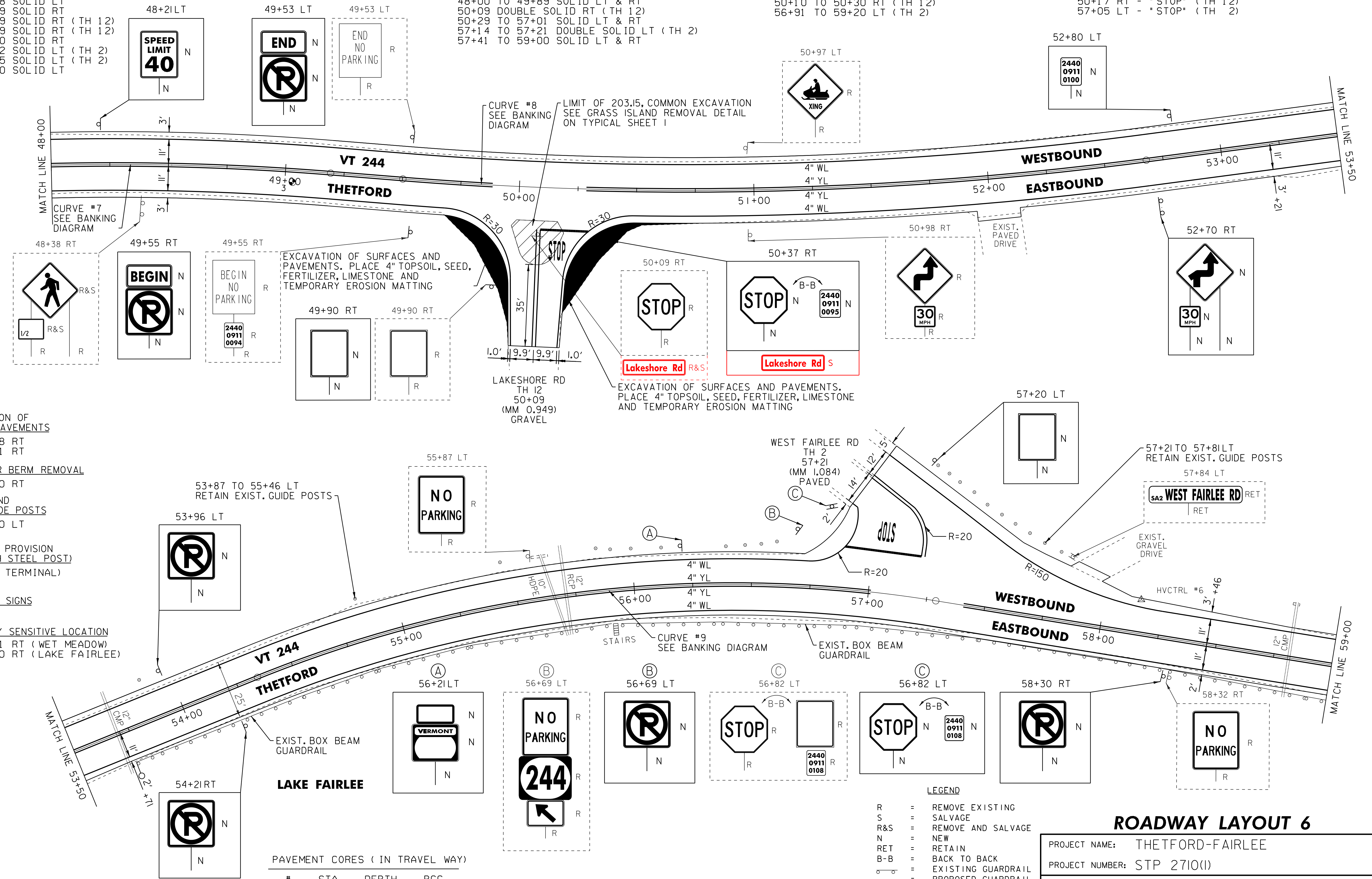


646.602 TEMPORARY 4" WHITE LINE, PAINT
 646.402 DURABLE 4" WHITE LINE, THERMOPLASTIC
 646.403 DURABLE 4" WHITE LINE, EPOXY PAINT
 646.404 DURABLE 4" WHITE LINE, POLYUREA
 48+00 TO 56+78 SOLID LT
 48+00 TO 49+69 SOLID RT
 49+69 TO 49+99 SOLID RT (TH 12)
 50+18 TO 50+49 SOLID RT (TH 12)
 50+49 TO 59+00 SOLID RT
 56+78 TO 56+92 SOLID LT (TH 2)
 57+33 TO 58+25 SOLID LT (TH 2)
 58+25 TO 59+00 SOLID LT

646.612 TEMPORARY 4" YELLOW LINE, PAINT
 646.412 DURABLE 4" YELLOW LINE, THERMOPLASTIC
 646.413 DURABLE 4" YELLOW LINE, EPOXY PAINT
 646.414 DURABLE 4" YELLOW LINE, POLYUREA
 48+00 TO 49+89 SOLID LT & RT
 50+09 DOUBLE SOLID RT (TH 12)
 50+29 TO 57+01 SOLID LT & RT
 57+14 TO 57+21 DOUBLE SOLID LT (TH 2)
 57+41 TO 59+00 SOLID LT & RT

646.682 TEMPORARY 24" STOP BAR, PAINT
 646.482 DURABLE 24" STOP BAR, THERMOPLASTIC
 646.483 DURABLE 24" STOP BAR, EPOXY PAINT
 646.484 DURABLE 24" STOP BAR, POLYUREA
 50+10 TO 50+30 RT (TH 12)
 56+91 TO 59+20 LT (TH 2)

646.692 TEMPORARY LETTER OR SYMBOL, PAINT
 646.492 DURABLE LETTER OR SYMBOL, THERMOPLASTIC
 646.493 DURABLE LETTER OR SYMBOL, EPOXY PAINT
 646.494 DURABLE LETTER OR SYMBOL, POLYUREA
 50+17 RT - "STOP" (TH 12)
 57+05 LT - "STOP" (TH 2)



203.28 EXCAVATION OF SURFACES AND PAVEMENTS
 49+69 TO 49+98 RT
 50+19 TO 50+81 RT

203.40 SHOULDER BERM REMOVAL
 53+73 TO 59+00 RT

621.81 REMOVAL AND DISPOSAL OF GUIDE POSTS
 55+85 TO 56+60 LT

900.620 SPECIAL PROVISION (DELINEATOR WITH STEEL POST)
 (AT GUARDRAIL TERMINAL)
 53+73 RT

675.50 REMOVING SIGNS AS SHOWN - 18

ENVIRONMENTALLY SENSITIVE LOCATION
 48+00 TO 48+21 RT (WET MEADOW)
 53+71 TO 59+00 RT (LAKE FAIRLEE)

PAVEMENT CORES (IN TRAVEL WAY)

#	STA	DEPTH	PCC
3	49+03	6.25'	NO

- LEGEND
- R = REMOVE EXISTING
 - S = SALVAGE
 - R&S = REMOVE AND SALVAGE
 - N = NEW
 - RET = RETAIN
 - B-B = BACK TO BACK
 - = EXISTING GUARDRAIL
 - = PROPOSED GUARDRAIL
 - YL = YELLOW LINE
 - WL = WHITE LINE
 - = DELINEATOR
 - = PAVEMENT CORE

ROADWAY LAYOUT 6

PROJECT NAME: THETFORD-FAIRLEE

PROJECT NUMBER: STP 2710(I)

FILE NAME: /pave/07cl84/pci84

PROJECT LEADER: PTS

DESIGNED BY: NLL

IPARM FILE NAME: 07C184_25

PLOT DATE: 14-OCT-2013 16:35

DRAWN BY: SNG

CHECKED BY: DAM/PTS

SHEET 24 OF 77

NOT TO SCALE