

646.602 TEMPORARY 4" WHITE LINE, PAINT  
 646.402 DURABLE 4" WHITE LINE, THERMOPLASTIC  
 646.403 DURABLE 4" WHITE LINE, EPOXY PAINT  
 646.404 DURABLE 4" WHITE LINE, POLYUREA  
 38+00 TO 48+00 SOLID LT  
 38+00 TO 48+00 SOLID RT

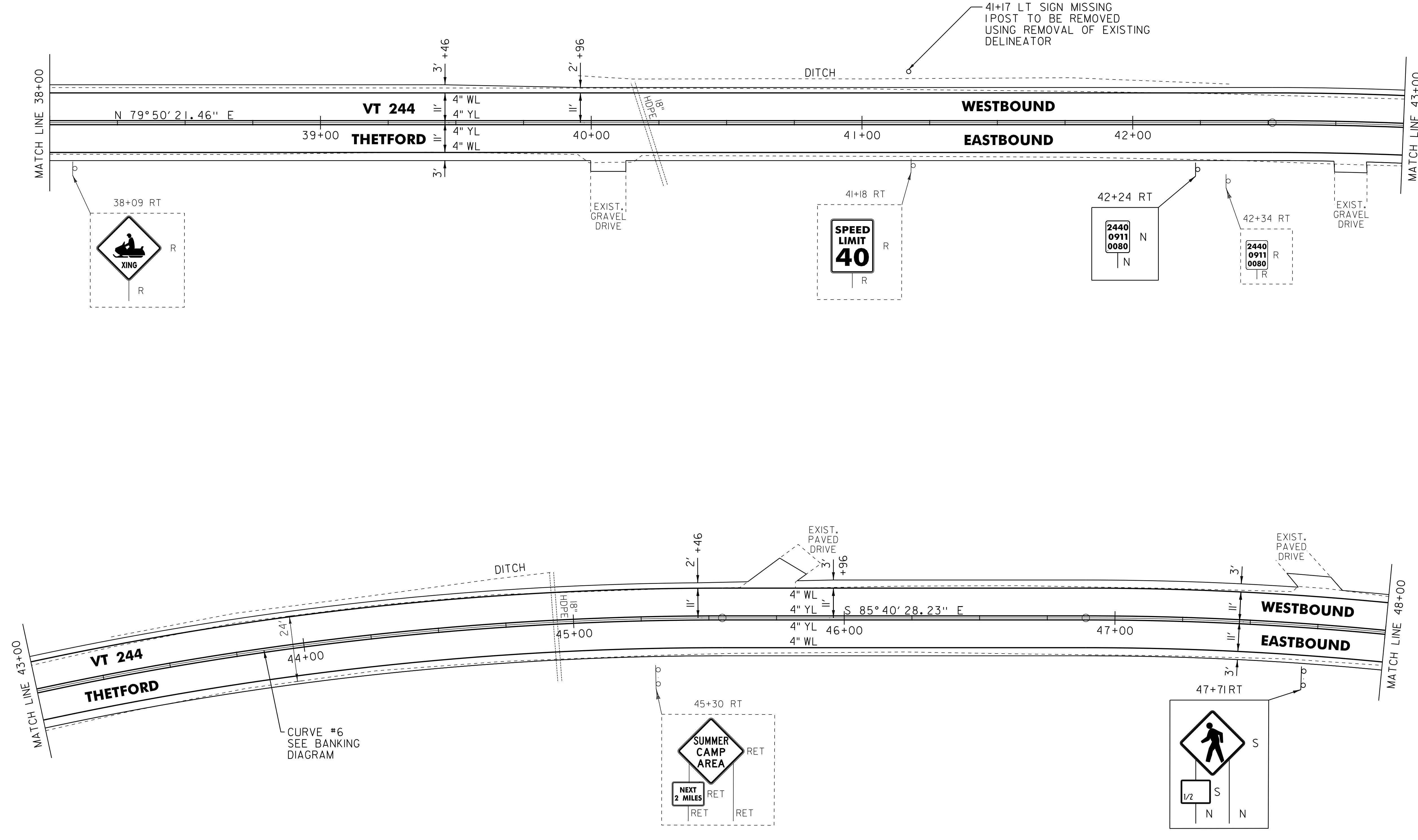
646.612 TEMPORARY 4" YELLOW LINE, PAINT  
 646.412 DURABLE 4" YELLOW LINE, THERMOPLASTIC  
 646.413 DURABLE 4" YELLOW LINE, EPOXY PAINT  
 646.414 DURABLE 4" YELLOW LINE, POLYUREA  
 38+00 TO 48+00 SOLID LT & RT

676.12 REMOVAL OF EXISTING DELINEATOR  
 41+17 LT

675.50 REMOVING SIGNS  
 AS SHOWN - 3

675.60 ERECTING SALVAGED SIGNS  
 AS SHOWN - 2

ENVIRONMENTALLY SENSITIVE LOCATION  
 44+71 TO 48+00 RT (WET MEADOW)



41+17 LT SIGN MISSING  
 IPOST TO BE REMOVED  
 USING REMOVAL OF EXISTING  
 DELINEATOR

**LEGEND**

- R = REMOVE EXISTING
- S = SALVAGE
- R&S = REMOVE AND SALVAGE
- N = NEW
- RET = RETAIN
- B-B = BACK TO BACK
- = EXISTING GUARDRAIL
- = PROPOSED GUARDRAIL
- YL = YELLOW LINE
- WL = WHITE LINE
- = DELINEATOR
- = PAVEMENT CORE

**ROADWAY LAYOUT 5**

PROJECT NAME: THETFORD-FAIRLEE	
PROJECT NUMBER: STP 2710(I)	
FILE NAME: /pave/07c184/pci84	PLOT DATE: 14-OCT-2013 16:35
PROJECT LEADER: PTS	DRAWN BY: SNG
DESIGNED BY: NLL	CHECKED BY: DAM/PTS
IPARM FILE NAME: 07C184_24	SHEET 23 OF 77

NOT TO SCALE