

**VT 244**  
**0+12.00**  
**(MM 0.002)**  
**BEGIN PROJECT**  
**STP 2710(1)**  
**BEGIN COLD PLANE**  
**AND OVERLAY**

646.602 TEMPORARY 4" WHITE LINE, PAINT  
 646.402 DURABLE 4" WHITE LINE, THERMOPLASTIC  
 646.403 DURABLE 4" WHITE LINE, EPOXY PAINT  
 646.404 DURABLE 4" WHITE LINE, POLYUREA  
 0+10 TO 5+75 SOLID LT  
 0+11 TO 5+75 SOLID RT

646.612 TEMPORARY 4" YELLOW LINE, PAINT  
 646.412 DURABLE 4" YELLOW LINE, THERMOPLASTIC  
 646.413 DURABLE 4" YELLOW LINE, EPOXY PAINT  
 646.414 DURABLE 4" YELLOW LINE, POLYUREA  
 0+23 TO 5+75 SOLID LT & RT

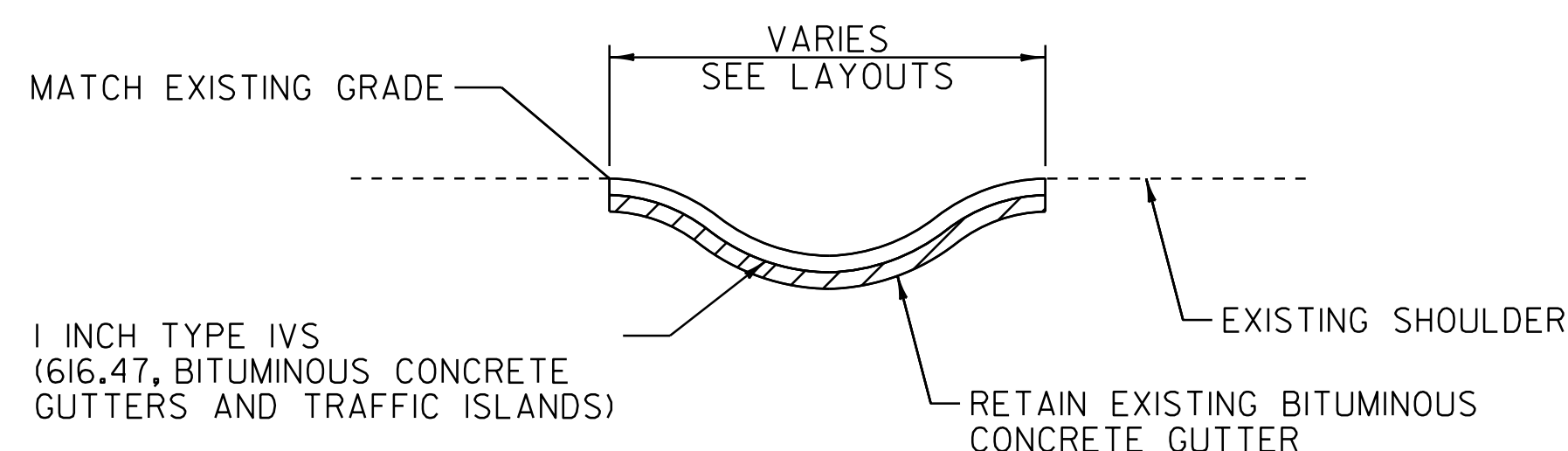
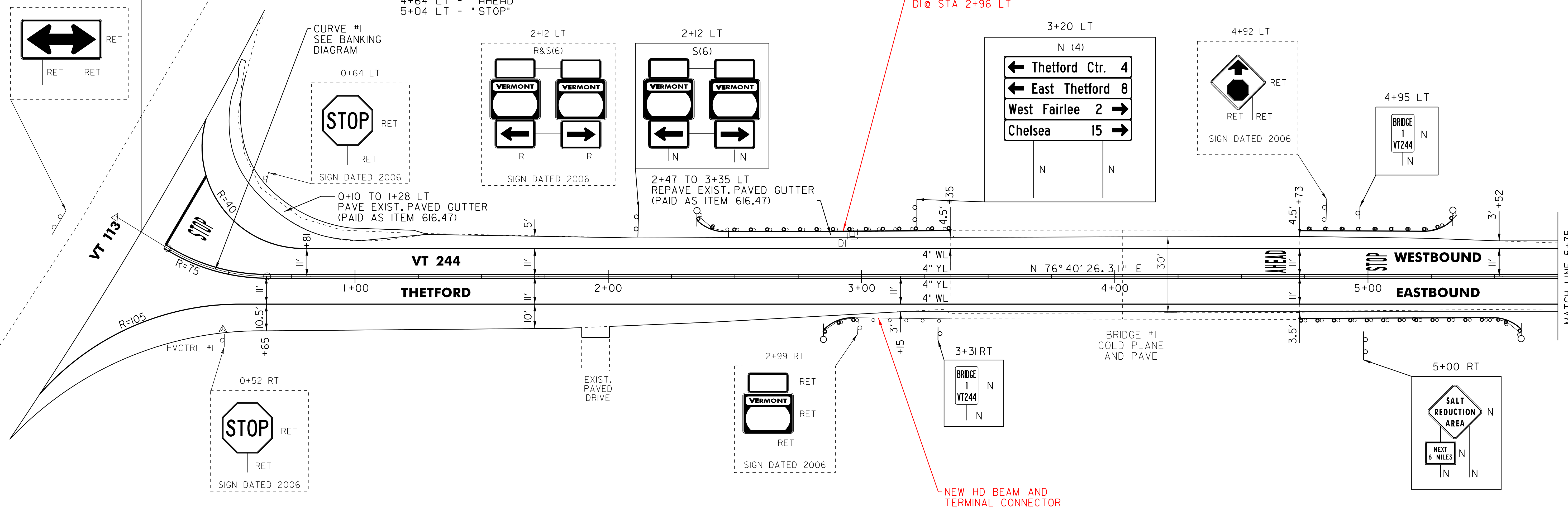
646.682 TEMPORARY 24" STOP BAR, PAINT  
 646.482 DURABLE 24" STOP BAR, THERMOPLASTIC  
 646.483 DURABLE 24" STOP BAR, EPOXY PAINT  
 646.484 DURABLE 24" STOP BAR, POLYUREA  
 0+23 LT

646.692 TEMPORARY LETTER OR SYMBOL, PAINT  
 646.492 DURABLE LETTER OR SYMBOL, THERMOPLASTIC  
 646.493 DURABLE LETTER OR SYMBOL, EPOXY PAINT  
 646.494 DURABLE LETTER OR SYMBOL, POLYUREA  
 0+32 LT - "STOP"  
 4+64 LT - "AHEAD"  
 5+04 LT - "STOP"

201.31 THINNING AND TRIMMING FOR SIGNS  
 2+12 LT  
 203.40 SHOULDER BERM REMOVAL  
 2+98 TO 3+35 RT  
 616.35 TREATED TIMBER CURB  
 2+47 TO 3+35 LT  
 604.40 CHANGING ELEVATION OF  
 DROP INLETS, CATCH BASINS, OR MANHOLES  
 2+96 LT  
 616.47 BITUMINOUS CONCRETE  
 GUTTERS AND TRAFFIC ISLANDS  
 0+10 TO 1+28 LT  
 2+47 TO 3+35 LT

621.20 STEEL BEAM GUARDRAIL, GALVANIZED  
 2+35 TO 3+10 LT  
 2+85 TO 2+97.5 RT  
 4+98 TO 5+33.5 LT  
 4+98 TO 5+60.5 RT  
 621.21 H.D. STEEL BEAM  
 GUARDRAIL, GALVANIZED  
 3+10 TO 3+35 LT 3+10 TO 3+35 RT  
 4+73 TO 4+98 LT  
 4+73 TO 4+98 RT  
 621.53 TERMINAL CONNECTOR  
 FOR STEEL BEAM GUARDRAIL  
 3+35 LT 3+35 RT  
 4+73 LT  
 4+73 RT  
 621.60 ANCHOR FOR STEEL BEAM RAIL  
 2+35 LT  
 2+85 RT  
 5+33.5 LT  
 5+60.5 RT

621.80 REMOVAL AND DISPOSAL OF GUARDRAIL  
 2+35 TO 3+33 LT  
 2+85 TO 2+97.5 RT  
 4+75 TO 5+35 LT  
 4+75 TO 5+60 RT  
 900.620 SPECIAL PROVISION  
 (DELINEATOR WITH STEEL POST)  
 (AT GUARDRAIL TERMINAL)  
 2+35.0 LT  
 2+85.0 RT  
 5+33.5 LT  
 5+60.5 RT  
 675.50 REMOVING SIGNS  
 AS SHOWN - 6  
 675.60 ERECTING SALVAGED SIGNS  
 AS SHOWN - 6  
 ENVIRONMENTALLY SENSITIVE LOCATION  
 2+71 TO 5+21 LT & RT (FORESTED)



**BITUMINOUS CONCRETE GUTTERS**  
**AND TRAFFIC ISLANDS**

NOT TO SCALE

NOT TO SCALE

**LEGEND**

- R = REMOVE EXISTING
- S = SALVAGE
- R&S = REMOVE AND SALVAGE
- N = NEW
- RET = RETAIN
- B-B = BACK TO BACK
- = EXISTING GUARDRAIL
- = PROPOSED GUARDRAIL
- YL = YELLOW LINE
- WL = WHITE LINE
- = DELINEATOR
- = PAVEMENT CORE

**ROADWAY LAYOUT 1**

PROJECT NAME: THETFORD-FAIRLEE

PROJECT NUMBER: STP 2710(1)

FILE NAME: /pave/07c184/pci84

PROJECT LEADER: PTS

DESIGNED BY: NLL

IPARM FILE NAME: 07C184\_20

PLOT DATE: 14-OCT-2013 16:35

DRAWN BY: SNG

CHECKED BY: DAM/PTS

SHEET 19 OF 77