

GPS CONTROL POINTS

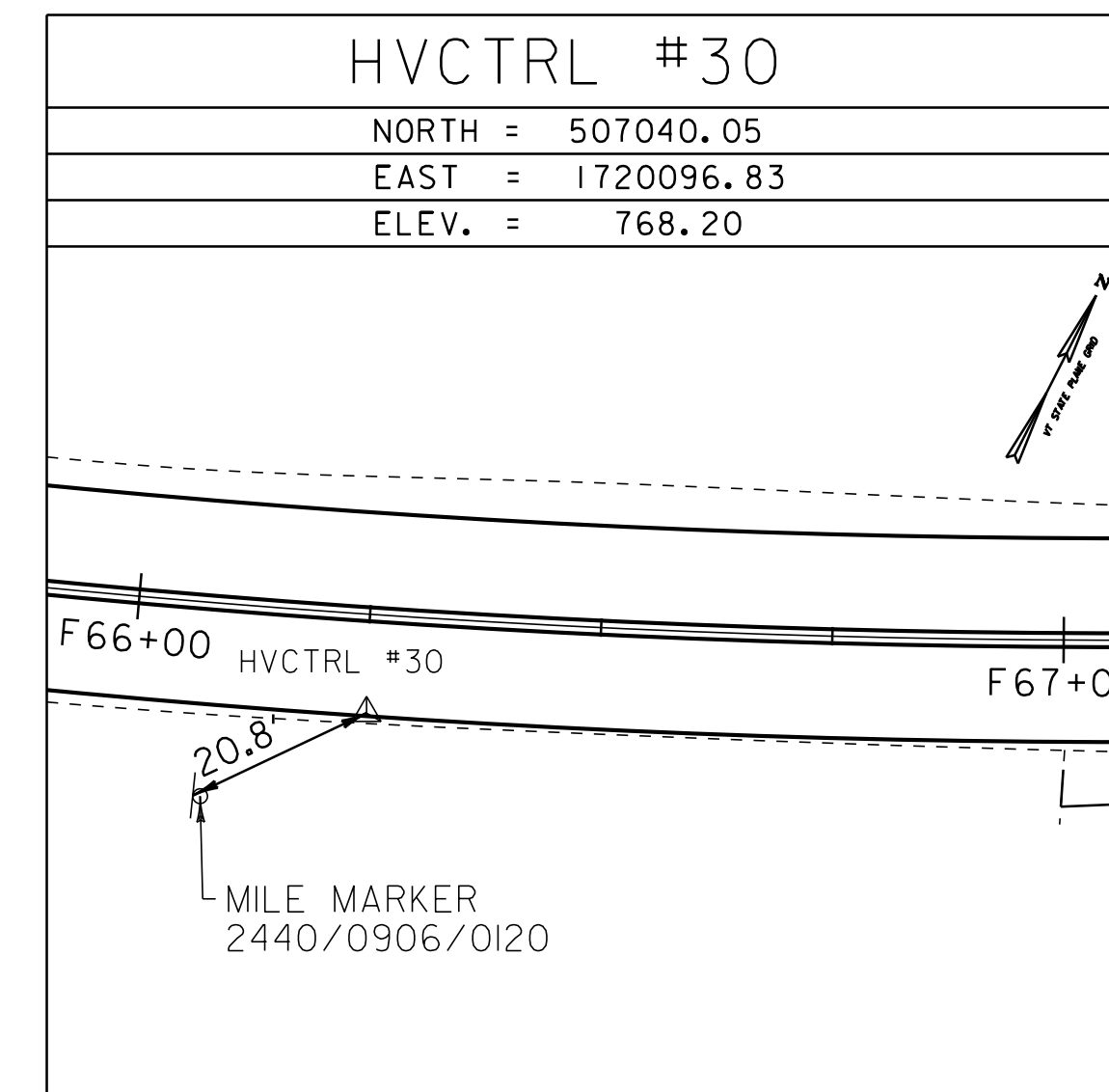
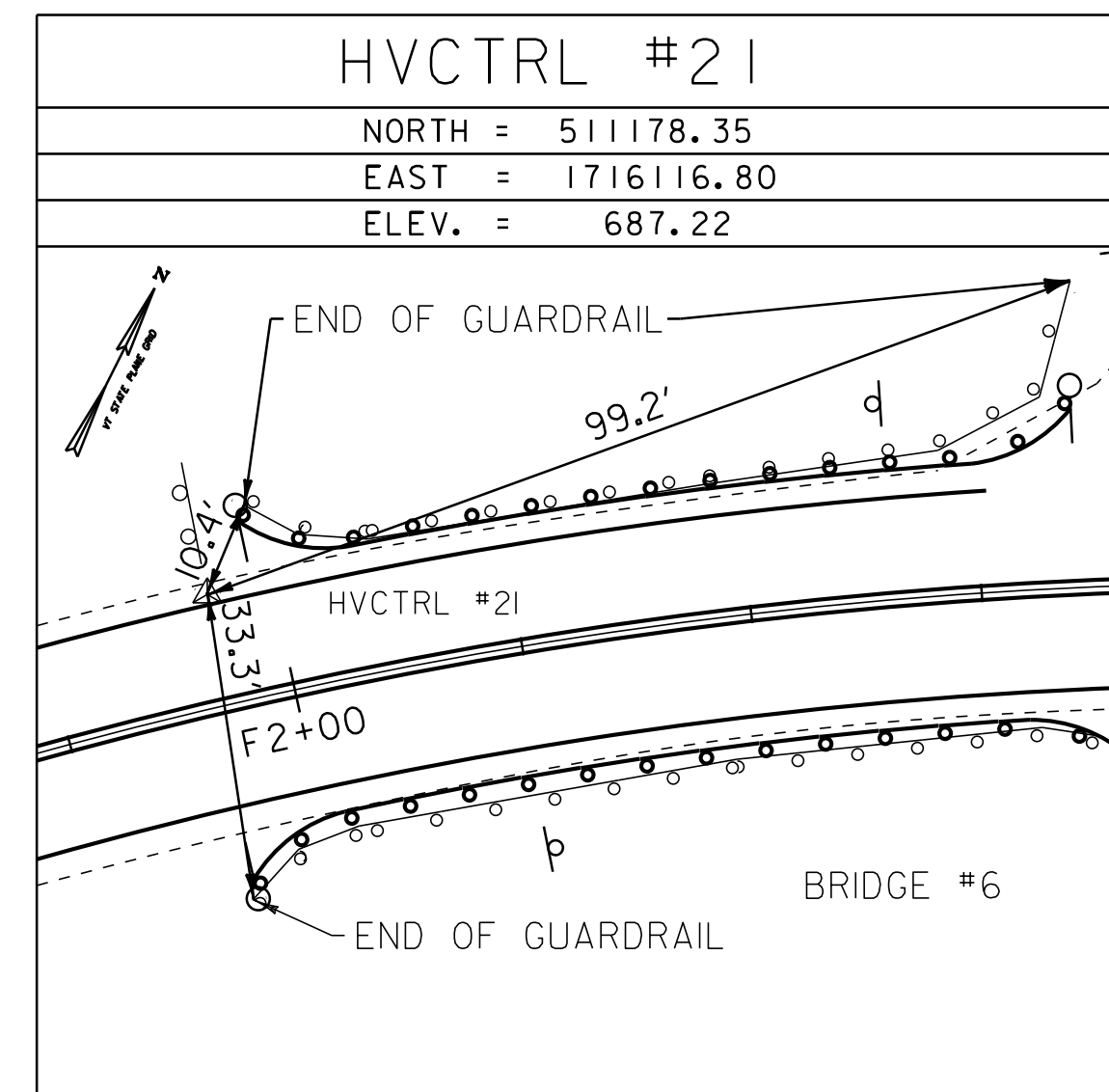
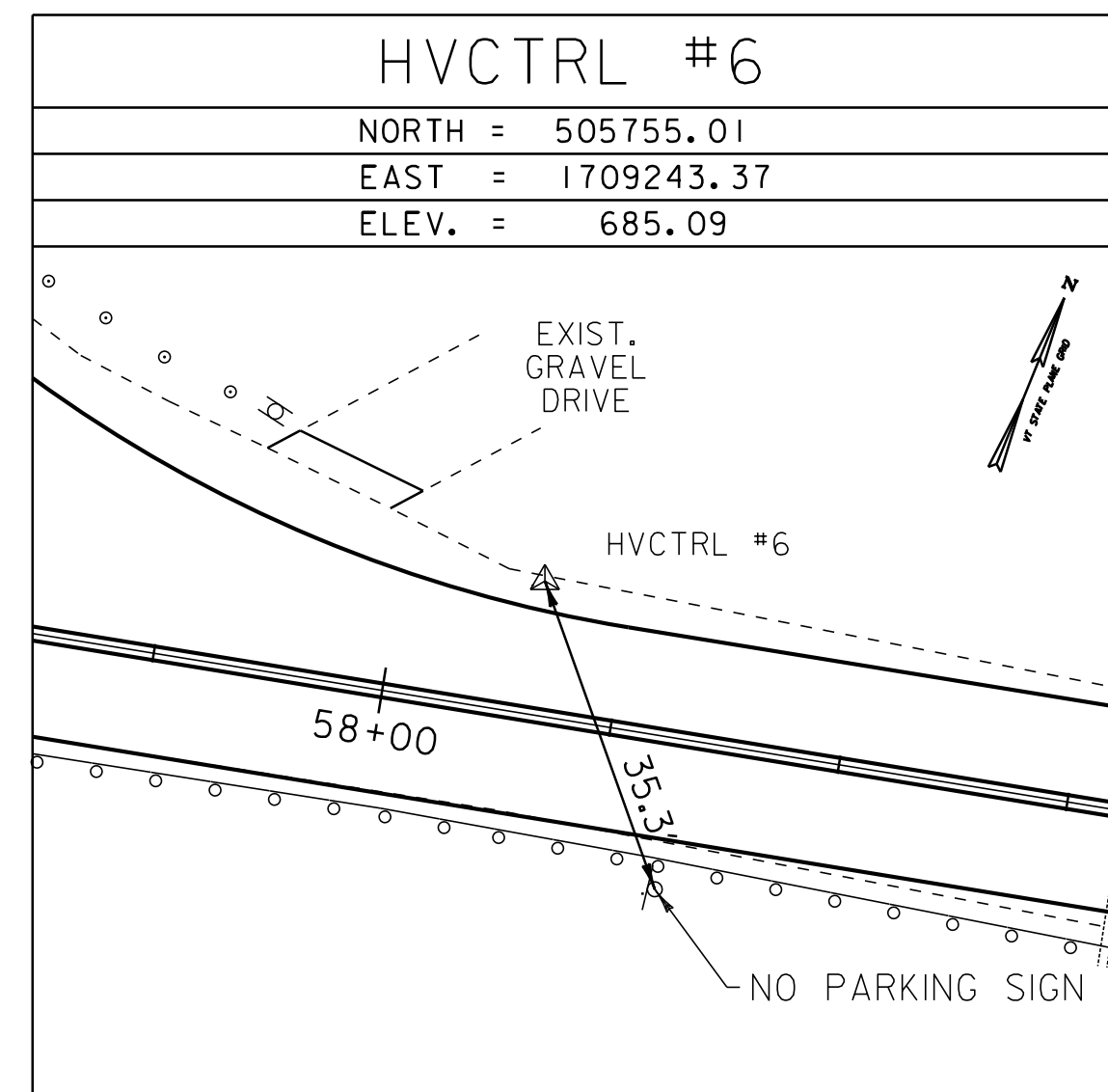
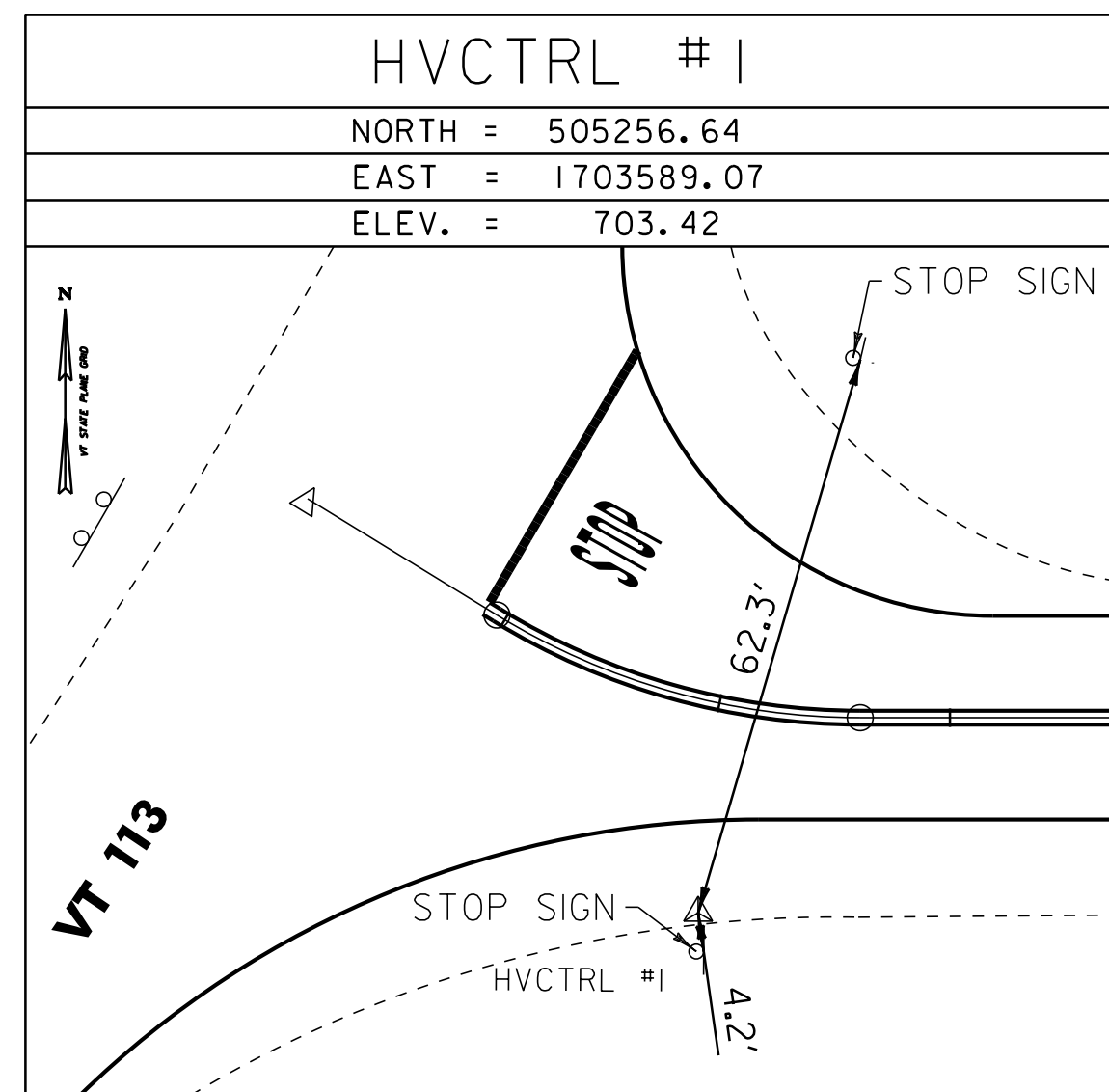
HVCTRL #57

T 57

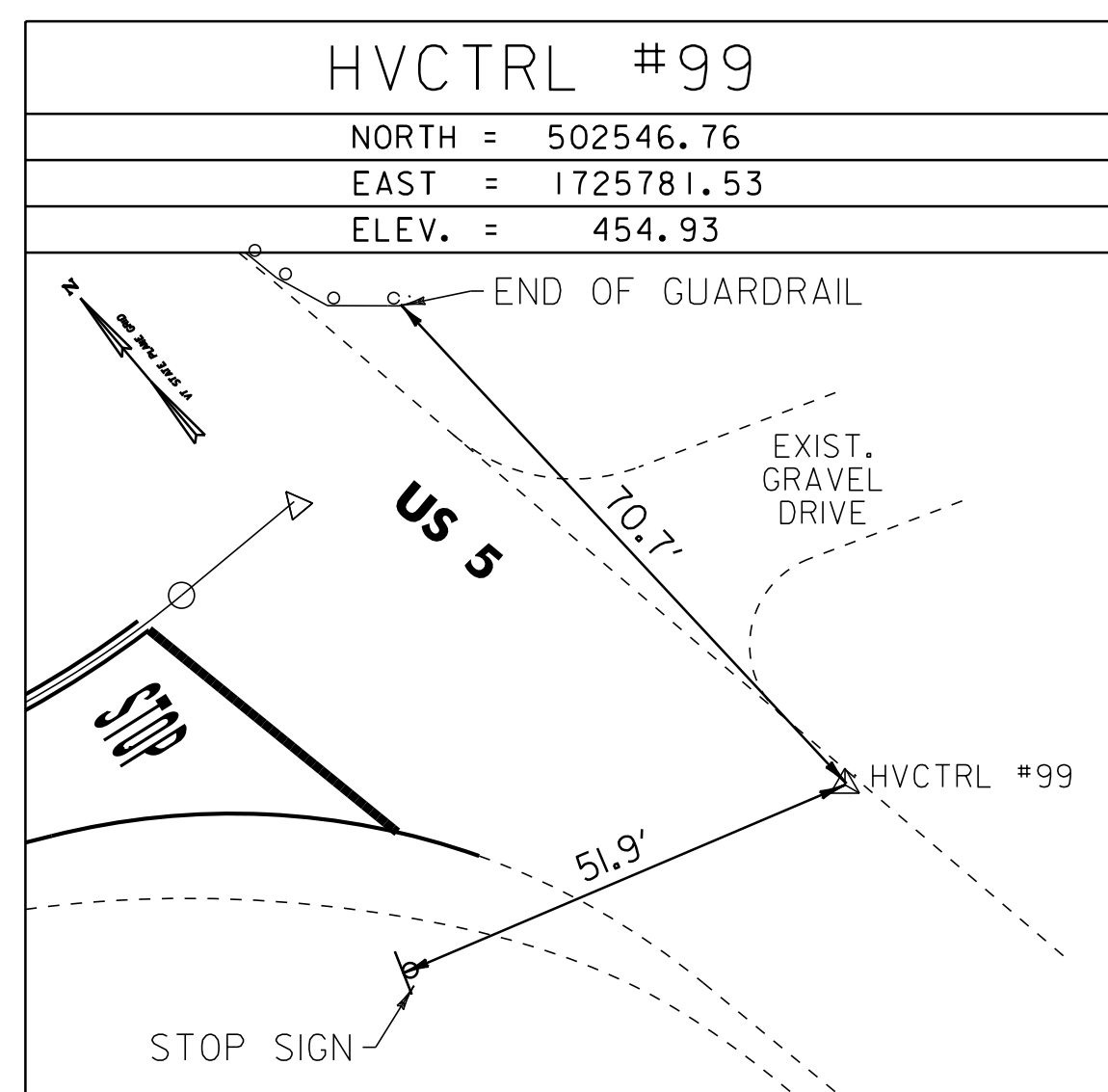
NORTH = 499354.26
 EAST = 1724428.56
 ELEV. = 429.2

DESCRIBED BY NATIONAL GEODETIC SURVEY 1978 IN ELY. 0.5 MILE SOUTH OF THE POST OFFICE, OLD RAILROAD STATION IN ELY TO THE MARK ON THE LEFT, 1.95 MILE NORTH ALONG STATE HIGHWAY 5 FROM THE POST OFFICE IN NORTH THETFORD, SET ALONG SIDE OF POWER POLE NUMBER 20, 40.5 FEET NORTHWEST OF THE NORTHWEST RAIL, 22.5 FEET SOUTHEAST OF THE CENTER LINE OF THE HIGHWAY, 1.5 FEET NORTHEAST OF THE POWER POLE.

TRAVERSE TIES



TRAVERSE TIES



NOT TO SCALE

TIE SHEET

PROJECT NAME: THETFORD-FAIRLEE

PROJECT NUMBER: STP 2710(I)

FILE NAME: /pave/07c184/pci84

PROJECT LEADER: PTS

DESIGNED BY: NULL

IPARM FILE NAME: 07C184_3

PLOT DATE: 14-OCT-2013 16:34

DRAWN BY: SNG

CHECKED BY: NULL

SHEET 3 OF 77