

DURABLE 4 INCH WHITE LINE (SEE OPTION ITEMS)
 STA. A 123+25 - STA. A 129+50 (SOLID LT & RT)
 (WITH EDGE LINE BREAKS AT TH#7)
 STA. A 127+90 (EDGE LINES AT TH#7)

DURABLE 4 INCH YELLOW LINE (SEE OPTION ITEMS)
 STA. A 123+25 - STA. A 129+50 (SOLID LT & RT)
 (WITH CENTERLINE BREAKS AT TH#7)
 STA. A 127+90 (CENTERLINE AT TH#7)

DURABLE 24 INCH STOP BAR (SEE OPTIONS ITEMS)
 STA. A 127+61 - STA. A 127+91 LT

DURABLE LETTER OR SYMBOL (SEE OPTIONS ITEMS)
 STA. A 127+80 LT "STOP"

REMOVING SIGNS
 AS SHOWN - 6

TEMPORARY 4 INCH WHITE LINE, PAINT
 STA. A 123+25 - STA. A 129+50 (SOLID LT & RT)
 (WITH EDGE LINE BREAKS AT TH#7)
 STA. A 127+90 (EDGE LINES AT TH#7)

TEMPORARY 4 INCH YELLOW LINE, PAINT
 STA. A 123+25 - STA. A 129+50 (SOLID LT & RT)
 (WITH CENTERLINE BREAKS AT TH#7)
 STA. A 127+90 (CENTERLINE AT TH#7)

TEMPORARY 24 INCH STOP BAR, PAINT
 STA. A 127+61 - STA. A 127+91 LT

TEMPORARY LETTER OR SYMBOL, PAINT
 STA. A 127+80 LT "STOP"

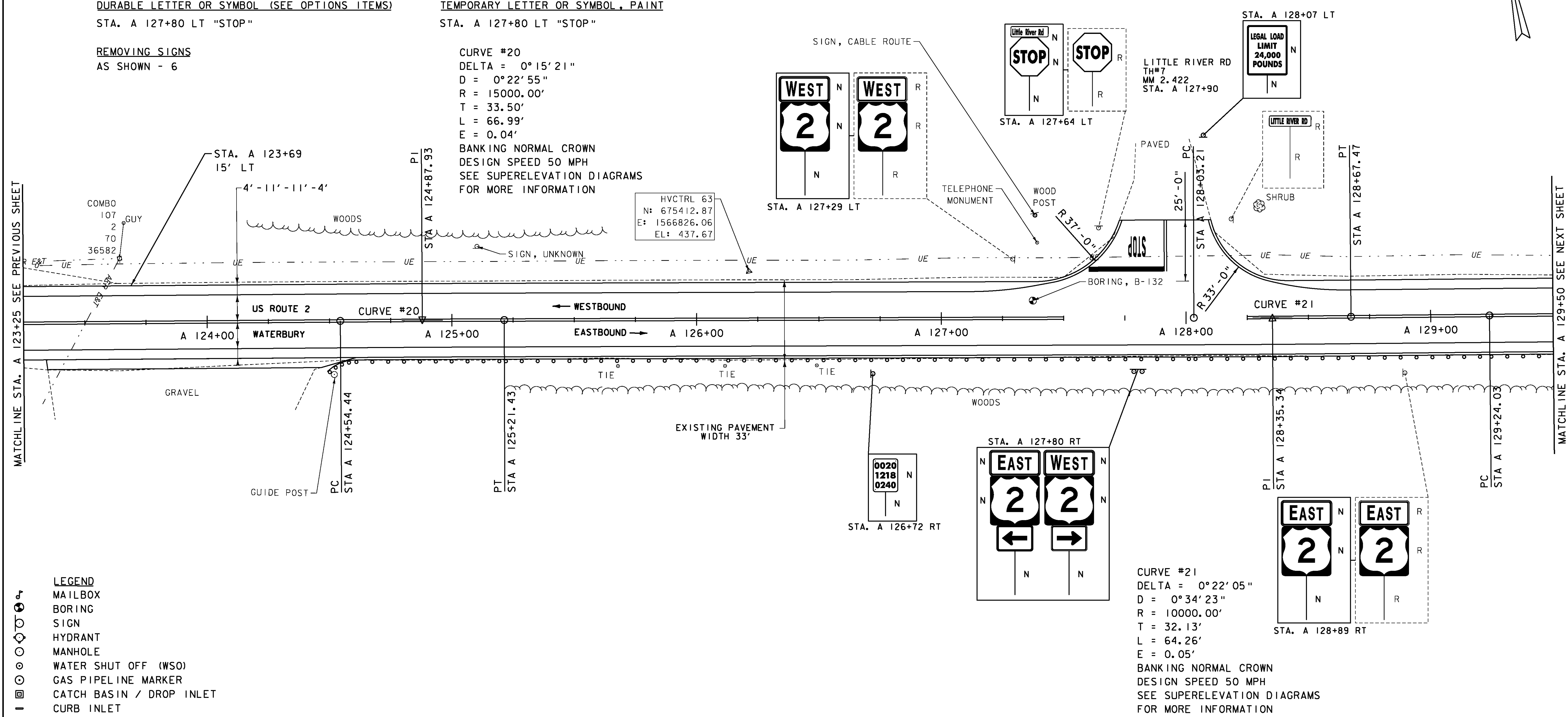
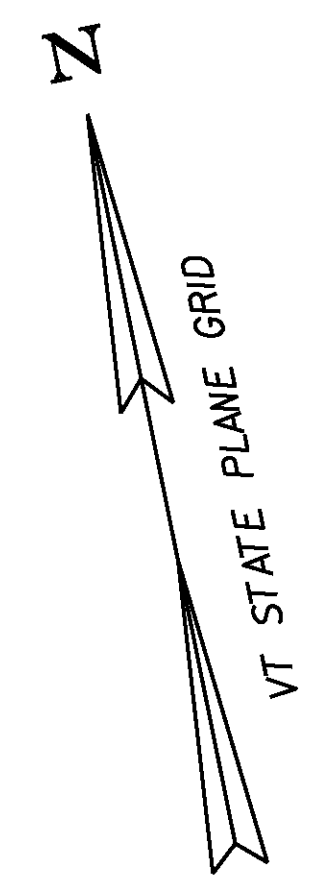
CURVE #20
 DELTA = 0°15'21"
 D = 0°22'55"
 R = 15000.00'
 T = 33.50'
 L = 66.99'
 E = 0.04'
 BANKING NORMAL CROWN
 DESIGN SPEED 50 MPH
 SEE SUPERELEVATION DIAGRAMS
 FOR MORE INFORMATION

HVCTRL 63
 N: 675412.87
 E: 1566826.06
 EL: 437.67

REMOVE AND RESET GUARDRAIL
 STA. A 124+61.5 - STA. A 129+50 RT

REMOVAL AND DISPOSAL OF GUARDRAIL
 STA. A 124+49 - STA. A 124+61.5 RT

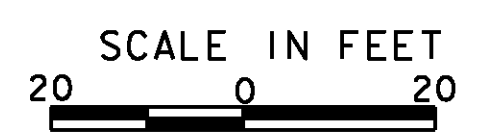
STEEL BEAM GUARDRAIL, GALVANIZED W/8 FEET POSTS
 STA. A 124+49 - STA. A 124+61.5 RT



- LEGEND**
- MAILBOX
 - BORING
 - SIGN
 - HYDRANT
 - MANHOLE
 - WATER SHUT OFF (WSO)
 - GAS PIPELINE MARKER
 - CATCH BASIN / DROP INLET
 - CURB INLET
 - TRAFFIC CONTROL BOX
 - PARKING METER
 - UTILITY POLE

- SIGN LEGEND**
- R = REMOVE
 - R&S = REMOVE AND SALVAGE
 - RET = RETAIN
 - S = SALVAGE
 - N = NEW
 - B-B = BACK TO BACK
 - = EXISTING
 - = NEW

DATUM
 VERTICAL NAVD 88
 HORIZONTAL NAD 83



PROJECT LAYOUT SHEET 57	PROJECT NAME: BOLTON - WATERBURY	PLOT DATE: 4/16/2013
	PROJECT NUMBER: STP 2709 (1)	DRAWN BY: JBG/BMB
	FILE NAME: p07C172.dgn	CHECKED BY: CDL
	DESIGNED BY: BMB	SHEET 81 OF 217
	PLOT FILE: p07C172_81.i	