

DURABLE 4 INCH WHITE LINE (SEE OPTION ITEMS)
 STA. A 5+50 - STA. A 11+25 (SOLID LT & RT)

TEMPORARY 4 INCH WHITE LINE, PAINT
 STA. A 5+50 - STA. A 11+25 (SOLID LT & RT)

DURABLE 4 INCH YELLOW LINE (SEE OPTION ITEMS)
 STA. A 5+50 - STA. A 11+25 (SOLID LT & RT)

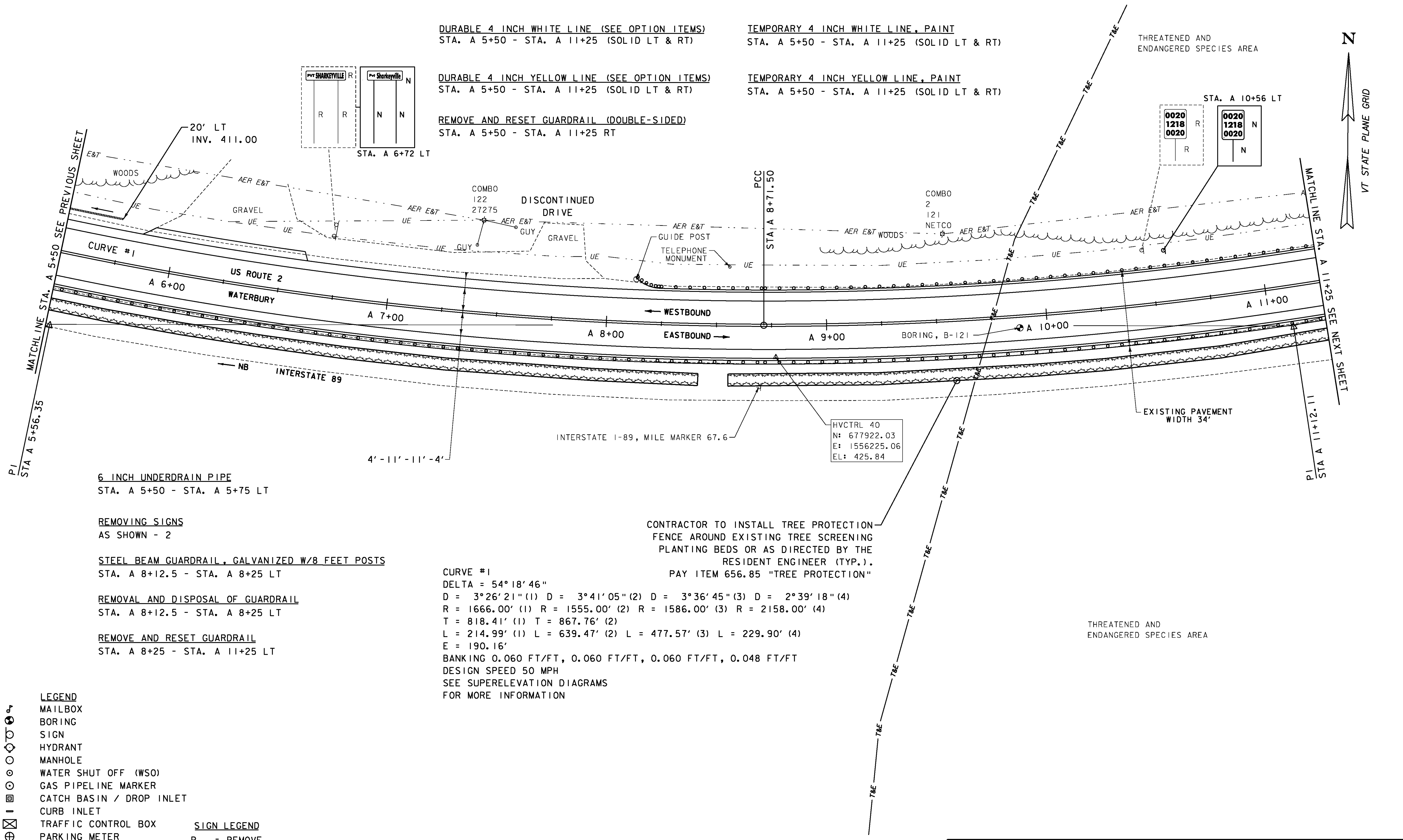
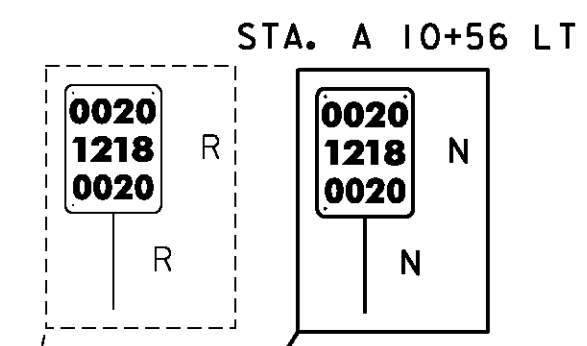
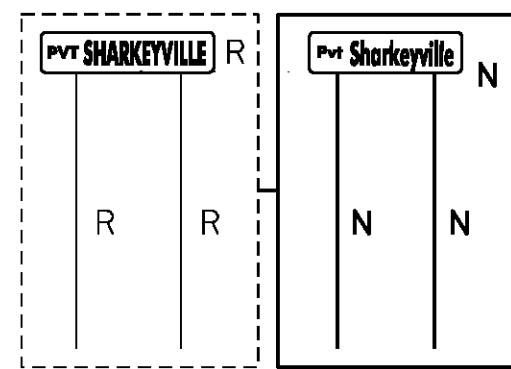
TEMPORARY 4 INCH YELLOW LINE, PAINT
 STA. A 5+50 - STA. A 11+25 (SOLID LT & RT)

REMOVE AND RESET GUARDRAIL (DOUBLE-SIDED)
 STA. A 5+50 - STA. A 11+25 RT

THREATENED AND
 ENDANGERED SPECIES AREA

N

VT STATE PLANE GRID



6 INCH UNDERDRAIN PIPE
 STA. A 5+50 - STA. A 5+75 LT

REMOVING SIGNS
 AS SHOWN - 2

STEEL BEAM GUARDRAIL, GALVANIZED W/8 FEET POSTS
 STA. A 8+12.5 - STA. A 8+25 LT

REMOVAL AND DISPOSAL OF GUARDRAIL
 STA. A 8+12.5 - STA. A 8+25 LT

REMOVE AND RESET GUARDRAIL
 STA. A 8+25 - STA. A 11+25 LT

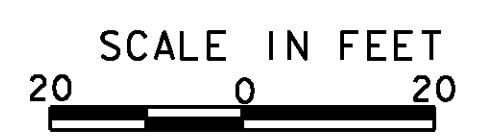
CONTRACTOR TO INSTALL TREE PROTECTION
 FENCE AROUND EXISTING TREE SCREENING
 PLANTING BEDS OR AS DIRECTED BY THE
 RESIDENT ENGINEER (TYP.).
 PAY ITEM 656.85 "TREE PROTECTION"

CURVE #1
 DELTA = 54° 18' 46"
 D = 3° 26' 21" (1) D = 3° 41' 05" (2) D = 3° 36' 45" (3) D = 2° 39' 18" (4)
 R = 1666.00' (1) R = 1555.00' (2) R = 1586.00' (3) R = 2158.00' (4)
 T = 818.41' (1) T = 867.76' (2)
 L = 214.99' (1) L = 639.47' (2) L = 477.57' (3) L = 229.90' (4)
 E = 190.16'
 BANKING 0.060 FT/FT, 0.060 FT/FT, 0.060 FT/FT, 0.048 FT/FT
 DESIGN SPEED 50 MPH
 SEE SUPERELEVATION DIAGRAMS
 FOR MORE INFORMATION

- LEGEND**
- MAILBOX
 - BORING
 - SIGN
 - HYDRANT
 - MANHOLE
 - WATER SHUT OFF (WSO)
 - GAS PIPELINE MARKER
 - CATCH BASIN / DROP INLET
 - CURB INLET
 - TRAFFIC CONTROL BOX
 - PARKING METER
 - UTILITY POLE

- SIGN LEGEND**
- R = REMOVE
 - R&S = REMOVE AND SALVAGE
 - RET = RETAIN
 - S = SALVAGE
 - N = NEW
 - B-B = BACK TO BACK
 - = EXISTING
 - = NEW

DATUM
 VERTICAL NAVD 88
 HORIZONTAL NAD 83



PROJECT LAYOUT SHEET 37	PROJECT NAME: BOLTON - WATERBURY	PLOT DATE: 4/16/2013
	PROJECT NUMBER: STP 2709 (1)	DRAWN BY: JBG/BMB
	FILE NAME: p07C172.dgn	CHECKED BY: CDL
	DESIGNED BY: BMB	SHEET 61 OF 217
	PLOT FILE: p07C172-61.i	