

DURABLE 4 INCH WHITE LINE (SEE OPTION ITEMS)
STA. 175+75 - STA. 181+25 (SOLID LT & RT)

DURABLE 4 INCH YELLOW LINE (SEE OPTION ITEMS)
STA. 175+75 - STA. 181+25 (DASHED)

TEMPORARY 4 INCH WHITE LINE, PAINT
STA. 175+75 - STA. 181+25 (SOLID LT & RT)

TEMPORARY 4 INCH YELLOW LINE, PAINT
STA. 175+75 - STA. 181+25 (DASHED)

REMOVAL OF EXISTING FENCE
STA. 181+00 - STA. 181+25 RT

CHAIN-LINK FENCE, 6 FEET
STA. 181+00 - STA. 181+25 RT

SPECIAL PROVISION (REHABILITATE EXISTING FENCE)
STA. 175+75 - STA. 181+00 RT

REMOVING SIGNS
AS SHOWN - 1

6 INCH UNDERDRAIN PIPE
STA. 176+00 - STA. 180+75 RT 180+92 RT
STA. 181+00 - STA. 181+25 RT

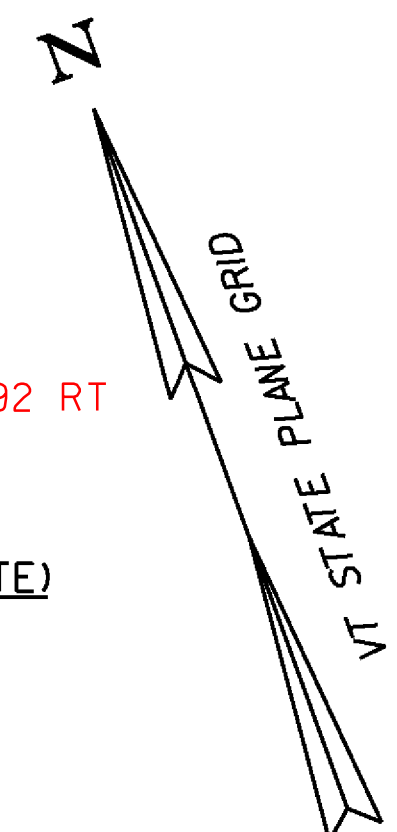
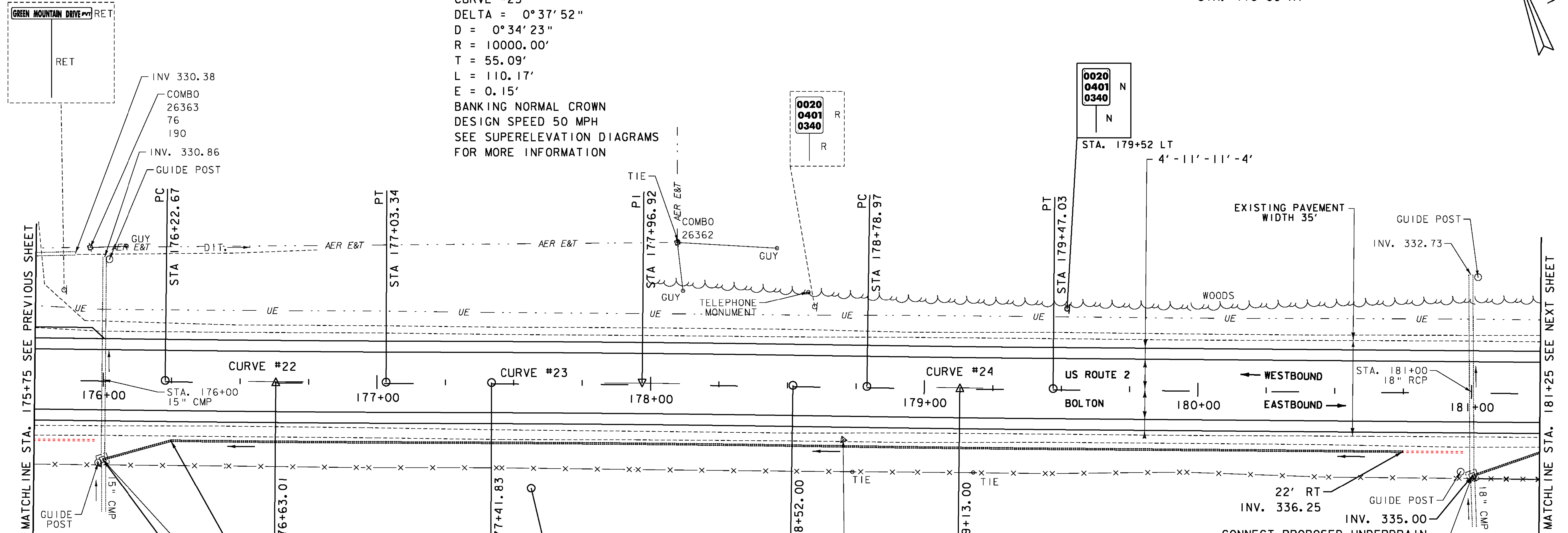
SPECIAL PROVISION (CORING CONCRETE)
STA. 176+00 RT

CURVE #23
DELTA = 0°37'52"
D = 0°34'23"
R = 10000.00'
T = 55.09'
L = 110.17'
E = 0.15'
BANKING NORMAL CROWN
DESIGN SPEED 50 MPH
SEE SUPERELEVATION DIAGRAMS
FOR MORE INFORMATION

CURVE #22
DELTA = 0°27'44"
D = 0°34'23"
R = 10000.00'
T = 40.33'
L = 80.66'
E = 0.08'
BANKING NORMAL CROWN
DESIGN SPEED 50 MPH
SEE SUPERELEVATION DIAGRAMS
FOR MORE INFORMATION

CURVE #24
DELTA = 0°23'24"
D = 0°34'23"
R = 10000.00'
T = 34.03'
L = 68.07'
E = 0.06'
BANKING NORMAL CROWN
DESIGN SPEED 50 MPH
SEE SUPERELEVATION DIAGRAMS
FOR MORE INFORMATION

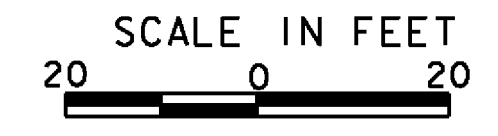
CONTRACTOR TO REMOVE ALL TREES, BRUSH,
AND SHRUBBERY BETWEEN FENCE LINE AND
1-89 (24 FT AVERAGE WIDTH) AS DIRECTED
BY THE RESIDENT ENGINEER.
PAY ITEM 900.645 "SPECIAL PROVISION (CLEARING)".
STA. 175+75 - STA. 181+25



- LEGEND**
- MAILBOX
 - BORING
 - SIGN
 - HYDRANT
 - MANHOLE
 - WATER SHUT OFF (WSO)
 - GAS PIPELINE MARKER
 - CATCH BASIN / DROP INLET
 - CURB INLET
 - TRAFFIC CONTROL BOX
 - PARKING METER
 - UTILITY POLE

- SIGN LEGEND**
- R = REMOVE
 - R&S = REMOVE AND SALVAGE
 - RET = RETAIN
 - S = SALVAGE
 - N = NEW
 - B-B = BACK TO BACK
 - = EXISTING
 - = NEW

DATUM
VERTICAL NAVD 88
HORIZONTAL NAD 83



PROJECT LAYOUT SHEET 15	PROJECT NAME: BOLTON - WATERBURY
	PROJECT NUMBER: STP 2709 (1)
	FILE NAME: p07C172.dgn
	PLOT DATE: 4/16/2013
PROJECT LEADER: CDL	DRAWN BY: JBC/BMB
DESIGNED BY: BMB	CHECKED BY: CDL
PLOT FILE: p07C172.39.i	SHEET 39 OF 217