

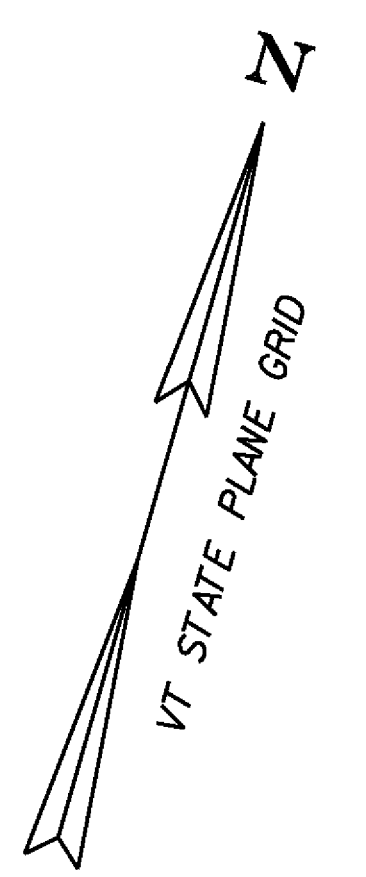
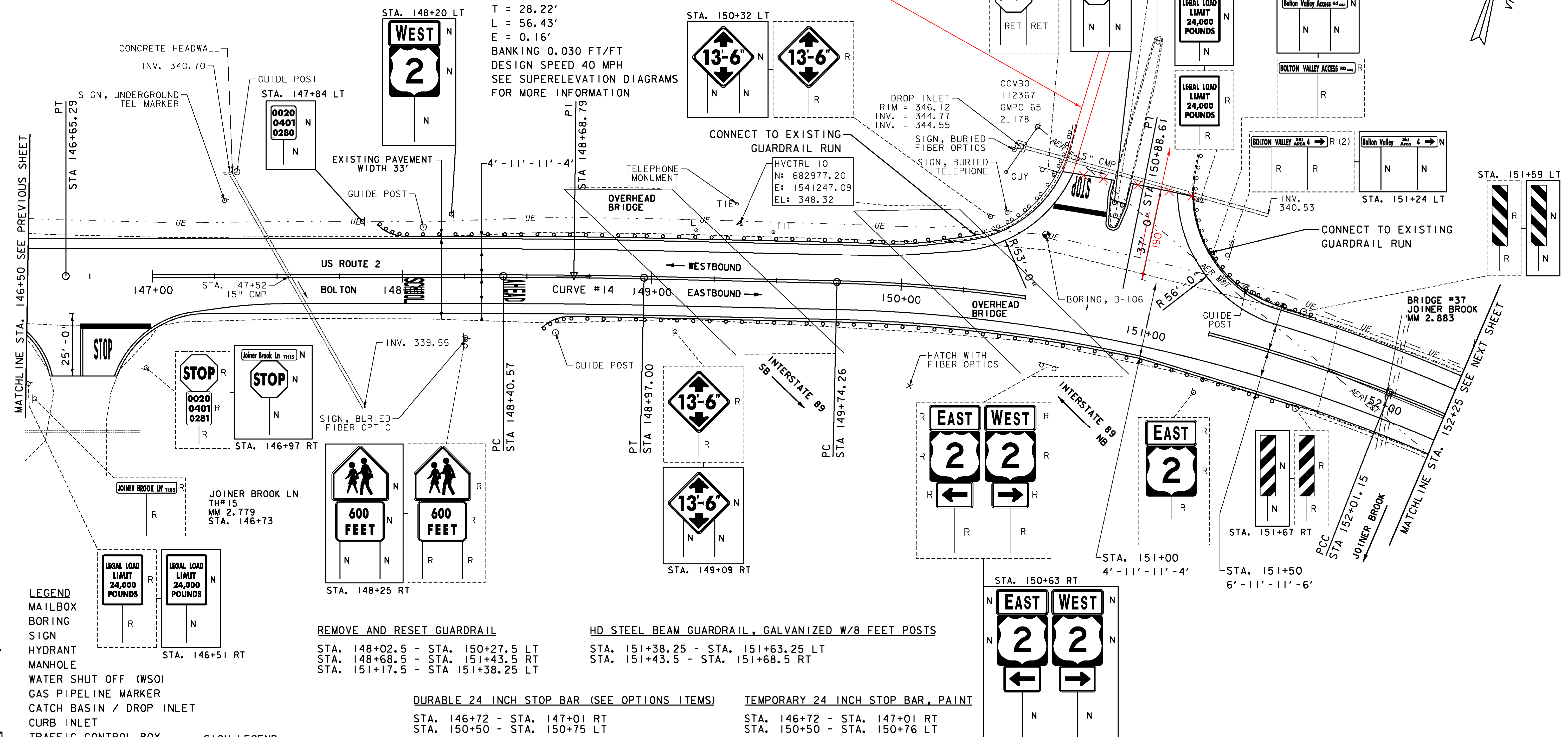
DURABLE 4 INCH WHITE LINE (SEE OPTION ITEMS)
 STA. 146+50 - STA. 152+25 (SOLID LT & RT)
 (WITH EDGE LINE BREAKS AT TH#3 & TH#15)
 STA. 146+73 (EDGE LINE AT TH#15)
 STA. 150+80 (EDGE LINE AT TH#3)
DURABLE 4 INCH YELLOW LINE (SEE OPTION ITEMS)
 STA. 146+50 - STA. 152+25 (SOLID LT & RT)
 (WITH CENTERLINE BREAKS AT TH#3 & TH#15)
 STA. 146+73 (CENTERLINE AT TH#15)
 STA. 150+80 (CENTERLINE AT TH#3)

TEMPORARY 4 INCH WHITE LINE, PAINT
 STA. 146+50 - STA. 152+25 (SOLID LT & RT)
 (WITH EDGE LINE BREAKS AT TH#3 & TH#15)
 STA. 146+73 (EDGE LINE AT TH#15)
 STA. 150+80 (EDGE LINE AT TH#3)
TEMPORARY 4 INCH YELLOW LINE, PAINT
 STA. 146+50 - STA. 152+25 (SOLID LT & RT)
 (WITH CENTERLINE BREAKS AT TH#3 & TH#15)
 STA. 146+73 (EDGE LINE AT TH#15)
 STA. 150+80 (EDGE LINE AT TH#3)

STEEL BEAM GUARDRAIL, GALVANIZED W/8 FEET POSTS
 STA. 147+90 - STA. 148+02.5 LT
 STA. 148+56 - STA. 148+68.5 RT
REMOVAL AND DISPOSAL OF GUARDRAIL
 STA. 147+90 - STA. 148+02.5 LT
 STA. 148+56 - STA. 148+68.5 RT
 STA. 151+38.25 - STA. 151+63.25 LT
 STA. 151+43.5 - STA. 151+68.5 RT

CURVE #14
 DELTA = 1°17'36"
 D = 2°17'31"
 R = 2500.00'
 T = 28.22'
 L = 56.43'
 E = 0.16'
 BANKING 0.030 FT/FT
 DESIGN SPEED 40 MPH
 SEE SUPERELEVATION DIAGRAMS
 FOR MORE INFORMATION

PAVED 190' ON BOLTON ACCESS



- LEGEND**
- MAILBOX
 - BORING
 - SIGN
 - HYDRANT
 - MANHOLE
 - WATER SHUT OFF (WSO)
 - GAS PIPELINE MARKER
 - CATCH BASIN / DROP INLET
 - CURB INLET
 - TRAFFIC CONTROL BOX
 - PARKING METER
 - UTILITY POLE

- SIGN LEGEND**
- R = REMOVE
 - R&S = REMOVE AND SALVAGE
 - RET = RETAIN
 - S = SALVAGE
 - N = NEW
 - B-B = BACK TO BACK
 - = EXISTING
 - = NEW

REMOVE AND RESET GUARDRAIL
 STA. 148+02.5 - STA. 150+27.5 LT
 STA. 148+68.5 - STA. 151+43.5 RT
 STA. 151+17.5 - STA. 151+38.25 LT

HD STEEL BEAM GUARDRAIL, GALVANIZED W/8 FEET POSTS
 STA. 151+38.25 - STA. 151+63.25 LT
 STA. 151+43.5 - STA. 151+68.5 RT

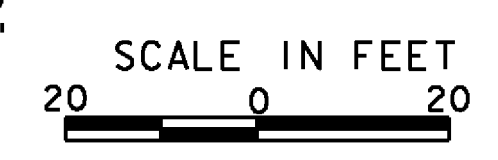
DURABLE 24 INCH STOP BAR (SEE OPTIONS ITEMS)
 STA. 146+72 - STA. 147+01 RT
 STA. 150+50 - STA. 150+75 LT

DURABLE LETTER OR SYMBOL (SEE OPTIONS ITEMS)
 STA. 146+80 RT "STOP"
 STA. 148+05 RT "SCHOOL"
 STA. 148+45 RT "AHEAD"
 STA. 150+65 LT "STOP"

TEMPORARY 24 INCH STOP BAR, PAINT
 STA. 146+72 - STA. 147+01 RT
 STA. 150+50 - STA. 150+76 LT

TEMPORARY LETTER OR SYMBOL, PAINT
 STA. 146+80 RT "STOP"
 STA. 148+05 RT "SCHOOL"
 STA. 148+45 RT "AHEAD"
 STA. 150+65 LT "STOP"

REMOVING SIGNS
 AS SHOWN - 29



PROJECT LAYOUT SHEET 10

PROJECT NAME: BOLTON - WATERBURY
PROJECT NUMBER: STP 2709 (1)
FILE NAME: p07C172.dgn
PROJECT LEADER: CDL
DESIGNED BY: BMB
PLOT FILE: p07C172.34.i
PLOT DATE: 4/16/2013
DRAWN BY: JBC/BMB
CHECKED BY: CDL
SHEET 34 OF 217

DATUM
 VERTICAL NAVD 88
 HORIZONTAL NAD 83