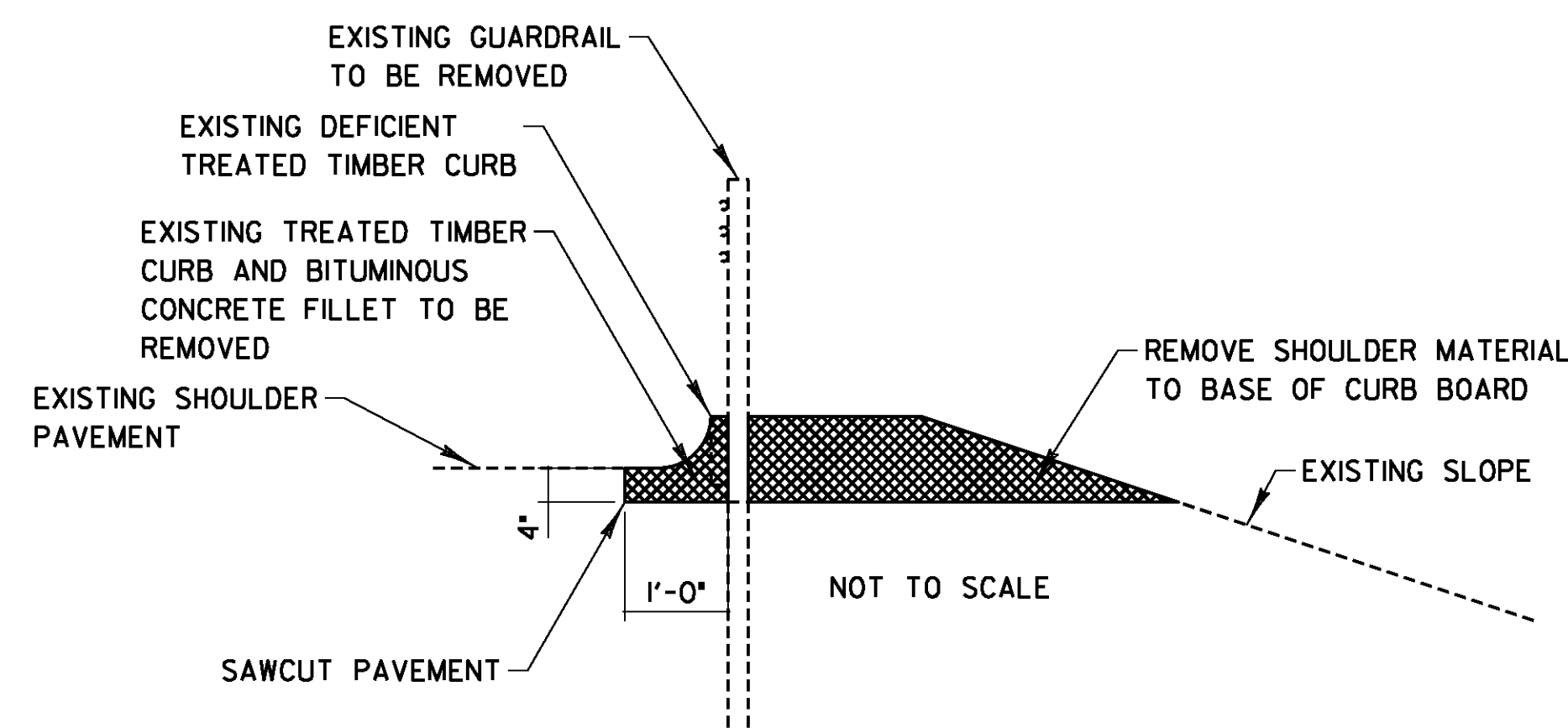


REDUCED POST SPACING GUARDRAIL DETAIL
OBJECTS WITHIN 4' OF GUARDRAIL

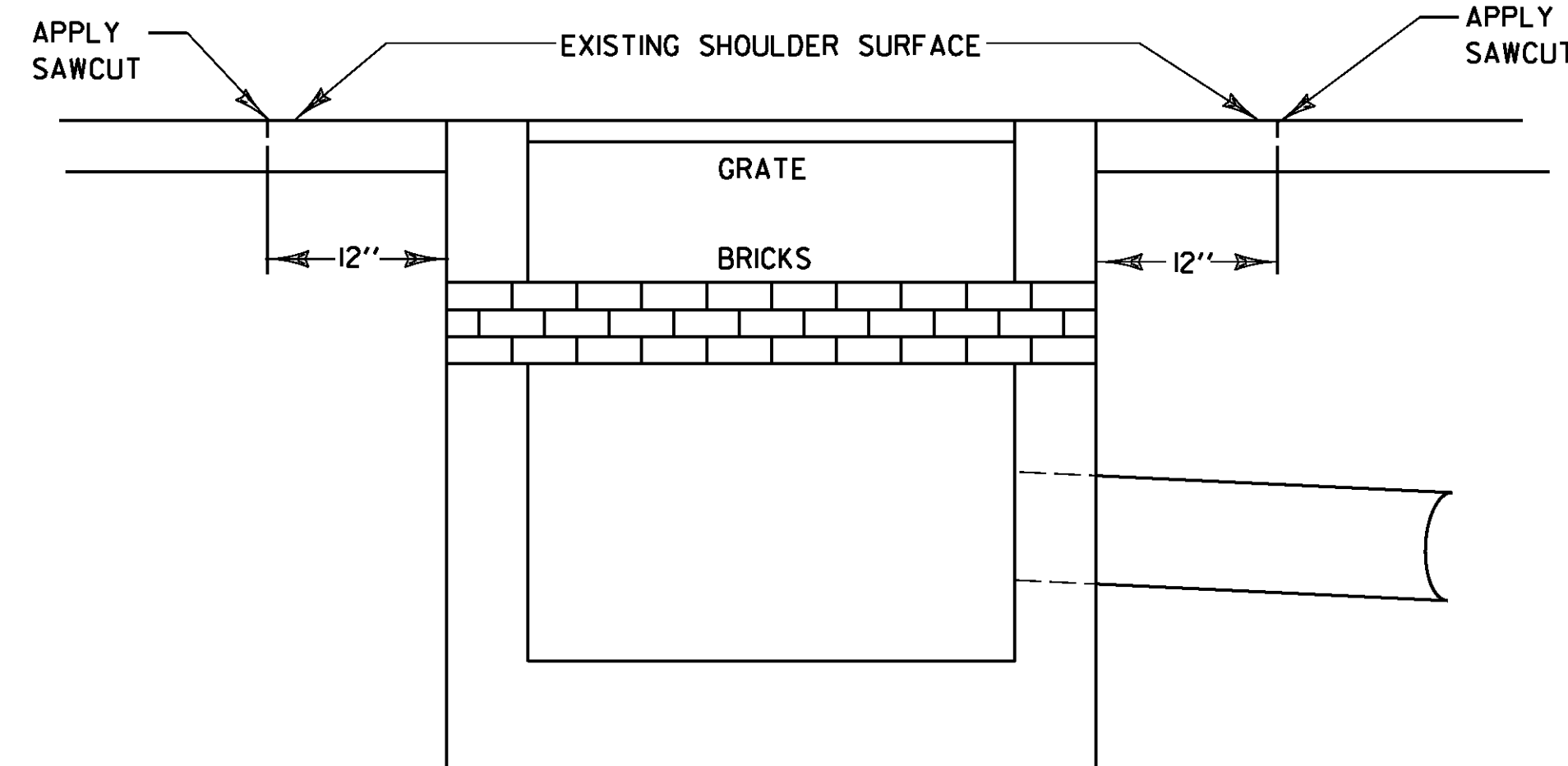
WATERBURY
STA. A 83+95 RT



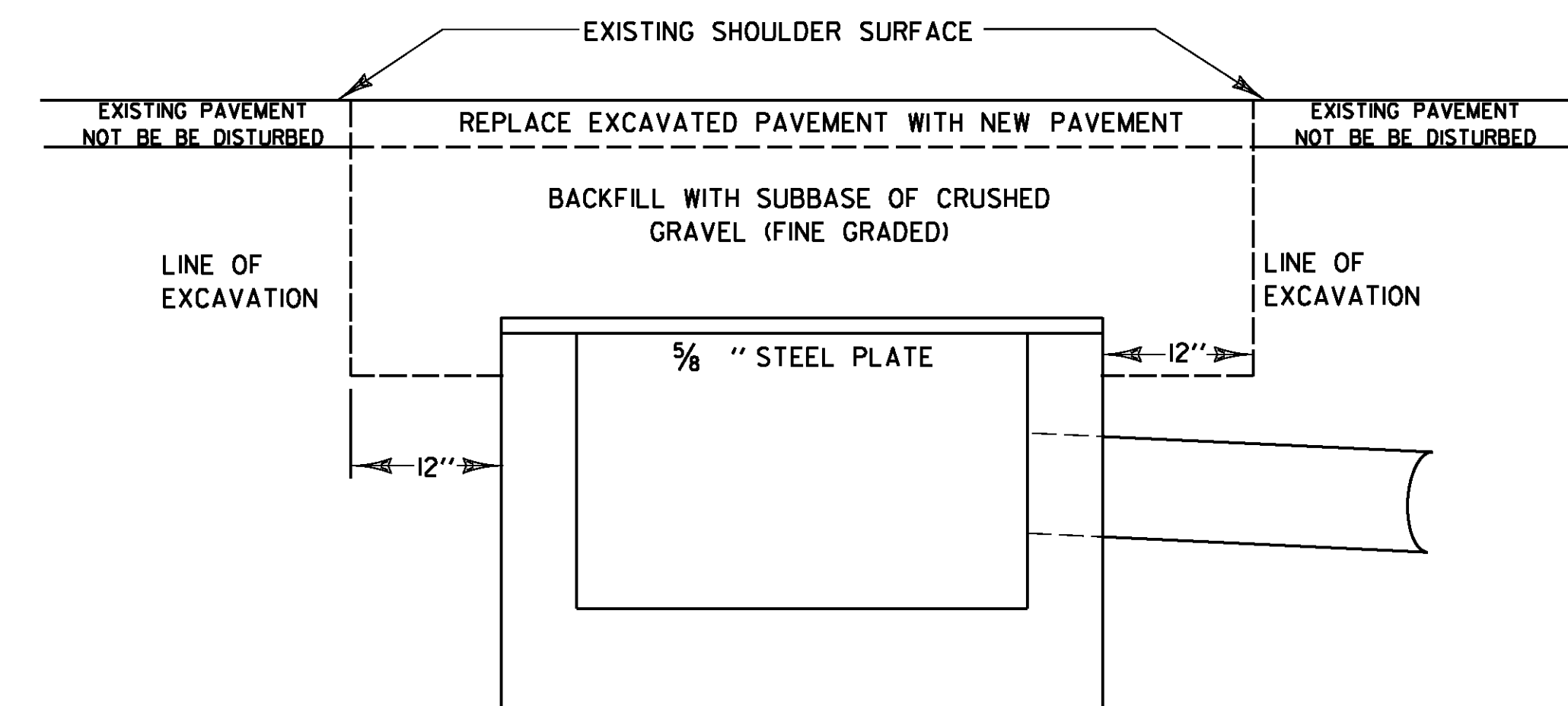
TREATED TIMBER CURB REMOVAL

WATERBURY
STA. A 14+20 - STA. A 16+50 LT

NOTE: THE REMOVAL OF TREATED TIMBER CURBING, INCLUDING THE BITUMINOUS CONCRETE FILLET, AND ANY SAWCUTTING FROM INSTALLATIONS WHERE EXISTING GUARDRAIL IS REMOVED WILL NOT BE PAID FOR DIRECTLY BUT WILL BE CONSIDERED INCIDENTAL TO REMOVAL AND DISPOSAL OF GUARDRAIL.



EXISTING CURB DROP INLET

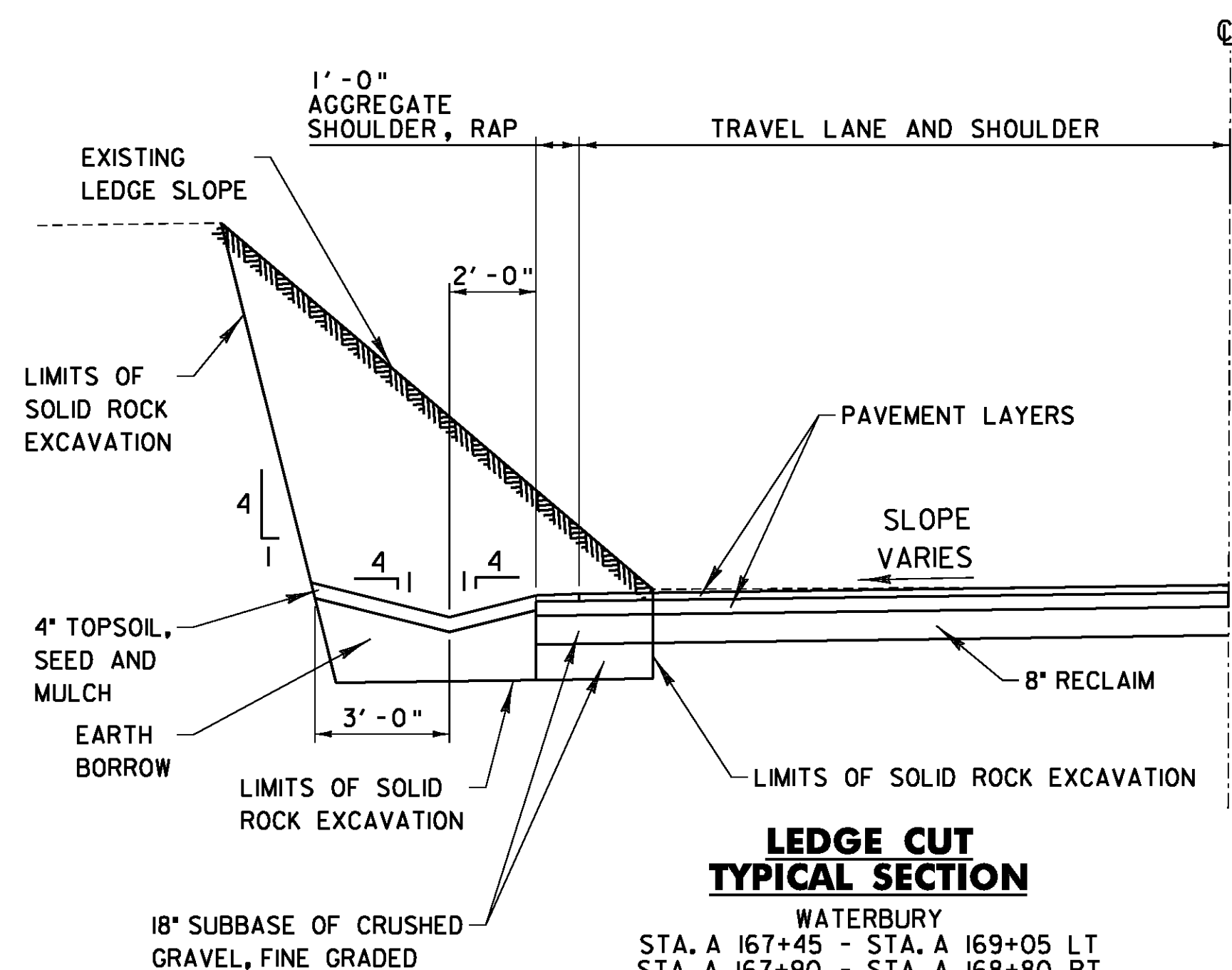


PROPOSED TREATMENT OF DROP INLET

**SPECIAL PROVISION
(CAP CURB DROP INLET) DETAIL**

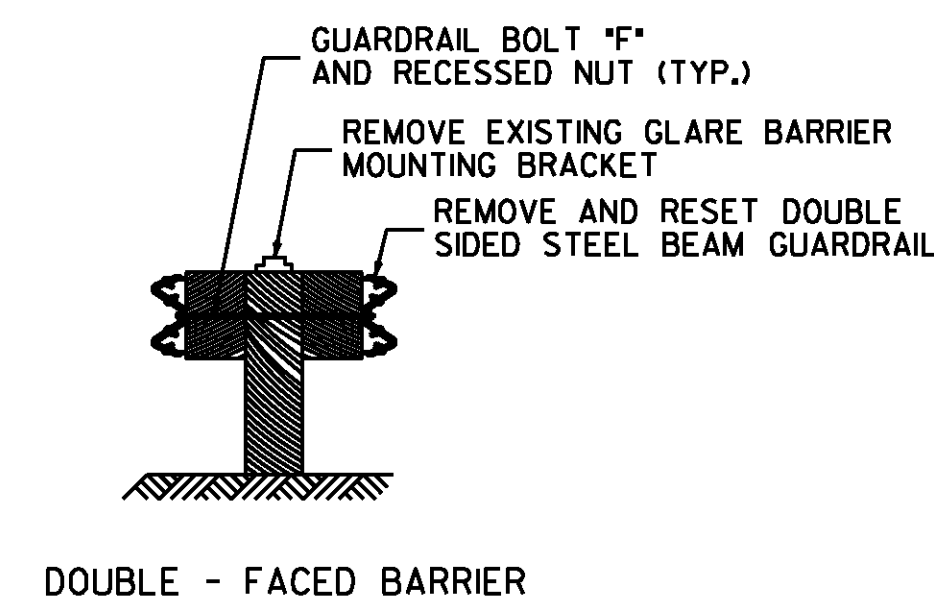
WATERBURY
STA. A 14+20 LT

SAWCUT EXISTING SHOULDER TO MINIMIZE DAMAGE TO ADJACENT PAVEMENT. EXCAVATE TO DEPTH REQUIRED & REMOVE TOP AND BRICKS FROM DI. PLACE STEEL PLATE ON DI AND BACKFILL WITH ITEM 301.28. EXCAVATED BITUMINOUS PAVEMENT SHALL BE REPLACED WITH NEW BITUMINOUS CONCRETE PAVEMENT, TYPE IIS. APPLICATION OF SAWCUT, REMOVAL AND DISPOSAL OF TOP AND BRICKS, FURNISHING STEEL PLATE, AND REQUIRED EXCAVATION SHALL BE PAID AS ONE EACH OF ITEM 900.620 SPECIAL PROVISION (CAP CURB DROP INLET).



**LEDGE CUT
TYPICAL SECTION**

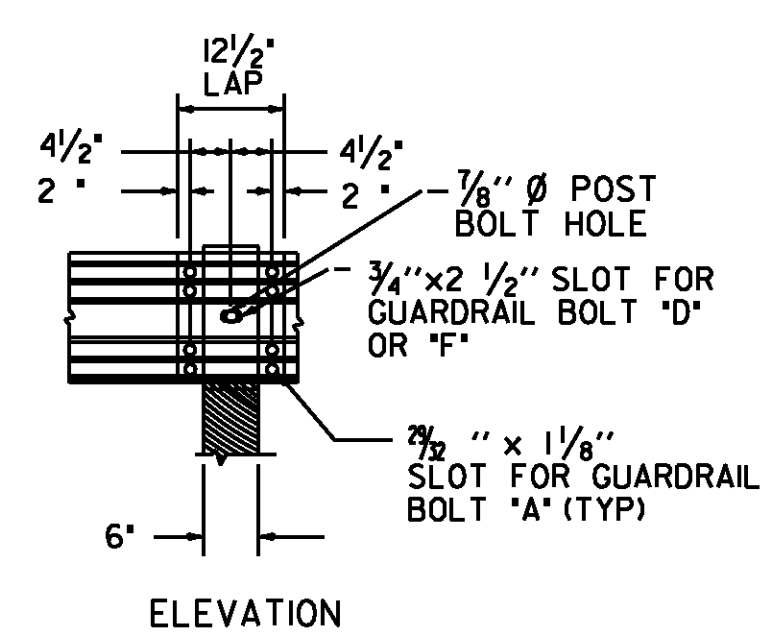
WATERBURY
STA. A 167+45 - STA. A 169+05 LT
STA. A 167+90 - STA. A 168+80 RT
STA. A 171+60 - STA. A 172+75 LT
STA. A 173+05 - STA. A 173+30 RT
STA. A 178+15 - STA. A 178+85 LT



REMOVE AND RESET GUARDRAIL (DOUBLE-SIDED)

BOLTON STA. 250+25 TO STA. 299+71 WATERBURY STA. A 0+00 TO STA. A 43+54 RT

PAYMENT FOR REMOVAL OF EXISTING GLARE BARRIER MOUNTING BRACKETS AND REMOVAL AND RESETTING DOUBLE-SIDED STEEL BEAM RAIL SHALL BE PAID UNDER ITEM 621.75 'REMOVE AND RESET GUARDRAIL (DOUBLE-SIDED)'.



ELEVATION

DETAILS ARE NOT TO SCALE

**PROJECT
TYPICAL
SHEET 5**

PROJECT NAME: BOLTON-WATERBURY
PROJECT NUMBER: STP 2709(1)

FILE NAME: x07C172.dgn
PROJECT LEADER: CDL
DESIGNED BY: BMB
PLOT FILE: x07C172.12.1

PLOT DATE: 04/17/2013
DRAWN BY: JBG/BMB
CHECKED BY: CDL
SHEET 12 OF 217