

HVCIRL #66

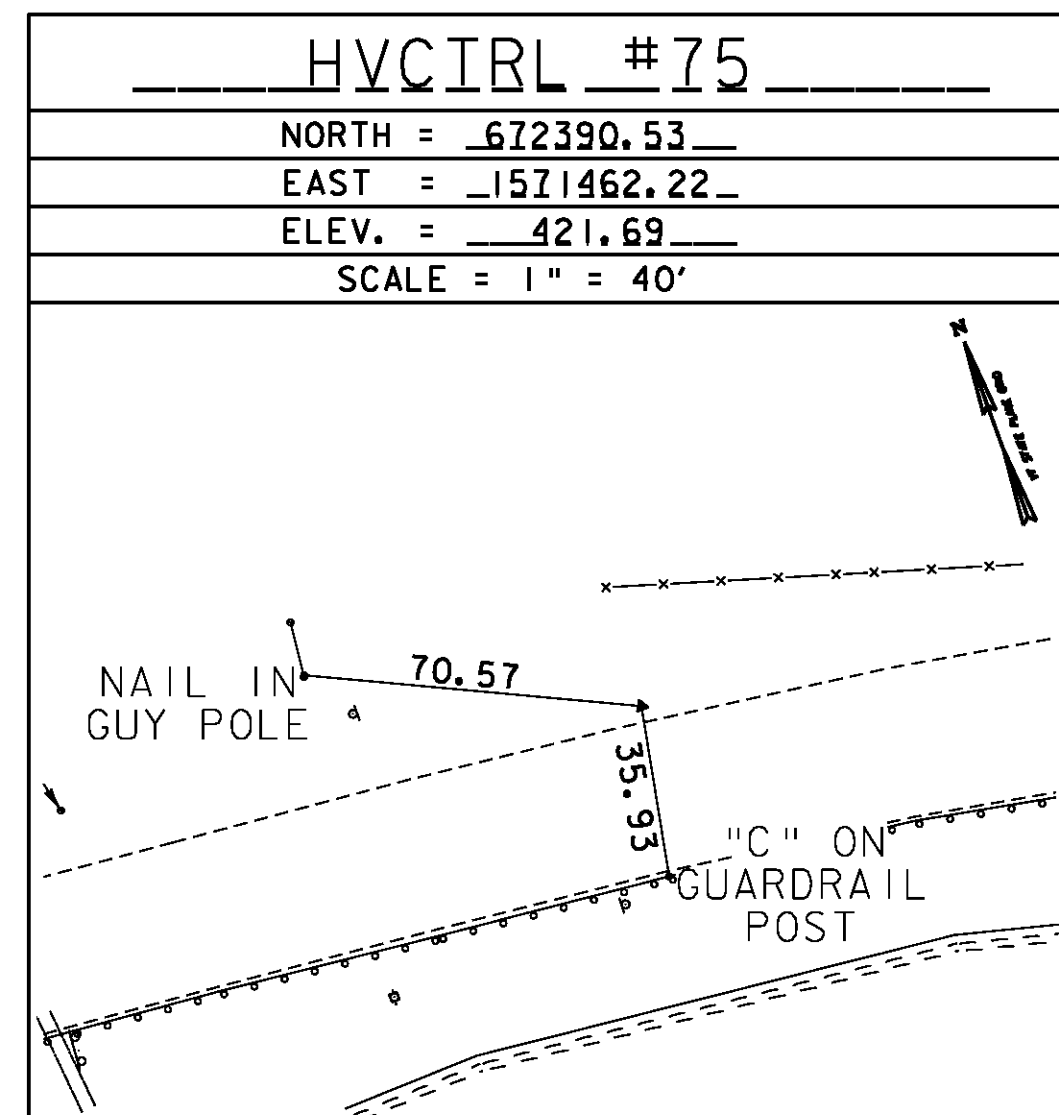
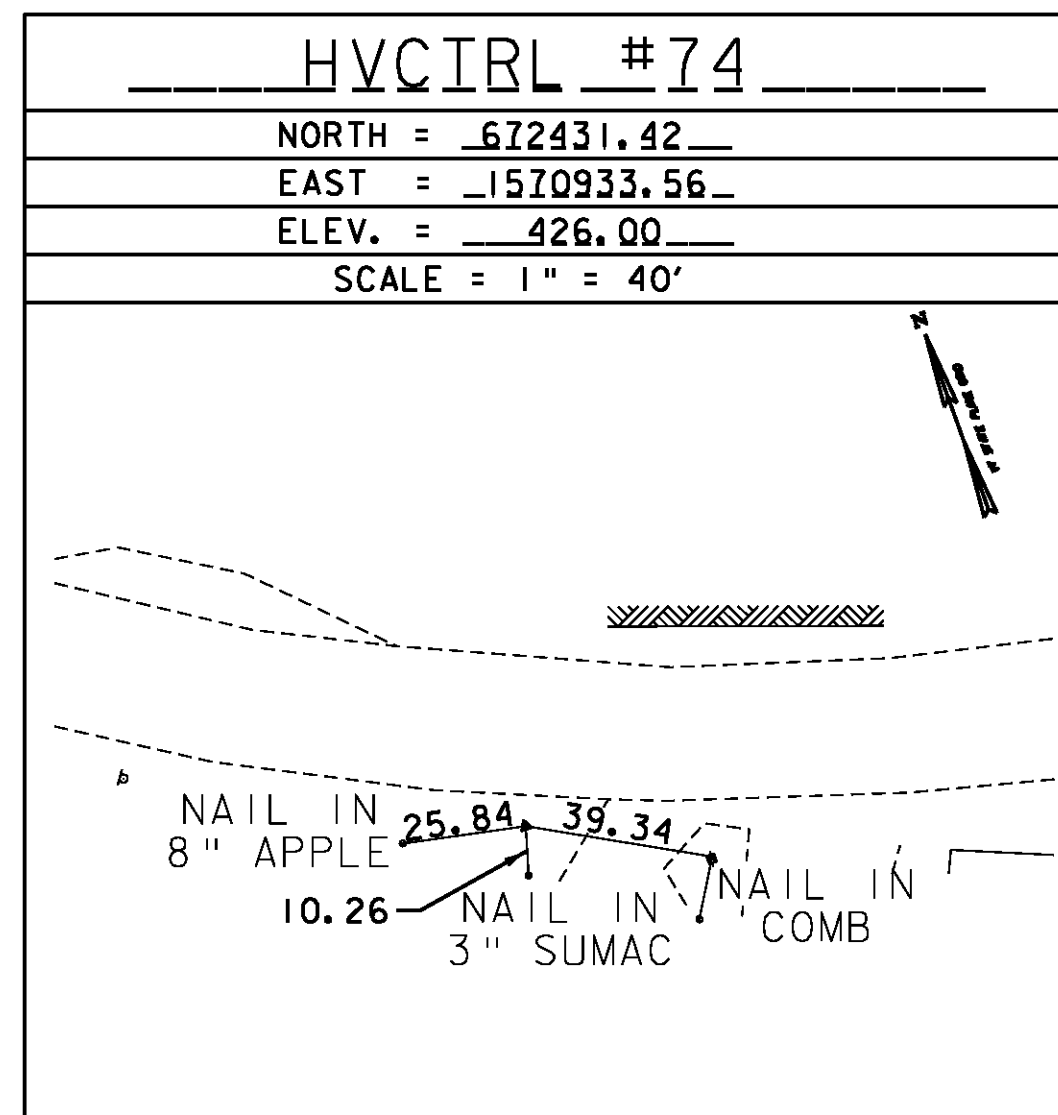
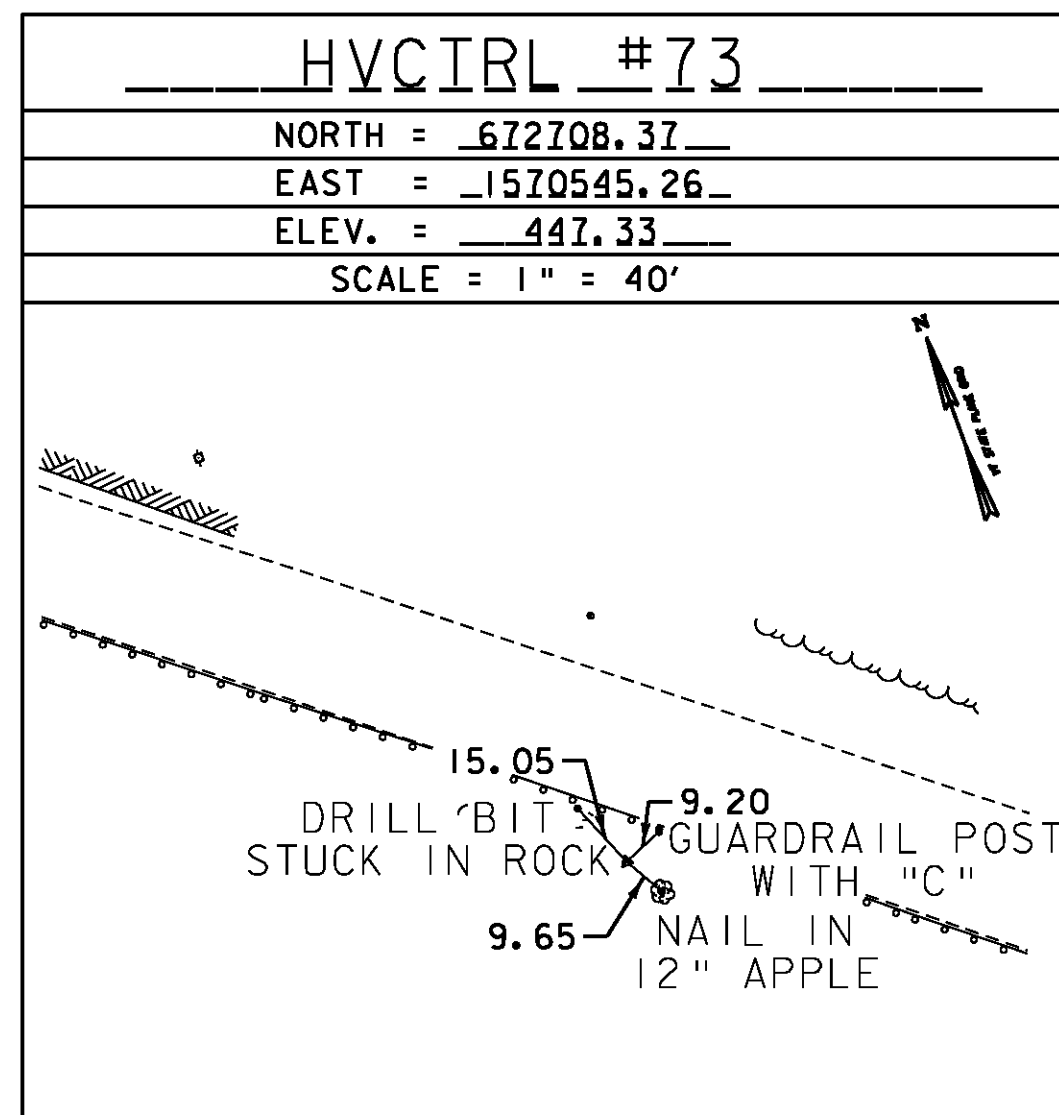
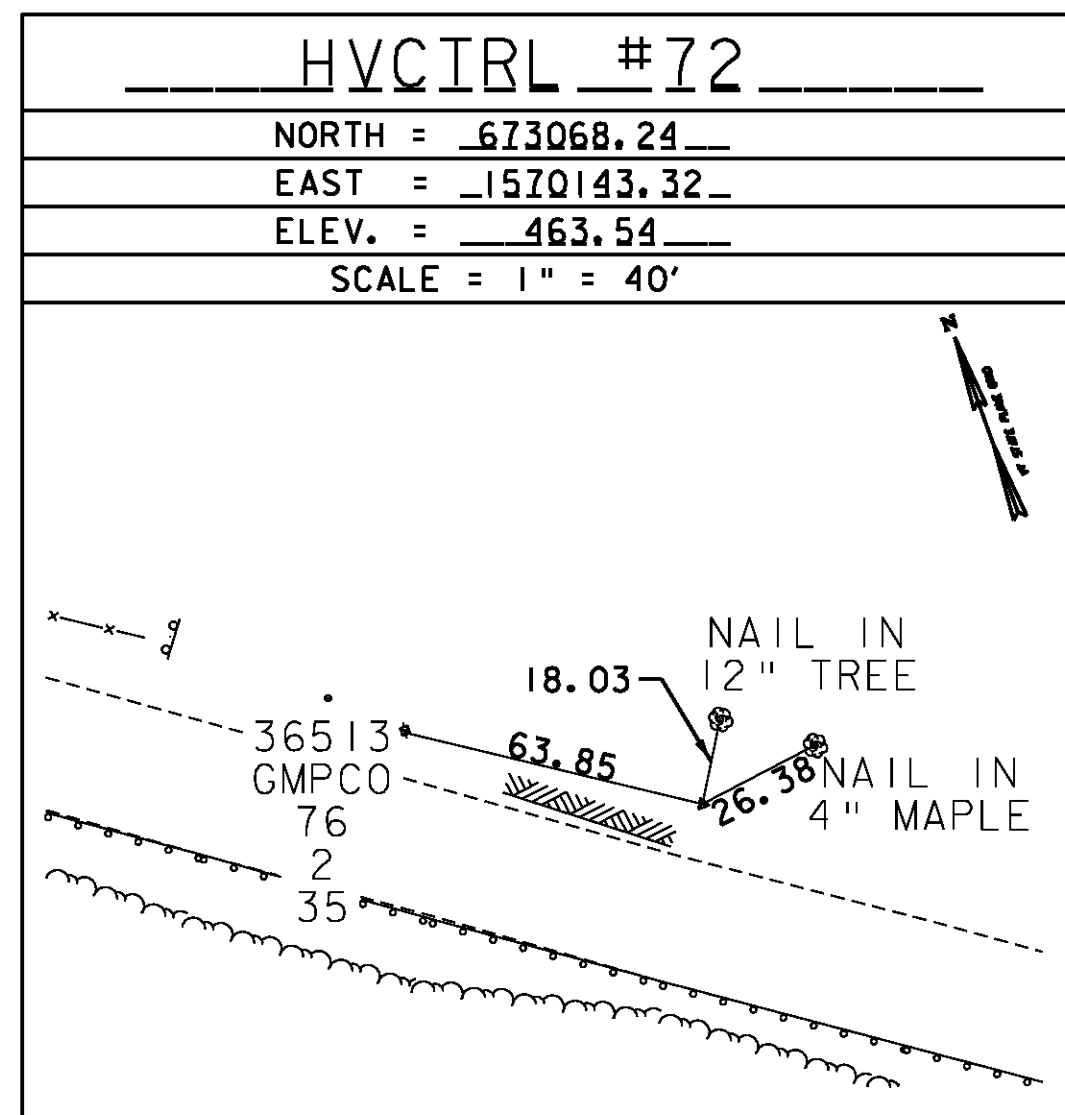
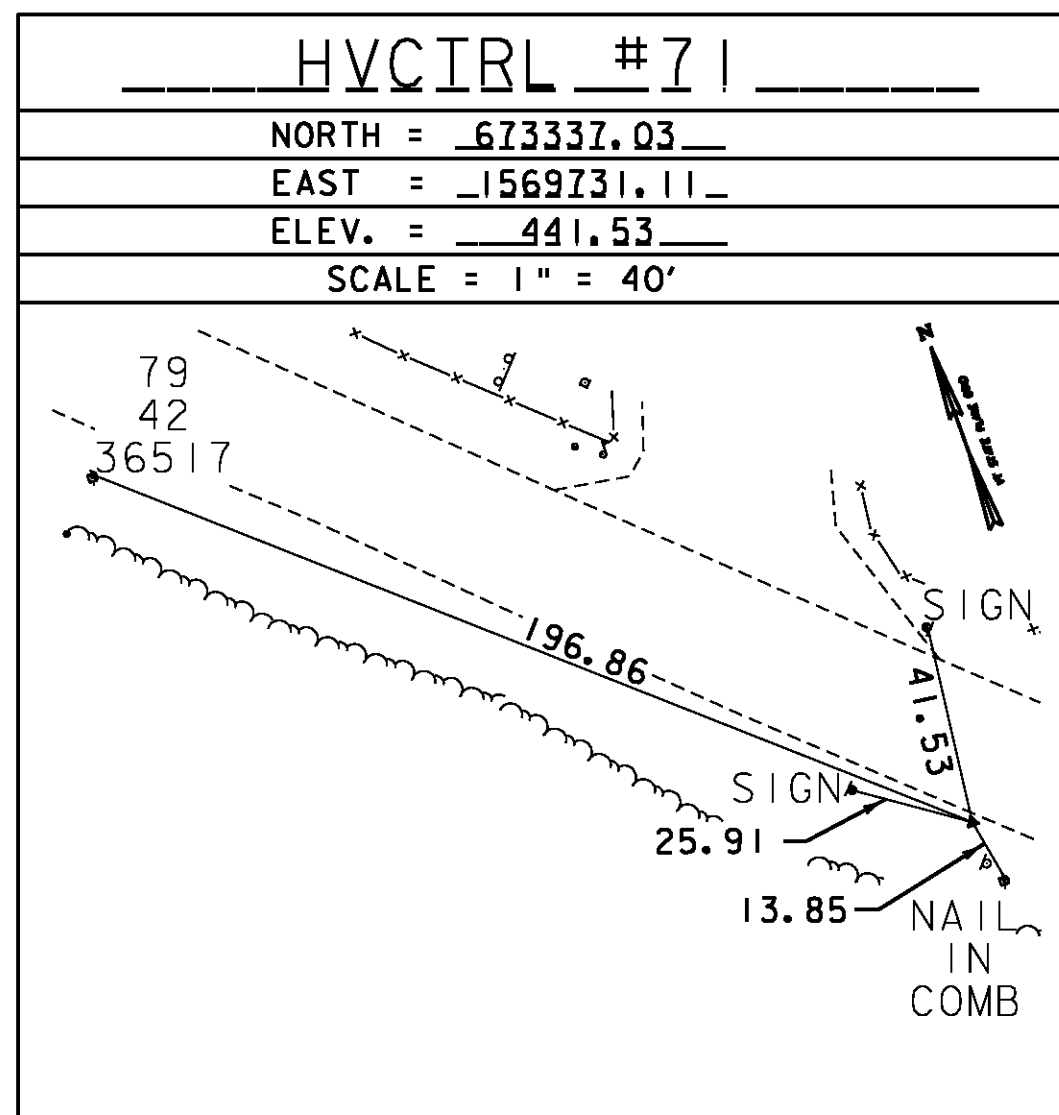
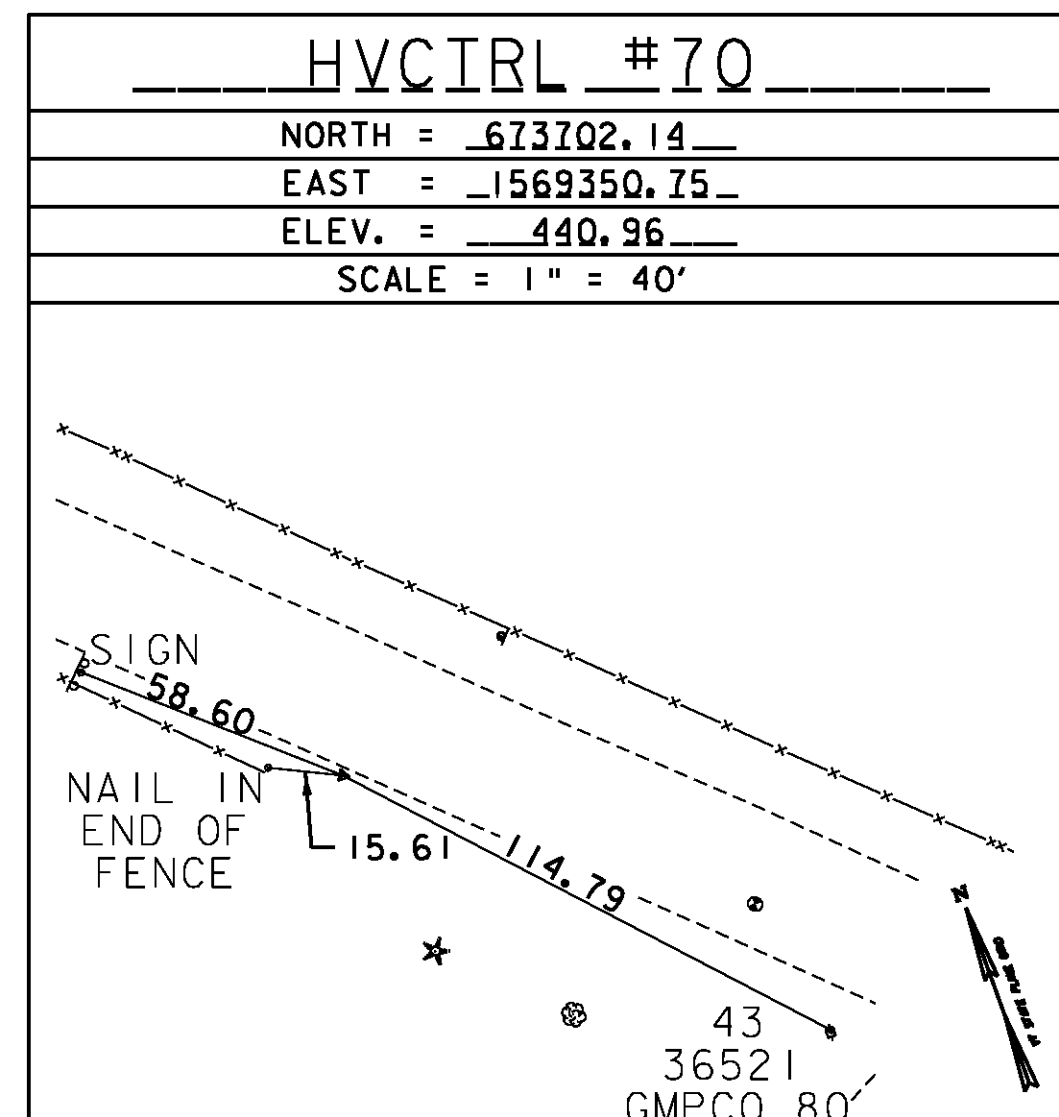
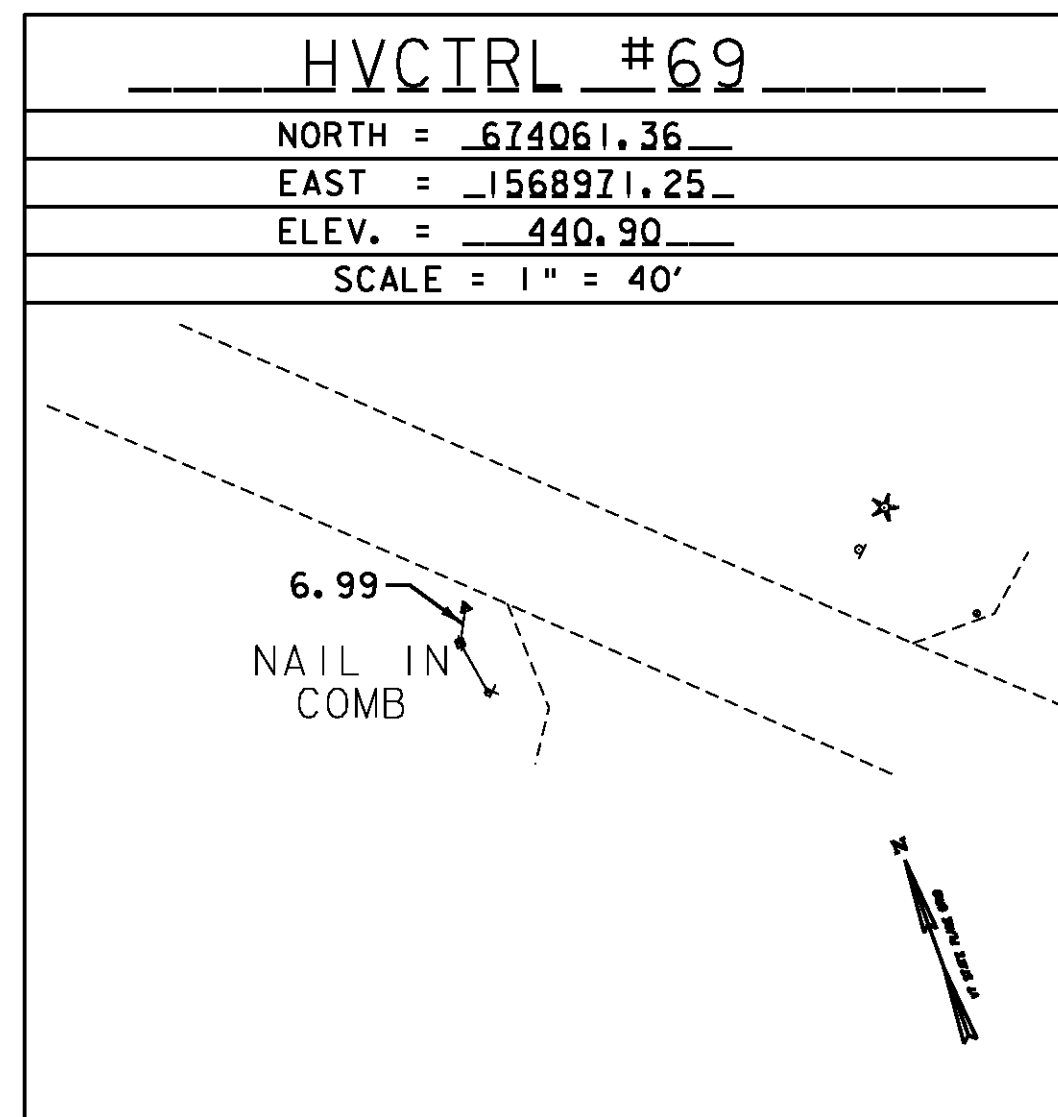
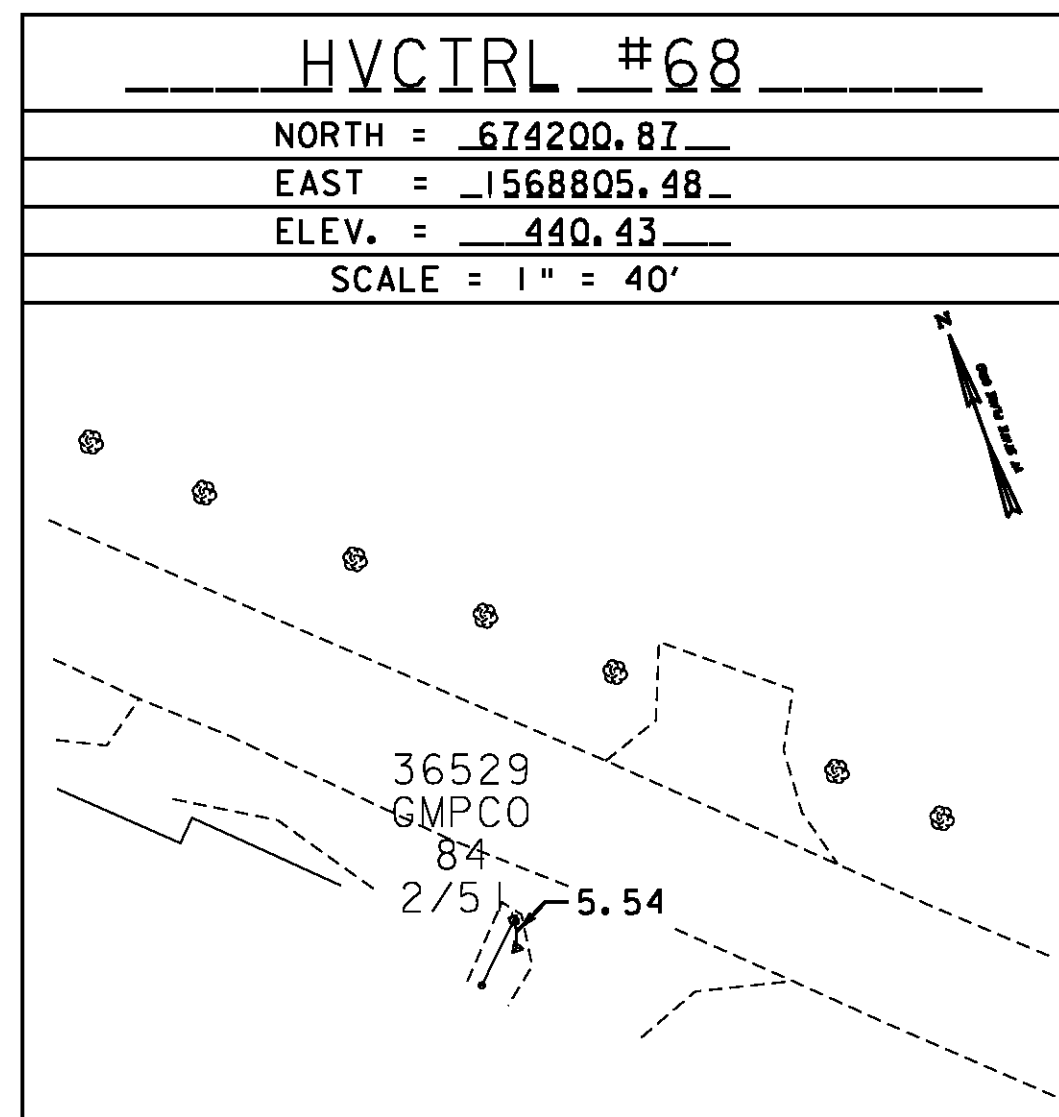
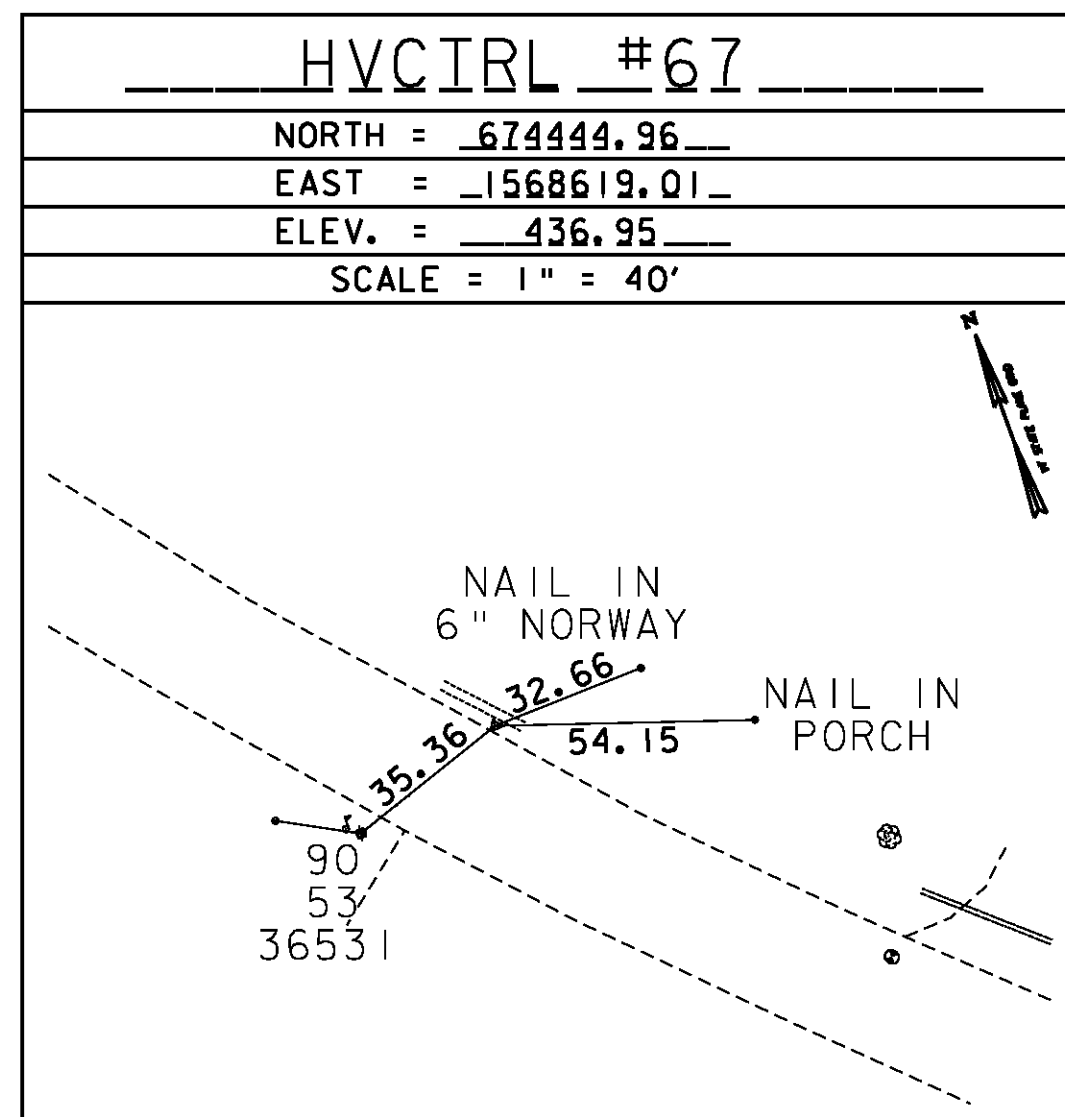
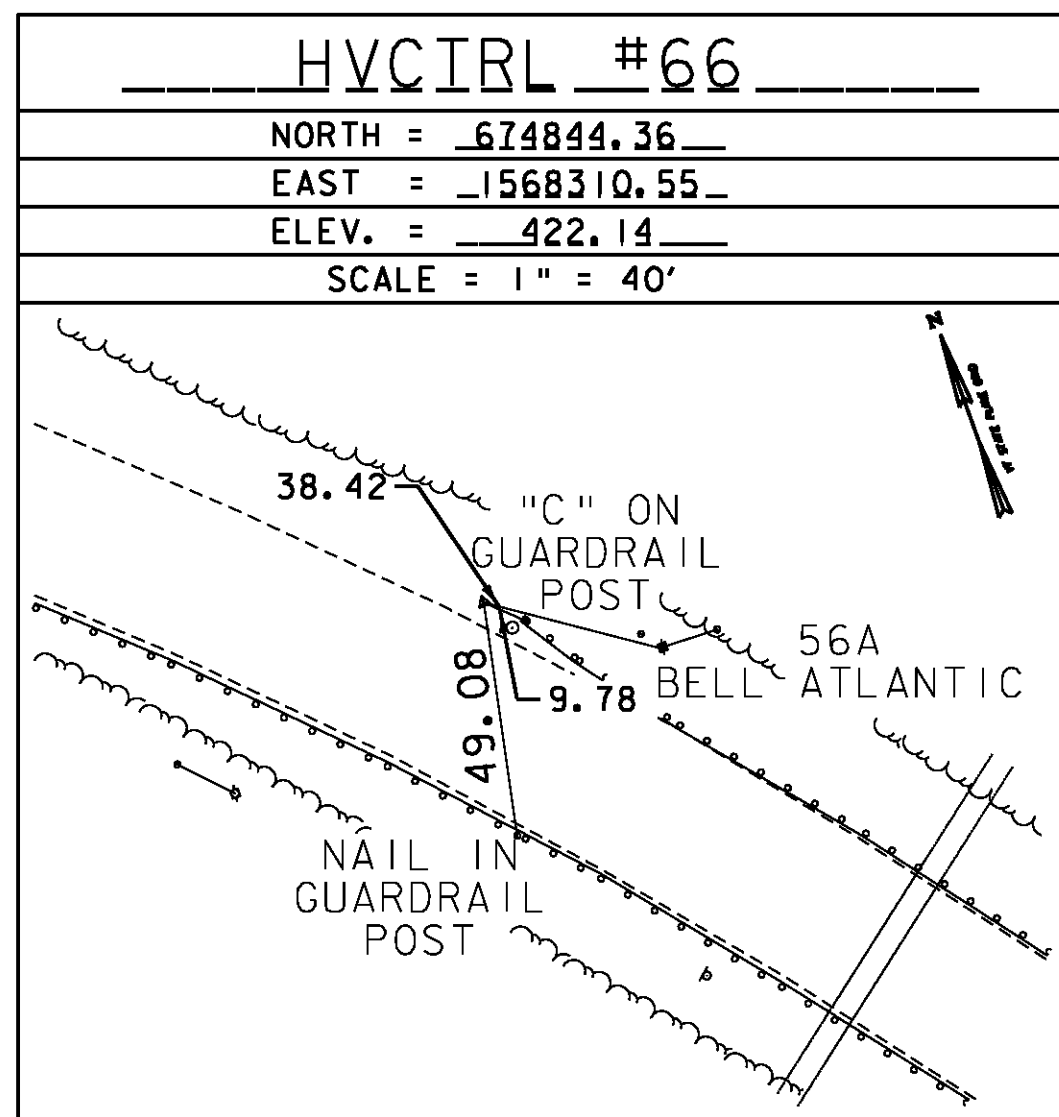
HVCIRL #66
 NORTH = 674844.36
 EAST = -1568310.55
 ELEV. = 422.14

GENERAL LOCATION, WATERBURY, VT.
 POINT IS SET OFF THE RIGHT SIDE OF THE WESTBOUND LANE OF U.S. ROUTE 2.
 IT IS APPROXIMATELY 125 FT WEST OF THE WESTBOUND BRIDGE MARKER FOR BRIDGE 45.
 IT IS 38.42 FT WEST-NORTHWEST OF COMBO POLE 56A / BELL ATLANTIC.
 IT IS 9.78 FT WEST-NORTHWEST OF A "C" ON A GUARDRAIL POST.
 IT IS 49.08 FT NORTH OF A NAIL IN A GUARDRAIL POST.
 POINT IS #5 REBAR, DRIVEN INTO THE GROUND.

HVCIRL #67

HVCIRL #67
 NORTH = 674444.96
 EAST = -1568619.01
 ELEV. = 436.95

GENERAL LOCATION, WATERBURY, VT.
 POINT IS SET OFF THE RIGHT SIDE OF THE WESTBOUND LANE OF U.S. ROUTE 2.
 IT IS APPROXIMATELY 50 FT WEST OF THE WESTBOUND MILE MARKER 0020 / 1218 / 0280.
 IT IS 32.66 FT WEST OF A NAIL IN A 6" NORWAY SPRUCE TREE.
 IT IS 54.15 FT WEST-NORTHWEST OF A NAIL IN A PORCH.
 IT IS 35.36 FT NORTHEAST OF COMBO POLE 90 / 53 / 36531.
 POINT IS #5 REBAR, DRIVEN INTO THE GROUND.



DATUM
 VERTICAL NAVD 88
 HORIZONTAL NAD 83

TIE SHEET 6

PROJECT NAME: BOLTON - WATERBURY
 PROJECT NUMBER: STP 2709 (1)

FILE NAME: p07C172.dgn
 PROJECT LEADER: CDL
 DESIGNED BY: BMB
 PLOT FILE: p07C172-7A.i

PLOT DATE: 4/16/2013
 DRAWN BY: JBG
 CHECKED BY: CDL
 SHEET 7A OF 217