

HVCIRL #1

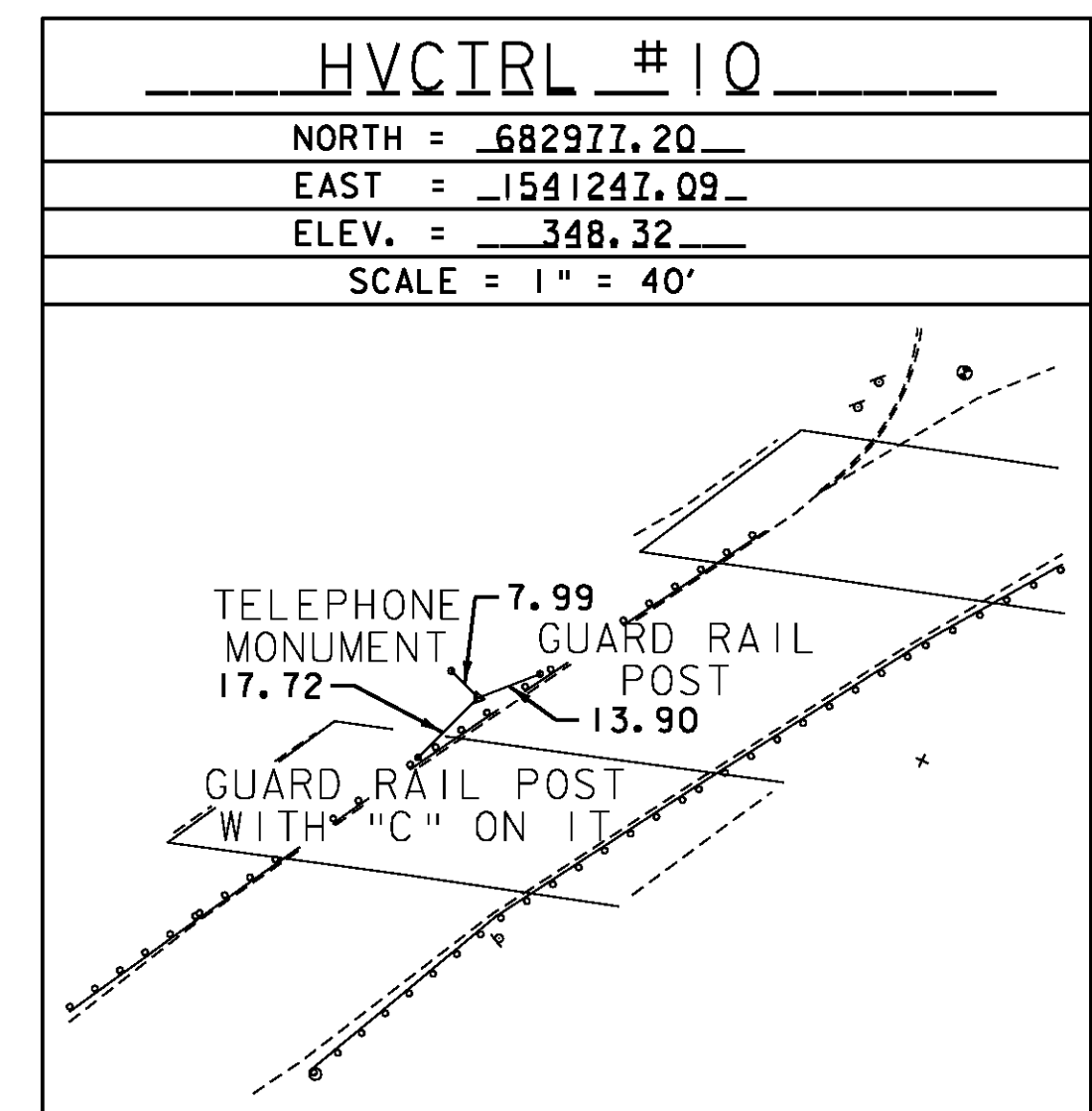
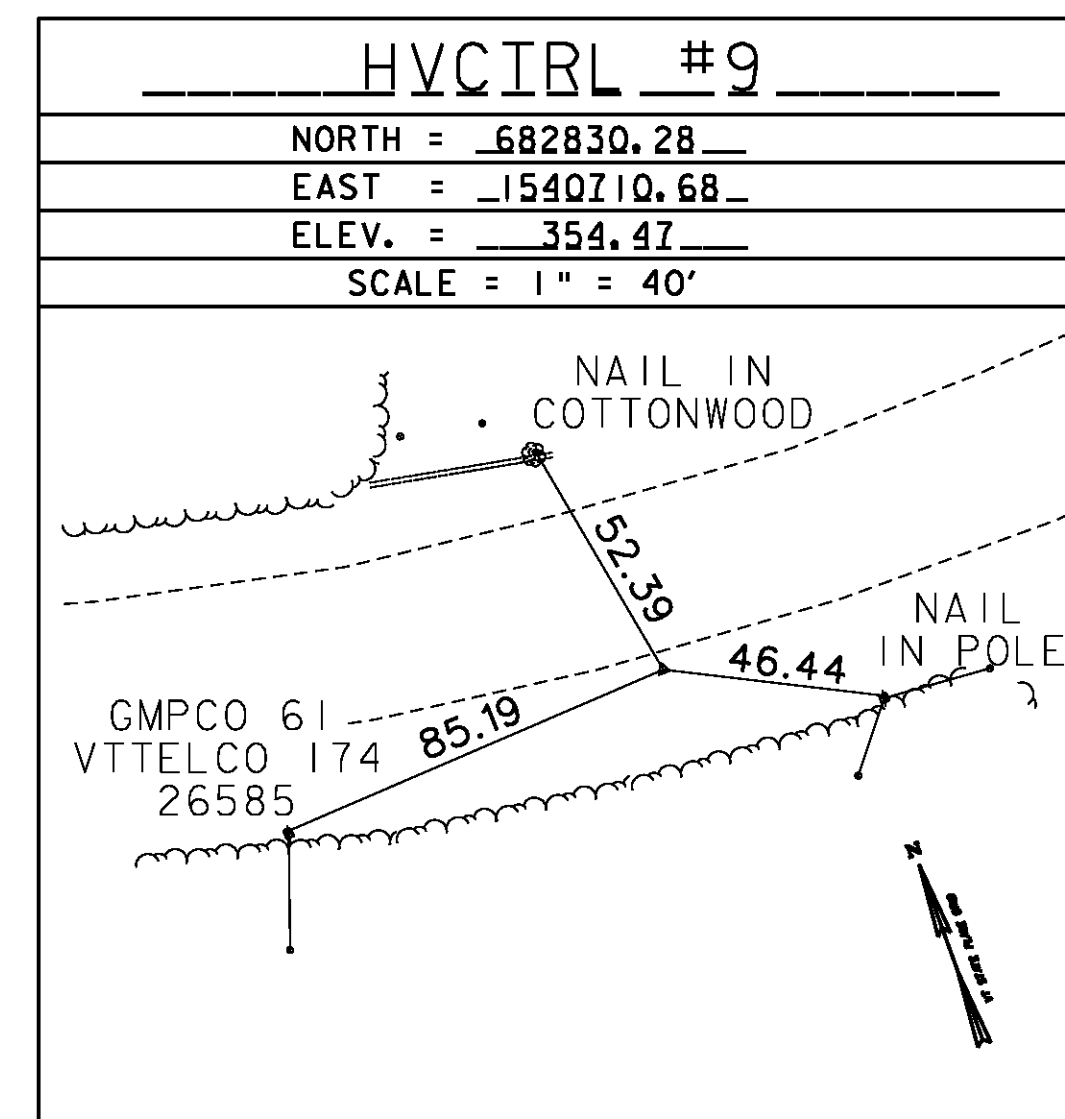
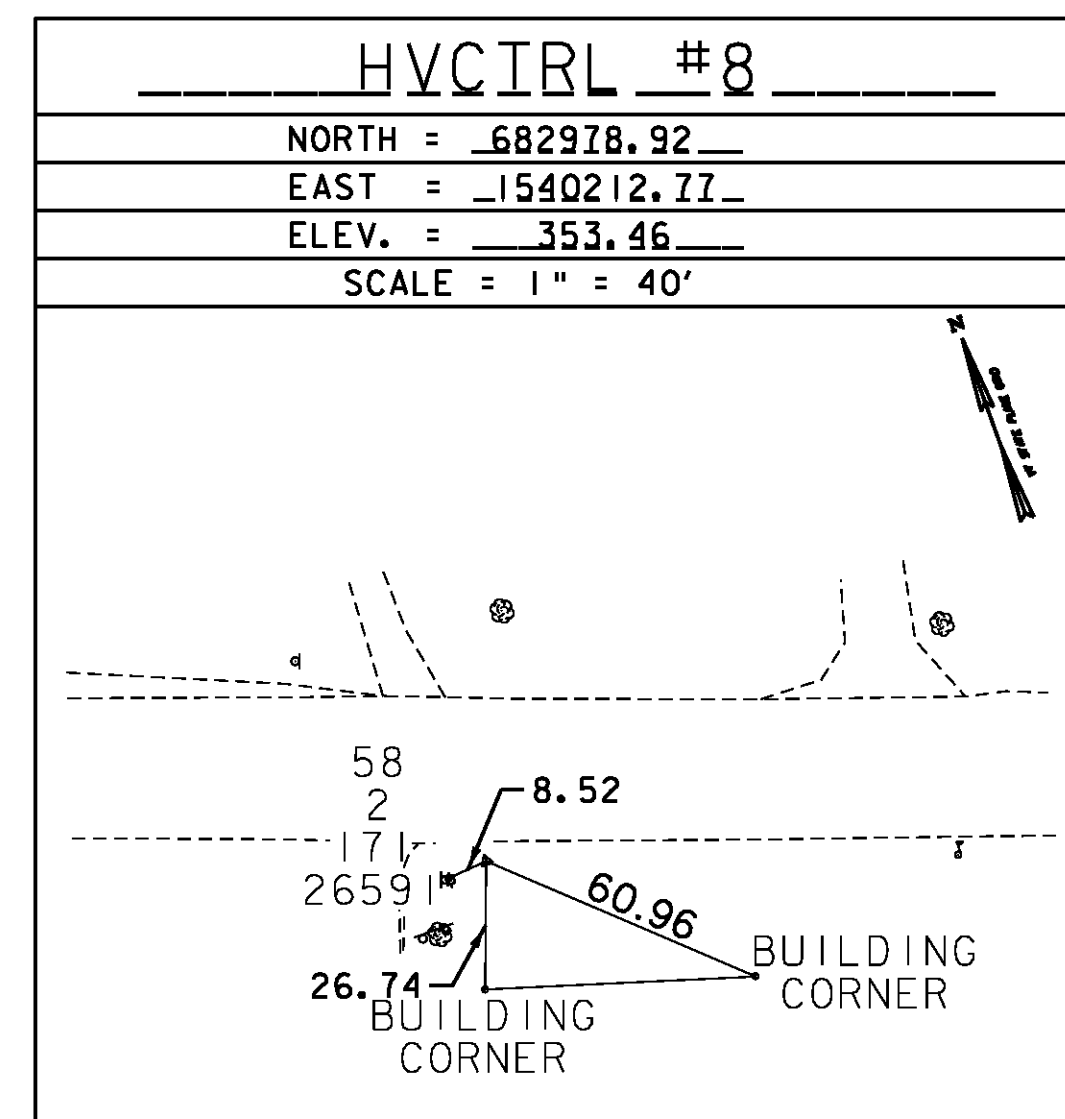
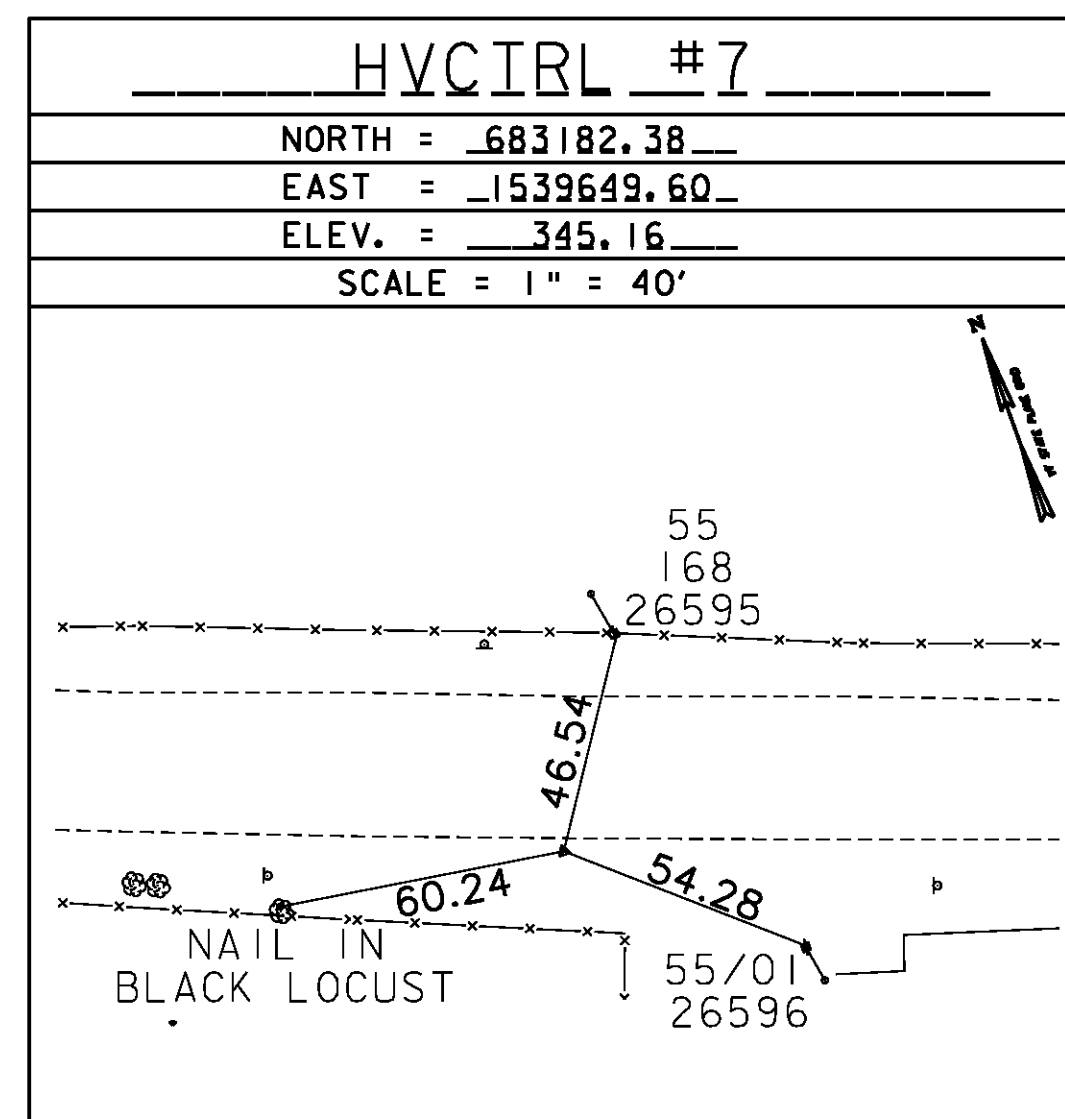
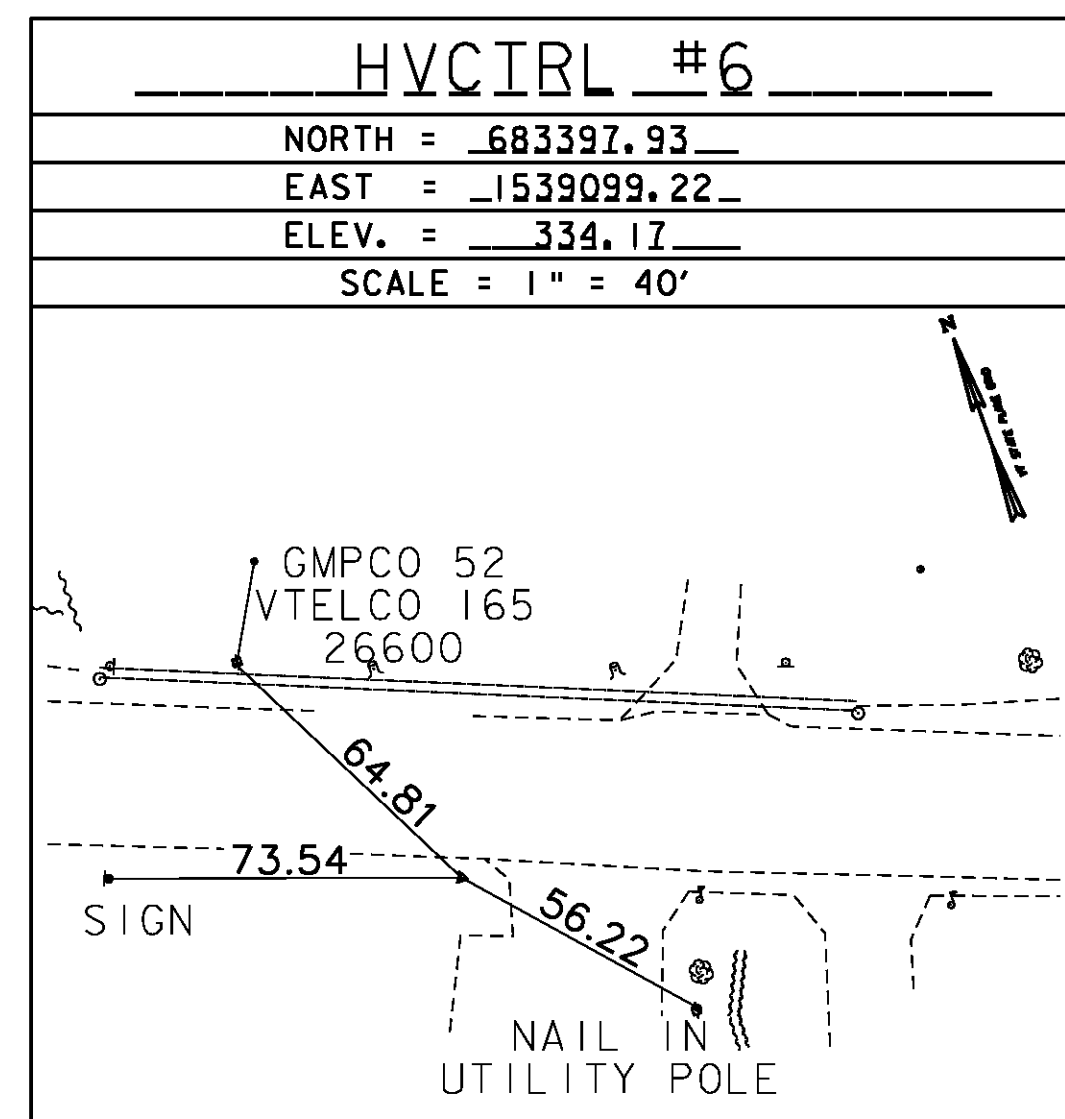
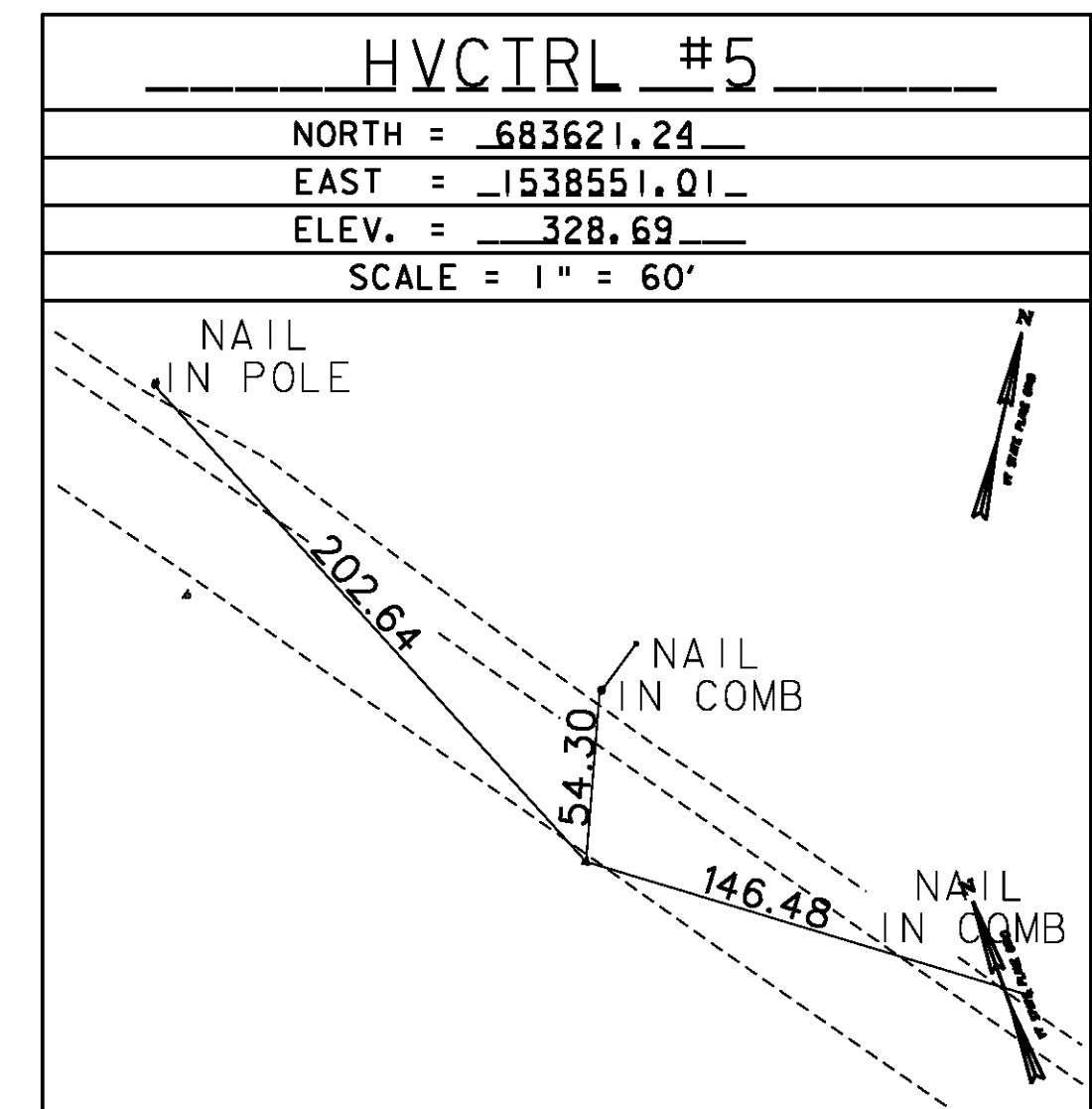
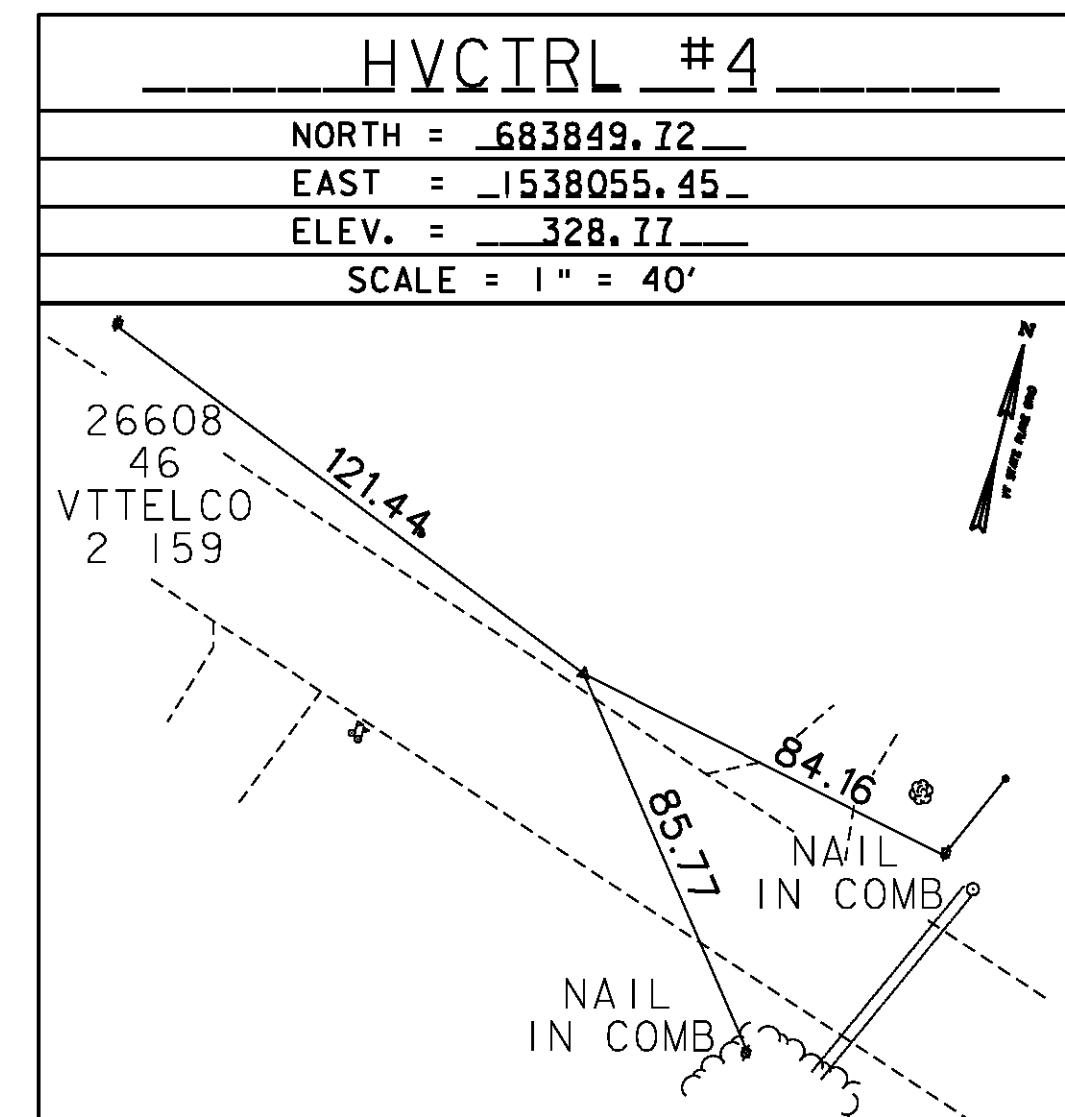
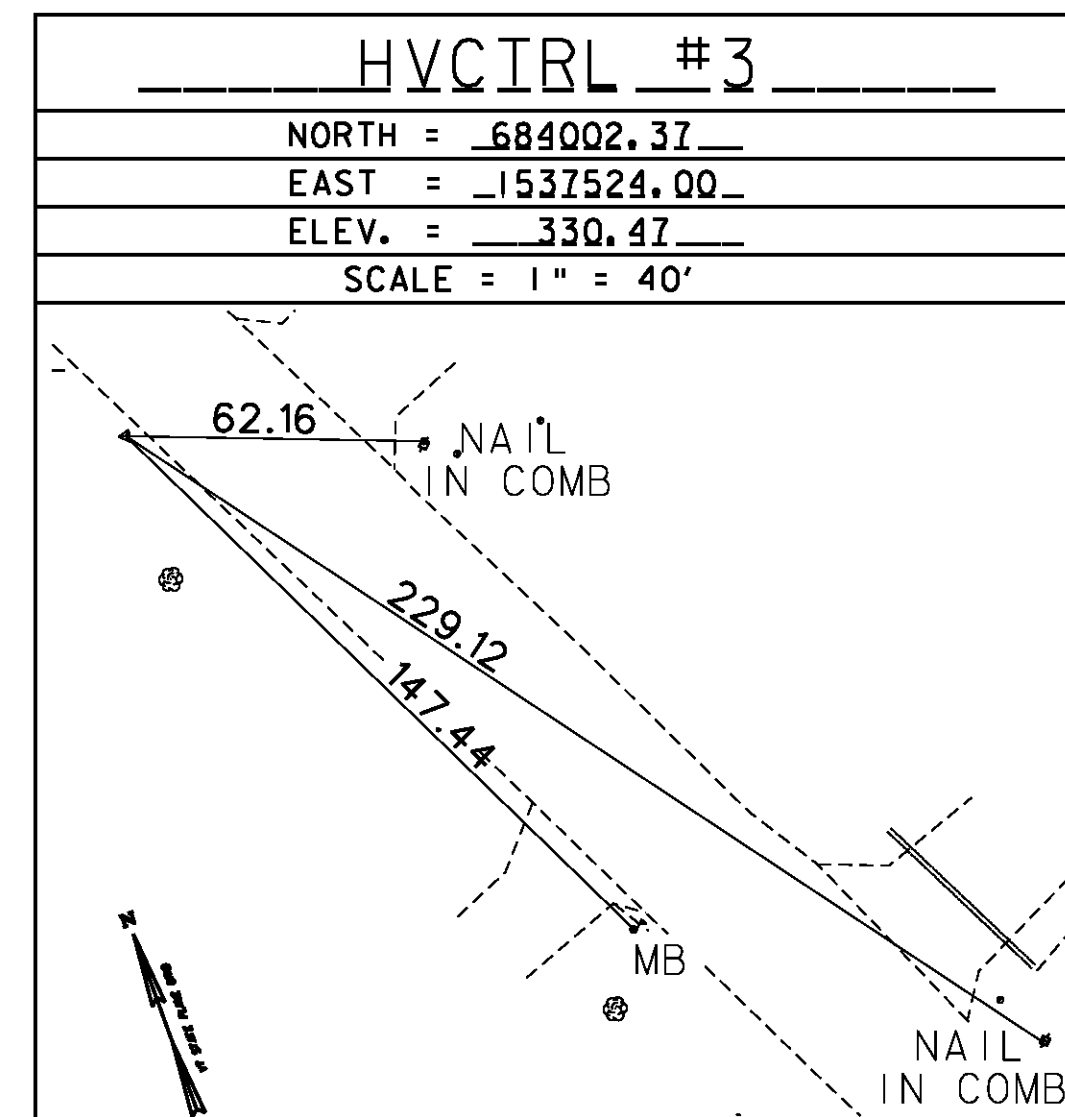
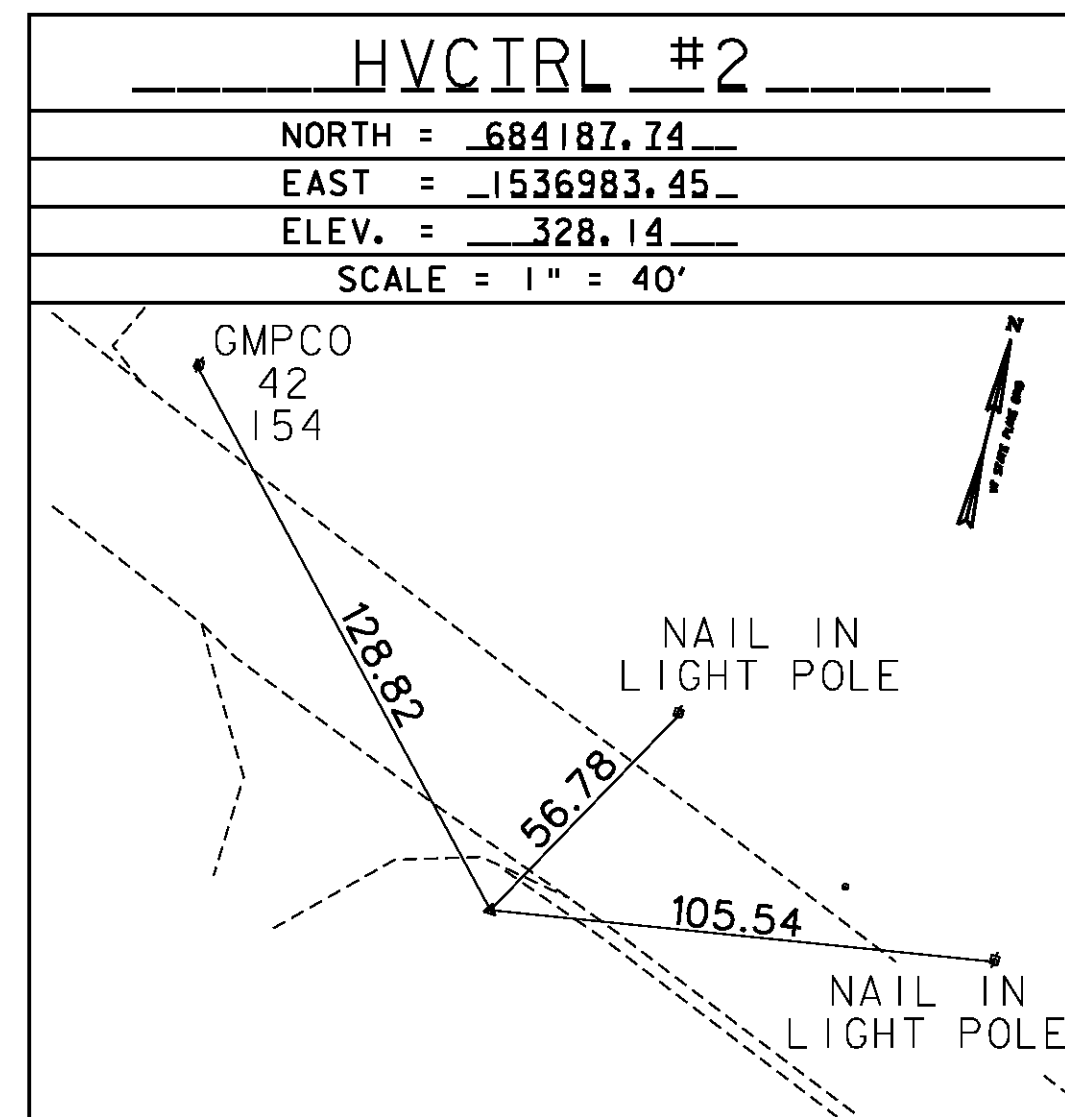
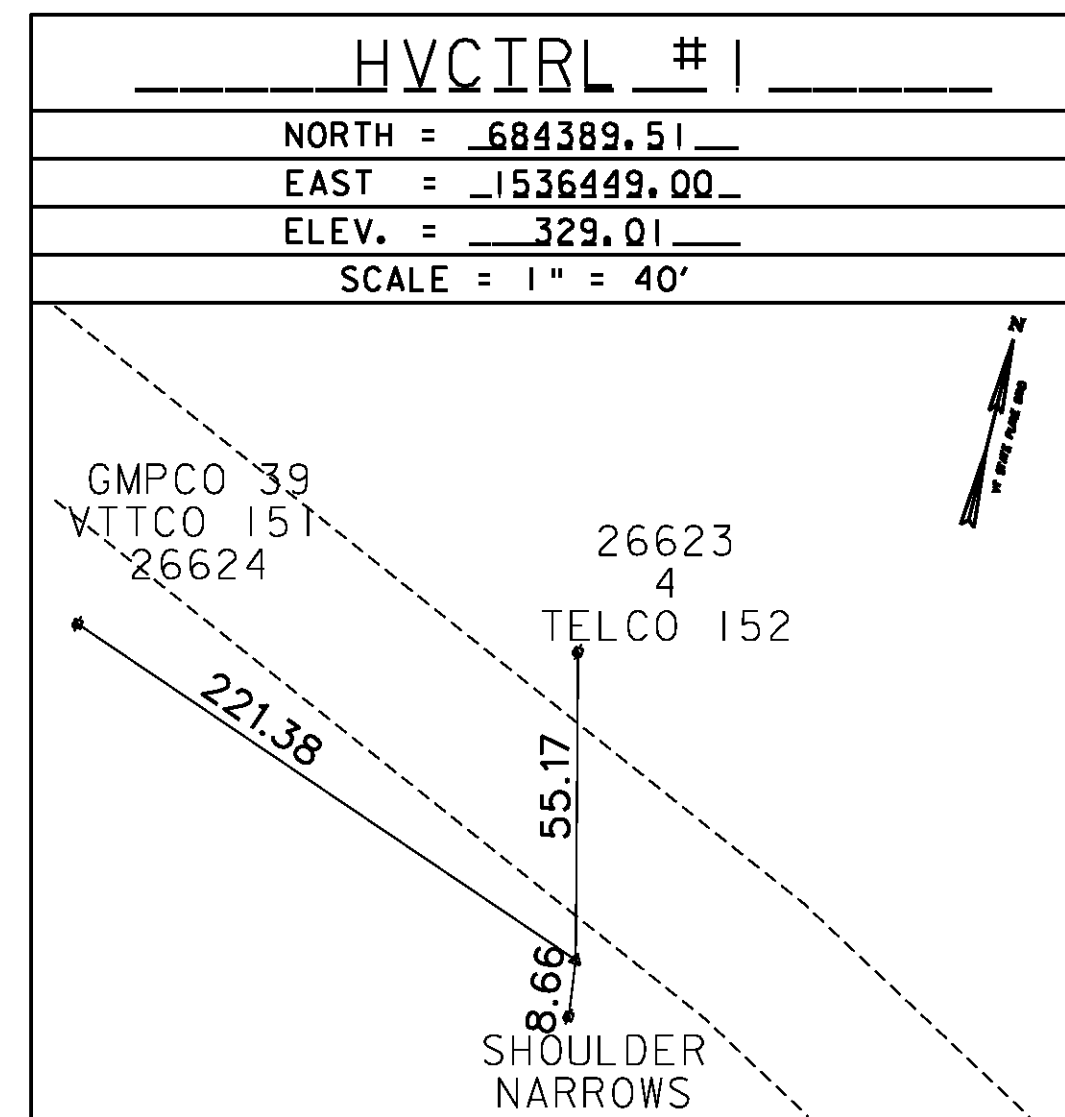
HVCIRL #1
 NORTH = 684389.51
 EAST = 1536449.00
 ELEV. = 329.01

GENERAL LOCATION, BOLTON, VT.
 POINT IS SET OFF THE RIGHT SIDE OF THE EASTBOUND LANE OF U.S. ROUTE 2.
 IT IS APPROXIMATELY 275 FT EAST OF THE WESTBOUND MILE MARKER 0020 / 0401 / 0180.
 IT IS 8.66 FT NORTH-NORTHWEST OF A TRAFFIC SIGN THAT READS "SHOULDER NARROWS."
 IT IS 55.17 FT SOUTH-SOUTHEAST OF COMBO POLE 26623 / 4 / TELCO 152.
 IT IS 221.38 FT EAST OF COMBO POLE GMPCO 39 / VTTTCO 151 / 26624.
 POINT IS #5 REBAR, DRIVEN INTO THE GROUND.

HVCIRL #2

HVCIRL #2
 NORTH = 684187.74
 EAST = 1536983.45
 ELEV. = 328.14

GENERAL LOCATION, BOLTON, VT.
 POINT IS SET OFF THE RIGHT SIDE OF THE EASTBOUND LANE OF U.S. ROUTE 2.
 IT IS APPROXIMATELY 150 FT WEST OF THE EASTBOUND MILE MARKER 0020 / 0401 / 0200.
 IT IS APPROXIMATELY 18 FT EAST OF A GRAVEL DRIVE.
 IT IS 128.82 FT SOUTHEAST OF COMBO POLE GMPCO / 42 / 154.
 IT IS 56.78 FT SOUTH-SOUTHWEST OF A NAIL IN A LIGHT POLE.
 IT IS 105.54 FT WEST-SOUTHWEST OF A NAIL IN A LIGHT POLE.
 POINT IS #5 REBAR, DRIVEN INTO THE GROUND.



DATUM
 VERTICAL NAVD 88
 HORIZONTAL NAD 83

TIE SHEET 1

PROJECT NAME: BOLTON - WATERBURY
 PROJECT NUMBER: STP 2709 (1)

FILE NAME: p07C172.dgn
 PROJECT LEADER: CDL
 DESIGNED BY: BMB
 PLOT FILE: p07C172-3.i

PLOT DATE: 4/16/2013
 DRAWN BY: JBG
 CHECKED BY: CDL
 SHEET 3 OF 217