

646.402 DURABLE 4 INCH WHITE LINE, THERMOPLASTIC OR
 646.403 DURABLE 4 INCH WHITE LINE, EXPOXY PAINT OR
 646.404 DURABLE 4 INCH WHITE LINE, POLYUREA
 (ALL LINES WILL INCLUDE EDGE LINE BREAKS AND
 RADIUS FOR TOWN HIGHWAYS)
 CASTLETON:
 STA 112+50.00 - STA 118+00.00 EDGE LINE LT & RT
 STA 112+50.00 - STA 114+75.00 SOLID LANE LINE RT

646.602 TEMPORARY 4 INCH WHITE LINE, PAINT
 (ALL LINES WILL INCLUDE EDGE LINE BREAKS AND
 RADIUS FOR TOWN HIGHWAYS)
 CASTLETON:
 STA 112+50.00 - STA 114+75.00 SOLID LANE LINE RT
 STA 115+26.24 RAMP Q EDGE LINE RT
 STA 116+21.28 RAMP R EDGE LINE LT
 STA 116+21.28 RAMP R MEDIAN EDGE LINE LT

646.622 TEMPORARY 6 INCH YELLOW LINE, PAINT
 (ALL LINES WILL INCLUDE C/L BREAKS FOR
 TOWN HIGHWAYS) S=SOLID, D=DASHED
 CASTLETON:
 STA 115+26.24 RAMP Q EDGE LINE RT
 STA 116+21.28 RAMP R EDGE LINE LT
 STA 116+21.28 RAMP R MEDIAN EDGE LINE LT

646.624 DURABLE 12 INCH WHITE LINE, THERMOPLASTIC OR
 646.625 DURABLE 12 INCH WHITE LINE, EXPOXY PAINT OR
 646.626 DURABLE 12 INCH WHITE LINE, POLYUREA
 CASTLETON:
 STA 115+00.00 - STA 116+68.00 GORE AREA LT
 STA 115+35.00 - STA 116+08.00 HATCHED AREA RT
 STA 116+21.28 RAMP R GORE AREA LT

646.492 DURABLE LETTER OR SYMBOL, THERMOPLASTIC OR
 646.493 DURABLE LETTER OR SYMBOL, EXPOXY PAINT
 CASTLETON:
 STA 112+90.00 RT ARROW (1EA)
 STA 113+65.38 RT "O,N,L,Y" (4 EA)
 STA 114+40.75 RT ARROW (1EA)
 STA 115+26.24 RT, RAMP Q, "S,T,O,P" (4 EA)
 STA 115+26.24 RT, RAMP Q, "S,T,O,P" (4 EA)

646.412 DURABLE 4 INCH YELLOW LINE, THERMOPLASTIC OR
 646.413 DURABLE 4 INCH YELLOW LINE, EXPOXY PAINT OR
 646.414 DURABLE 4 INCH YELLOW LINE, POLYUREA
 (ALL LINES WILL INCLUDE C/L BREAKS FOR
 TOWN HIGHWAYS) S=SOLID, D=DASHED
 CASTLETON:
 STA 112+50.00 - STA 114+45.00 MEDIAN EDGE LINE LT
 STA 115+55.00 - STA 118+00.00 MEDIAN EDGE LINE LT & RT

646.612 TEMPORARY 4 INCH YELLOW LINE, PAINT
 (ALL LINES WILL INCLUDE C/L BREAKS FOR
 TOWN HIGHWAYS) S=SOLID, D=DASHED
 CASTLETON:
 STA 112+50.00 - STA 114+45.00 MEDIAN EDGE LINE LT
 STA 115+55.00 - STA 118+00.00 MEDIAN EDGE LINE LT & RT
 STA 115+26.24 RAMP Q EDGE LINE RT
 STA 116+21.28 RAMP R EDGE LINE LT
 STA 116+21.28 RAMP R MEDIAN EDGE LINE LT

646.632 TEMPORARY 6 INCH YELLOW LINE, PAINT
 (ALL LINES WILL INCLUDE C/L BREAKS FOR
 TOWN HIGHWAYS) S=SOLID, D=DASHED
 CASTLETON:
 STA 115+26.24 RAMP Q EDGE LINE RT
 STA 116+21.28 RAMP R EDGE LINE LT
 STA 116+21.28 RAMP R MEDIAN EDGE LINE LT

646.482 DURABLE 24 INCH STOP BAR, THERMOPLASTIC OR
 646.483 DURABLE 24 INCH STOP BAR, EXPOXY PAINT OR
 646.484 DURABLE 24 INCH STOP BAR, POLYUREA
 CASTLETON:
 STA 115+26.24 RT, RAMP Q
 STA 115+26.24 RT, RAMP Q
 STA 115+26.24 RT, RAMP Q
 STA 116+26.24 RT, RAMP Q

646.692 TEMPORARY LETTER OR SYMBOL, PAINT
 CASTLETON:
 STA 112+90.00 RT ARROW (2 EA)
 STA 114+40.75 RT ARROW (2 EA)
 STA 115+26.24 RT, RAMP Q, "S,T,O,P" (8 EA)
 STA 115+26.24 RT, RAMP Q, "S,T,O,P" (8 EA)

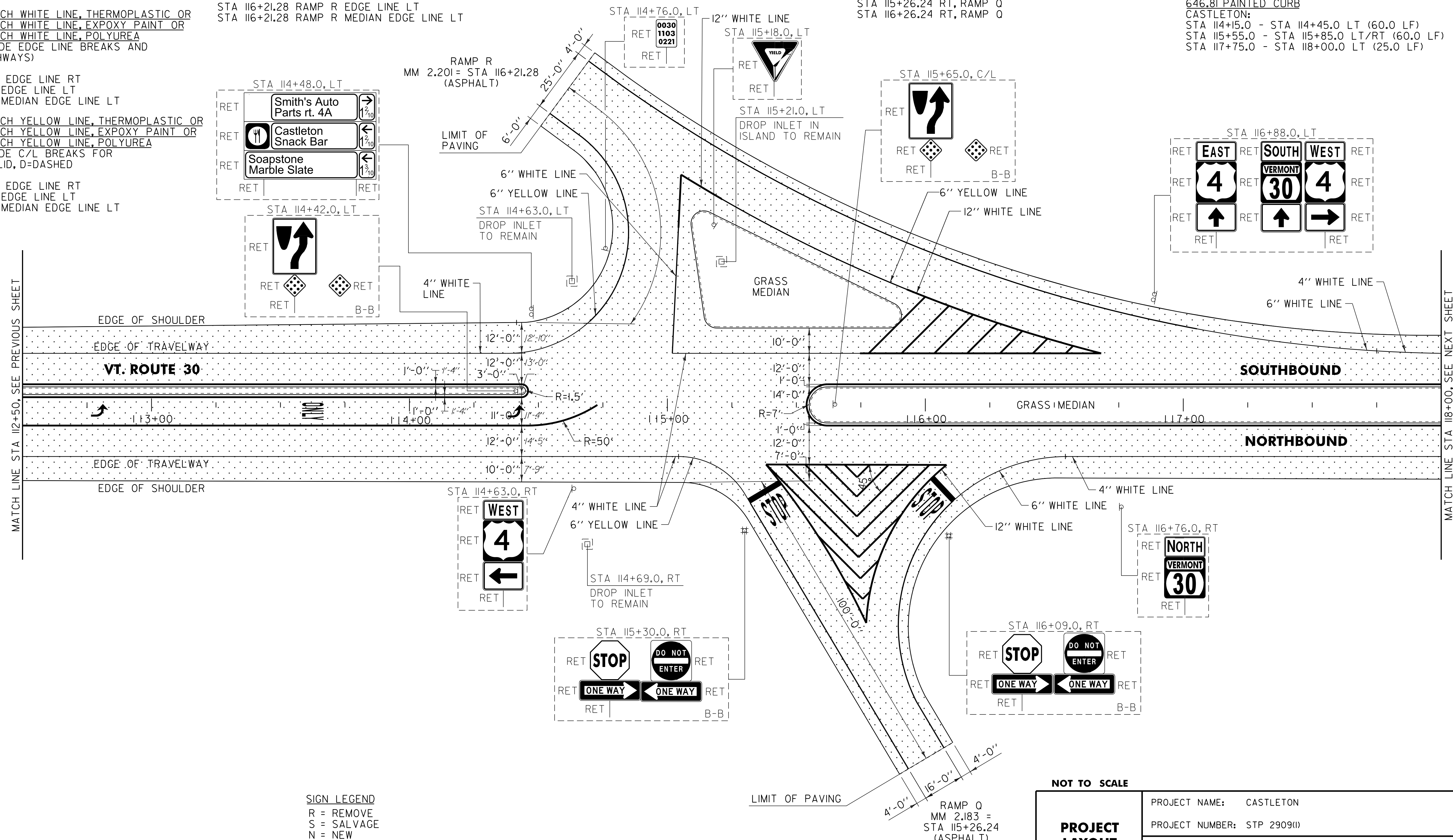
646.432 DURABLE 6 INCH YELLOW LINE, THERMOPLASTIC OR
 646.433 DURABLE 6 INCH YELLOW LINE, EXPOXY PAINT OR
 646.434 DURABLE 6 INCH YELLOW LINE, POLYUREA
 (ALL LINES WILL INCLUDE C/L BREAKS FOR
 TOWN HIGHWAYS) S=SOLID, D=DASHED
 CASTLETON:
 STA 115+26.24 RAMP Q EDGE LINE RT
 STA 116+21.28 RAMP R EDGE LINE LT
 STA 116+21.28 RAMP R MEDIAN EDGE LINE LT

646.632 TEMPORARY 6 INCH YELLOW LINE, PAINT
 (ALL LINES WILL INCLUDE C/L BREAKS FOR
 TOWN HIGHWAYS) S=SOLID, D=DASHED
 CASTLETON:
 STA 115+26.24 RAMP Q EDGE LINE RT
 STA 116+21.28 RAMP R EDGE LINE LT
 STA 116+21.28 RAMP R MEDIAN EDGE LINE LT

646.624 DURABLE 12 INCH WHITE LINE, THERMOPLASTIC OR
 646.625 DURABLE 12 INCH WHITE LINE, EXPOXY PAINT OR
 646.626 DURABLE 12 INCH WHITE LINE, POLYUREA
 CASTLETON:
 STA 115+00.00 - STA 116+68.00 GORE AREA LT
 STA 115+35.00 - STA 116+08.00 HATCHED AREA RT
 STA 116+21.28 RAMP R GORE AREA LT

646.482 DURABLE 24 INCH STOP BAR, THERMOPLASTIC OR
 646.483 DURABLE 24 INCH STOP BAR, EXPOXY PAINT OR
 646.484 DURABLE 24 INCH STOP BAR, POLYUREA
 CASTLETON:
 STA 115+26.24 RT, RAMP Q
 STA 115+26.24 RT, RAMP Q
 STA 115+26.24 RT, RAMP Q
 STA 116+26.24 RT, RAMP Q

646.692 TEMPORARY LETTER OR SYMBOL, PAINT
 CASTLETON:
 STA 112+90.00 RT ARROW (2 EA)
 STA 114+40.75 RT ARROW (2 EA)
 STA 115+26.24 RT, RAMP Q, "S,T,O,P" (8 EA)
 STA 115+26.24 RT, RAMP Q, "S,T,O,P" (8 EA)



AREA TO BE COLD PLANED

SIGN LEGEND
 R = REMOVE
 S = SALVAGE
 N = NEW
 RET = RETAIN
 B-B = BACK TO BACK
 EXISTING = - - - - -
 NEW = _____

NOT TO SCALE

PROJECT LAYOUT SHEET #7	PROJECT NAME: CASTLETON	PLOT DATE: 04-JUN-2013 09:3
	PROJECT NUMBER: STP 2909(1)	DRAWN BY: W.G.P.
	FILE NAME: p10c212.dgn	CHECKED BY: D.E.G.
	PROJECT LEADER: D.E.G.	SHEET 135 OF 152