

646.402 DURABLE 4 INCH WHITE LINE, THERMOPLASTIC OR
 646.403 DURABLE 4 INCH WHITE LINE, EPOXY PAINT OR
 646.404 DURABLE 4 INCH WHITE LINE, POLYUREA
 (ALL LINES WILL INCLUDE EDGE LINE BREAKS AND
 RADIUS FOR TOWN HIGHWAYS)
 CASTLETON:
 STA 176+75.00 - STA 177+57.00 EDGE LINE LT & RT
 STA 177+57.00 - STA 179+78.00 EDGE LINE LT
 STA 177+57.00 - STA 178+10.00 PARKINGS STALLS RT
 STA 178+49.00 - STA 178+59.00 RT, NO PARKING HATCHING
 STA 178+59.00 - STA 178+83.00 PARKING STALLS RT
 STA 178+83.00 - STA 179+09.00 RT, NO PARKING HATCHING
 STA 179+49.00 - STA 179+69.00 RT, NO PARKING HATCHING
 STA 179+69.00 - STA 180+12.00 PARKING STALLS RT
 STA 179+78.00 - STA 179+96.00 LT, NO PARKING HATCHING
 STA 179+96.00 - STA 180+64.00 PARKING STALLS LT
 STA 180+55.00 - STA 180+84.00 PARKING STALLS RT
 STA 180+64.00 - STA 180+55.00 RT, NO PARKING HATCHING
 STA 180+64.00 - STA 180+74.00 LT, NO PARKING HATCHING
 STA 180+84.00 - STA 180+93.00 RT, NO PARKING HATCHING
 STA 180+93.00 - STA 182+08.00 EDGE LINE RT
 STA 181+01.00 - STA 181+43.00 PARKING STALLS LT
 STA 181+45.00 - STA 181+55.00 LT, NO PARKING HATCHING
 STA 182+08.00 - STA 182+45.00 PARKING STALLS LT
 STA 182+08.00 - STA 182+75.00 EDGE LINE LT & RT

646.602 TEMPORARY 4 INCH WHITE LINE, PAINT
 (ALL LINES WILL INCLUDE EDGE LINE BREAKS AND
 RADIUS FOR TOWN HIGHWAYS)
 CASTLETON:
 STA 176+75.00 - STA 177+57.00 EDGE LINE LT & RT
 STA 177+57.00 - STA 179+78.00 EDGE LINE LT
 STA 177+57.00 - STA 178+10.00 PARKINGS STALLS RT
 STA 178+49.00 - STA 178+59.00 RT, NO PARKING HATCHING
 STA 178+59.00 - STA 178+83.00 PARKING STALLS RT
 STA 178+83.00 - STA 179+09.00 RT, NO PARKING HATCHING
 STA 179+49.00 - STA 179+69.00 RT, NO PARKING HATCHING
 STA 179+69.00 - STA 180+12.00 PARKING STALLS RT
 STA 179+78.00 - STA 179+96.00 LT, NO PARKING HATCHING
 STA 179+96.00 - STA 180+64.00 PARKING STALLS LT
 STA 180+55.00 - STA 180+84.00 PARKING STALLS RT
 STA 180+64.00 - STA 180+55.00 RT, NO PARKING HATCHING
 STA 180+64.00 - STA 180+74.00 LT, NO PARKING HATCHING
 STA 180+84.00 - STA 180+93.00 RT, NO PARKING HATCHING
 STA 180+93.00 - STA 182+08.00 EDGE LINE RT
 STA 181+01.00 - STA 181+43.00 PARKING STALLS LT
 STA 181+45.00 - STA 181+55.00 LT, NO PARKING HATCHING
 STA 182+08.00 - STA 182+45.00 PARKING STALLS LT
 STA 182+08.00 - STA 182+75.00 EDGE LINE LT & RT

646.612 TEMPORARY 4 INCH YELLOW LINE, PAINT
 (ALL LINES WILL INCLUDE C/L BREAKS FOR
 TOWN HIGHWAYS) S=SOLID, D=DASHED
 CASTLETON:
 STA 176+75.00 - STA 182+75.00 LT & RT
 STA 179+30.88 DOUBLE SOLID RT, TH-9
 STA 179+62.56 DOUBLE SOLID LT, TH-6
 646.442 DURABLE 8 INCH WHITE LINE, THERMOPLASTIC OR
 646.443 DURABLE 8 INCH WHITE LINE, EPOXY PAINT OR
 646.444 DURABLE 8 INCH WHITE LINE, POLYUREA
 CASTLETON: SEE NOTE 4
 STA 180+12.0 - STA 180+24.0 FIRE HYDRANT NO PARKING ZONE RT
~~STA 182+31.0 - STA 182+37.0 NO PARKING HATCHING LT~~
~~STA 178+48.0 - STA 179+07.0 SIDEWALK DESIGNATION LINE RT~~
 646.482 DURABLE 24 INCH STOP BAR, THERMOPLASTIC OR
 646.483 DURABLE 24 INCH STOP BAR, EPOXY PAINT OR
 646.484 DURABLE 24 INCH STOP BAR, POLYUREA
 CASTLETON:
 STA 179+30.88 RT, TH-9
 STA 179+62.56 LT, TH-6
 646.682 TEMPORARY 24 INCH STOP BAR, PAINT
 CASTLETON:
 STA 179+30.88 RT, TH-9
 STA 179+62.56 LT, TH-6

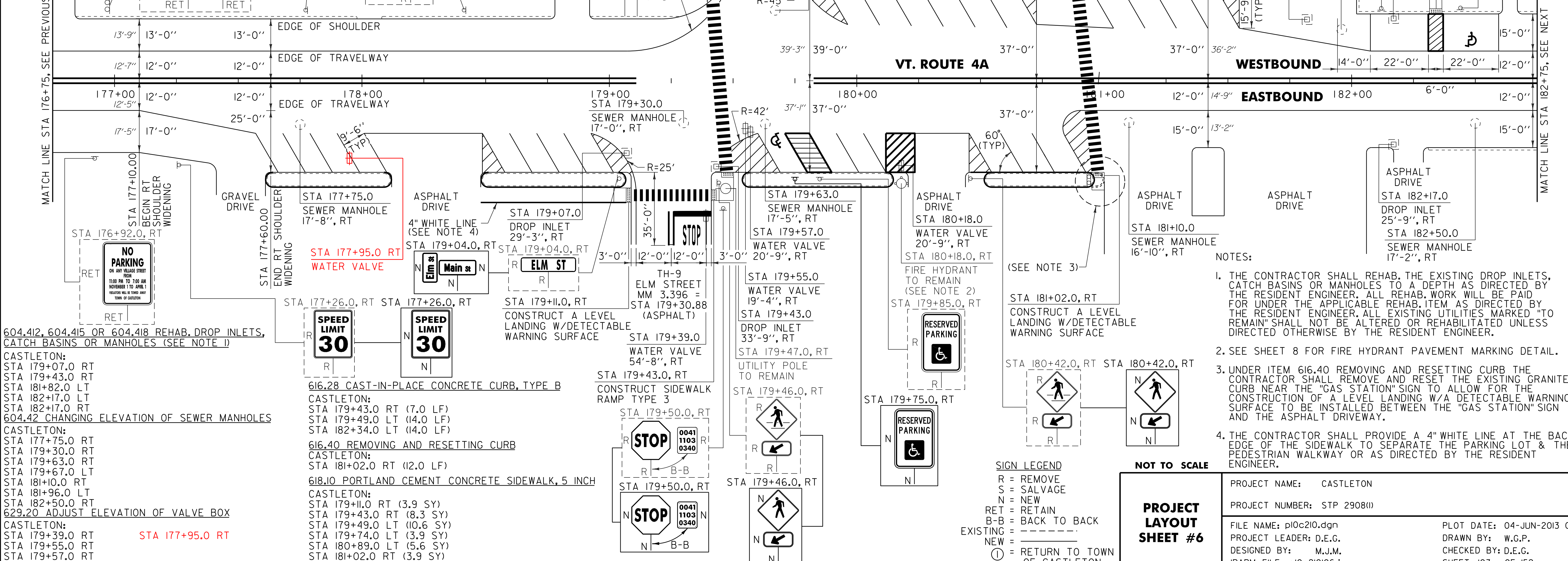
646.492 DURABLE LETTER OR SYMBOL, THERMOPLASTIC OR
 646.493 DURABLE LETTER OR SYMBOL, EPOXY PAINT
 CASTLETON:
 STA 179+30.88 RT, TH-9 "S,T,O,P" (4 EA)
 STA 179+62.56 LT, TH-6 "S,T,O,P" (4 EA)
 STA 179+67.60 RT, HANDICAP SYMBOL (1EA)
 STA 182+46.82 LT, HANDICAP SYMBOL (1EA)
 646.692 TEMPORARY LETTER OR SYMBOL, PAINT
 CASTLETON:
 STA 179+30.88 RT, TH-9 "S,T,O,P" (8 EA)
 STA 179+62.56 LT, TH-6 "S,T,O,P" (8 EA)
 646.502 DURABLE CROSSWALK MARKING, THERMOPLASTIC OR
 646.503 DURABLE CROSSWALK MARKING, EPOXY PAINT
 CASTLETON:
 STA 179+30.88 RT, TH-9
 STA 179+41.00 LT & RT
 STA 179+62.56 LT, TH-6
 STA 180+89.00 LT & RT
 646.702 TEMPORARY CROSSWALK MARKING, PAINT
 CASTLETON:
 STA 179+30.88 RT, TH-9
 STA 179+41.00 LT & RT
 STA 179+62.56 LT, TH-6
 STA 180+89.00 LT & RT

646.412 DURABLE 4 INCH YELLOW LINE, THERMOPLASTIC OR
 646.413 DURABLE 4 INCH YELLOW LINE, EPOXY PAINT OR
 646.414 DURABLE 4 INCH YELLOW LINE, POLYUREA
 (ALL LINES WILL INCLUDE C/L BREAKS FOR
 TOWN HIGHWAYS) S=SOLID, D=DASHED
 CASTLETON:
 STA 176+75.00 - STA 182+75.00 LT & RT
 STA 179+30.88 DOUBLE SOLID RT, TH-9
 STA 179+62.56 DOUBLE SOLID LT, TH-6

646.412 DURABLE 4 INCH YELLOW LINE, THERMOPLASTIC OR
 646.413 DURABLE 4 INCH YELLOW LINE, EPOXY PAINT OR
 646.414 DURABLE 4 INCH YELLOW LINE, POLYUREA
 (ALL LINES WILL INCLUDE C/L BREAKS FOR
 TOWN HIGHWAYS) S=SOLID, D=DASHED
 CASTLETON:
 STA 176+75.00 - STA 182+75.00 LT & RT
 STA 179+30.88 DOUBLE SOLID RT, TH-9
 STA 179+62.56 DOUBLE SOLID LT, TH-6

646.612 TEMPORARY 4 INCH YELLOW LINE, PAINT
 (ALL LINES WILL INCLUDE C/L BREAKS FOR
 TOWN HIGHWAYS) S=SOLID, D=DASHED
 CASTLETON:
 STA 176+75.00 - STA 182+75.00 LT & RT
 STA 179+30.88 DOUBLE SOLID RT, TH-9
 STA 179+62.56 DOUBLE SOLID LT, TH-6
 646.442 DURABLE 8 INCH WHITE LINE, THERMOPLASTIC OR
 646.443 DURABLE 8 INCH WHITE LINE, EPOXY PAINT OR
 646.444 DURABLE 8 INCH WHITE LINE, POLYUREA
 CASTLETON: SEE NOTE 4
 STA 180+12.0 - STA 180+24.0 FIRE HYDRANT NO PARKING ZONE RT
~~STA 182+31.0 - STA 182+37.0 NO PARKING HATCHING LT~~
~~STA 178+48.0 - STA 179+07.0 SIDEWALK DESIGNATION LINE RT~~
 646.482 DURABLE 24 INCH STOP BAR, THERMOPLASTIC OR
 646.483 DURABLE 24 INCH STOP BAR, EPOXY PAINT OR
 646.484 DURABLE 24 INCH STOP BAR, POLYUREA
 CASTLETON:
 STA 179+30.88 RT, TH-9
 STA 179+62.56 LT, TH-6
 646.682 TEMPORARY 24 INCH STOP BAR, PAINT
 CASTLETON:
 STA 179+30.88 RT, TH-9
 STA 179+62.56 LT, TH-6

646.492 DURABLE LETTER OR SYMBOL, THERMOPLASTIC OR
 646.493 DURABLE LETTER OR SYMBOL, EPOXY PAINT
 CASTLETON:
 STA 179+30.88 RT, TH-9 "S,T,O,P" (4 EA)
 STA 179+62.56 LT, TH-6 "S,T,O,P" (4 EA)
 STA 179+67.60 RT, HANDICAP SYMBOL (1EA)
 STA 182+46.82 LT, HANDICAP SYMBOL (1EA)
 646.692 TEMPORARY LETTER OR SYMBOL, PAINT
 CASTLETON:
 STA 179+30.88 RT, TH-9 "S,T,O,P" (8 EA)
 STA 179+62.56 LT, TH-6 "S,T,O,P" (8 EA)
 646.502 DURABLE CROSSWALK MARKING, THERMOPLASTIC OR
 646.503 DURABLE CROSSWALK MARKING, EPOXY PAINT
 CASTLETON:
 STA 179+30.88 RT, TH-9
 STA 179+41.00 LT & RT
 STA 179+62.56 LT, TH-6
 STA 180+89.00 LT & RT
 646.702 TEMPORARY CROSSWALK MARKING, PAINT
 CASTLETON:
 STA 179+30.88 RT, TH-9
 STA 179+41.00 LT & RT
 STA 179+62.56 LT, TH-6
 STA 180+89.00 LT & RT



604.412, 604.415 OR 604.418 REHAB. DROP INLETS,
 CATCH BASINS OR MANHOLES (SEE NOTE 1)
 CASTLETON:
 STA 179+07.0 RT
 STA 179+43.0 RT
 STA 181+82.0 LT
 STA 182+17.0 LT
 STA 182+17.0 RT
 604.42 CHANGING ELEVATION OF SEWER MANHOLES
 CASTLETON:
 STA 177+75.0 RT
 STA 179+30.0 RT
 STA 179+63.0 RT
 STA 179+67.0 LT
 STA 181+10.0 RT
 STA 181+96.0 LT
 STA 182+50.0 RT
 629.20 ADJUST ELEVATION OF VALVE BOX
 CASTLETON:
 STA 179+39.0 RT
 STA 179+55.0 RT
 STA 179+57.0 RT
 STA 180+18.0 RT

616.28 CAST-IN-PLACE CONCRETE CURB, TYPE B
 CASTLETON:
 STA 179+43.0 RT (7.0 LF)
 STA 179+49.0 LT (14.0 LF)
 STA 182+34.0 LT (14.0 LF)
 616.40 REMOVING AND RESETTNG CURB
 CASTLETON:
 STA 181+02.0 RT (12.0 LF)
 618.10 PORTLAND CEMENT CONCRETE SIDEWALK, 5 INCH
 CASTLETON:
 STA 179+11.0 RT (3.9 SY)
 STA 179+43.0 RT (8.3 SY)
 STA 179+49.0 LT (10.6 SY)
 STA 179+74.0 LT (3.9 SY)
 STA 180+89.0 LT (5.6 SY)
 STA 181+02.0 RT (3.9 SY)
 STA 182+34.0 LT (5.6 SY)

616.40 REMOVING AND RESETTNG CURB
 CASTLETON:
 STA 181+02.0 RT (12.0 LF)
 618.10 PORTLAND CEMENT CONCRETE SIDEWALK, 5 INCH
 CASTLETON:
 STA 179+11.0 RT (3.9 SY)
 STA 179+43.0 RT (8.3 SY)
 STA 179+49.0 LT (10.6 SY)
 STA 179+74.0 LT (3.9 SY)
 STA 180+89.0 LT (5.6 SY)
 STA 181+02.0 RT (3.9 SY)
 STA 182+34.0 LT (5.6 SY)

NOTES:
 1. THE CONTRACTOR SHALL REHAB. THE EXISTING DROP INLETS, CATCH BASINS OR MANHOLES TO A DEPTH AS DIRECTED BY THE RESIDENT ENGINEER. ALL REHAB. WORK WILL BE PAID FOR UNDER THE APPLICABLE REHAB. ITEM AS DIRECTED BY THE RESIDENT ENGINEER. ALL EXISTING UTILITIES MARKED "TO REMAIN" SHALL NOT BE ALTERED OR REHABILITATED UNLESS DIRECTED OTHERWISE BY THE RESIDENT ENGINEER.
 2. SEE SHEET 8 FOR FIRE HYDRANT PAVEMENT MARKING DETAIL.
 3. UNDER ITEM 616.40 REMOVING AND RESETTNG CURB THE CONTRACTOR SHALL REMOVE AND RESET THE EXISTING GRANITE CURB NEAR THE "GAS STATION" SIGN TO ALLOW FOR THE CONSTRUCTION OF A LEVEL LANDING W/A DETECTABLE WARNING SURFACE TO BE INSTALLED BETWEEN THE "GAS STATION" SIGN AND THE ASPHALT DRIVEWAY.
 4. THE CONTRACTOR SHALL PROVIDE A 4" WHITE LINE AT THE BACK EDGE OF THE SIDEWALK TO SEPARATE THE PARKING LOT & THE PEDESTRIAN WALKWAY OR AS DIRECTED BY THE RESIDENT ENGINEER.

SIGN LEGEND
 R = REMOVE
 S = SALVAGE
 N = NEW
 RET = RETAIN
 B-B = BACK TO BACK
 EXISTING = - - - - -
 NEW = _____
 (C) = RETURN TO TOWN OF CASTLETON

PROJECT NAME: CASTLETON
 PROJECT NUMBER: STP 2908(1)
 FILE NAME: p10c210.dgn
 PROJECT LEADER: D.E.G.
 DESIGNED BY: M.J.M.
 IPARM FILE: p10c210I06.i

PLOT DATE: 04-JUN-2013 09:3
 DRAWN BY: W.G.P.
 CHECKED BY: D.E.G.
 SHEET 103 OF 152

PROJECT LAYOUT SHEET #6