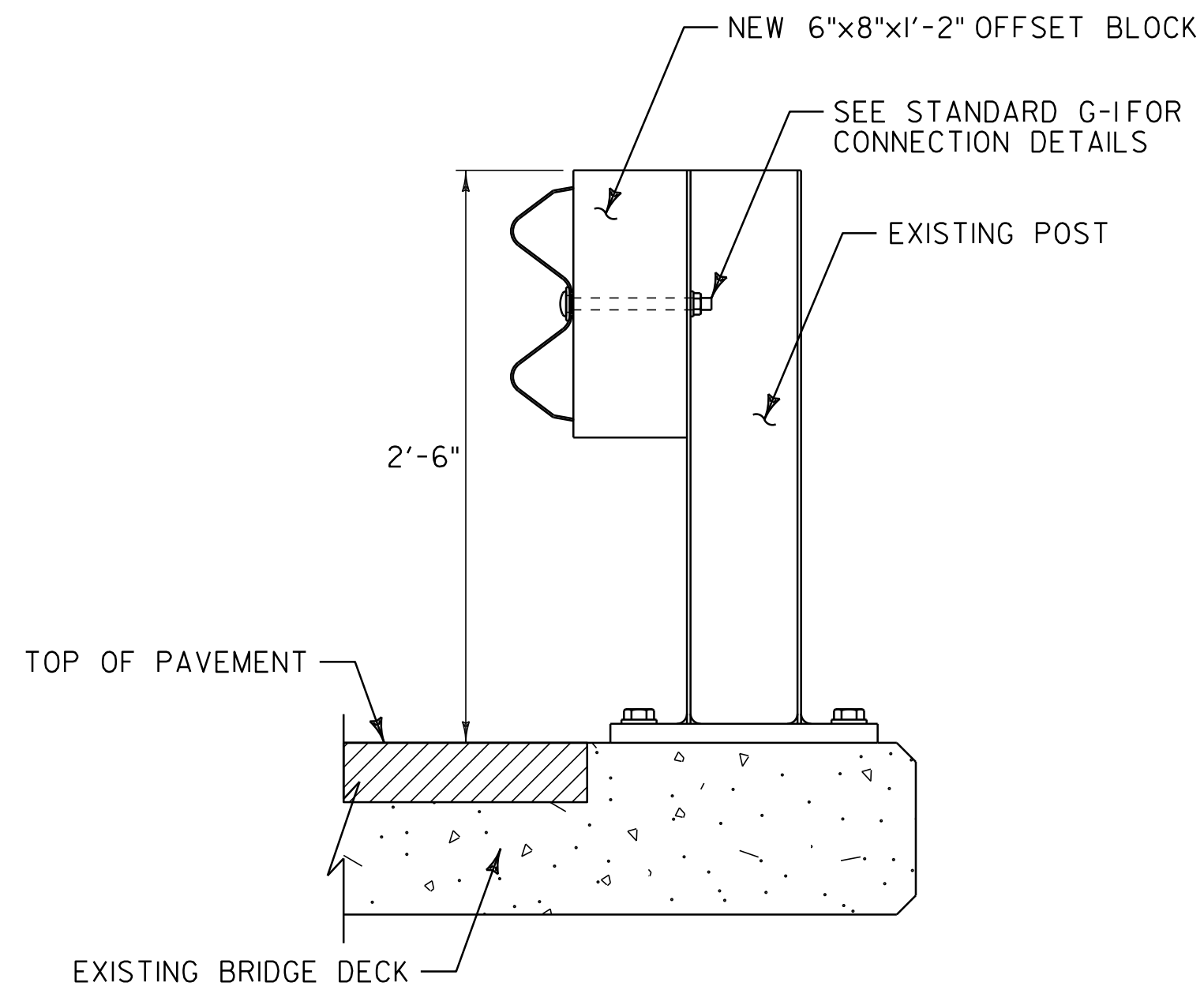


**BR 1 CASTLETON STATE HIGHWAY MM 0.079 = STA 4+19.50**



**BR 1 BRIDGE RAILING DETAIL**

**NOTES:**

1. SEE VAOT STANDARD SHEET SB-R6-82 FOR ADDITIONAL DETAILS.
2. THE CONTRACTOR SHALL INSTALL A NEW 16' RADIUS PANEL WITH ANCHORS AT EACH END AS DIRECTED BY THE RESIDENT ENGINEER.

**NOT TO SCALE**

<b>BRIDGE DETAIL SHEET #5</b>	PROJECT NAME: CASTLETON - WEST RUTLAND	
	PROJECT NUMBER: STP 2705(i)	
	FILE NAME: p07cl68.dgn	PLOT DATE: 04-JUN-2013 09:3
	PROJECT LEADER: D.E.G.	DRAWN BY: W.G.P.
DESIGNED BY: M.J.M.	CHECKED BY: D.E.G.	
IPARM FILE: p07cl68bd5.i	SHEET 85	OF 152