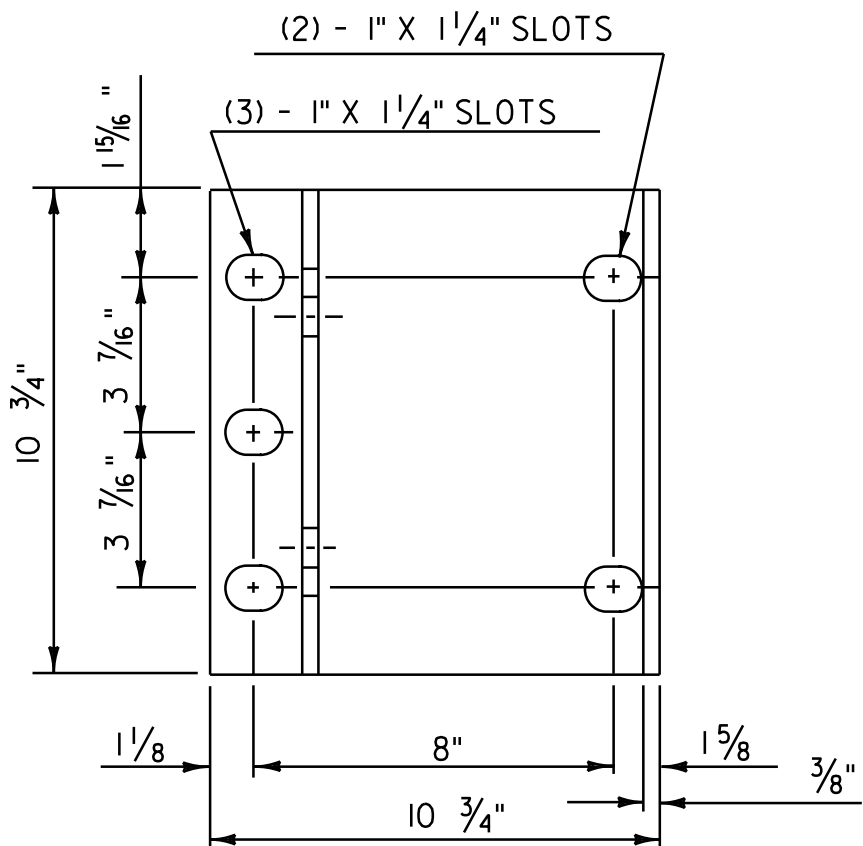
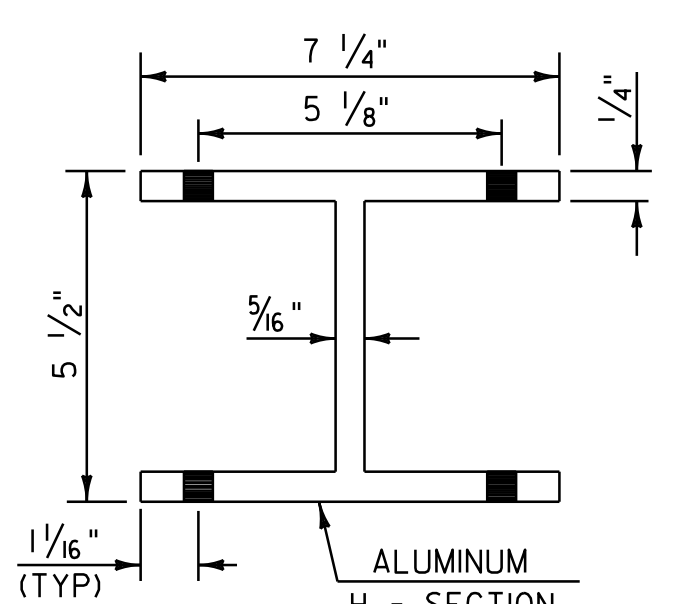
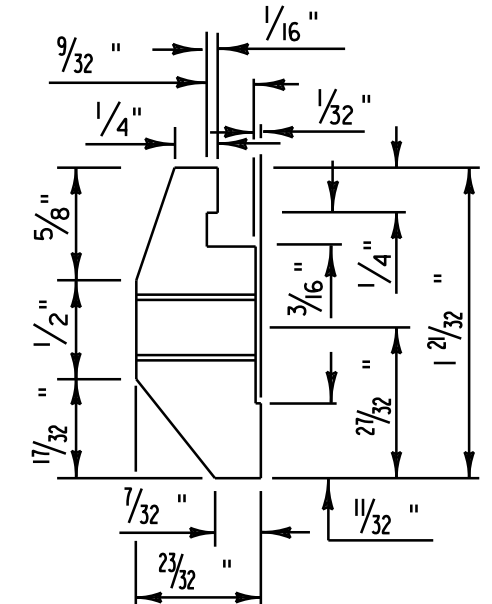
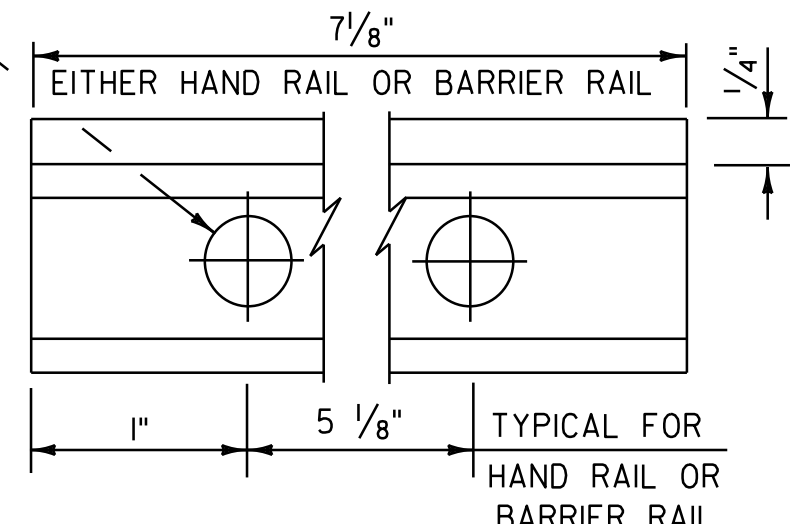
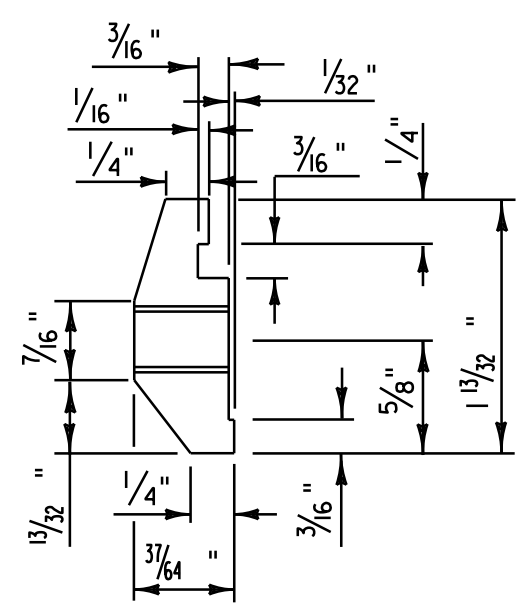


(2) 1/2" - 13 UNC THREADED HOLES FOR (2) 1/2" - 13 UNC X 1" STAINLESS STEEL HEX HEAD BOLTS WITH 1/16" O. D. X 1/32" I. D. X 3/32" THICK ALUMINUM WASHERS.



**NOTES**

- ANCHOR BOLTS, WASHERS AND HEAVY HEX NUTS SHALL CONFORM TO SUBSECTION 732.02(b)
- ALUMINUM POSTS, POST BASES, SPLICE BARS, CONNECTION BARS, RAILS AND BALUSTER FRAMES SHALL CONFORM TO SUBSECTION 732.02(a).
- ALUMINUM BALUSTER TUBES SHALL CONFORM TO SUBSECTION 732.02(a).
- ALUMINUM RAIL END CAPS SHALL CONFORM TO SUBSECTION 732.02(a).
- THE POST, RAIL, AND OFFSET BLOCK CONNECTION BOLTS SHALL CONFORM TO SUBSECTION 732.02(b).
- SET SCREWS FOR ATTACHING BALUSTERS TO RAILING SHALL CONFORM TO SUBSECTION 732.02(b).
- RIVETS SHALL CONFORM TO SUBSECTION 715.04(k)
- THE ANCHOR PLATE FOR THE POST ANCHOR ASSEMBLY SHALL CONFORM TO SUBSECTION 732.02(c).
- WELDING SHALL CONFORM TO THE REQUIREMENTS OF SUBSECTION 506.10.
- UNLESS OTHERWISE SPECIFIED, ANCHOR BOLTS SHALL BE CAST INTO THE CONCRETE AS DETAILED.
- WHENEVER FEASIBLE BARRIER RAIL AND HAND RAIL SECTIONS, SHALL BE FULL LENGTH SECTIONS (40'+ ) AND WHEN POSSIBLE SHALL BE ATTACHED TO THREE POSTS. RAILS SHALL BE SPLICED AT EACH DECK JOINT AND INTERMITTENTLY AS REQUIRED. SPLICES SHALL OCCUR WITHIN THE SAME PANEL.
- ENDS OF RAILS SHALL BE CUT SQUARE AND GROUND FREE OF BURRS OR RAGGED EDGES. EXPOSED ENDS SHALL BE CAPPED.
- THE CONCRETE CONTACT SURFACE AT THE POST BASE SHALL BE BUSH HAMMERED AND/OR SHIMMED AS REQUIRED FOR PROPER POST ALIGNMENT. POST HEIGHT ADJUSTMENTS LESS THAN 1/4" SHALL BE WITH 1/16" AND 1/8" SHIMS. CORRECTIONS EXCEEDING 1/4" SHALL BE WITH MORTAR CONFORMING WITH SUBSECTION 707.03. FABRIC BEARING PADS AND ANY REQUIRED SHIMS OR MORTAR ARE INCIDENTAL TO THE UNIT PRICE BID FOR THE RAILING.
- SHIMS AND 1/8" FABRIC BEARING PADS SHALL BE 10 3/4" SQUARE WITH SLOTTED HOLES SIZED AND LOCATED THE SAME AS THE POST BASE DETAIL. FABRIC BEARING PADS SHALL CONFORM TO SUBSECTION 732.02(f). SHIM MATERIAL SHALL CONFORM TO SUBSECTION 715.04(a).
- EXTRUDED SECTIONS ARE DETAILED TO COMPLY WITH CURRENT AASHTO-AGC-ARTBA STANDARDS. MINOR VARIATIONS OF THE DETAILS SHOWN MAY BE CONSIDERED PROVIDING THEY DO NOT REDUCE THE STRENGTH CAPACITY OF THE RAIL SYSTEM.
- ALUMINUM WASHERS SHALL BE CONFORM TO SUBSECTION 732.02(b).
- REFERENCE THIS SHEET WITH SHEETS 76 & 78 ALONG WITH SHEET 86 FOR BR 2 DETAILS.

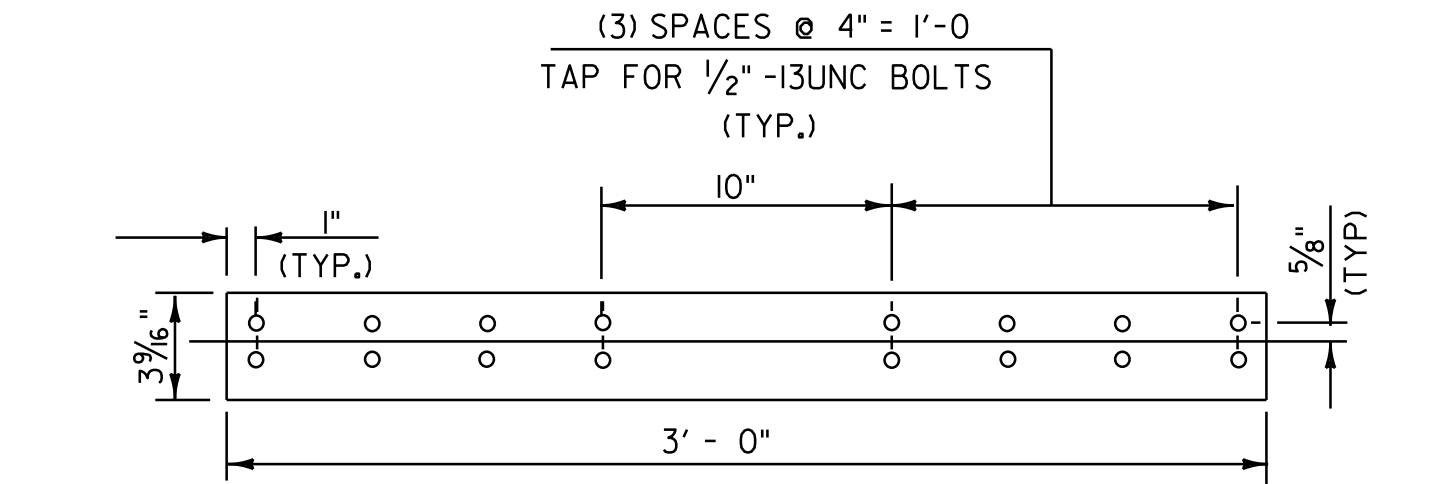
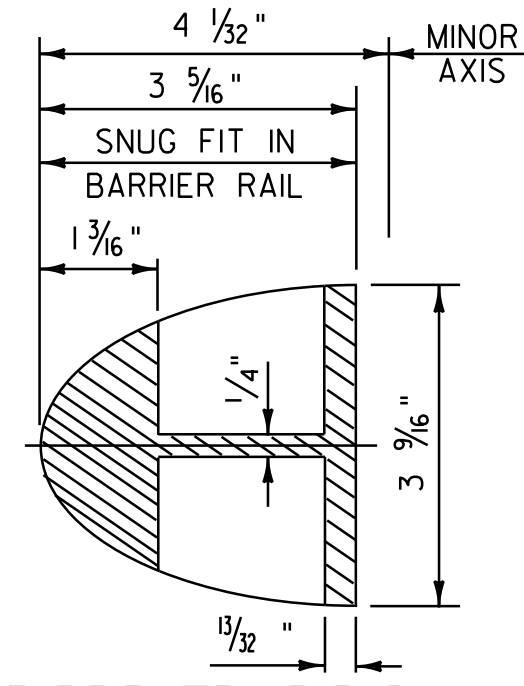
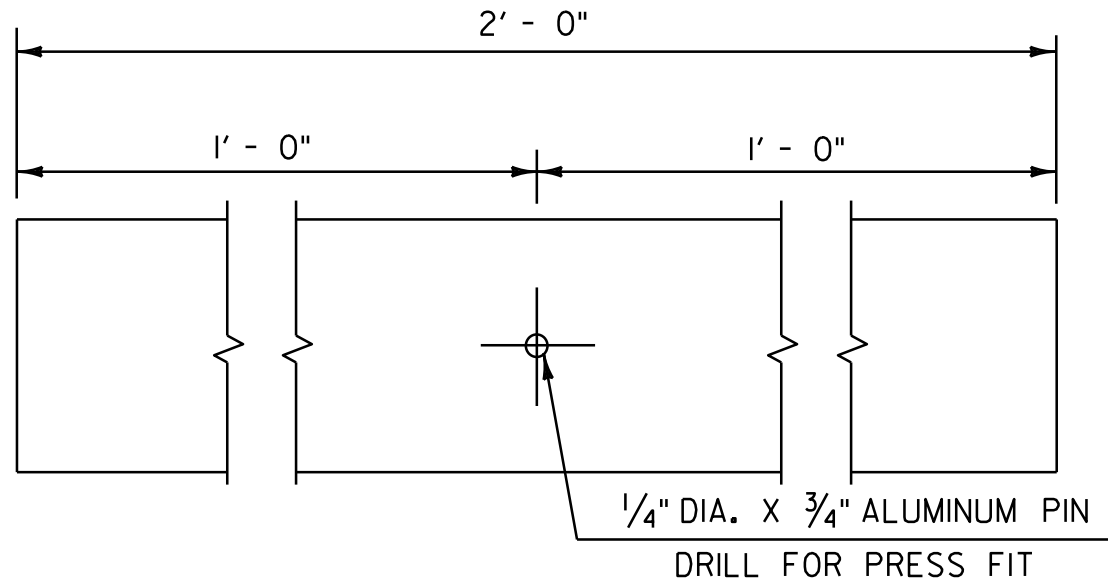
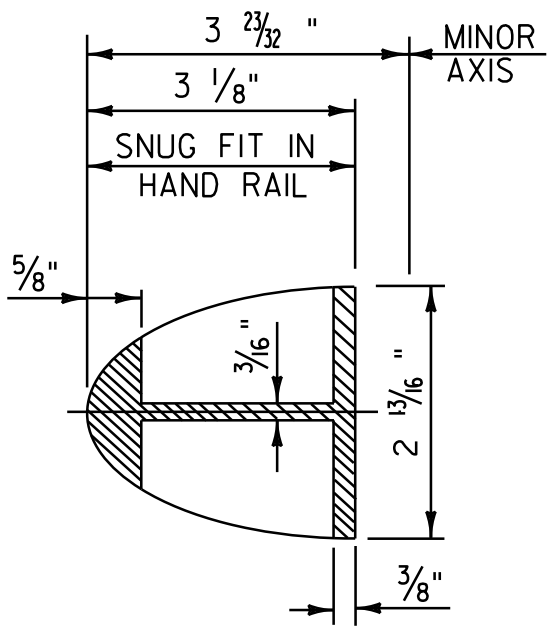
**POST CONNECTION HAND RAIL SECTION**

**POST CONNECTION ELEVATION**

**POST CONNECTION BARRIER RAIL SECTION**

**PLAN VIEW OF OFFSET BLOCK (TO BE USED ON SUPERSTRUCTURE ON CURB SIDE)**

**POST BASE PLAN**

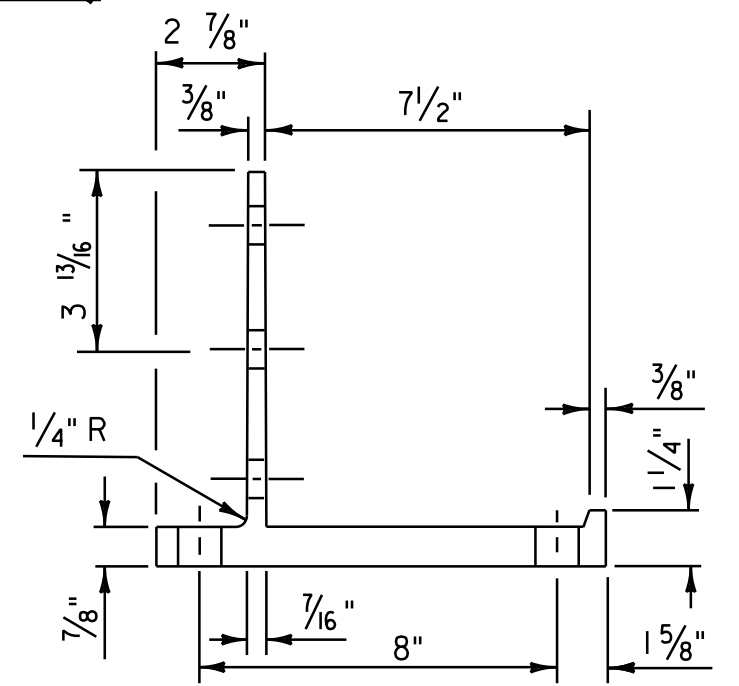
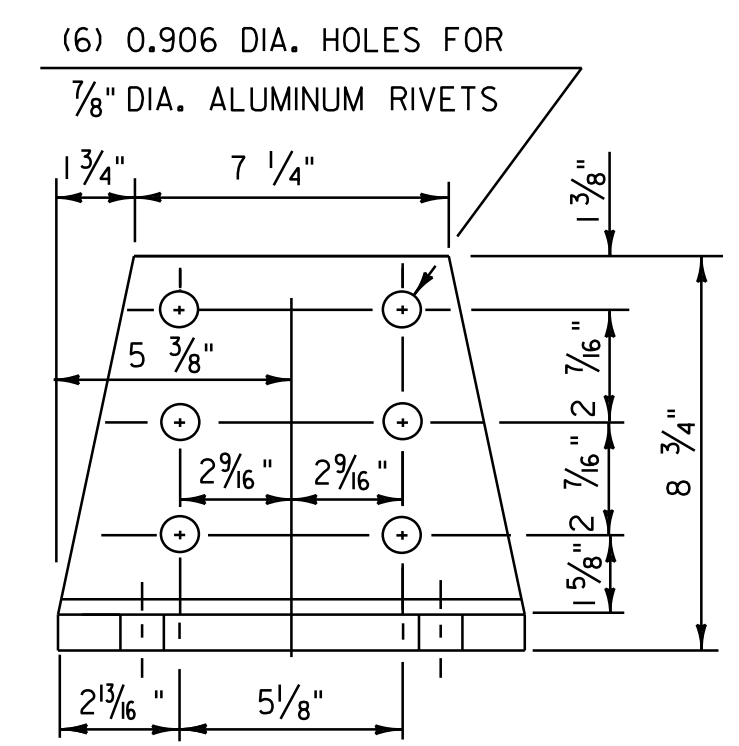


**ELEVATION OF STD. BARRIER RAIL SPLICE BAR (FROM BACK)**

**HAND RAIL SPLICE SECTION**

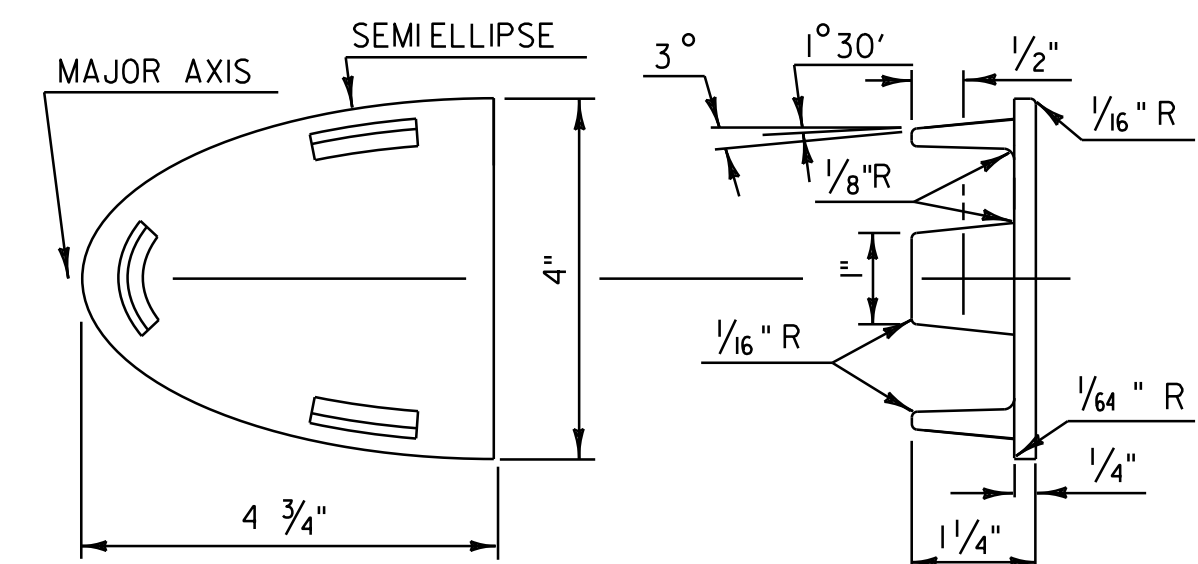
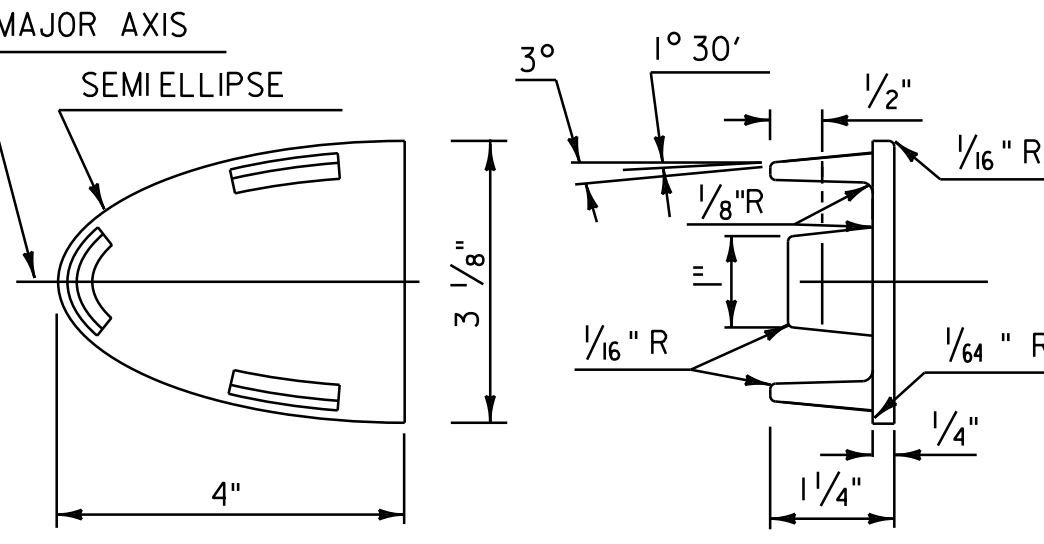
**ELEVATION OF HAND RAIL SPLICE BAR**

**BARRIER RAIL SPLICE SECTION**



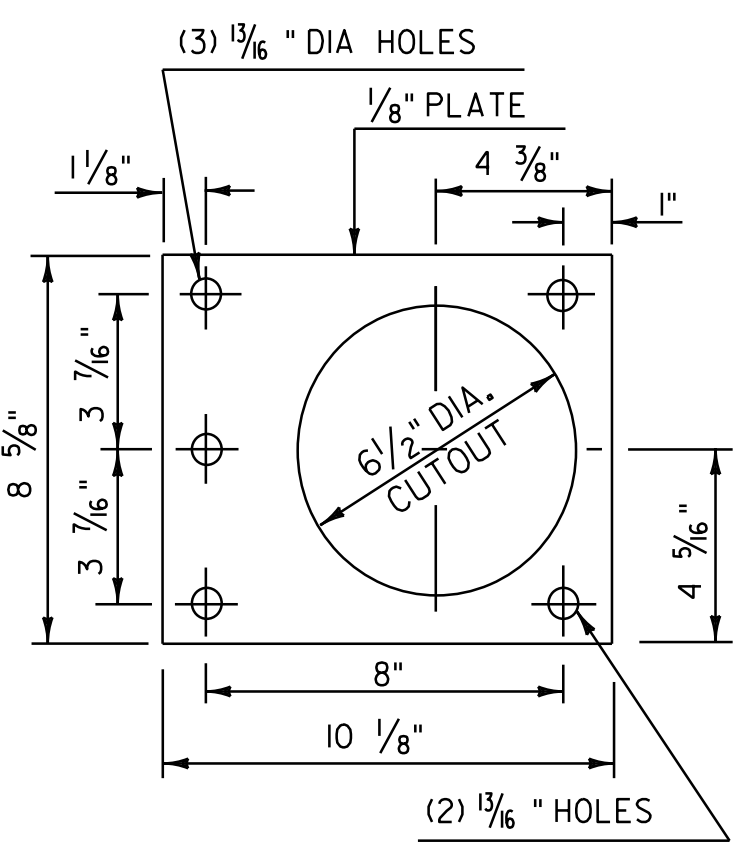
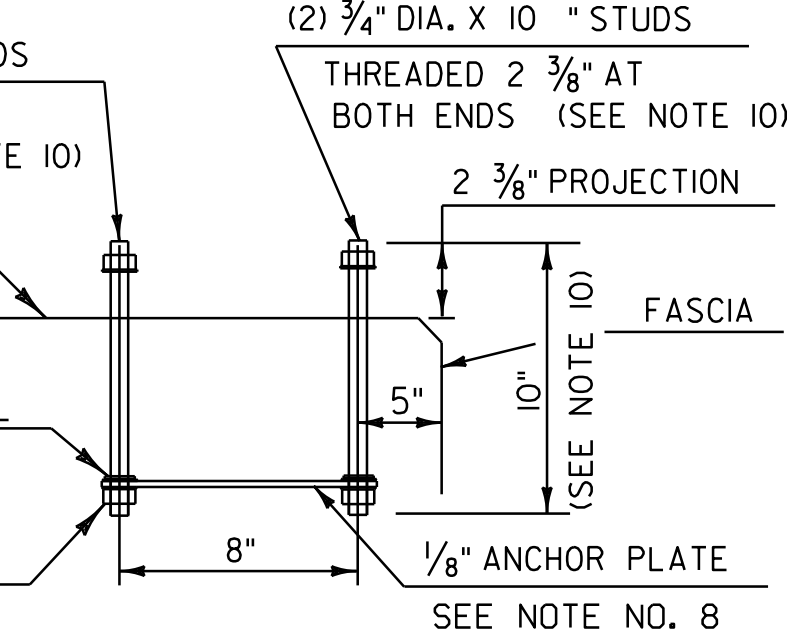
**POST BASE FRONT ELEVATION**

**POST BASE SECTION**



**HAND RAIL END CAP**

**BARRIER RAIL END CAP**



**POST ANCHOR ASSEMBLY**

**ANCHOR PLATE**

NOT TO SCALE

**ALUMINUM APPROACH RAILING CONNECTION DETAIL SHEET #2**

PROJECT NAME:	CASTLETON - WEST RUTLAND
PROJECT NUMBER:	STP 2705(1)
FILE NAME:	p07cl68.dgn
PROJECT LEADER:	D.E.G.
DESIGNED BY:	M.J.M.
IPARM FILE:	p07cl68aar2.1
PLOT DATE:	04-JUN-2013 09:3
DRAWN BY:	W.G.P.
CHECKED BY:	D.E.G.
SHEET	77 OF 152