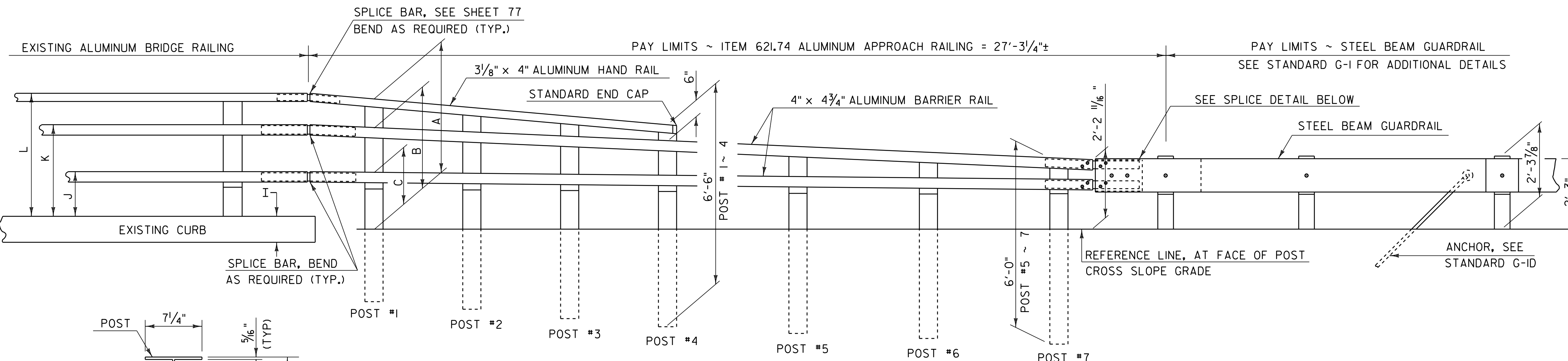
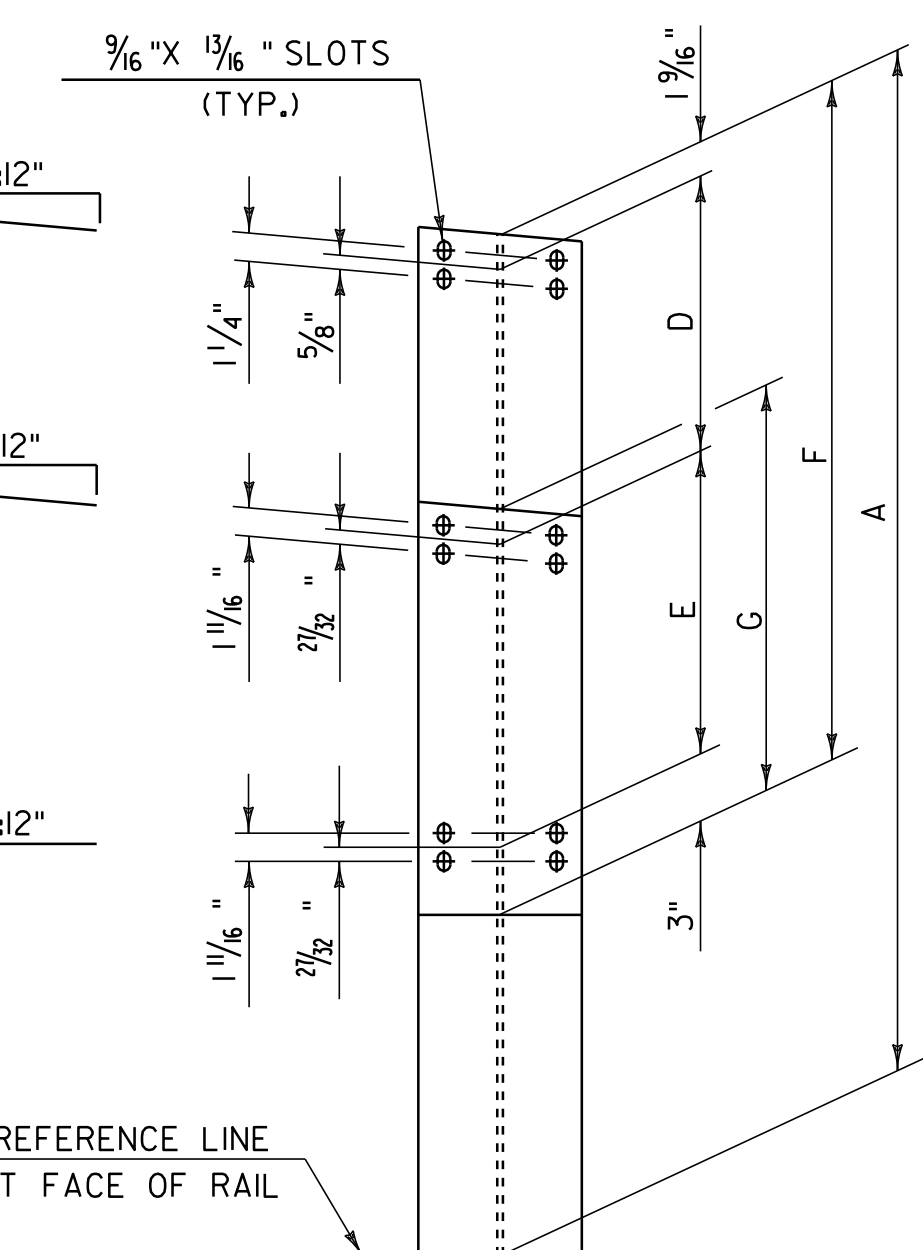
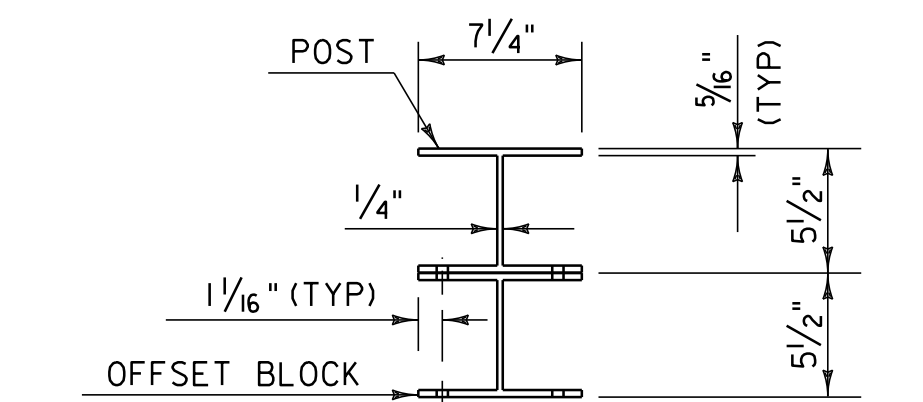


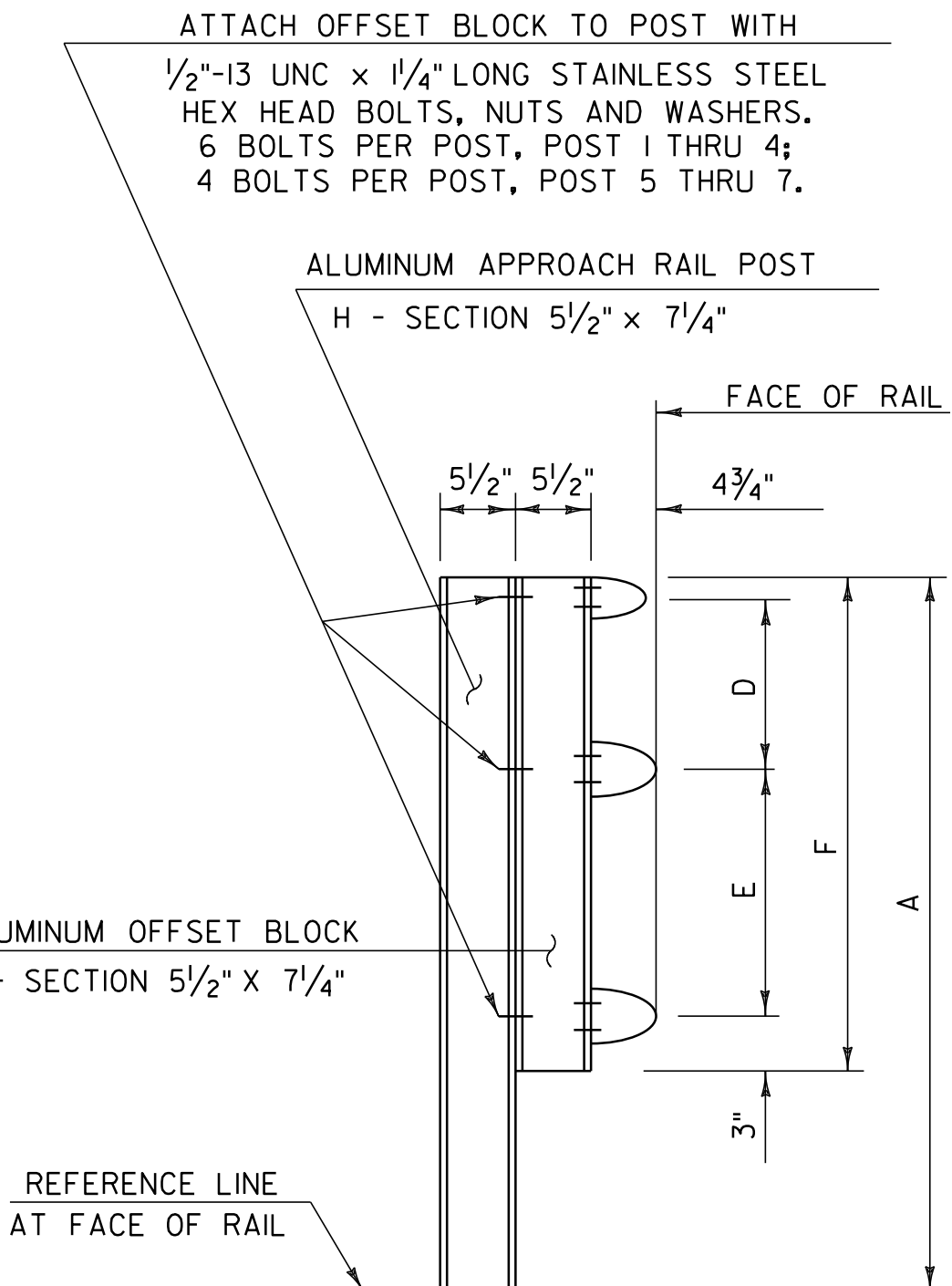
**PLAN**



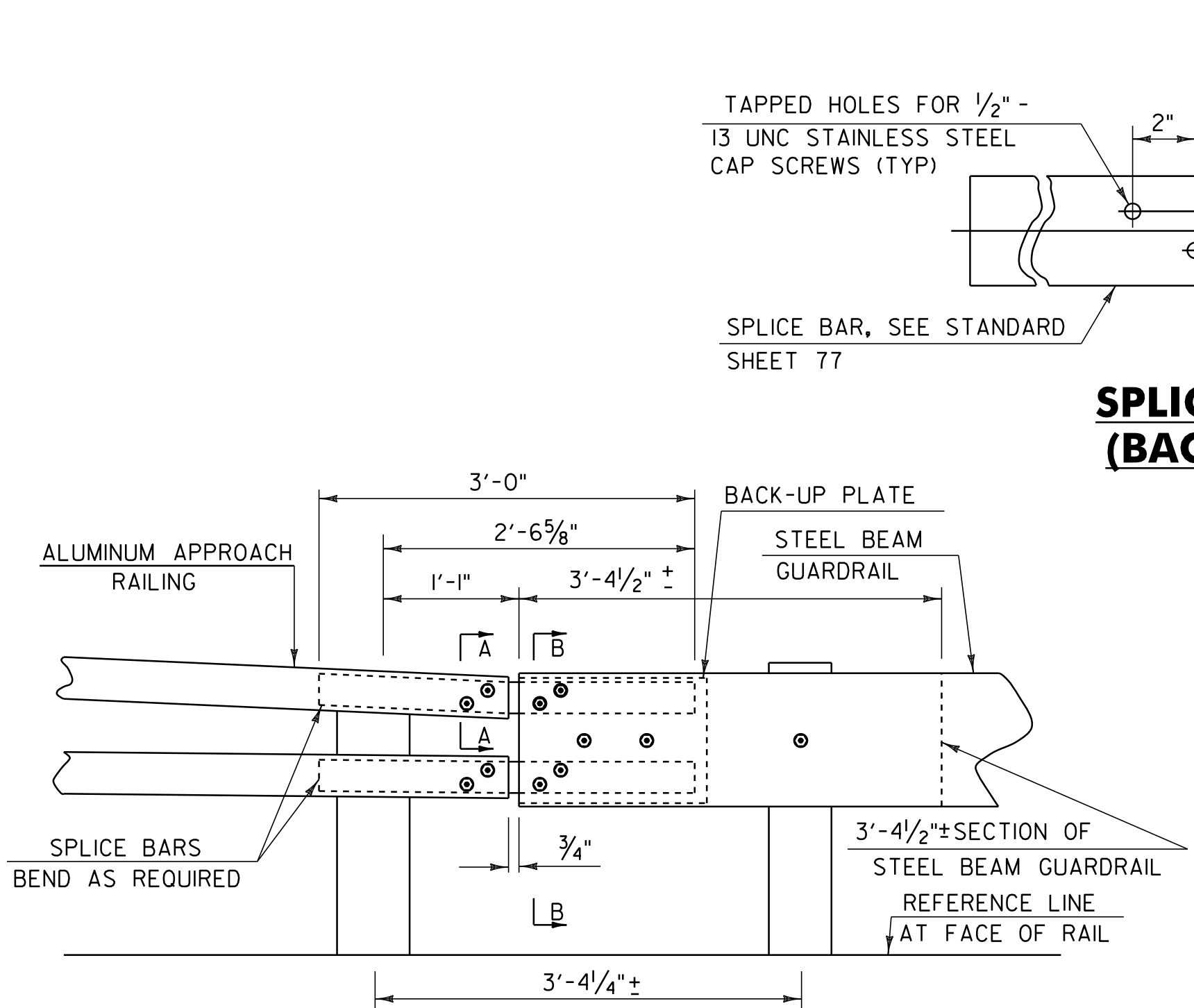
**ELEVATION**



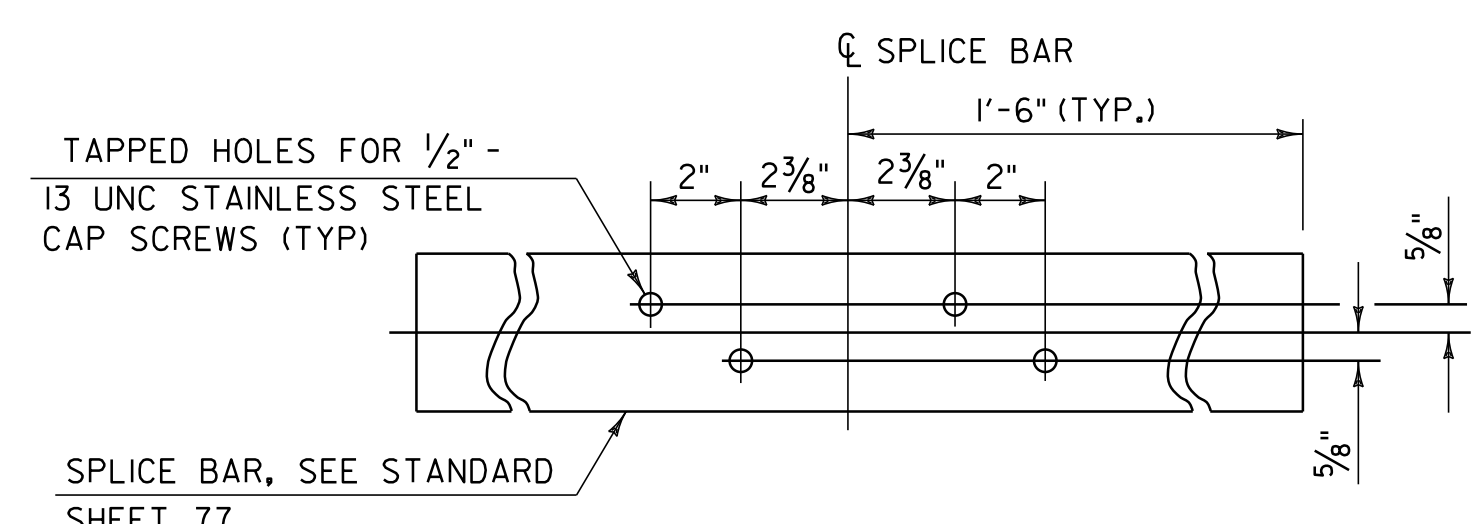
**POST ELEVATION & SECTION**  
(SEE NOTE 7)



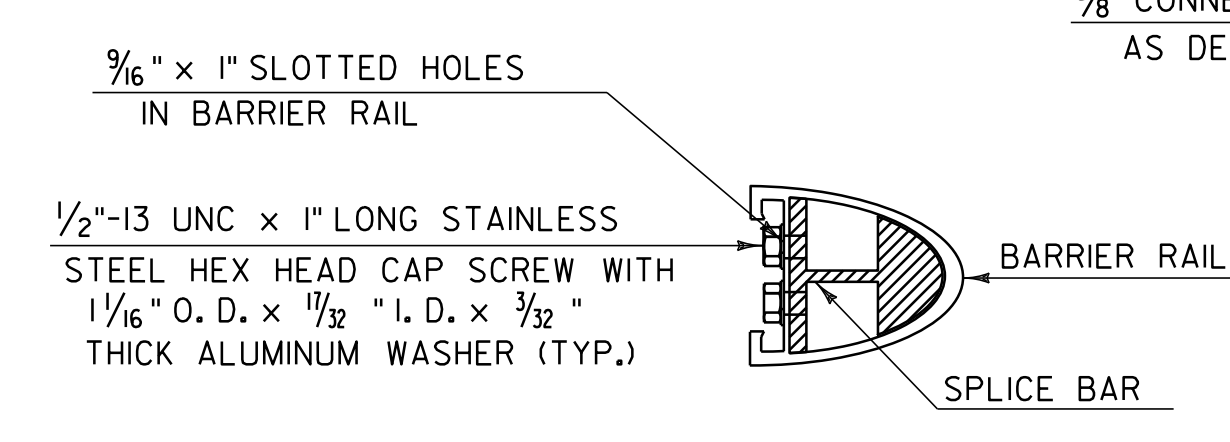
**RAIL DETAIL**  
(SEE NOTE 7)



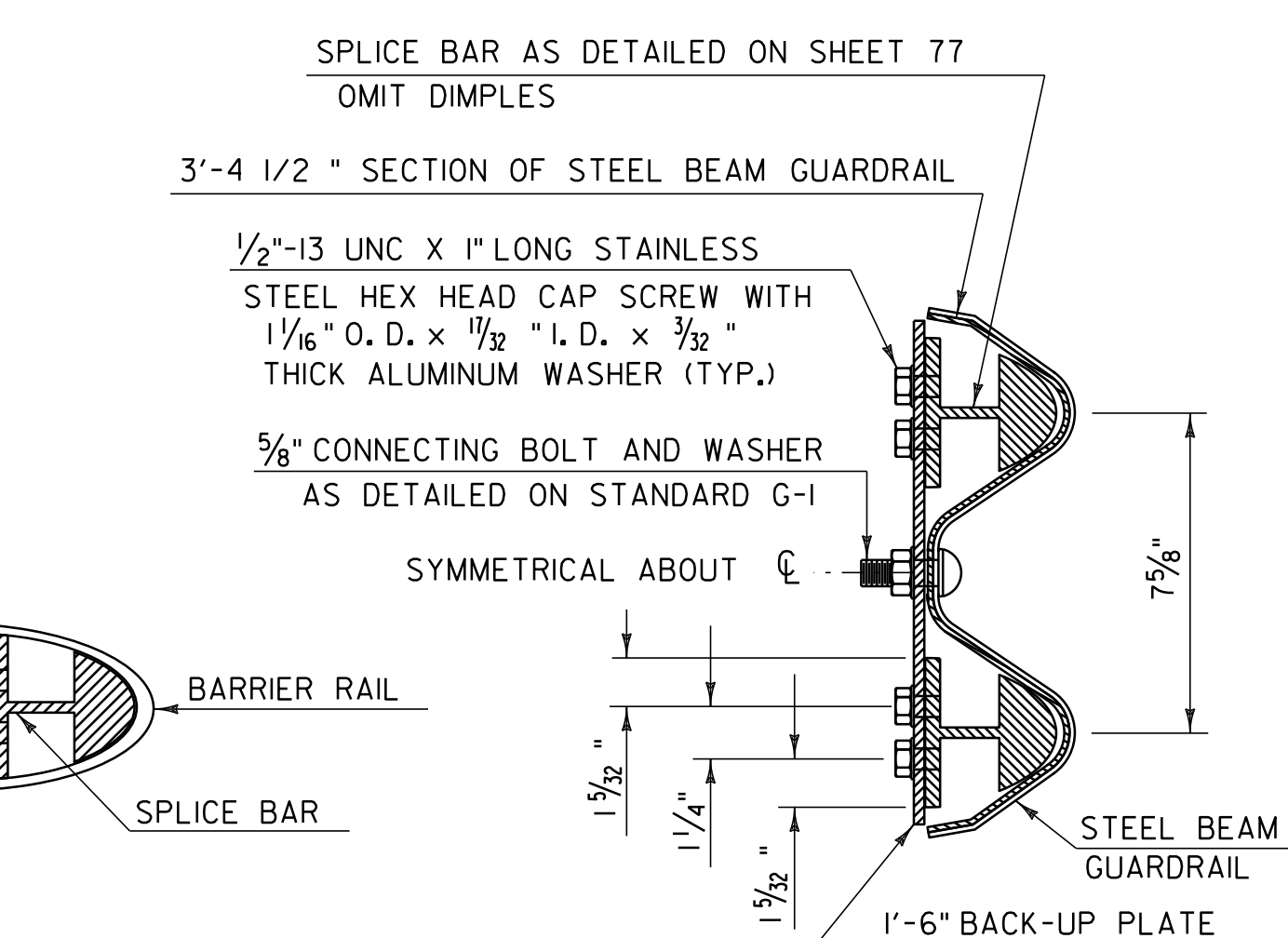
**SPLICE DETAIL**



**SPLICE BAR DETAIL (BACK SIDE VIEW)**

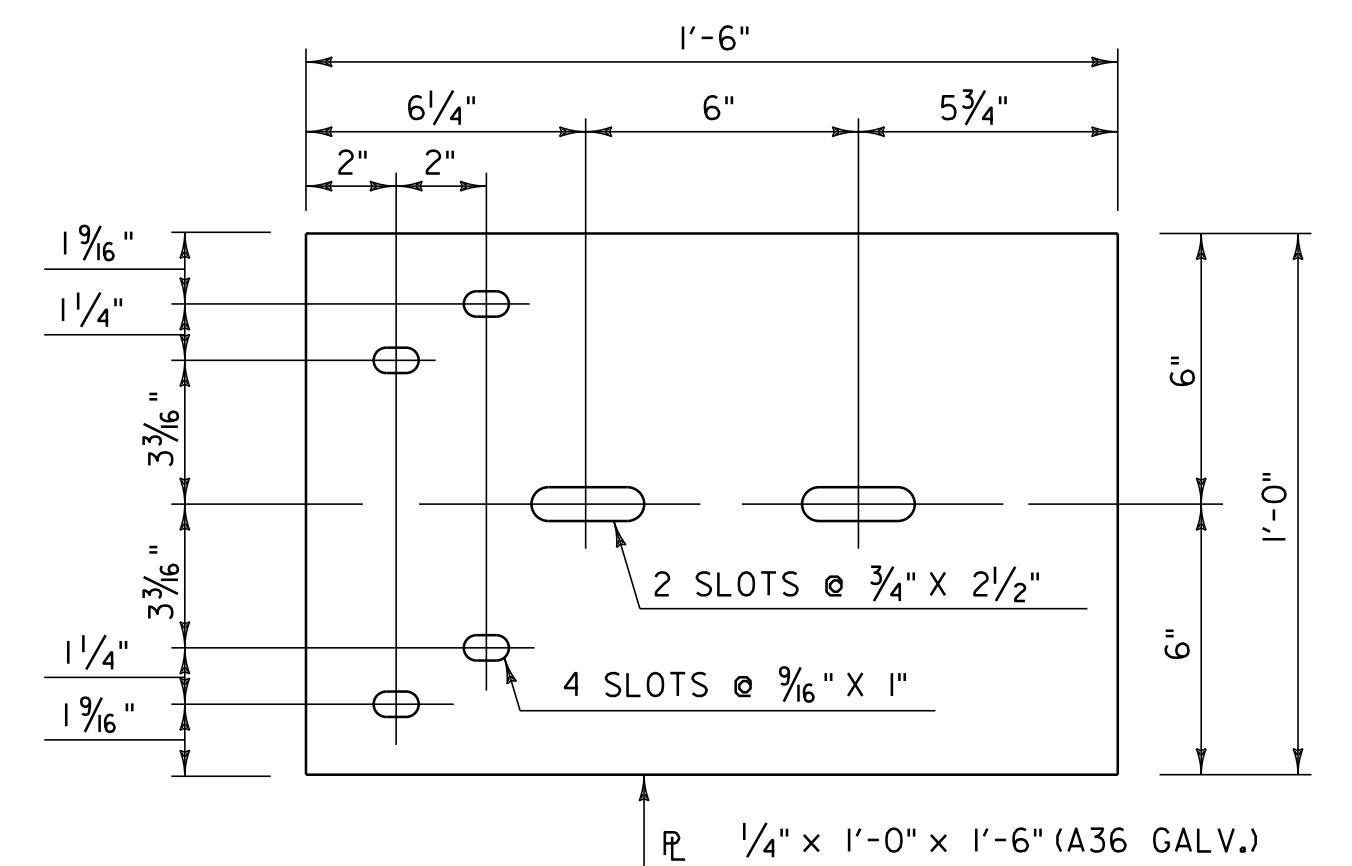


**SECTION A - A**



**SECTION B - B**

- NOTES**
- POST 1 THROUGH 7 SHALL BE EXTRUDED ALUMINUM.
  - ALL STRUCTURAL STEEL SHALL BE ASTM A-36 GALVANIZED AFTER FABRICATION.
  - ALL ITEMS NOT OTHERWISE INDICATED SHALL MEET THE SPECIFICATION REQUIREMENTS OF THE STANDARD SHEETS ON WHICH THEY ARE DETAILED.
  - SEE VAOT STANDARD G-1 FOR STEEL BEAM GUARDRAIL DETAILS.
  - THE COST OF ALL MATERIALS AND LABOR FOR THE SPLICE BETWEEN THE ALUMINUM APPROACH RAILING AND THE STEEL BEAM GUARDRAIL SHALL BE INCIDENTAL TO ITEM 621.74 ALUMINUM APPROACH RAILING.
  - DIMENSIONS SHOWN ARE FROM A REFERENCE LINE AT THE FACE OF POST FOR A NORMAL CROWNED SECTION. APPROPRIATE CORRECTIONS SHALL BE MADE FOR CROSS SLOPES OTHER THAN A NORMAL SECTION.
  - SEE SHEET 78 FOR ALUMINUM APPROACH RAIL DIMENSIONS TABLE.



**BACK-UP PLATE DETAIL**

**NOT TO SCALE**

<b>ALUMINUM APPROACH RAILING CONNECTION DETAIL SHEET #1</b>	PROJECT NAME: CASTLETON - WEST RUTLAND	PLOT DATE: 04-JUN-2013 09:3
	PROJECT NUMBER: STP 2705(0)	DRAWN BY: W.G.P.
	FILE NAME: p07cl68.dgn	CHECKED BY: D.E.G.
	PROJECT LEADER: D.E.G.	SHEET 76 OF 152
	DESIGNED BY: M.J.M.	
	IPARM FILE: p07cl68aar1.i	

NOTE:  
1. REFERENCE THIS SHEET WITH SHEETS 77 & 78 ALONG WITH SHEET 86 FOR BR 2 DETAILS.