

646.402 DURABLE 4 INCH WHITE LINE, THERMOPLASTIC OR  
 646.403 DURABLE 4 INCH WHITE LINE, EPOXY PAINT OR  
 646.404 DURABLE 4 INCH WHITE LINE, POLYUREA  
 (ALL LINES WILL INCLUDE EDGE LINE BREAKS AND  
 RADIUS FOR TOWN HIGHWAYS)  
 CASTLETON:  
 STA 203+49.12 - STA 209+25.00 EDGE LINE LT & RT  
 STA 208+20.00 - STA 209+25.00 DOTTED LANE LINE RT

646.412 DURABLE 4 INCH YELLOW LINE, THERMOPLASTIC OR  
 646.413 DURABLE 4 INCH YELLOW LINE, EPOXY PAINT OR  
 646.414 DURABLE 4 INCH YELLOW LINE, POLYUREA  
 (ALL LINES WILL INCLUDE C/L BREAKS FOR  
 TOWN HIGHWAYS) S=SOLID, D=DASHED  
 CASTLETON:  
 STA 203+49.12 - STA 205+45.00 LT & RT  
 STA 205+45.00 - STA 209+25.00 DOUBLE SOLID MEDIAN LT & RT

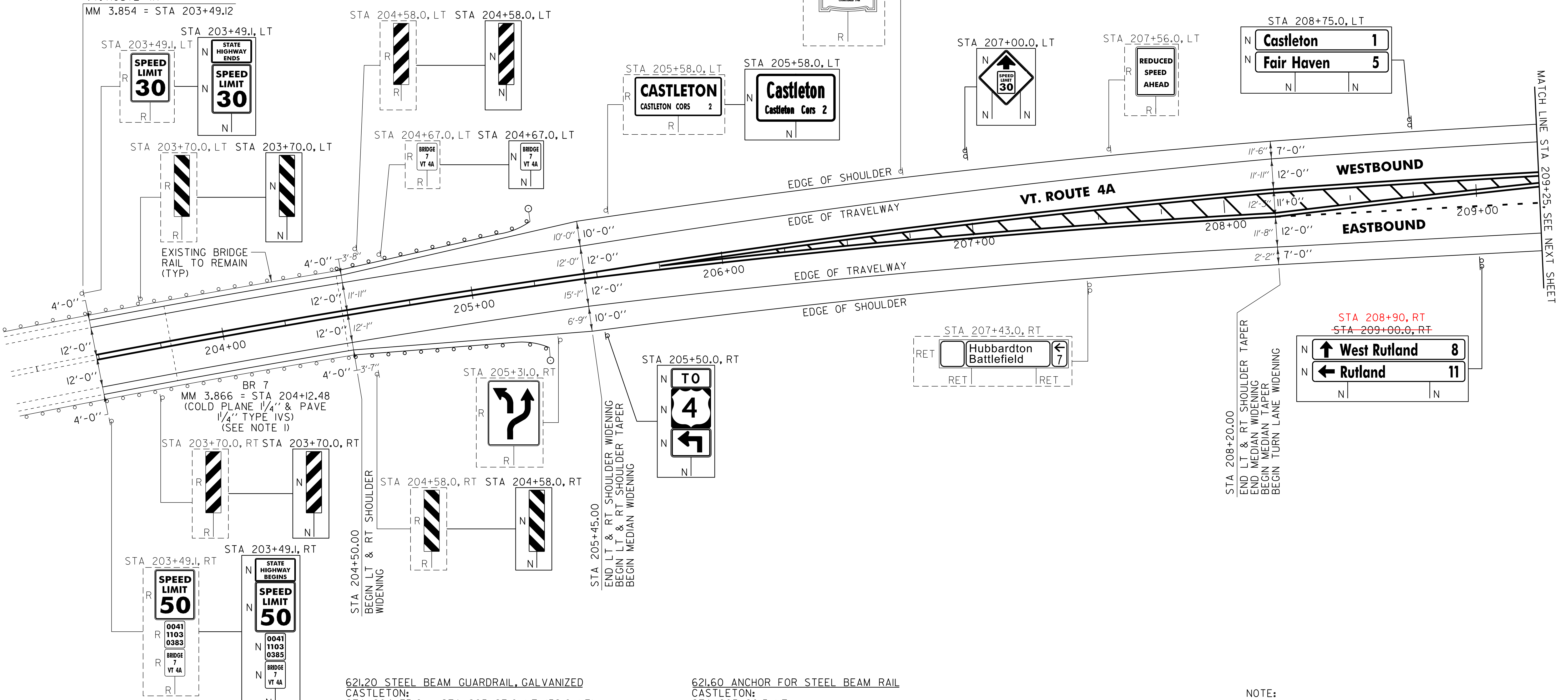
646.602 TEMPORARY 4 INCH WHITE LINE, PAINT  
 (ALL LINES WILL INCLUDE EDGE LINE BREAKS AND  
 RADIUS FOR TOWN HIGHWAYS)  
 CASTLETON:  
 STA 203+49.12 - STA 209+25.00 EDGE LINE LT & RT  
 STA 208+20.00 - STA 209+25.00 DOTTED LANE LINE RT

646.612 TEMPORARY 4 INCH YELLOW LINE, PAINT  
 (ALL LINES WILL INCLUDE C/L BREAKS FOR  
 TOWN HIGHWAYS) S=SOLID, D=DASHED  
 CASTLETON:  
 STA 203+49.12 - STA 205+45.00 LT & RT  
 STA 205+45.00 - STA 209+25.00 DOUBLE SOLID MEDIAN LT & RT

646.452 DURABLE 8 INCH YELLOW LINE, THERMOPLASTIC OR  
 646.453 DURABLE 8 INCH WYELLOW LINE, EPOXY PAINT OR  
 646.454 DURABLE 8 INCH YELLOW LINE, POLYUREA  
 CASTLETON:  
 STA 205+45.00 - STA 209+25.00 MEDIAN HATCHING LT & RT

675.50 REMOVING SIGNS  
 AS SHOWN - 13

BEGIN STP 2705(I)  
 CASTLETON  
 VT. ROUTE 4A  
 MM 3.854 = STA 203+49.12



621.20 STEEL BEAM GUARDRAIL, GALVANIZED  
 CASTLETON:  
 STA 204+75.0 - STA 205+27.0 LT (52.0 LF)  
 STA 204+75.0 - STA 205+27.0 RT (52.0 LF)

621.21HD STEEL BEAM GUARDRAIL, GALVANIZED  
 CASTLETON:  
 STA 204+50.0 - STA 204+75.0 LT (32.5 LF)  
 STA 204+50.0 - STA 204+75.0 RT (32.5 LF)

621.53 TERMINAL CONNECTOR FOR STEEL BEAM GUARDRAIL  
 CASTLETON:  
 STA 204+48.0 - STA 204+50.0 LT  
 STA 204+48.0 - STA 204+50.0 RT

621.60 ANCHOR FOR STEEL BEAM RAIL  
 CASTLETON:  
 STA 205+20.5 LT  
 STA 205+20.5 RT

621.80 REMOVAL AND DISPOSAL OF GUARDRAIL  
 CASTLETON:  
 STA 204+49.0 - STA 205+19.0 LT (70.0 LF)  
 STA 204+49.0 - STA 205+24.0 RT (75.0 LF)

676.10 DELINEATOR WITH STEEL POST  
 CASTLETON:  
 STA 205+27.0 LT  
 STA 205+27.0 RT

**SIGN LEGEND**  
 R = REMOVE  
 S = SALVAGE  
 N = NEW  
 RET = RETAIN  
 B-B = BACK TO BACK  
 EXISTING = - - - - -  
 NEW = \_\_\_\_\_  
 R = RETURN TO TOWN  
 OF CASTLETON

**NOT TO SCALE**

**PROJECT LAYOUT SHEET #1**

NOTE:  
 I. SEE SHEET 82 FOR BR 7 DETAILS.

PROJECT NAME: CASTLETON - WEST RUTLAND	FILE NAME: p07cl68.dgn	PLOT DATE: 04-JUN-2013 09:2
PROJECT NUMBER: STP 2705(I)	PROJECT LEADER: D.E.G.	DRAWN BY: W.G.P.
	DESIGNED BY: M.J.M.	CHECKED BY: D.E.G.
	IPARM FILE: p07cl68I01.i	SHEET 22 OF 152