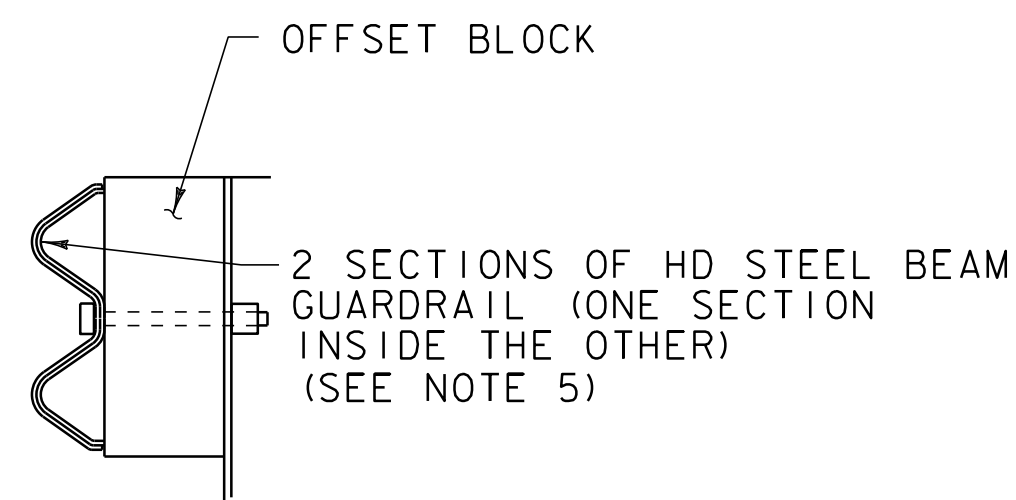
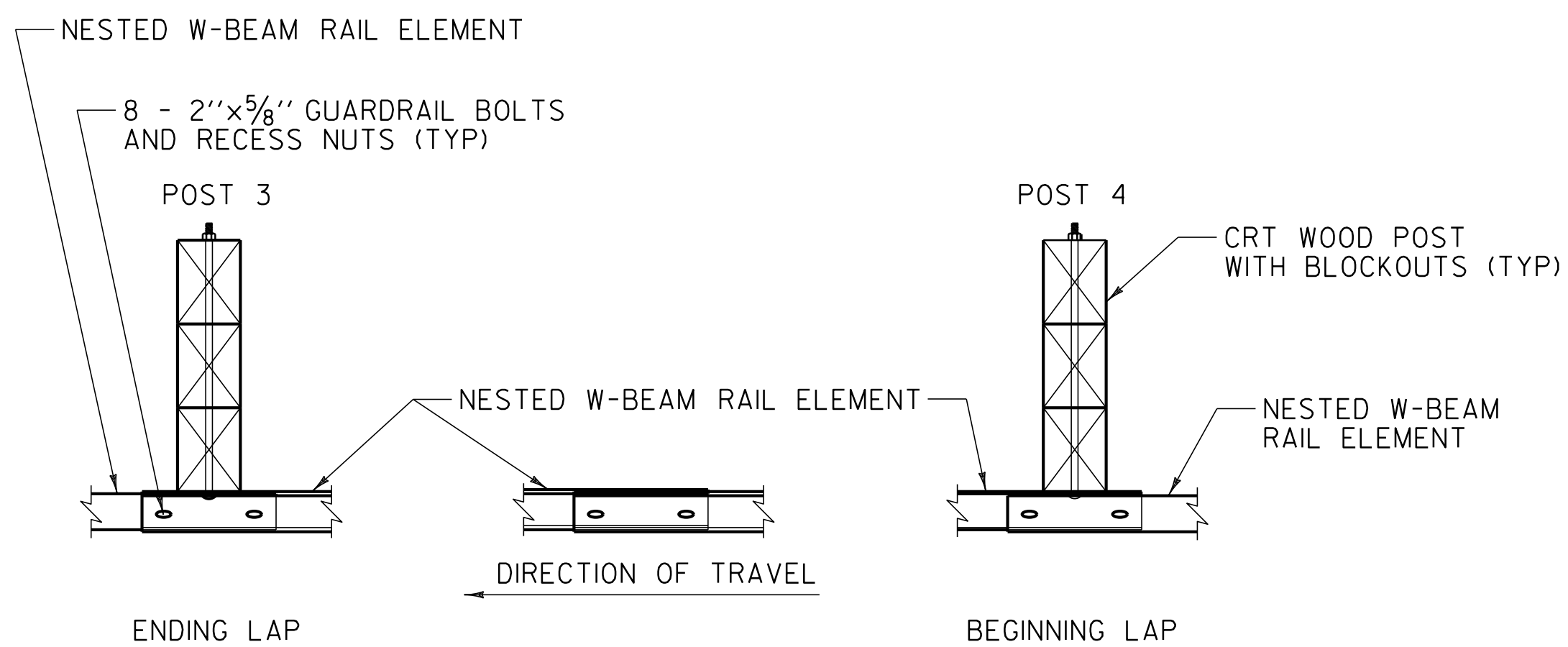


STEEL BEAM GUARDRAIL AT LARGE CULVERT DETAIL ELEVATION

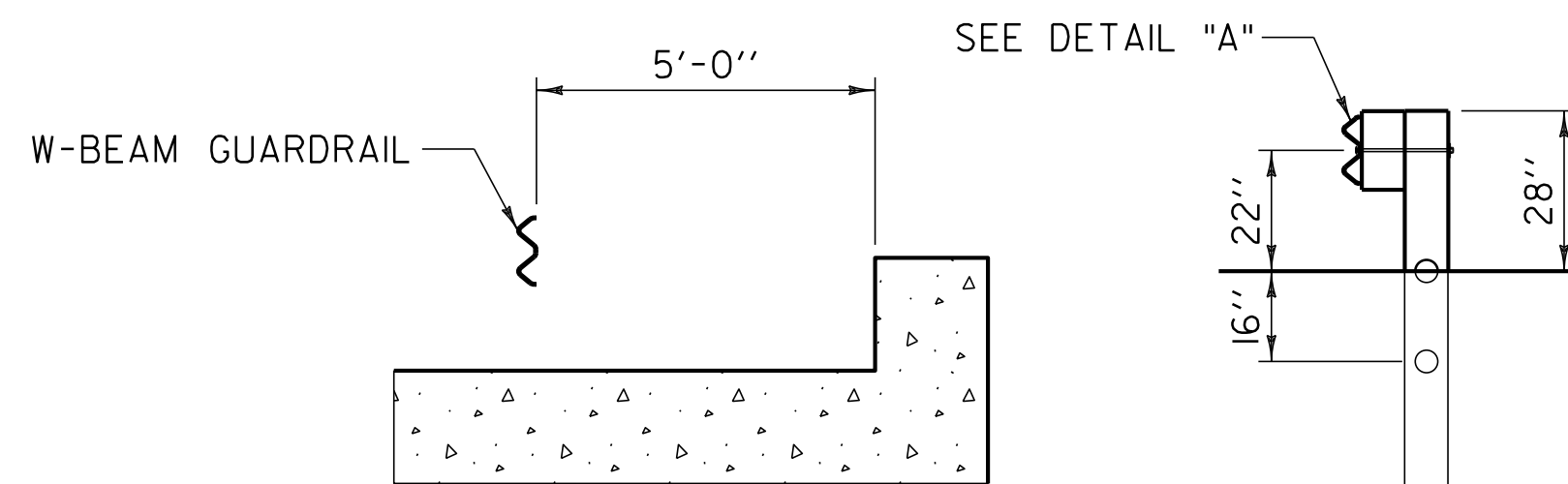
STP 2705(I):
 VT. ROUTE 4A CASTLETON STA 263+72.3 TO STA 264+59.8 RT (87.5 LF)
 VT. ROUTE 4A CASTLETON STA 263+72.3 TO STA 264+59.8 LT (87.5 LF)
 VT. ROUTE 4A IRA STA 50+20.3 TO STA 51+07.8 RT (87.5 LF)
 VT. ROUTE 4A IRA STA 50+20.3 TO STA 51+07.8 LT (87.5 LF)
 VT. ROUTE 4A WEST RUTLAND STA 66+08.8 TO STA 66+93.3 RT (84.5 LF)



DETAIL A



INTERMEDIATE LAP WITHOUT POST



SECTION A-A
(SEE NOTE 3)

SECTION B-B
(SEE NOTE 2)

DOUBLE-NESTED STEEL BEAM GUARDRAIL SYSTEM

NOTES:

- 25'-0" RAIL LENGTHS MAY BE USED TO ELIMINATE THE INTERMEDIATE LAP WITHOUT A POST. DO NOT PLACE A LAP WITHOUT A POST UNLESS NEEDED DUE TO LENGTH OF GAP.
- POSTS 1 THRU 6 ARE CRT POSTS WITH TWO BLOCKOUTS. SEE SECTION B-B FOR DETAILS.
- INSTALL THE BACK FACE OF THE NESTED GUARDRAIL A MINIMUM OF 5'-0" FROM THE FACE OF THE CURB-LIKE HEADWALL.
- SEE STANDARD G-IFOR STEEL BEAM GUARDRAIL DETAILS.
- THIS WORK SHALL BE PAID UNDER ITEM 621.216 HD STEEL BEAM GUARDRAIL, GALVANIZED/NESTED OR ITEM 621.217 HD STEEL BEAM GUARDRAIL, GALVANIZED/NESTED W/8 FEET POSTS AT A PAY FACTOR OF 1.0 AS DIRECTED BY THE RESIDENT ENGINEER.
- THIS DETAIL TO BE USED AS INDICATED ON THE ITEM DETAIL SUMMARY SHEET AT THE STATIONS INDICATED ABOVE OR AS DIRECTED BY THE RESIDENT ENGINEER.

NOT TO SCALE

| | | | |
|---|--|------------------------|-----------------------------|
| COMPOSITE MISCELLANEOUS DETAILS SHEET #2 | PROJECT NAME: CASTLETON - WEST RUTLAND & CASTLETON | FILE NAME: p07cl68.dgn | PLOT DATE: 04-JUN-2013 09:2 |
| | PROJECT NUMBER: STP 2705(I), STP 2908(I) & STP 2909(I) | PROJECT LEADER: D.E.G. | DRAWN BY: W.G.P. |
| | DESIGNED BY: M.J.M. | CHECKED BY: D.E.G. | |
| | IPARM FILE: p07cl68cmd2.i | | SHEET 9 OF 152 |