

646.602 TEMPORARY 4" WHITE LINE, PAINT
 646.402 DURABLE 4" WHITE LINE, THERMOPLASTIC
 B 23+50 TO B 33+50 SOLID LT
 B 23+50 TO B 33+50 SOLID RT

646.612 TEMPORARY 4" YELLOW LINE, PAINT
 646.412 DURABLE 4" YELLOW LINE, THERMOPLASTIC
 B 23+50 TO B 33+50 SOLID LT

~~621.20 STEEL BEAM GUARDRAIL, GALVANIZED~~
~~B 29+93 TO B 30+43 RT~~

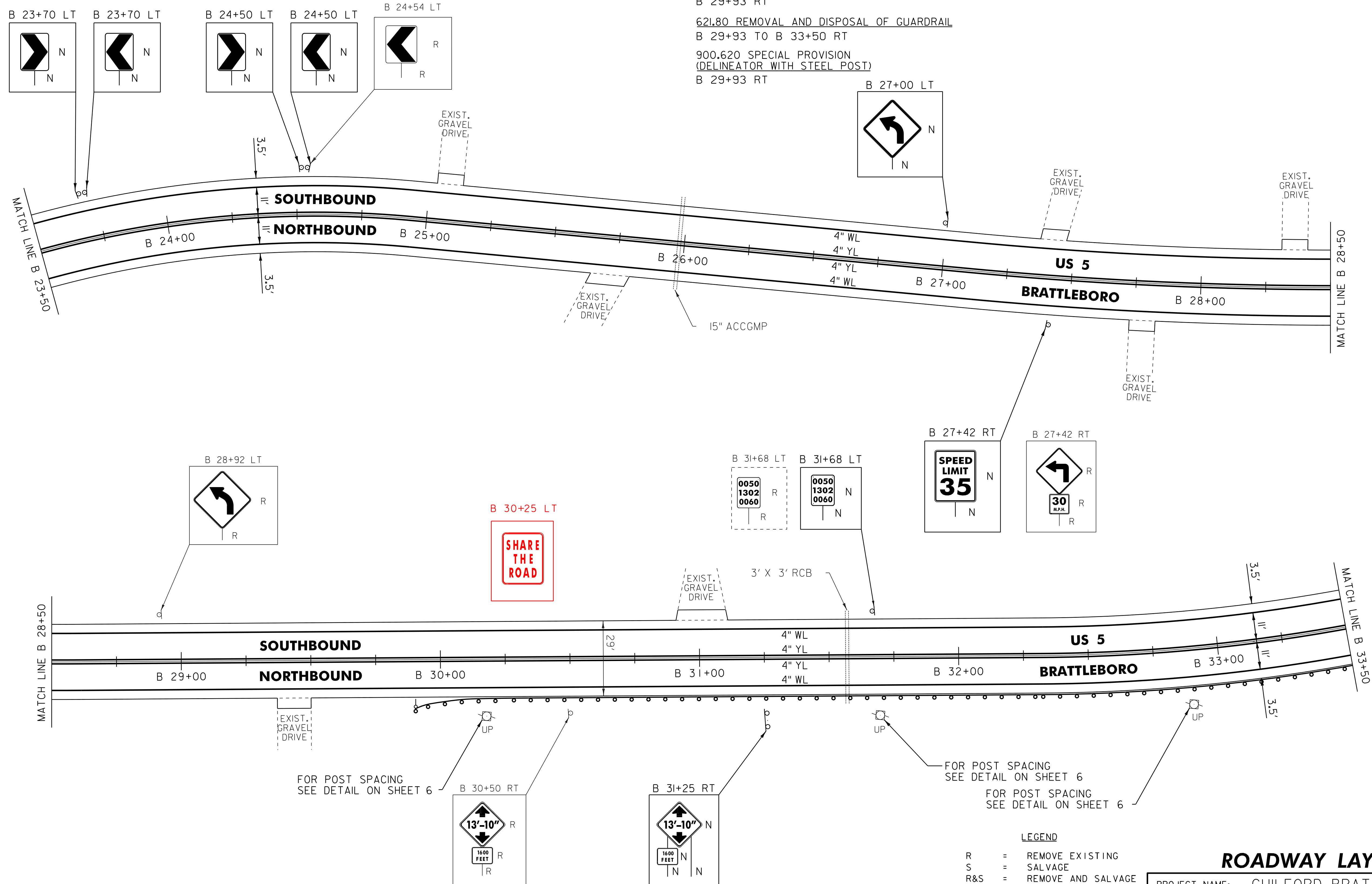
675.50 REMOVING SIGNS
 AS SHOWN - 7

621.205 STEEL BEAM GUARDRAIL
 GALVANIZED W/8' POSTS
 B 30+43 TO B 33+50 RT
 29+93

621.60 ANCHOR FOR STEEL BEAM RAIL
 B 29+93 RT

621.80 REMOVAL AND DISPOSAL OF GUARDRAIL
 B 29+93 TO B 33+50 RT

900.620 SPECIAL PROVISION
 (DELINEATOR WITH STEEL POST)
 B 29+93 RT



NOT TO SCALE

- LEGEND**
- R = REMOVE EXISTING
 - S = SALVAGE
 - R&S = REMOVE AND SALVAGE
 - N = NEW
 - RET = RETAIN
 - B-B = BACK TO BACK
 - = EXISTING GUARDRAIL
 - = PROPOSED GUARDRAIL
 - YL = YELLOW LINE
 - WL = WHITE LINE
 - = DELINEATOR

ROADWAY LAYOUT 47

PROJECT NAME: GUILFORD-BRATTLEBORO
 PROJECT NUMBER: STP 2707(1)

FILE NAME: /pave/07cl66/pcl66
 PROJECT LEADER: PTS
 DESIGNED BY: NLL
 IPARM FILE NAME: 07Cl66.66

PLOT DATE: 29-JAN-2013 11:42
 DRAWN BY: WWG
 CHECKED BY: NLL/PTS
 SHEET 66 OF 97