

646.602 TEMPORARY 4" WHITE LINE, PAINT
 646.402 DURABLE 4" WHITE LINE, THERMOPLASTIC
 339+00 TO 349+00 SOLID LT
 339+00 TO 349+00 SOLID RT

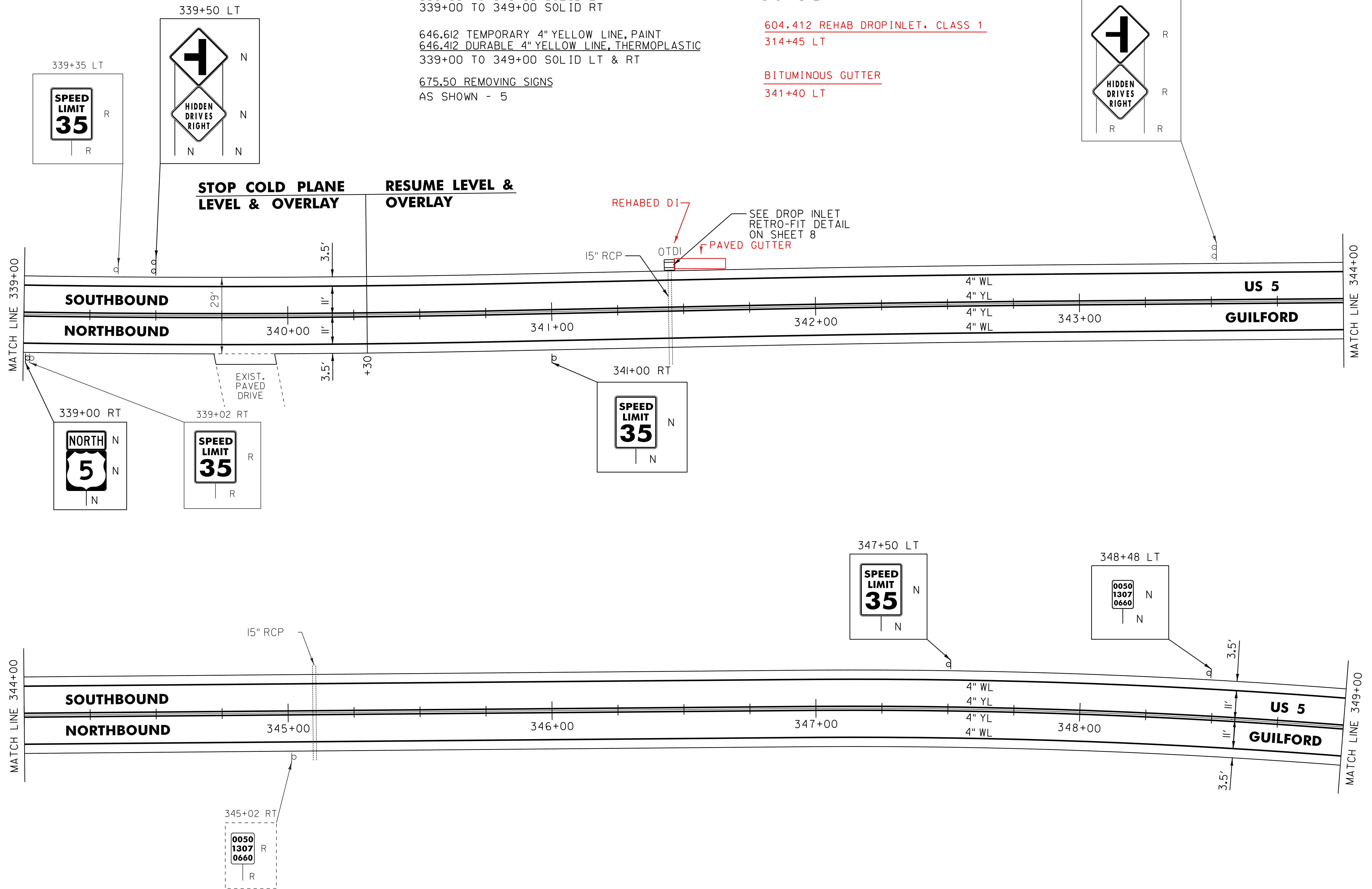
646.612 TEMPORARY 4" YELLOW LINE, PAINT
 646.412 DURABLE 4" YELLOW LINE, THERMOPLASTIC
 339+00 TO 349+00 SOLID LT & RT

675.50 REMOVING SIGNS
 AS SHOWN - 5

900.620 SPECIAL PROVISION
 (CAST IRON GRATE WITH FRAME, CONCAVE)
 341+45 LT

604.412 REHAB DROPINLET, CLASS 1
 314+45 LT

BITUMINOUS GUTTER
 341+40 LT



NOT TO SCALE

- LEGEND**
- R = REMOVE EXISTING
 - S = SALVAGE
 - R&S = REMOVE AND SALVAGE
 - N = NEW
 - RET = RETAIN
 - B-B = BACK TO BACK
 - ⊕ = EXISTING GUARDRAIL
 - ⊕ = PROPOSED GUARDRAIL
 - YL = YELLOW LINE
 - WL = WHITE LINE
 - ⊙ = DELINEATOR

ROADWAY LAYOUT 42

PROJECT NAME: GUILFORD-BRATTLEBORO
 PROJECT NUMBER: STP 2707(1)

FILE NAME: /pave/07cl66/pcl66
 PROJECT LEADER: PTS
 DESIGNED BY: NLL
 IPARM FILE NAME: 07Cl66.61

PLOT DATE: 29-JAN-2013 11:42
 DRAWN BY: WWG
 CHECKED BY: NLL/PTS
 SHEET 61 OF 97