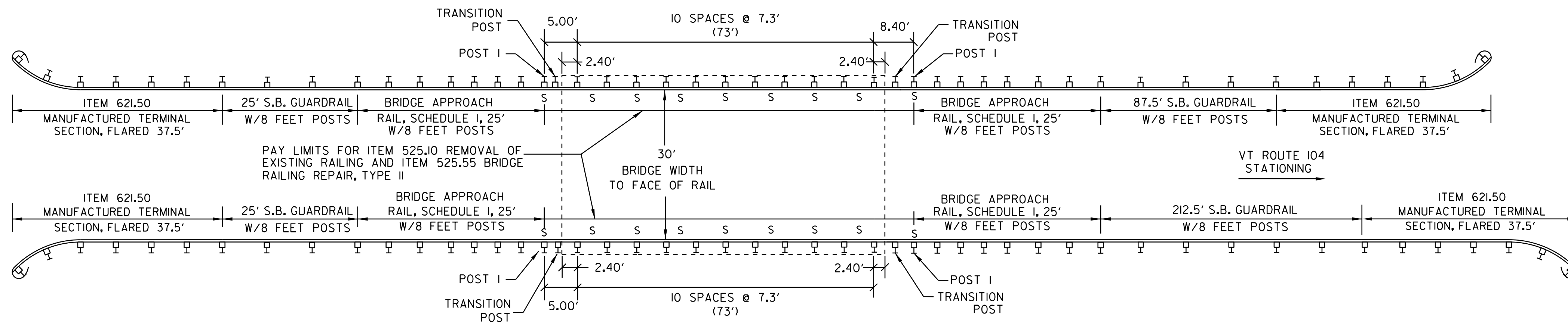


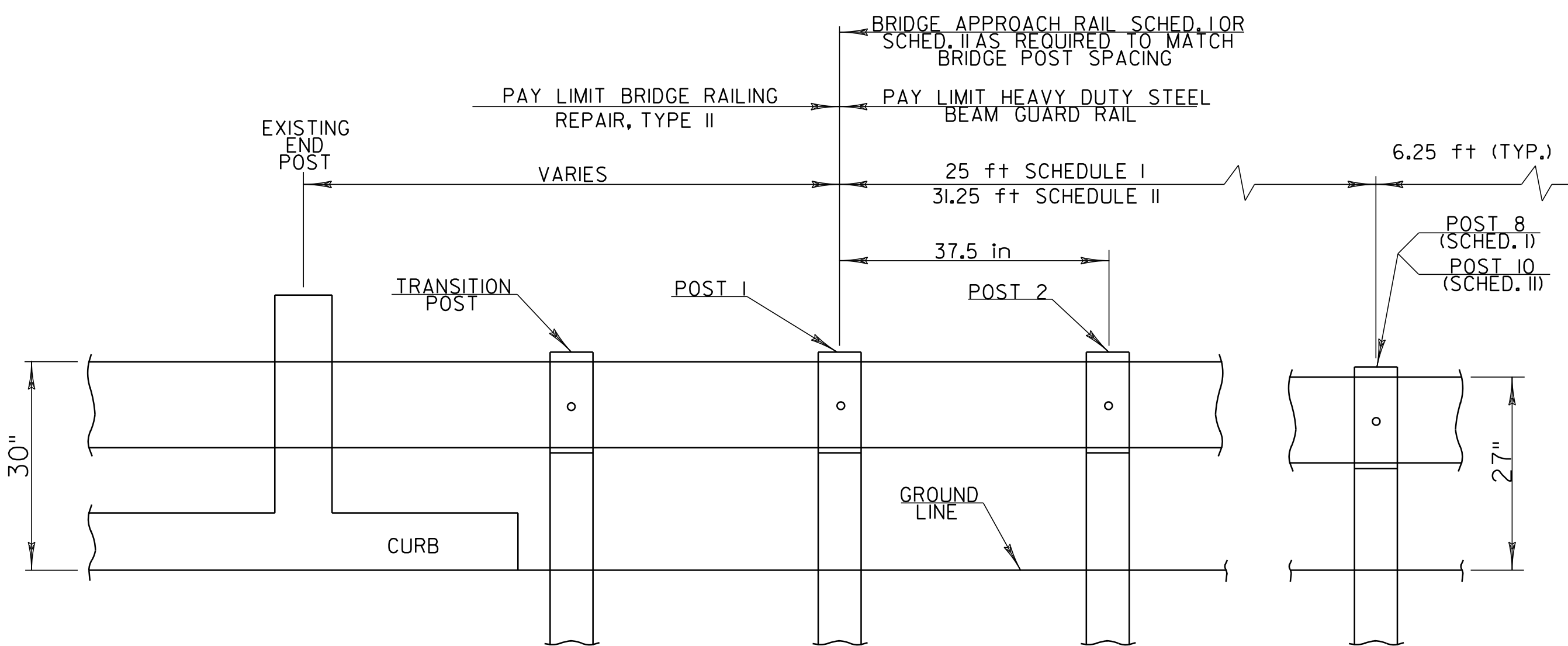
BRIDGE APPROACH RAILING

WHEN A RAIL PANEL SPLICE OCCURS AT POST NO. 1 USE SCHEDULE I FOR APPROACH RAILING. WHEN A RAIL PANEL SPLICE OCCURS AT BRIDGE END POST USE SCHEDULE II FOR APPROACH RAILING.

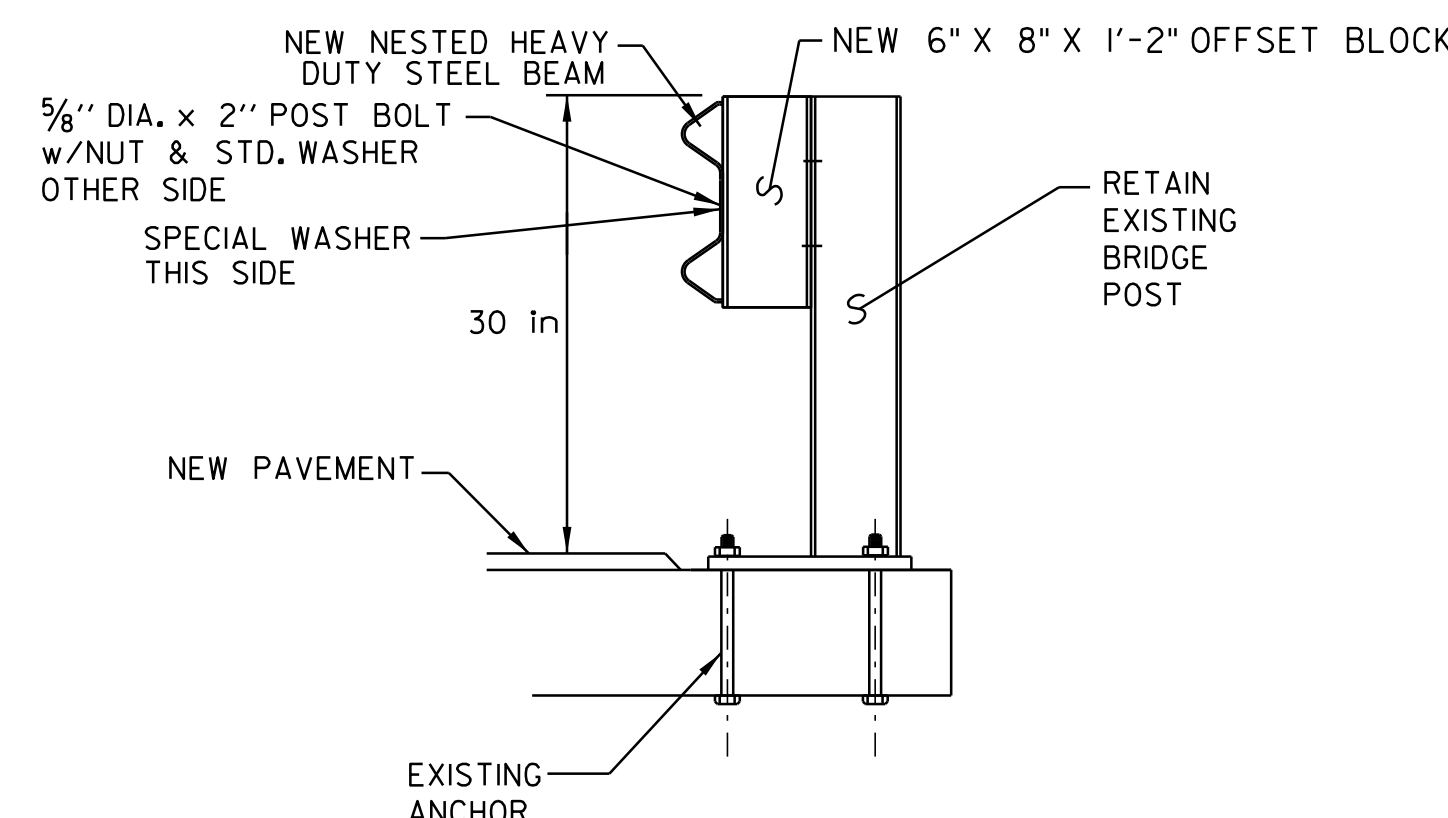


SCHEDULE I		
POST NO.	SPACING	PAYMENT FACTOR
1	3'-1/2"	1.4 x 12.5 ft
2	3'-1/2"	
3	3'-1/2"	
4	3'-1/2"	1.2 x 12.5 ft
5	4'-2"	
6	4'-2"	
7	4'-2"	1.0 (TYP.)
8	4'-2"	
9	6'-3" (TYP.)	

**FAIRFAX BRIDGE #3
STA. 31+59 - MM 0.598**



BRIDGE APPROACH RAILING

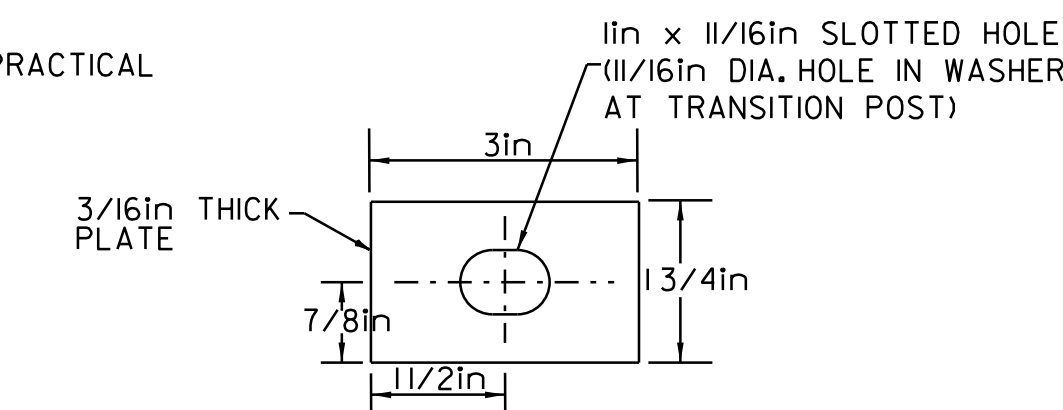


POST DETAIL

NOTES:

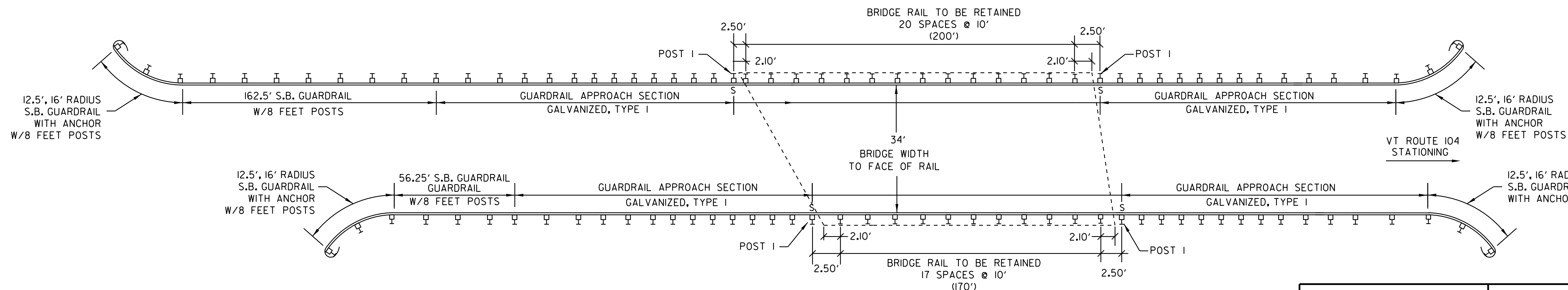
- BRIDGE RAIL SHALL BE NESTED HEAVY DUTY STEEL BEAM RAIL, ITEM 525.55 "BRIDGE RAILING REPAIR, TYPE II".
- BRIDGE APPROACH RAIL HEIGHT SHALL BE TRANSITIONED TO NORMAL ROADWAY RAIL HEIGHT IN 25 FEET.
- APPROACH RAILING SHALL BE HEAVY DUTY STEEL BEAM FOR LENGTHS OF 25 FEET OR 31.25 FEET DETERMINED BY THE SCHEDULE. SEE BRIDGE DETAILS.
- FOR BRIDGE RAILING, THE TRANSITION POST SHALL HAVE AN OFFSET BLOCK AND BE LOCATED AS CLOSE AS PRACTICAL TO THE MID-POINT BETWEEN THE BRIDGE END POST AND APPROACH RAIL POST 1.
- SPLICES SHALL LAP IN DIRECTION OF TRAFFIC FLOW.

SCHEDULE II		
POST NO.	SPACING	PAYMENT FACTOR
1	3'-1/2"	1.4 x 18.75 ft
2	3'-1/2"	
3	3'-1/2"	
4	3'-1/2"	1.2 x 12.5 ft
5	3'-1/2"	
6	3'-1/2"	
7	4'-2"	1.0 (TYP.)
8	4'-2"	
9	4'-2"	
10	4'-2"	1.0 (TYP.)
11	6'-3" (TYP.)	



SPECIAL WASHER DETAIL

(MATERIAL SHALL MEET AASHTO M270M/M270 GRADE 345)



**FAIRFAX BRIDGE #9
STA. 270+03 - MM 5.114**

**BRIDGE
DETAIL
SHEET**

NOT TO SCALE

PROJECT NAME:	CAMBRIDGE-FAIRFAX
PROJECT NUMBER:	STP 2713(I)
FILE NAME:	p07B182.dgn
PROJECT LEADER:	CDL
DESIGNED BY:	RHB
PLOT FILE:	p07B182_7.i
PLOT DATE:	29-DEC-2014 13:45
DRAWN BY:	SJL
CHECKED BY:	EPD
SHEET	7 OF 36