

NOTES:
 1. SEE EPSC DETAIL SHEETS FOR CONSTRUCTION DETAILS.

2. ALL AREAS OF DISTURBANCE MUST HAVE TEMPORARY OR FINAL STABILIZATION WITHIN 7 DAYS OF THE INITIAL DISTURBANCE. AFTER THIS TIME, ANY DISTURBANCE IN THE AREA MUST BE STABILIZED AT THE END OF EACH WORK DAY. THE FOLLOWING EXCEPTIONS APPLY:
 I) STABILIZATION IS NOT REQUIRED IF WORK IS TO CONTINUE IN THE AREA WITHIN THE NEXT 24 HOURS AND THERE IS NO PRECIPITATION FORECAST FOR THE NEXT 24 HOURS.
 II) STABILIZATION IS NOT REQUIRED IF THE WORK IS OCCURRING IN A SELF CONTAINED EXCAVATION WITH A DEPTH OF 2 FEET OR GREATER.

3. THE CONTRACTOR SHALL MINIMIZE ANY SOIL DISTURBANCES BETWEEN OCTOBER 15 THROUGH APRIL 15. TO ASSURE A VIGOROUS CATCH OF VEGETATIVE COVER, SEEDING AND MULCHING SHALL BE COMPLETED BY SEPTEMBER 15 TO THE EXTENT POSSIBLE, OR AS DIRECTED BY THE ENGINEER.

STONE FILL, TYPE I
 32+94.7 RT - 33+51.6 RT

GEOTEXTILE FOR FILTER CURTAIN
 9+96.5 LT - 9+96.5 RT

SEED
 RURAL AREA MIX:
 9+96.5 LT-RT - 11+46.3 LT-RT
 11+95.4 LT-RT - 12+25.4 LT-RT
 12+24.6 LT - 12+53.6 LT

URBAN AREA MIX:
 14+01.4 LT-RT - 14+82.6 LT-RT
 BEGIN APPROACH
 STA. 32+22.66

SEED, WINTER RYE
 9+96.5 LT-RT - 11+46.3 LT-RT
 11+95.4 LT-RT - 12+25.4 LT-RT
 14+01.4 LT-RT - 14+82.6 LT-RT

FERTILIZER
 9+96.5 LT-RT - 11+46.3 LT-RT
 11+95.4 LT-RT - 12+25.4 LT-RT
 12+24.6 LT - 12+53.6 LT
 14+01.4 LT-RT - 14+82.6 LT-RT

AGRICULTURAL LIMESTONE
 9+96.5 LT-RT - 11+46.3 LT-RT
 11+95.4 LT-RT - 12+25.4 LT-RT
 12+24.6 LT - 12+53.6 LT
 14+01.4 LT-RT - 14+82.6 LT-RT

HAY MULCH
 9+96.5 LT-RT - 11+46.3 LT-RT
 11+95.4 LT-RT - 12+25.4 LT-RT
 12+24.6 LT - 12+53.6 LT
 14+01.4 LT-RT - 14+82.6 LT-RT

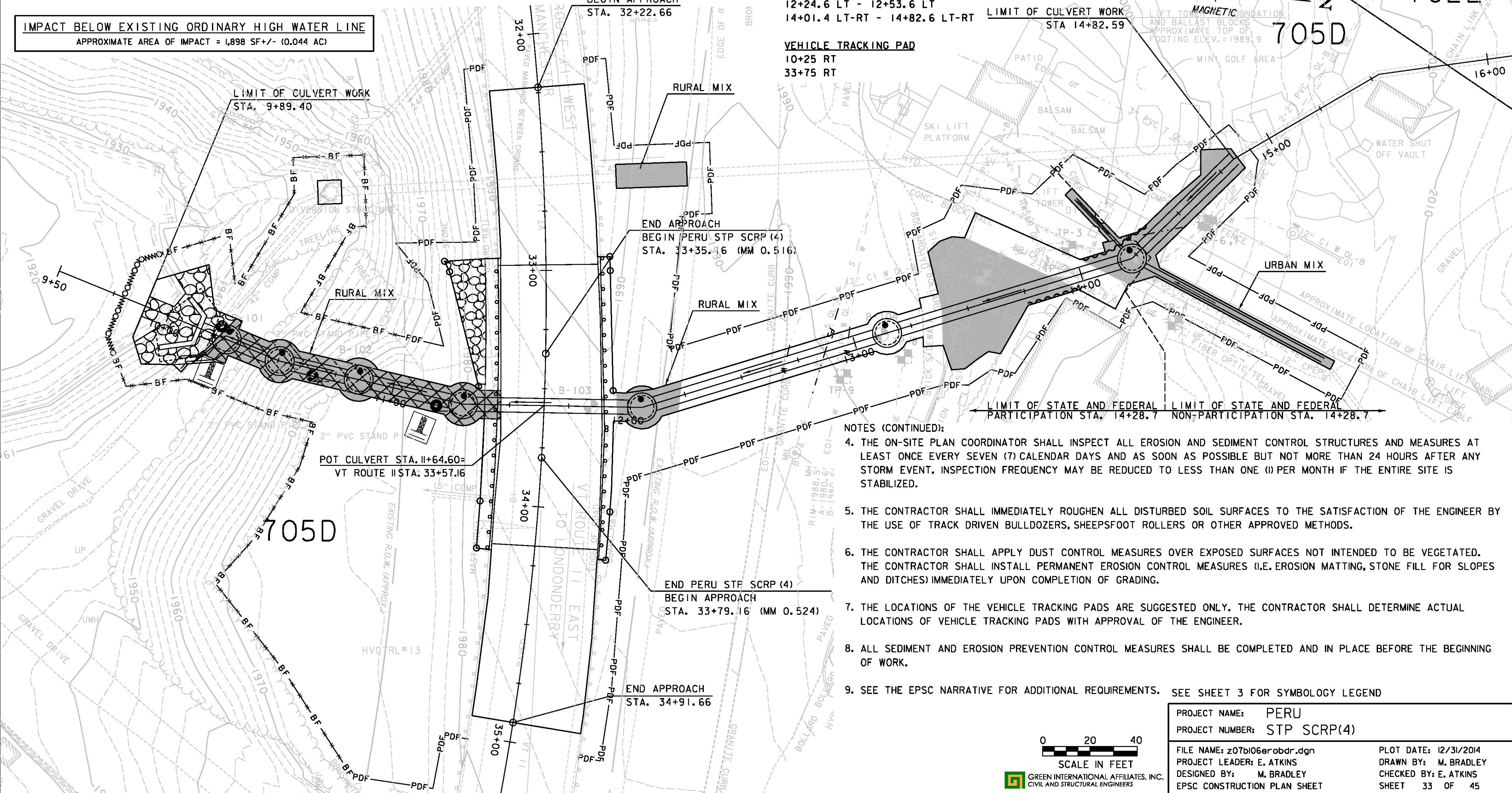
TOP SOIL
 9+96.5 LT-RT - 11+46.3 LT-RT
 11+95.4 LT-RT - 12+25.4 LT-RT
 12+24.1 LT - 12+53.6 LT
 14+01.4 LT-RT - 14+82.6 LT-RT

TEMPORARY EROSION MATTING
 10+08.8 LT-RT - 11+46.5 LT-RT

BARRIER FENCE
 9+89.0 LT - 11+00.0 LT
 9+85.2 RT - 11+20.4 RT

PROJECT DEMARCATION FENCE
 11+00.0 LT - 11+07.7 LT
 11+77.9 LT - 14+84.9 LT
 11+20.4 RT - 11+35.3 RT
 11+81.2 RT - 14+84.9 RT

IMPACT BELOW EXISTING ORDINARY HIGH WATER LINE
 APPROXIMATE AREA OF IMPACT = 1,898 SF +/- (0.044 AC)



- NOTES (CONTINUED):
4. THE ON-SITE PLAN COORDINATOR SHALL INSPECT ALL EROSION AND SEDIMENT CONTROL STRUCTURES AND MEASURES AT LEAST ONCE EVERY SEVEN (7) CALENDAR DAYS AND AS SOON AS POSSIBLE BUT NOT MORE THAN 24 HOURS AFTER ANY STORM EVENT. INSPECTION FREQUENCY MAY BE REDUCED TO LESS THAN ONE (1) PER MONTH IF THE ENTIRE SITE IS STABILIZED.
 5. THE CONTRACTOR SHALL IMMEDIATELY ROUGHEN ALL DISTURBED SOIL SURFACES TO THE SATISFACTION OF THE ENGINEER BY THE USE OF TRACK DRIVEN BULLDOZERS, SHEEPSFOOT ROLLERS OR OTHER APPROVED METHODS.
 6. THE CONTRACTOR SHALL APPLY DUST CONTROL MEASURES OVER EXPOSED SURFACES NOT INTENDED TO BE VEGETATED. THE CONTRACTOR SHALL INSTALL PERMANENT EROSION CONTROL MEASURES (I.E. EROSION MATTING, STONE FILL FOR SLOPES AND DITCHES) IMMEDIATELY UPON COMPLETION OF GRADING.
 7. THE LOCATIONS OF THE VEHICLE TRACKING PADS ARE SUGGESTED ONLY. THE CONTRACTOR SHALL DETERMINE ACTUAL LOCATIONS OF VEHICLE TRACKING PADS WITH APPROVAL OF THE ENGINEER.
 8. ALL SEDIMENT AND EROSION PREVENTION CONTROL MEASURES SHALL BE COMPLETED AND IN PLACE BEFORE THE BEGINNING OF WORK.
 9. SEE THE EPSC NARRATIVE FOR ADDITIONAL REQUIREMENTS. SEE SHEET 3 FOR SYMBOLOGY LEGEND

PROJECT NAME: PERU
 PROJECT NUMBER: STP SCR(4)
 FILE NAME: z07b106erobdr.dgn
 PROJECT LEADER: E. ATKINS
 DESIGNED BY: M. BRADLEY
 EPSC CONSTRUCTION PLAN SHEET

PLOT DATE: 12/31/2014
 DRAWN BY: M. BRADLEY
 CHECKED BY: E. ATKINS
 SHEET 33 OF 45

