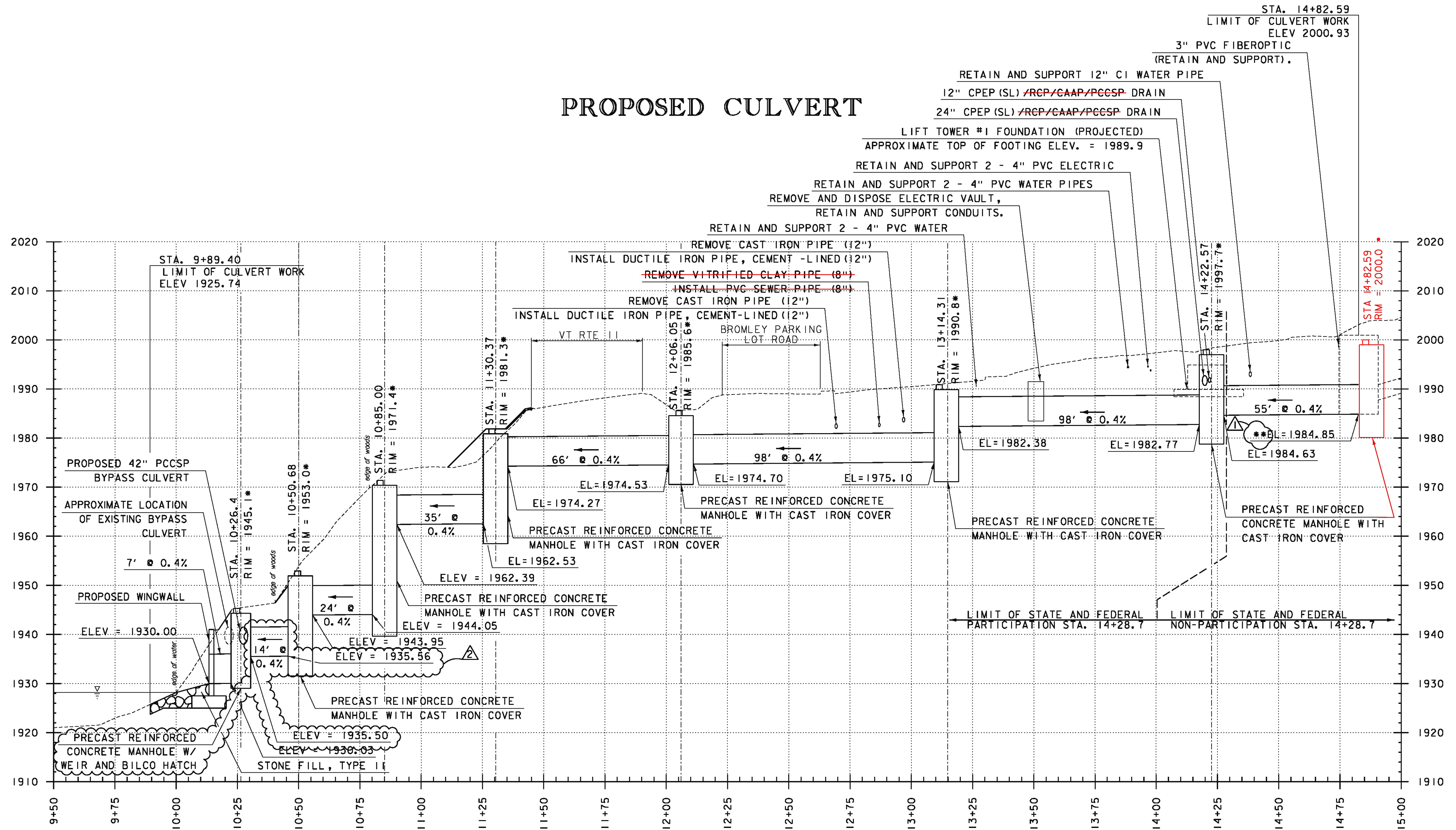


PROPOSED CULVERT



REVISION	BY	DATE
△ SECOND ASTERISK WAS ADDED TO NOTE AND ELEVATION CALLOUT	MAB	2/10/2015
△ PROFILE UPDATED TO REFLECT ADDITION OF BAFFLE W/ WEIR.	MAB	6/8/2015

△ ** PIPE ENTERS STRUCTURE OFF CENTER, PROJECTED ENTRY LOCATION SHOWN

THIS SHEET REPLACES PRECEDING SHEET

*RIM ELEVATIONS ARE APPROXIMATE AND SHALL BE ADJUSTED TO MEET THE GRADE AS NECESSARY. SEE SHEET 8 FOR ADDITIONAL REQUIREMENTS.

MANHOLE STRUCTURES ARE SHOWN PICTORIALLY FOR INFORMATION ONLY. ACTUAL SHAPE AND SIZE TO BE DETERMINED BY THE CONTRACTOR.

GREEN INTERNATIONAL AFFILIATES, INC.
CIVIL AND STRUCTURAL ENGINEERS

PROJECT NAME: PERU
PROJECT NUMBER: STP SCR(4)
FILE NAME: z07bl06xsl.dgn
PROJECT LEADER: E. ATKINS
DESIGNED BY: M. BRADLEY
PROFILE SHEET 1
PLOT DATE: 12/31/2014
DRAWN BY: M. BRADLEY
CHECKED BY: E. ATKINS
SHEET 29 OF 45