

NOTES:

- 1.) UTILITIES CROSSING THE TRENCH SHALL BE SUPPORTED IN PLACE DURING CONSTRUCTION. PAYMENT FOR UTILITY SUPPORT SHALL BE INCIDENTAL TO THE CONTRACT.
- 2.) UTILITIES TO BE REPLACED SHALL BE BYPASSED DURING CONSTRUCTION. BYPASS SHALL BE PAID FOR UNDER ITEMS 628.42, TRANSFER TO NEW SYSTEM, SANITARY SEWER AND 629.42, TRANSFER TO NEW SYSTEM, WATER SYSTEM.
- 3.) AFTER CULVERT INSTALLATION AND BEFORE PLACEMENT OF GRANULAR BACKFILL FOR STRUCTURES, THE CONTRACTOR SHALL INSTALL NEW PIPE IN PLACE OF THE BYPASSED SYSTEM.
- 4.) SEE THE UTILITIES SPECIAL PROVISIONS FOR ADDITIONAL INFORMATION AND REQUIREMENTS.

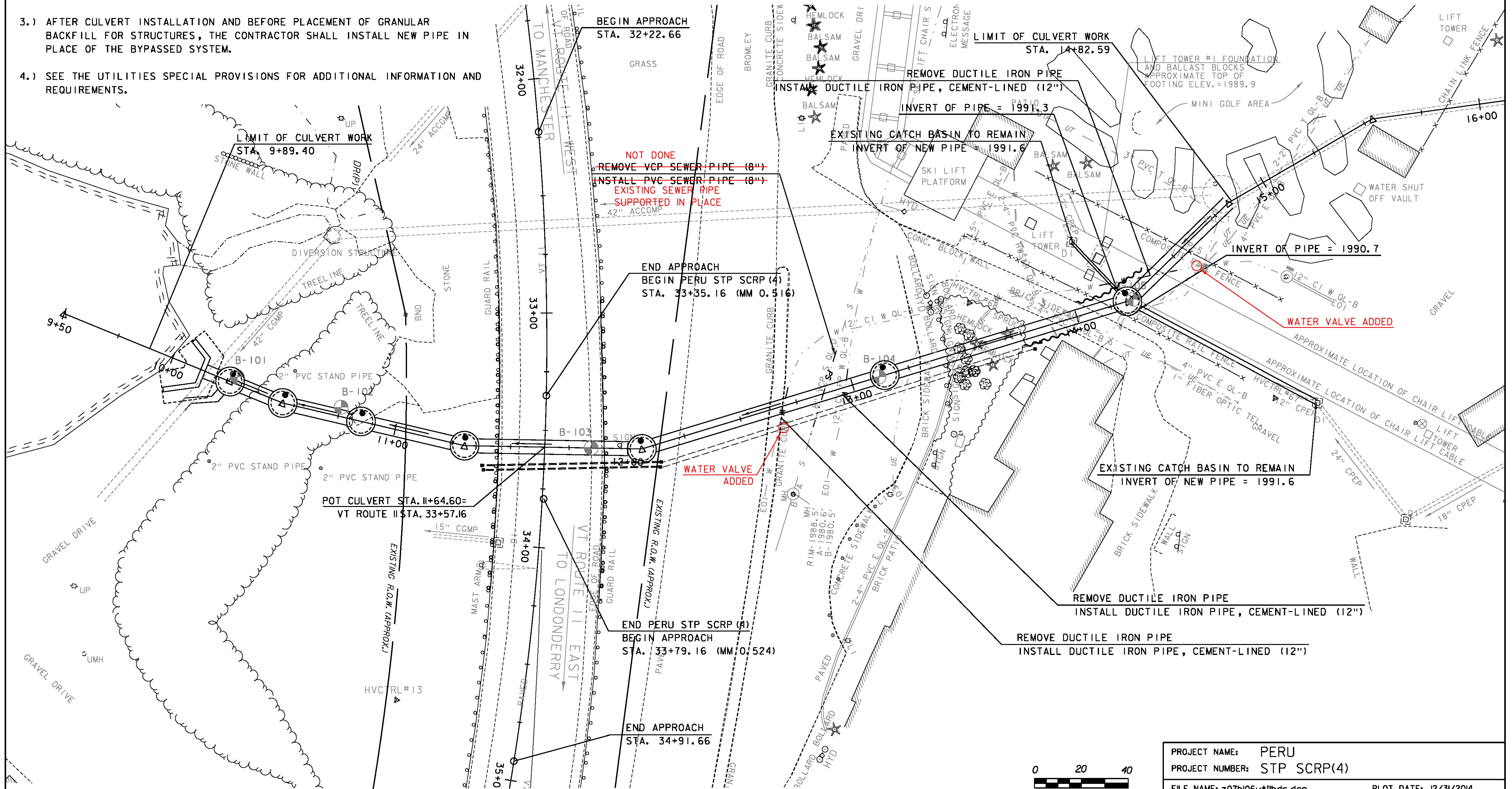
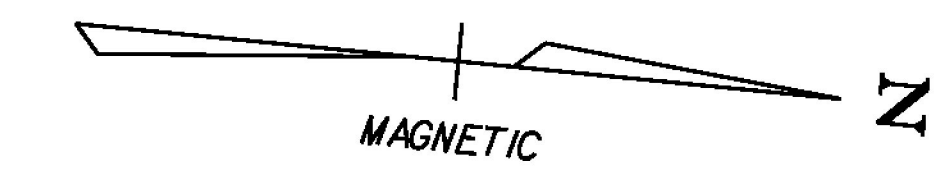
~~PVC SEWER PIPE (8") (PARTICIPATING)~~
~~12+76.2 RT - 12+97.7 LT NOT DONE~~

DUCTILE IRON PIPE, CEMENT-LINED
(12") (PARTICIPATING)
 12+66.4 RT - 12+73.4 LT
 12+95.1 RT - 13+00.0 LT
 14+12.9 LT - 14+47.9 RT

ELECTRICAL CONDUIT (4") (PVC) (NON-PARTICIPATING)
 11+38.6 RT - 12+11.4 RT 73'
 11+39.4 RT - 12+10.3 RT 71'
 12+13.3 RT - 13+81.4 RT 168'
 12+11.8 RT - 13+78.1 RT 166'

PULL BOX, STANDARD (NON-PARTICIPATING)
 11+37.6 RT
 11+38.4 RT
 12+12.4 RT
 12+11.3 RT
 13+82.4 RT
 13+79.1 RT

ELECTRICAL CONDUIT SLEEVE (8") (PVC) (NON-PARTICIPATING)
 11+38.6 RT - 12+11.4 RT 75'
 11+39.4 RT - 12+10.3 RT 74'



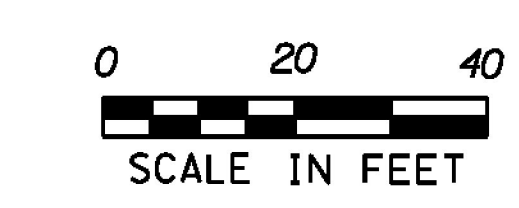
~~NOT DONE~~
~~REMOVE VCP SEWER PIPE (8")~~
~~INSTALL PVC SEWER PIPE (8")~~
 EXISTING SEWER PIPE SUPPORTED IN PLACE

WATER VALVE ADDED

WATER VALVE ADDED

REMOVE DUCTILE IRON PIPE
 INSTALL DUCTILE IRON PIPE, CEMENT-LINED (12")

REMOVE DUCTILE IRON PIPE
 INSTALL DUCTILE IRON PIPE, CEMENT-LINED (12")



PROJECT NAME: PERU
 PROJECT NUMBER: STP SCRP(4)
 FILE NAME: z07b106ut11bdr.dgn
 PROJECT LEADER: E. ATKINS
 DESIGNED BY: M. BRADLEY
 UTILITY PLAN SHEET

PLOT DATE: 12/31/2014
 DRAWN BY: M. BRADLEY
 CHECKED BY: E. ATKINS
 SHEET 28 OF 45

GREEN INTERNATIONAL AFFILIATES, INC.
 CIVIL AND STRUCTURAL ENGINEERS