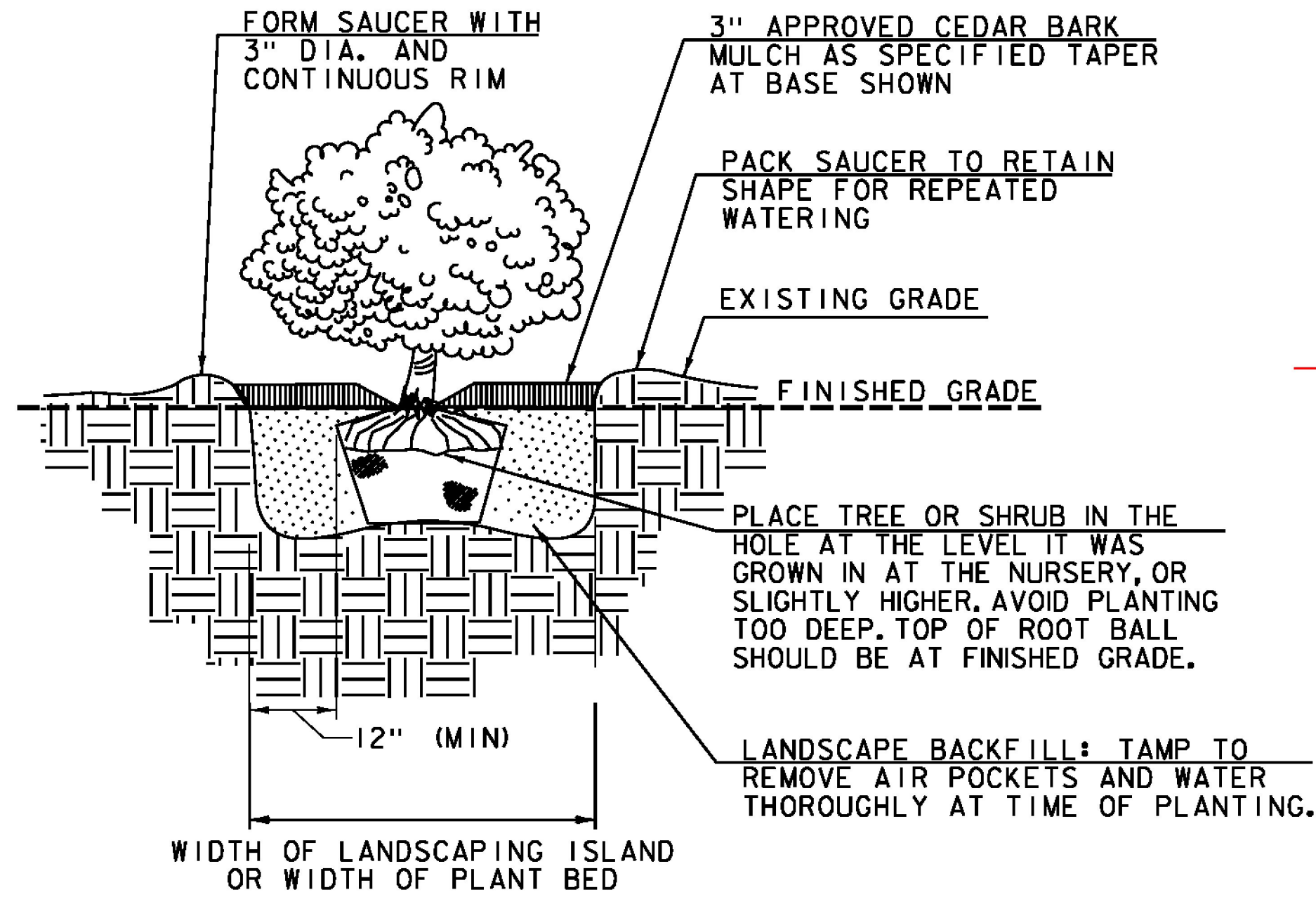


GENERAL LANDSCAPE NOTES:

1. SEE EPSC SHEETS FOR SEEDING FORMULAS, FERTILIZER APPLICATION RATES, MULCH REQUIREMENTS ETC.
2. LANDSCAPE BACKFILL, TRUCK MEASUREMENT BACKFILL WITH PLANTING MIX OF 1/2 SCREENED TOPSOIL, 1/4 COMPOST AND 1/4 NATIVE MATERIAL AS APPROVED BY THE ENGINEER. UNSUITABLE NATIVE MATERIAL SHALL BE REPLACED WITH IMPORTED APPROVED TOPSOIL AS DIRECTED BY ENGINEER.
3. WATERING SHRUBS TO RECEIVE A MINIMUM OF 5 GALLONS AT EACH WATERING, TWICE WEEKLY DURING ESTABLISHMENT PERIOD. TREES TO RECEIVE A MINIMUM OF 10 GALLONS AT EACH WATERING, TWICE WEEKLY DURING ESTABLISHMENT PERIOD. CONTRACTORS SHALL MAINTAIN AND PROVIDE A LOG TO THE RESIDENT ENGINEER SHOWING AMOUNTS AND DATES OF WATERING AND NOTING NATURAL RAINFALL EVENTS. WATERING SCHEDULE MAY BE ADJUSTED AS APPROVED BY THE RESIDENT ENGINEER.
4. BARK MULCH SHALL BE CEDAR AND PROVIDED IN ACCORDANCE WITH SUBSECTION 755.10 (C).
5. PAYMENT FOR CEDAR BARK MULCH, LANDSCAPE STONE, AND LANDSCAPE BOULDERS SHALL BE CONSIDERED INCIDENTAL TO SPECIAL PROVISION (LANDSCAPE AREA RESTORATION).



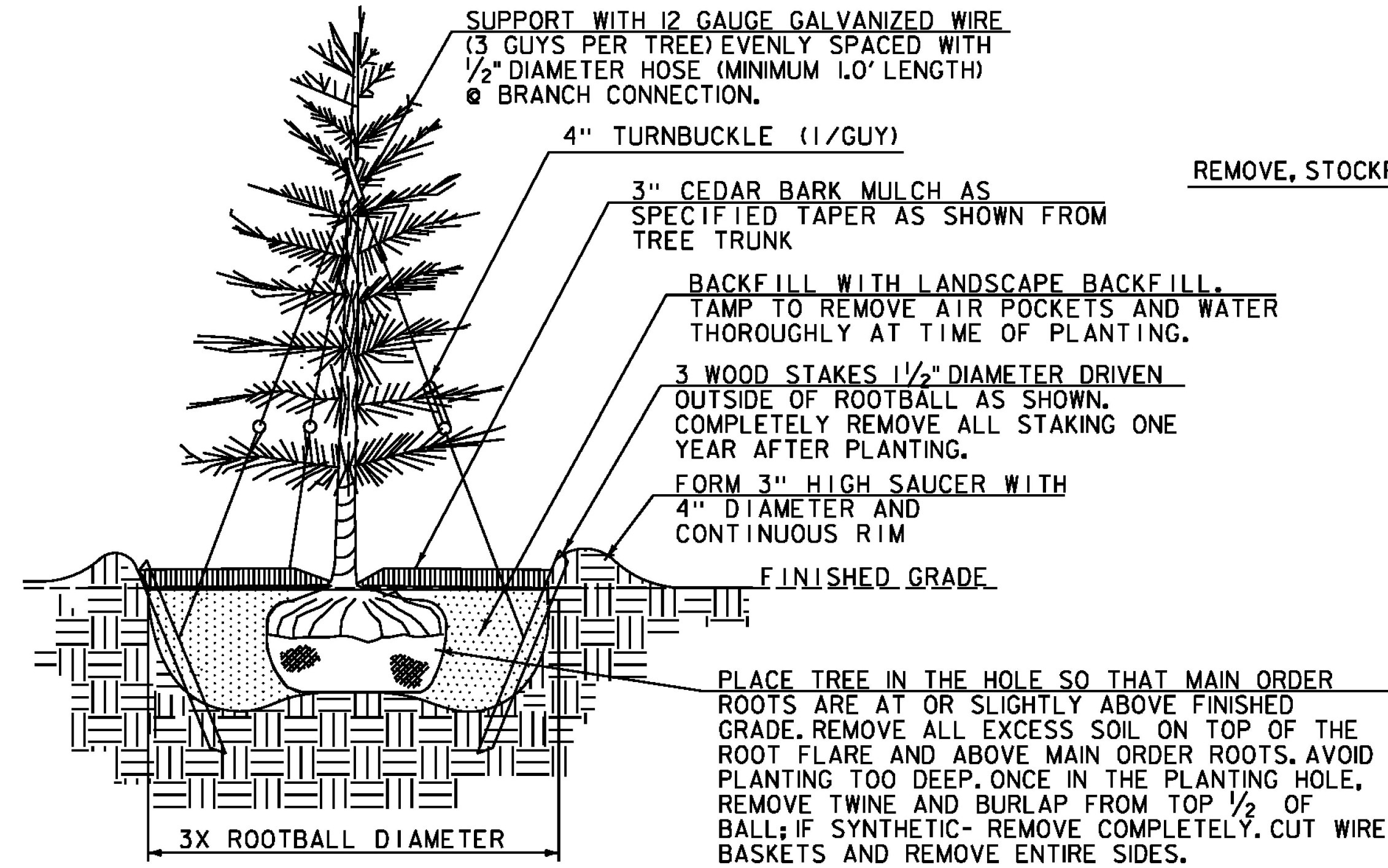
SHRUB PLANTING DETAIL

SCALE: NOT TO SCALE

PLANT LIST

| QTY. | SIZE | COMMON NAME / AREA | BOTANICAL NAME | SPACING/COMMENTS | |
|------------------------|-------------------|---------------------------|----------------------------------|-----------------------|-----------------------|
| EVERGREEN TREES | | | | | |
| 1 | 3 | 7-8 FEET HEIGHT | BALSAM FIR | ABIES BALSAMEA | BALL AND BURLAP (B&B) |
| 9 | 2-2.5 FEET SPREAD | HUMMING BIRD SUMMERSWEET | CLETHRA ALNIFOLIA 'HUMINGBIRD' | CONTAINER (CONT) | |
| 7 | 3-4 FEET HEIGHT | VARIGATED REDTWIG DOGWOOD | CORNUS ALBA 'ARGENTEO-MARGINALA' | BALL AND BURLAP (B&B) | |
| 4 | 2-2.5 FEET SPREAD | SEAGREEN JUNIPER | JUNIPERUS CHINENSIS 'SEA GREEN' | CONTAINER (CONT) | |

B&B = BALL AND BURLAP

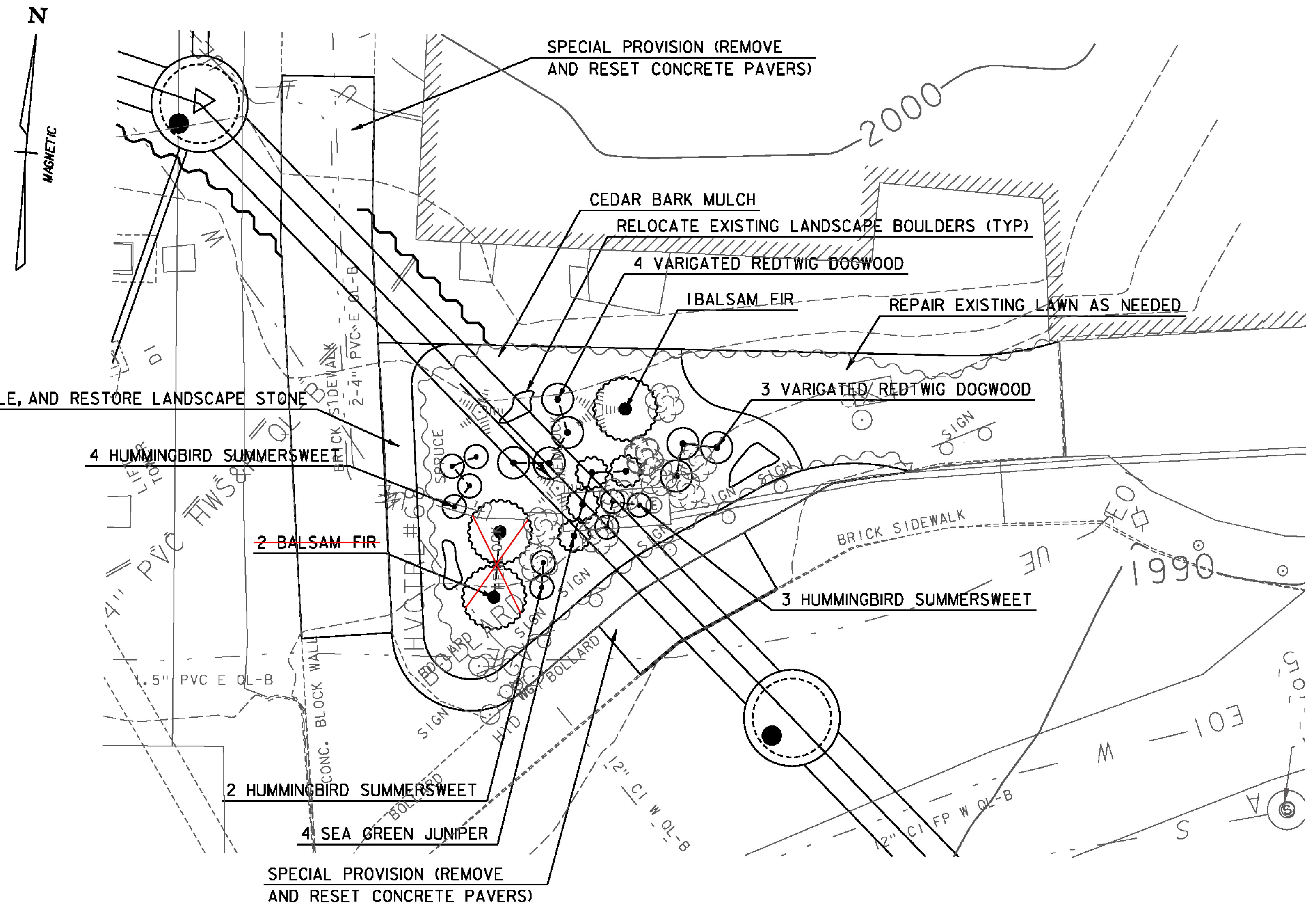


EVERGREEN TREE PLANTING DETAIL

SCALE: NOT TO SCALE

NOTES:

1. ANTI-DESICCANT SPRAY IS TO BE APPLIED TO ALL EVERGREENS PER MANUFACTURER SPECIFICATIONS.
2. COMPLETELY REMOVE ALL GUY-WIRES AND TURNBUCKLE ONE YEAR AFTER PLANTING.



0 10 20
SCALE IN FEET

GREEN INTERNATIONAL AFFILIATES, INC.
CIVIL AND STRUCTURAL ENGINEERS

PROJECT NAME: PERU
PROJECT NUMBER: STP SCRP(4)

FILE NAME: z07b106landbdr.dgn
PROJECT LEADER: E. ATKINS
DESIGNED BY: J. RIEMENSCHNEIDER
LANDSCAPE PLAN SHEET

PLOT DATE: 12/31/2014
DRAWN BY: D. VERTIYEV
CHECKED BY: E. ATKINS
SHEET 27 OF 45