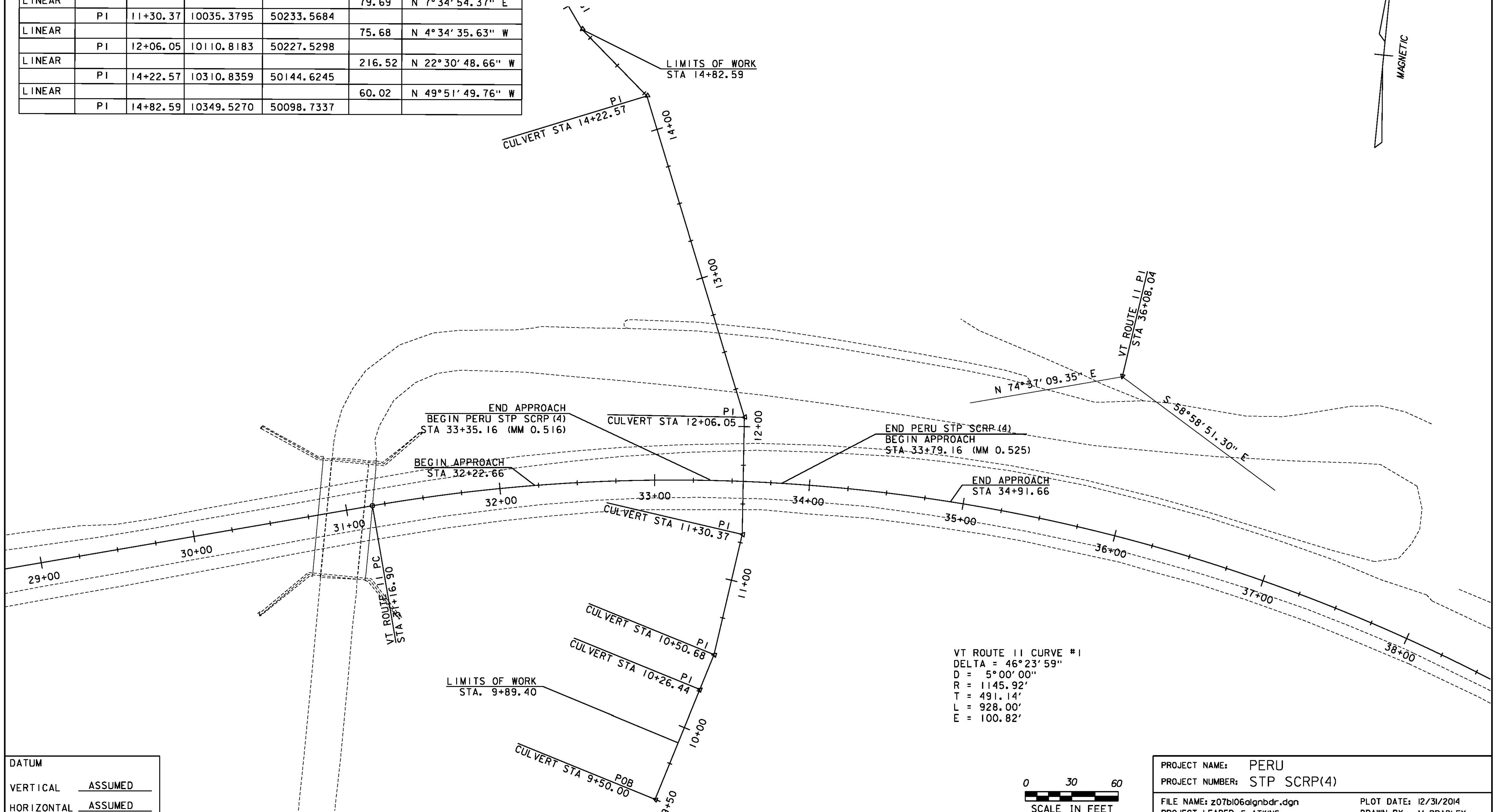
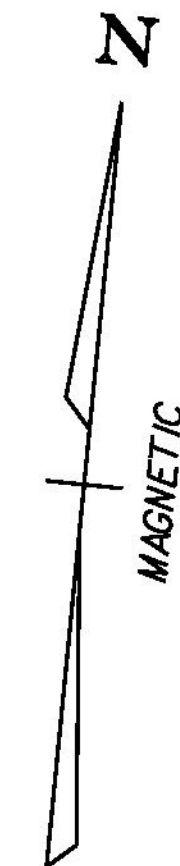


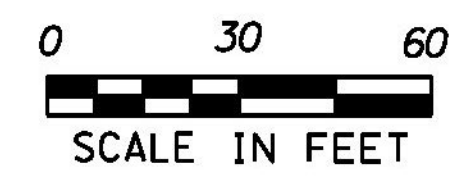
ALIGNMENT TABLE

CULVERT						
ELEMENT	POINT	STATION	NORTHING	EASTING	LENGTH	BEARING/RADIUS
	POB	9+50.00	9859.8965	50194.3068		
LINEAR					76.44	N 16°35'26.44" E
	PI	10+26.44	9933.1573	50216.1347		
LINEAR					24.23	N 16°35'21.38" E
	PI	10+50.68	9956.3818	50223.0535		
LINEAR					79.69	N 7°34'54.37" E
	PI	11+30.37	10035.3795	50233.5684		
LINEAR					75.68	N 4°34'35.63" W
	PI	12+06.05	10110.8183	50227.5298		
LINEAR					216.52	N 22°30'48.66" W
	PI	14+22.57	10310.8359	50144.6245		
LINEAR					60.02	N 49°51'49.76" W
	PI	14+82.59	10349.5270	50098.7337		

VT ROUTE 11						
ELEMENT	POINT	STATION	NORTHING	EASTING	LENGTH	BEARING/RADIUS
	POB	23+16.63	9816.5915	49216.8240		
LINEAR					806.27	N 74°37'09.35" E
	PC	31+16.90	10030.4401	49994.2172		
CURVE					928.00	1145.92'
	PT	40+44.90	9907.6102	50888.6713		



DATUM	
VERTICAL	ASSUMED
HORIZONTAL	ASSUMED
ADJUSTMENT	NONE



GREEN INTERNATIONAL AFFILIATES, INC.
CIVIL AND STRUCTURAL ENGINEERS

PROJECT NAME:	PERU	PLOT DATE:	12/31/2014
PROJECT NUMBER:	STP SCRP(4)	DRAWN BY:	M. BRADLEY
FILE NAME:	z07b106algnbdr.dgn	CHECKED BY:	E. ATKINS
DESIGNED BY:	M. BRADLEY	ALIGNMENT SHEET	SHEET 16 OF 45