

HVCTRL #1

DESIGNATION  
 "RENAISSANCE"  
 \*\* N = 755481.3600  
 E = 1638535.3500  
 ELEV. = 707.670

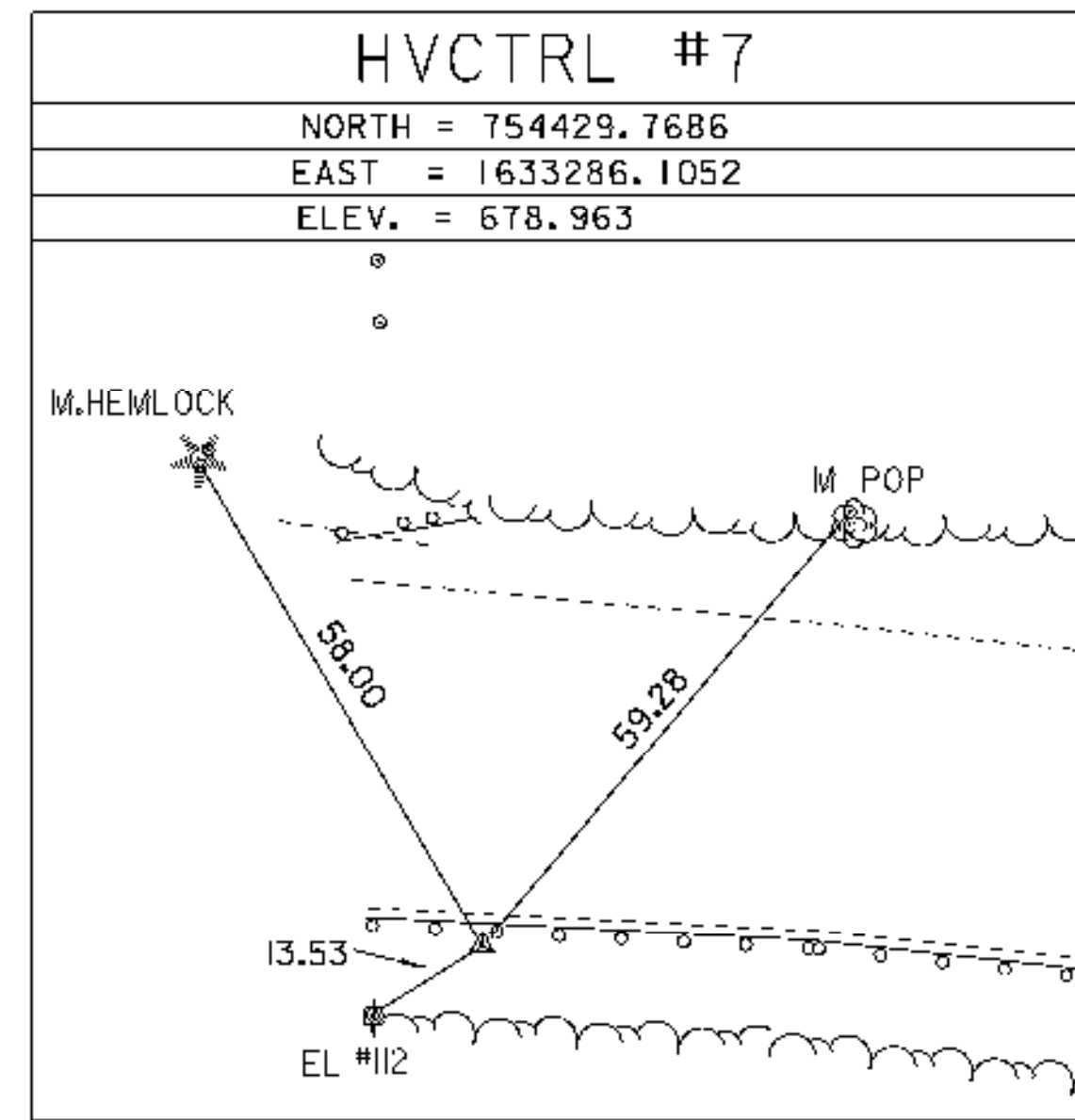
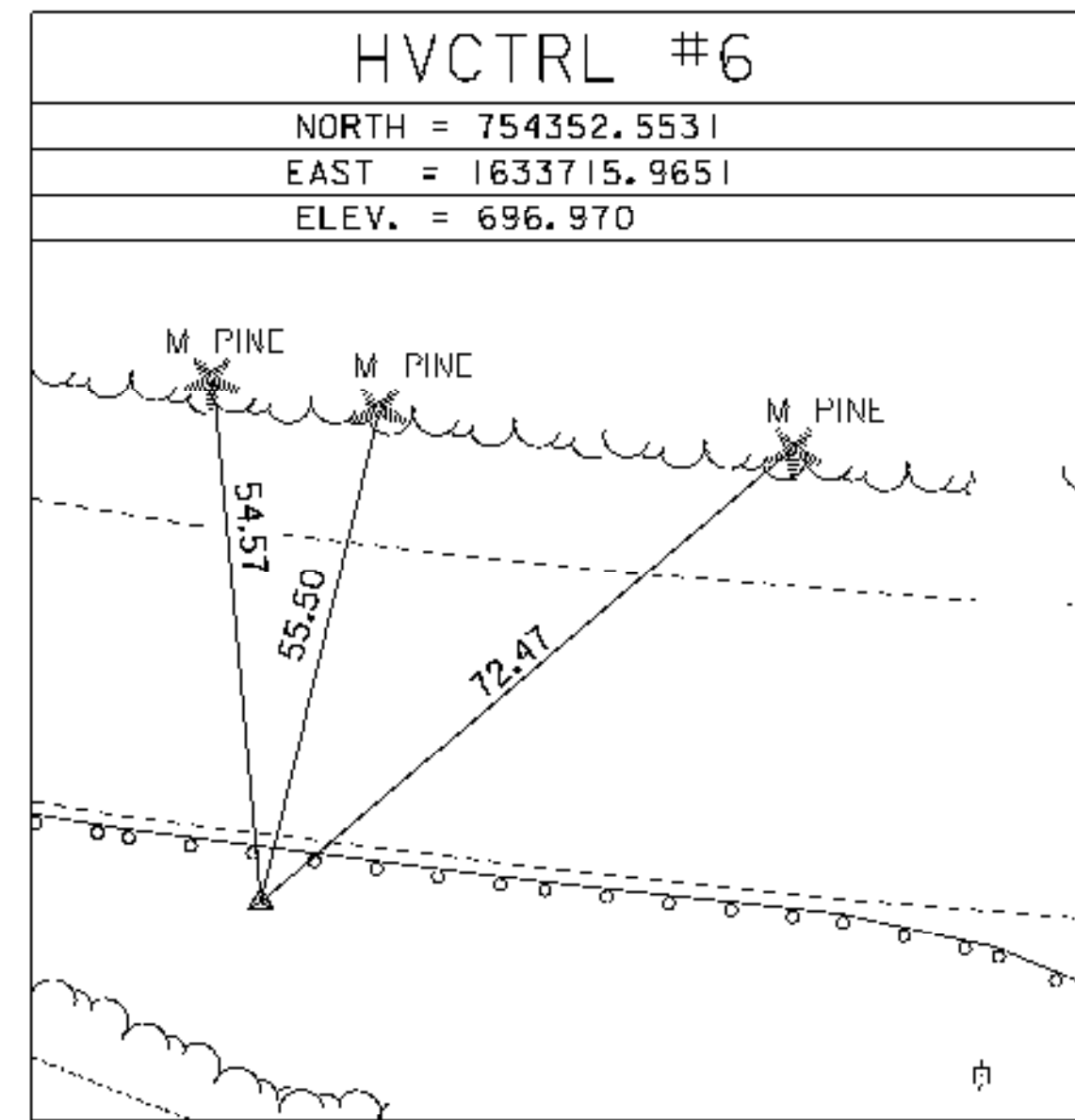
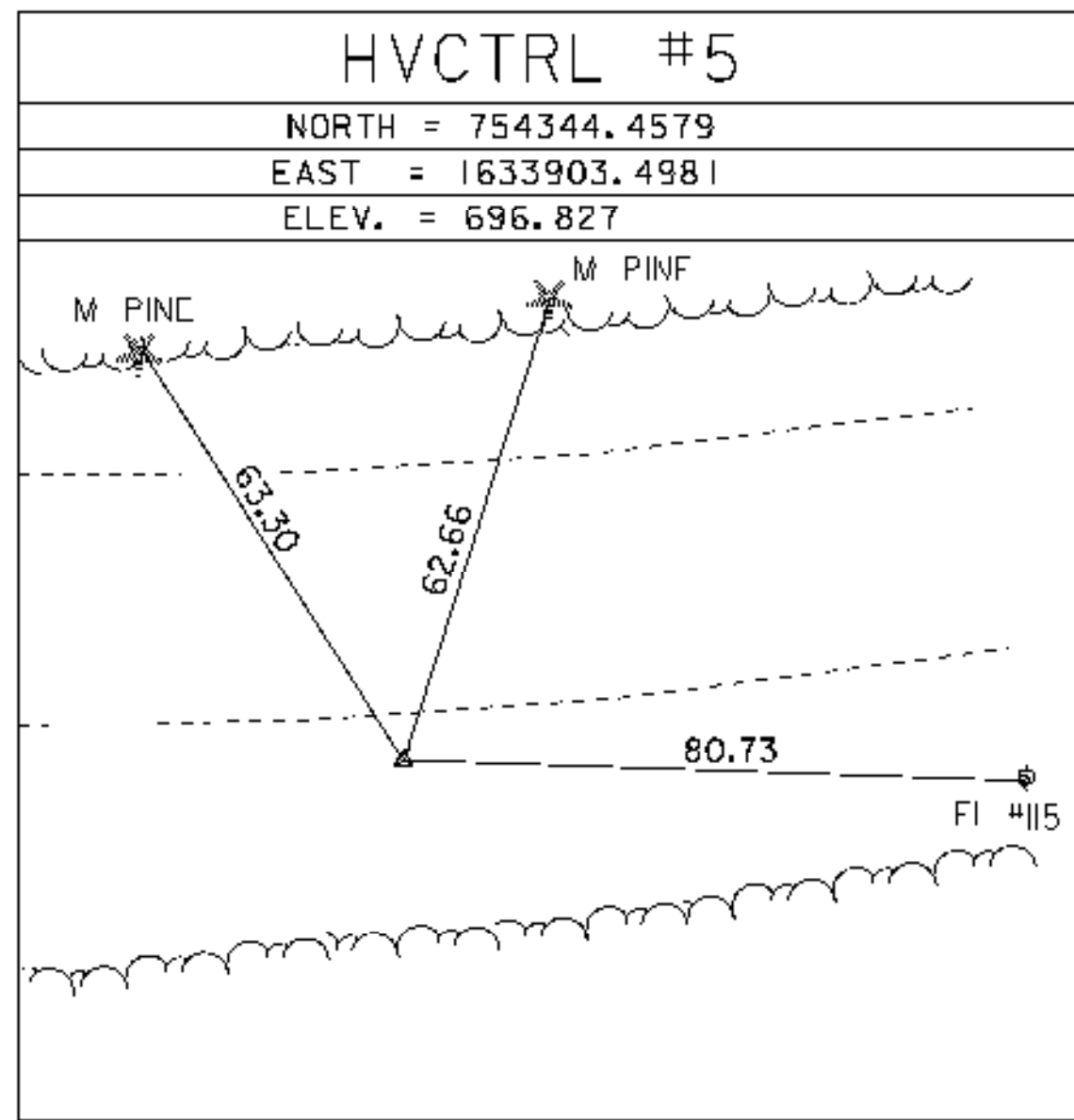
GENERAL LOCATION, WOLCOTT, VT. OWNERSHIP, THOMAS MARTIN, PO BOX 94, WOLCOTT, VT 05680. TO REACH FROM THE INTERSECTION OF VT ROUTE 15 AND VT ROUTE 100 IN MORRISTOWN, GO EAST ALONG VT ROUTE 15 FOR 4.6 MI TO THE INTERSECTION OF A DRIVE LEFT LEADING TO DEMARS MINI STORAGE AND THE SITE OF THE MARK IN THE GRASSY STRIP BETWEEN THE MAIN GRAVEL DRIVE AND THE DRIVE LEADING TO THE STORAGE UNITS. THE MARK IS SET FLUSH WITH THE GROUND SURFACE IN THE TOP OF A 30 CM DIAMETER CONCRETE MONUMENT POURED 1.3 M DEEP. IT IS 7.7 M NORTHEAST OF AND ABOUT 2.0 M HIGHER THAN THE NORTHEAST EDGE OF PAVEMENT OF VT ROUTE 15, 3.0 M SOUTHWEST OF THE SOUTHWEST EDGE OF THE GRAVEL DRIVE LEADING TO THE STORAGE UNITS, 6.4 M SOUTHEAST OF THE MOST SOUTHWESTERLY OF TWO POLES SUPPORTING A SIGN, 25.5 M NORTHWEST OF POLE #1083/6T, AND 3.0 M NORTHEAST OF A FIBERGLASS WITNESS POST.

HVCTRL #2

DESIGNATION  
 "RENAISSANCE AZ MK"  
 \*\* N = 755783.9100  
 E = 1636697.8300  
 ELEV. = 672.650

GENERAL LOCATION, WOLCOTT, VT. TO REACH FROM THE INTERSECTION OF VT ROUTE 15 AND VT ROUTE 15A IN MORRISTOWN GO EAST ALONG VT ROUTE 15 FOR 2.5 MI TO THE SITE OF THE MARK ON THE RIGHT. IT IS ABOUT 84M EAST OF THE EAST SIDE OF HOUSE #710. THE MARK IS SET 5CM BELOW GROUND SURFACE IN THE TOP OF A FENO STYLE MONUMENT. IT IS 5.4M SOUTH OF AND ABOUT 0.2M LOWER THAN THE CENTERLINE OF VT ROUTE 15, 16.4M SOUTHEAST OF POLE #13+, 15.1M EAST NORTHEAST OF THE CENTER OF THE SOUTH (OUTLET) END OF A 45CM DIAMETER METAL CULVERT, 60.4M EAST OF POLE #127/S, AND 0.3M NORTH OF A FIBERGLASS WITNESS POST.

\* DESCRIPTION PROVIDED BY VERMONT AGENCY OF TRANSPORTATION GEODETIC SURVEY UNIT



NORTH =  
 EAST =  
 ELEV. =

BM #1 - RR SPIKE IN STUMP +/- 9+45 LT ELEV = 683.198  
 BM #2 - TOP MW#5 CASING ELEV = 694.570  
 BM #3 - RR SPIKE IN MAPLE +/- 15+25 RT ELEV = 681.023  
 BM #4 - RR SPIKE IN ASH +/- 12+35 RT ELEV = 664.633

NORTH =  
 EAST =  
 ELEV. =

\* MAIN TRAVERSE COMPLETED: JAN. 4, 2005 BY R.GILMAN PC, P.WINTERS

HVCTRL #200

NORTH = 754466.654  
 EAST = 1633210.145  
 ELEV. = 681.020

HVCTRL #201

NORTH = 754418.467  
 EAST = 1633584.358  
 ELEV. = 690.356

HVCTRL #202 SETH

NORTH = 754308.275  
 EAST = 1633785.892

NORTH =  
 EAST =

NORTH =  
 EAST =

SURVEYED BY : VTRANS	PROJECT NAME: WOLCOTT
SURVEYED DATE : 04/06	PROJECT NUMBER: STP 030-2(22)
DATUM	FILE NAME: d07b096bdr.dgn
VERTICAL NAVD 88	PLOT DATE: 11-SEP-2007
HORIZONTAL NAD 83 (92)	PROJECT LEADER: JLS
	DESIGNED BY: DLG/MBL
	TIE SHEET
	CHECKED BY: SDM
	SHEET 3 OF 22