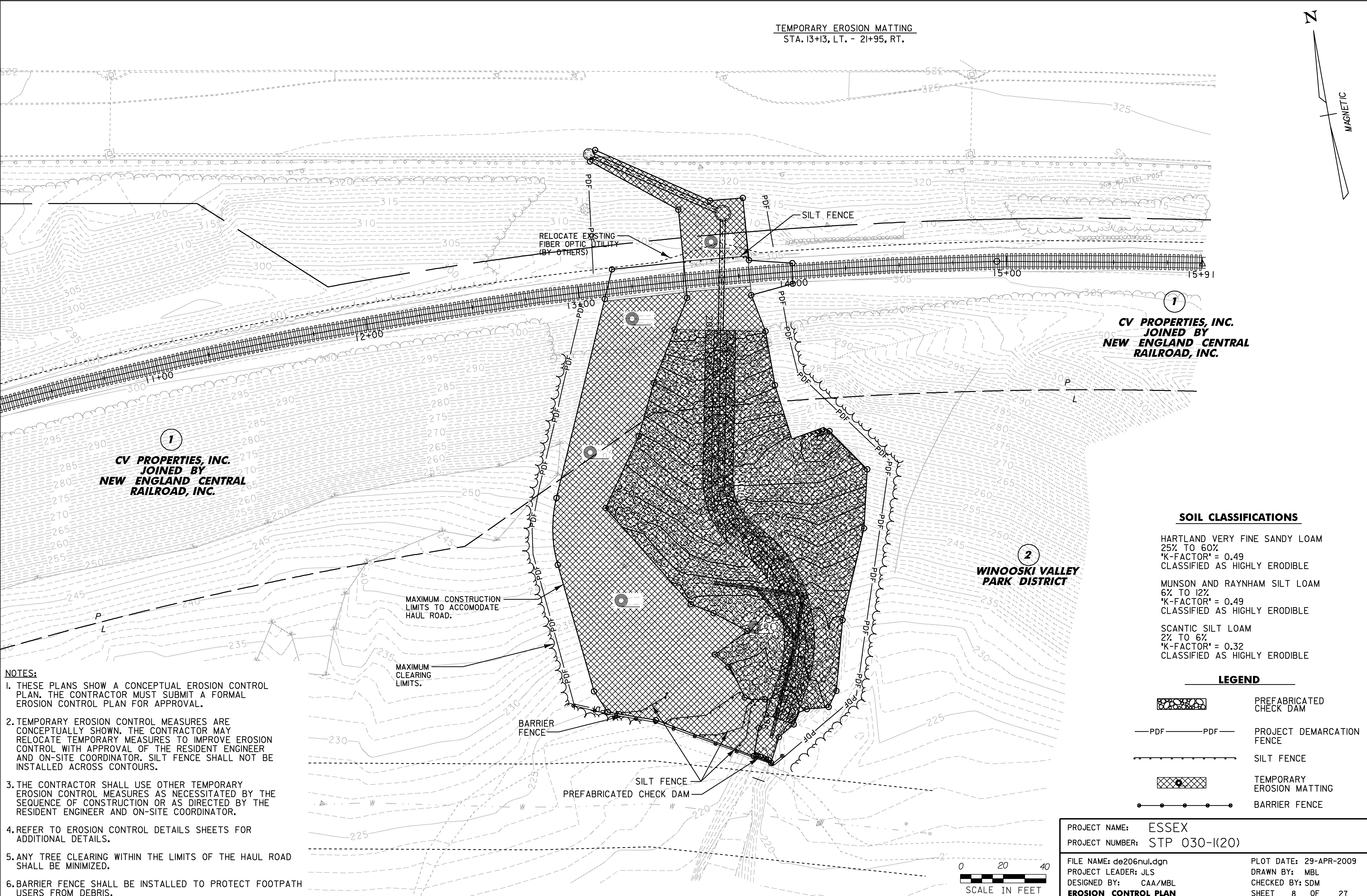
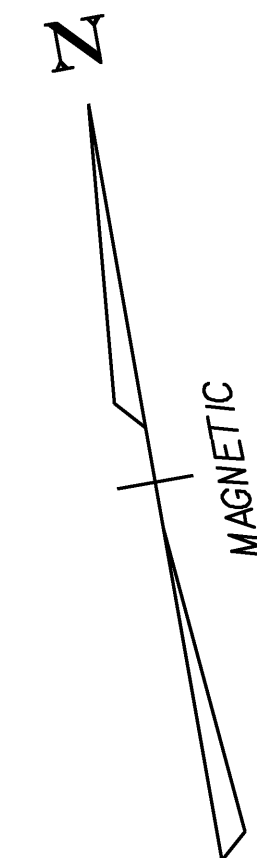


TEMPORARY EROSION MATTING
 STA. 13+13, LT. - 21+95, RT.



1
**CV PROPERTIES, INC.
 JOINED BY
 NEW ENGLAND CENTRAL
 RAILROAD, INC.**

1
**CV PROPERTIES, INC.
 JOINED BY
 NEW ENGLAND CENTRAL
 RAILROAD, INC.**

2
**WINOOSKI VALLEY
 PARK DISTRICT**

SOIL CLASSIFICATIONS

- HARTLAND VERY FINE SANDY LOAM
 25% TO 60%
 "K-FACTOR" = 0.49
 CLASSIFIED AS HIGHLY ERODIBLE
- MUNSON AND RAYNHAM SILT LOAM
 6% TO 12%
 "K-FACTOR" = 0.49
 CLASSIFIED AS HIGHLY ERODIBLE
- SCANTIC SILT LOAM
 2% TO 6%
 "K-FACTOR" = 0.32
 CLASSIFIED AS HIGHLY ERODIBLE

LEGEND

- PREFABRICATED CHECK DAM
- PROJECT DEMARCATION FENCE
- SILT FENCE
- TEMPORARY EROSION MATTING
- BARRIER FENCE

NOTES:

1. THESE PLANS SHOW A CONCEPTUAL EROSION CONTROL PLAN. THE CONTRACTOR MUST SUBMIT A FORMAL EROSION CONTROL PLAN FOR APPROVAL.
2. TEMPORARY EROSION CONTROL MEASURES ARE CONCEPTUALLY SHOWN. THE CONTRACTOR MAY RELOCATE TEMPORARY MEASURES TO IMPROVE EROSION CONTROL WITH APPROVAL OF THE RESIDENT ENGINEER AND ON-SITE COORDINATOR. SILT FENCE SHALL NOT BE INSTALLED ACROSS CONTOURS.
3. THE CONTRACTOR SHALL USE OTHER TEMPORARY EROSION CONTROL MEASURES AS NECESSITATED BY THE SEQUENCE OF CONSTRUCTION OR AS DIRECTED BY THE RESIDENT ENGINEER AND ON-SITE COORDINATOR.
4. REFER TO EROSION CONTROL DETAILS SHEETS FOR ADDITIONAL DETAILS.
5. ANY TREE CLEARING WITHIN THE LIMITS OF THE HAUL ROAD SHALL BE MINIMIZED.
6. BARRIER FENCE SHALL BE INSTALLED TO PROTECT FOOTPATH USERS FROM DEBRIS.



PROJECT NAME: ESSEX	PLOT DATE: 29-APR-2009
PROJECT NUMBER: STP 030-1(20)	DRAWN BY: MBL
FILE NAME: de206nul.dgn	CHECKED BY: SDM
PROJECT LEADER: JLS	SHEET 8 OF 27
DESIGNED BY: CAA/MBL	
EROSION CONTROL PLAN	