

GPS CONTROL POINTS

BM #1

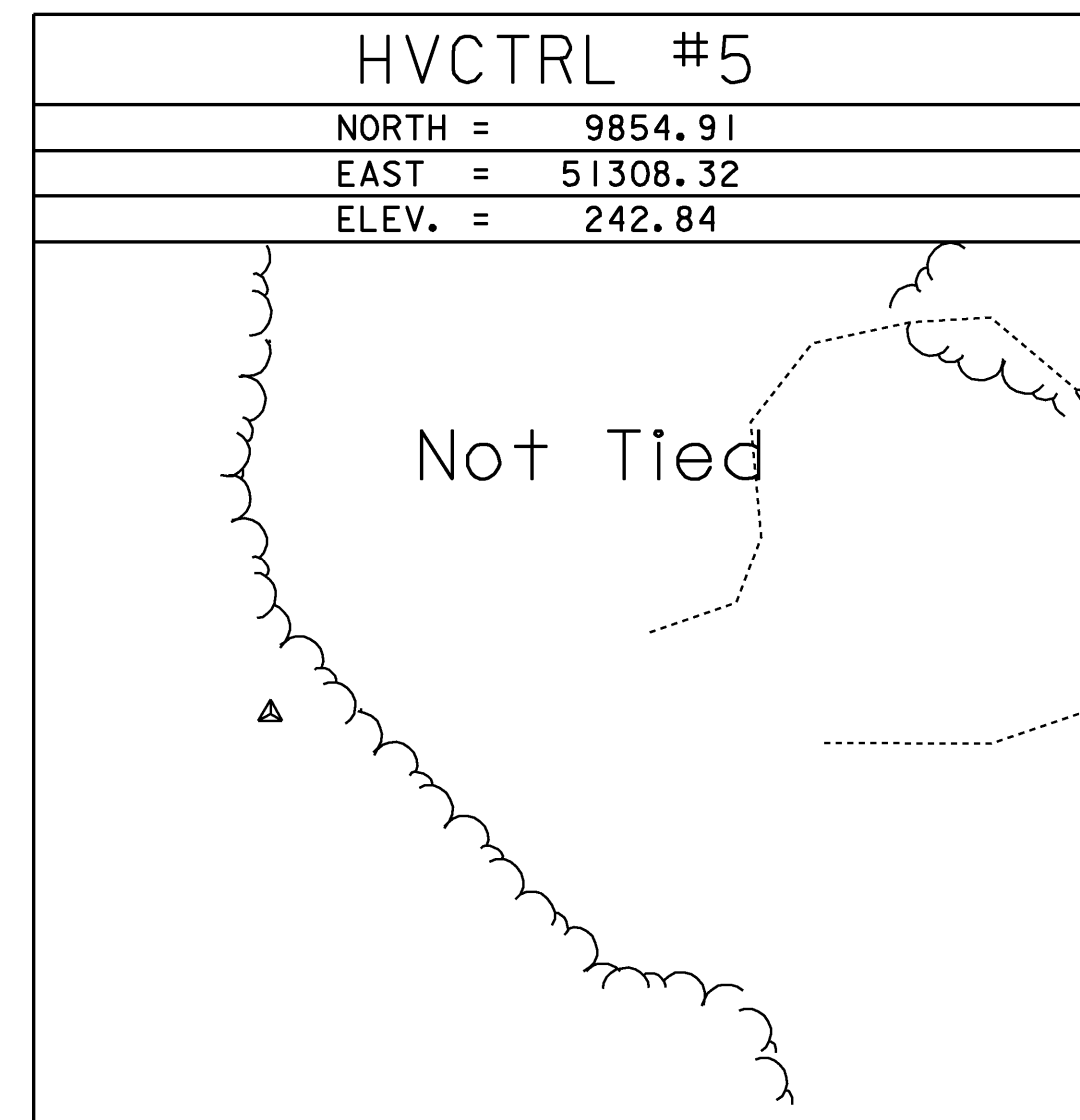
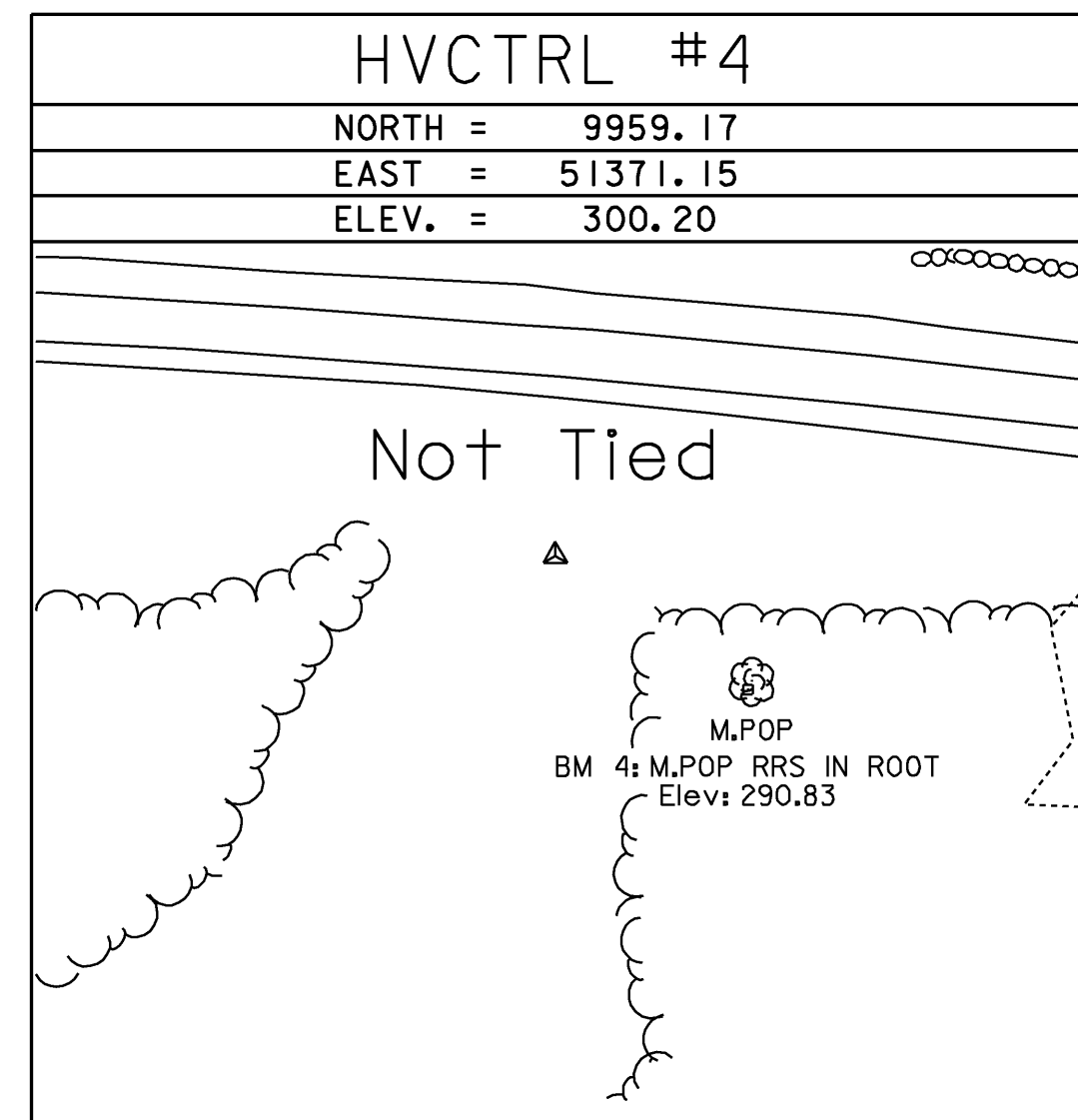
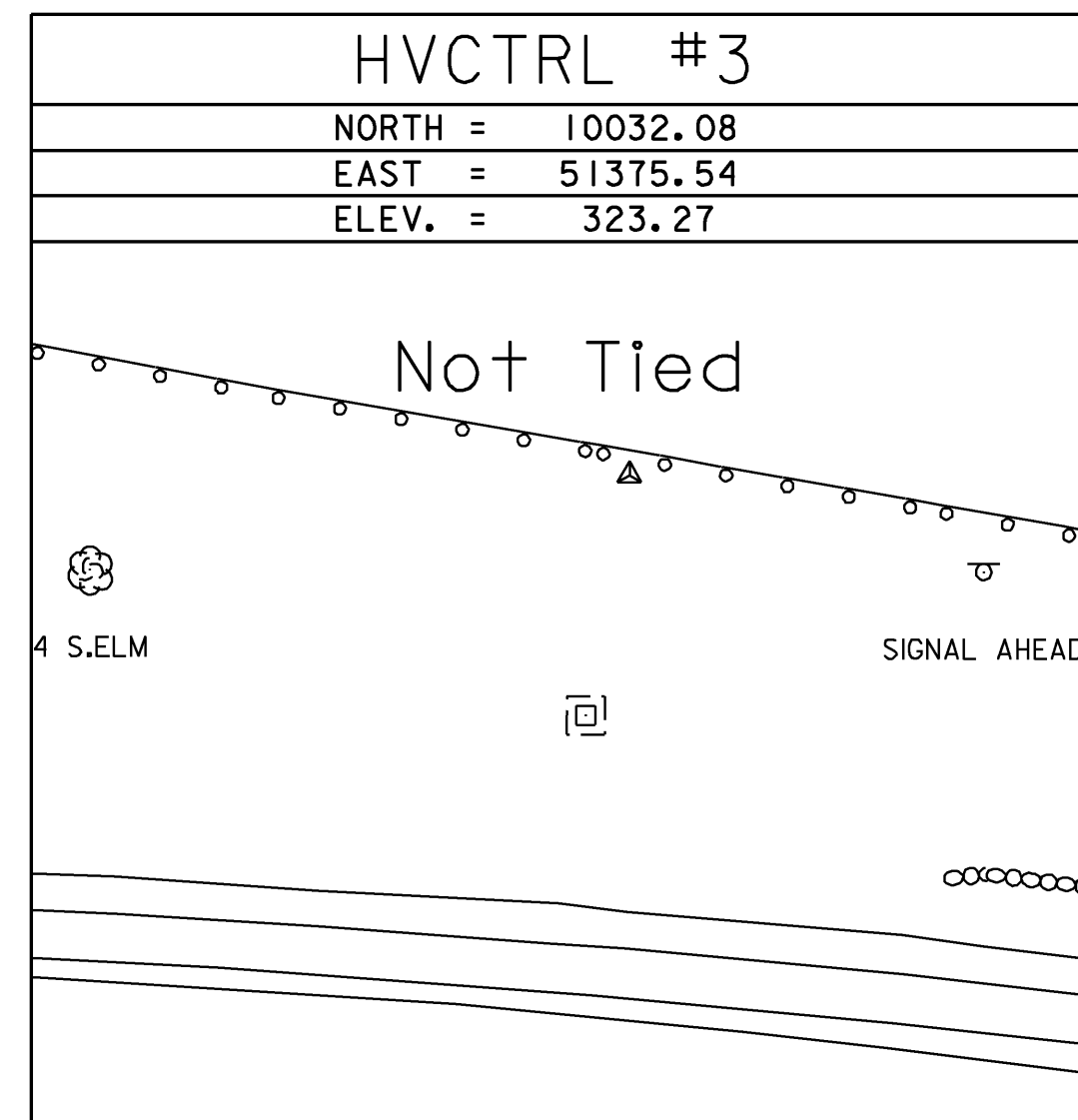
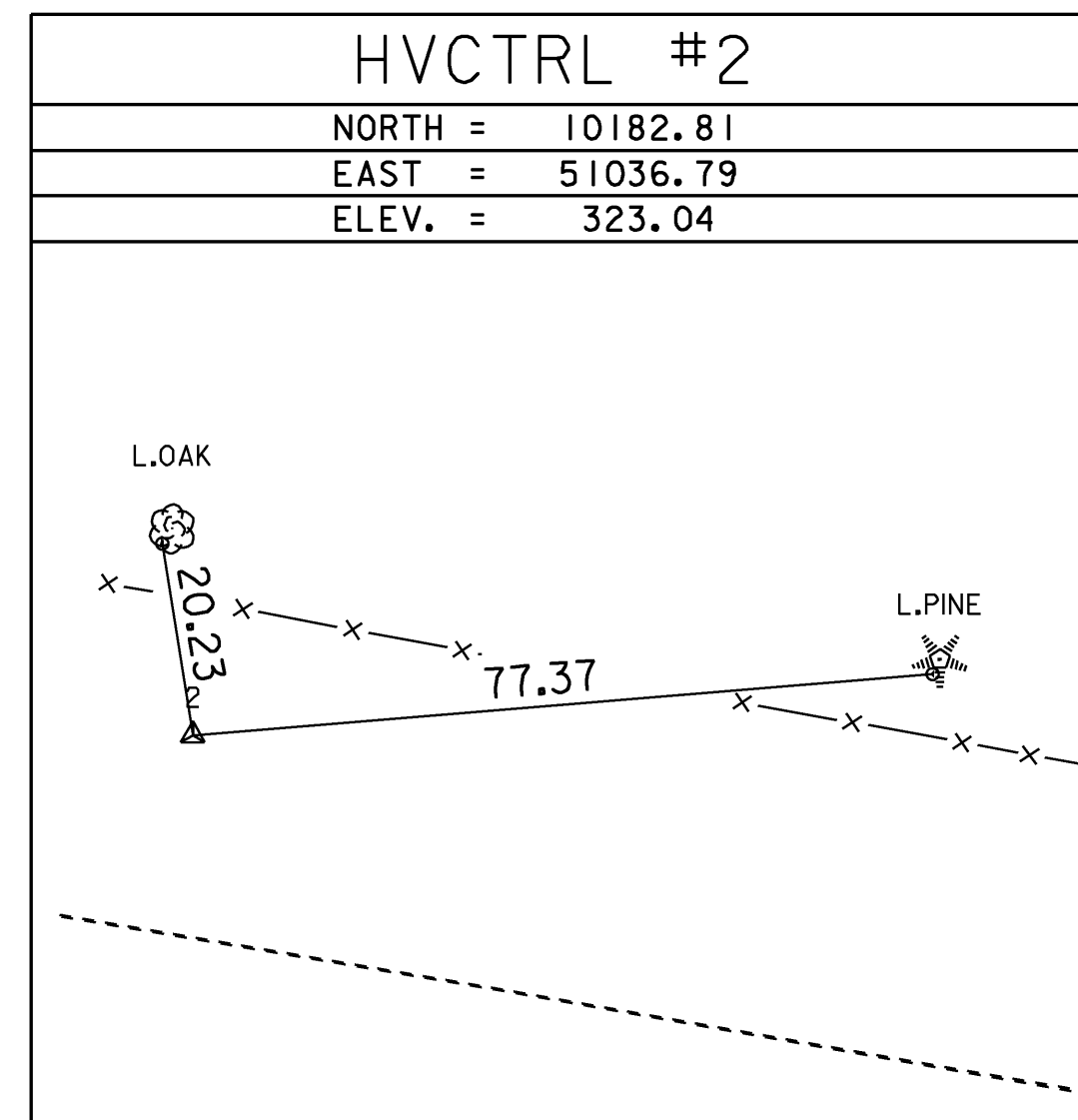
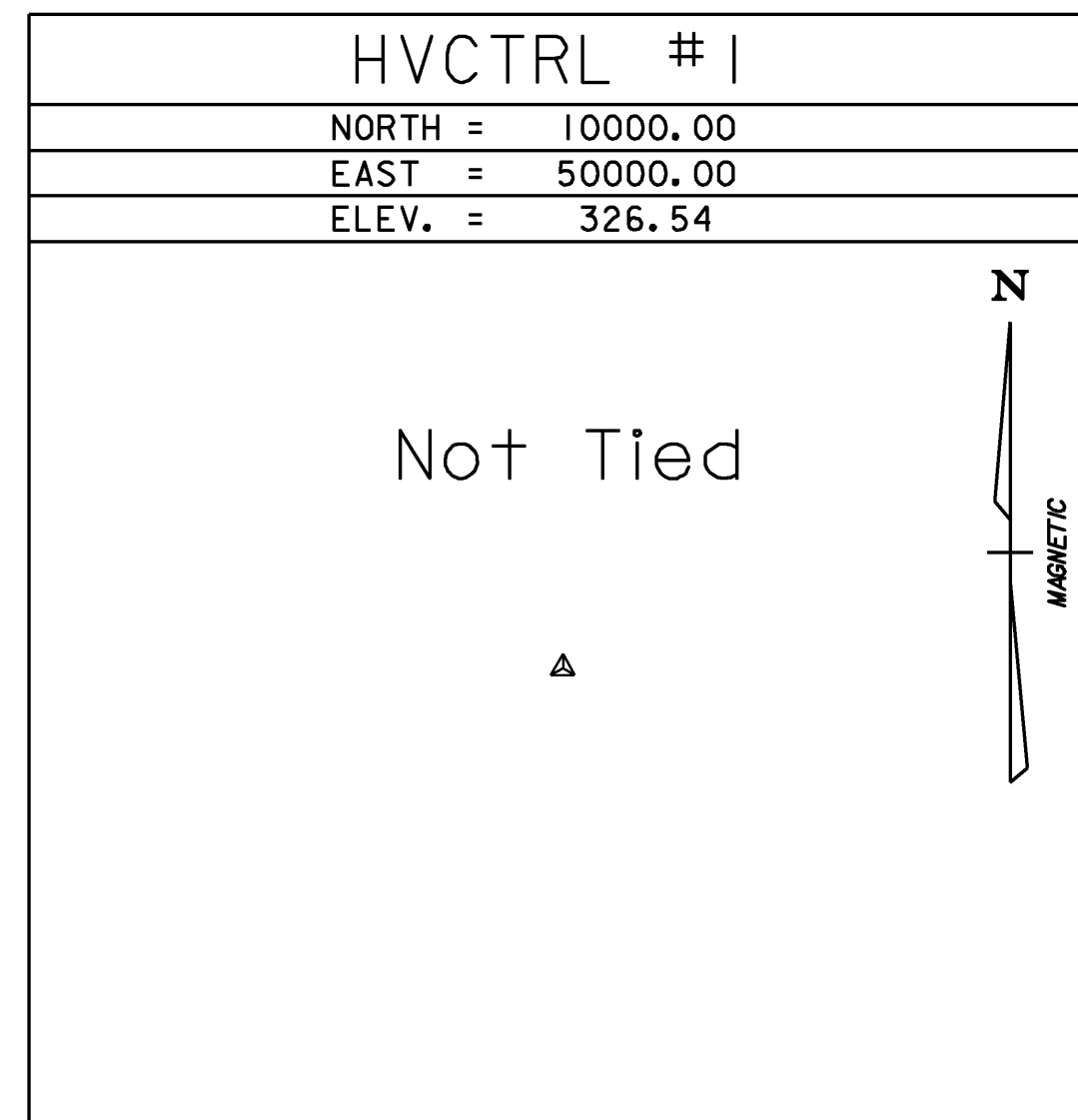
DESIGNATION
"NOYES"

ELEV. = 318.03

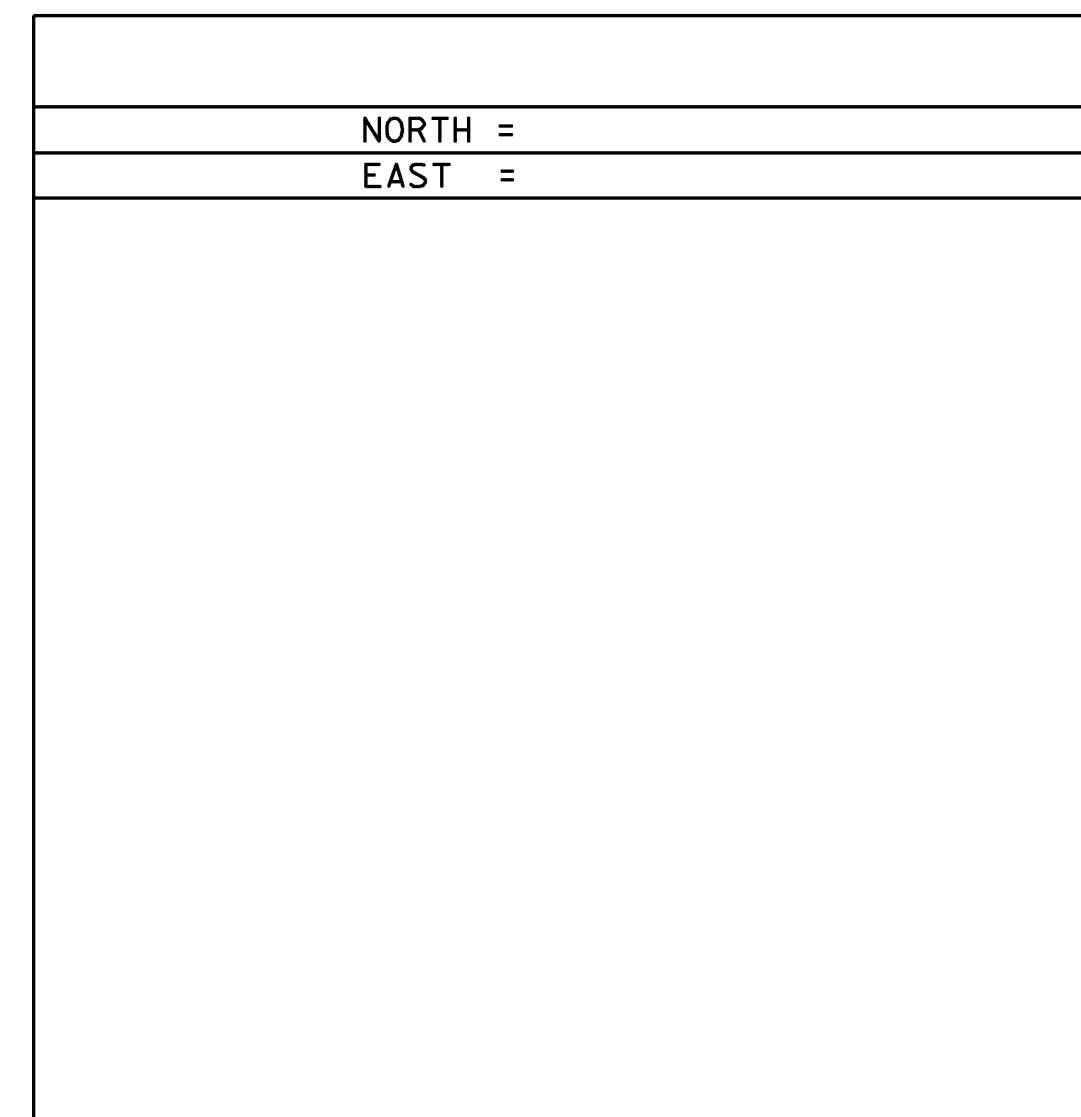
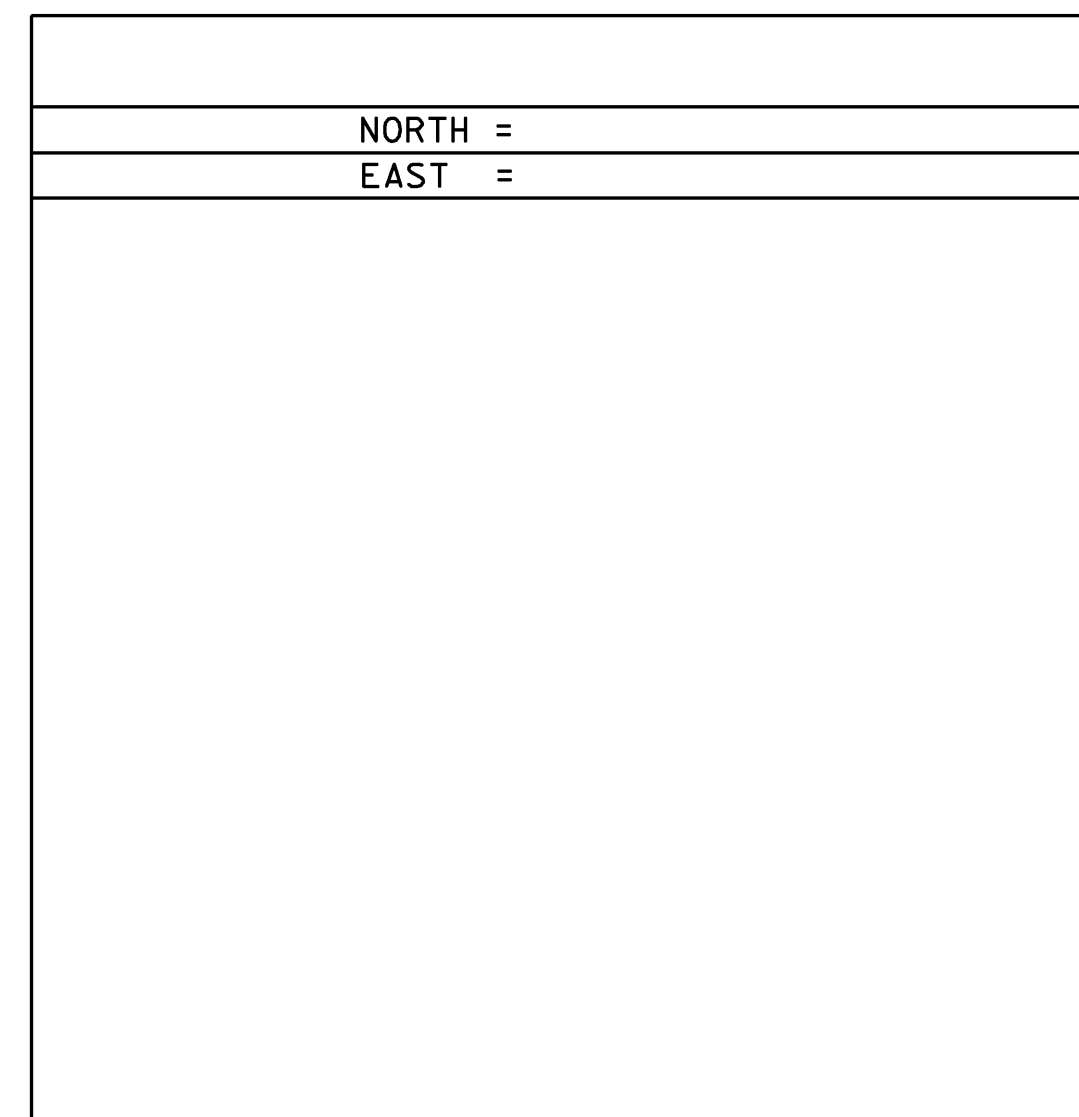
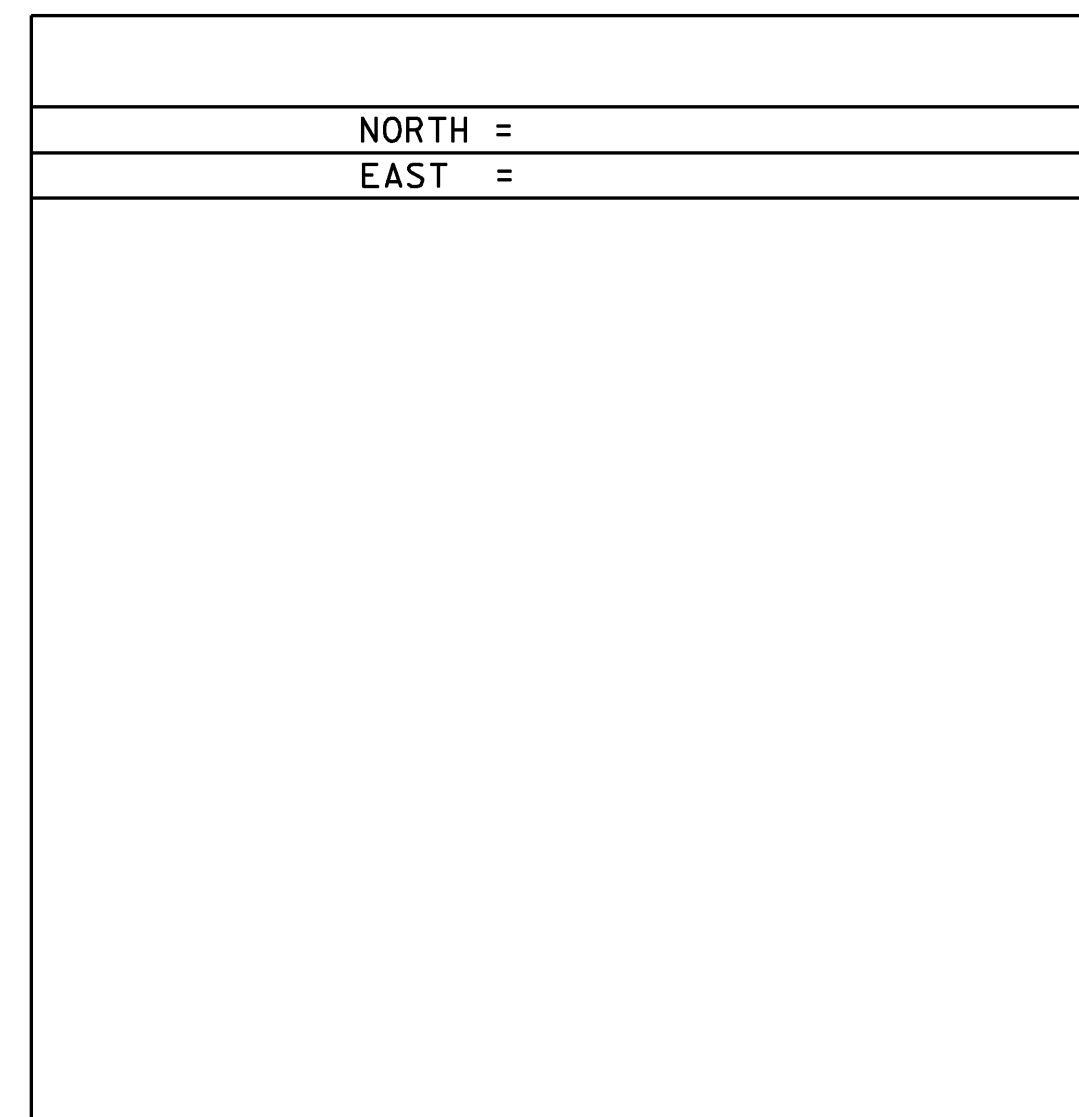
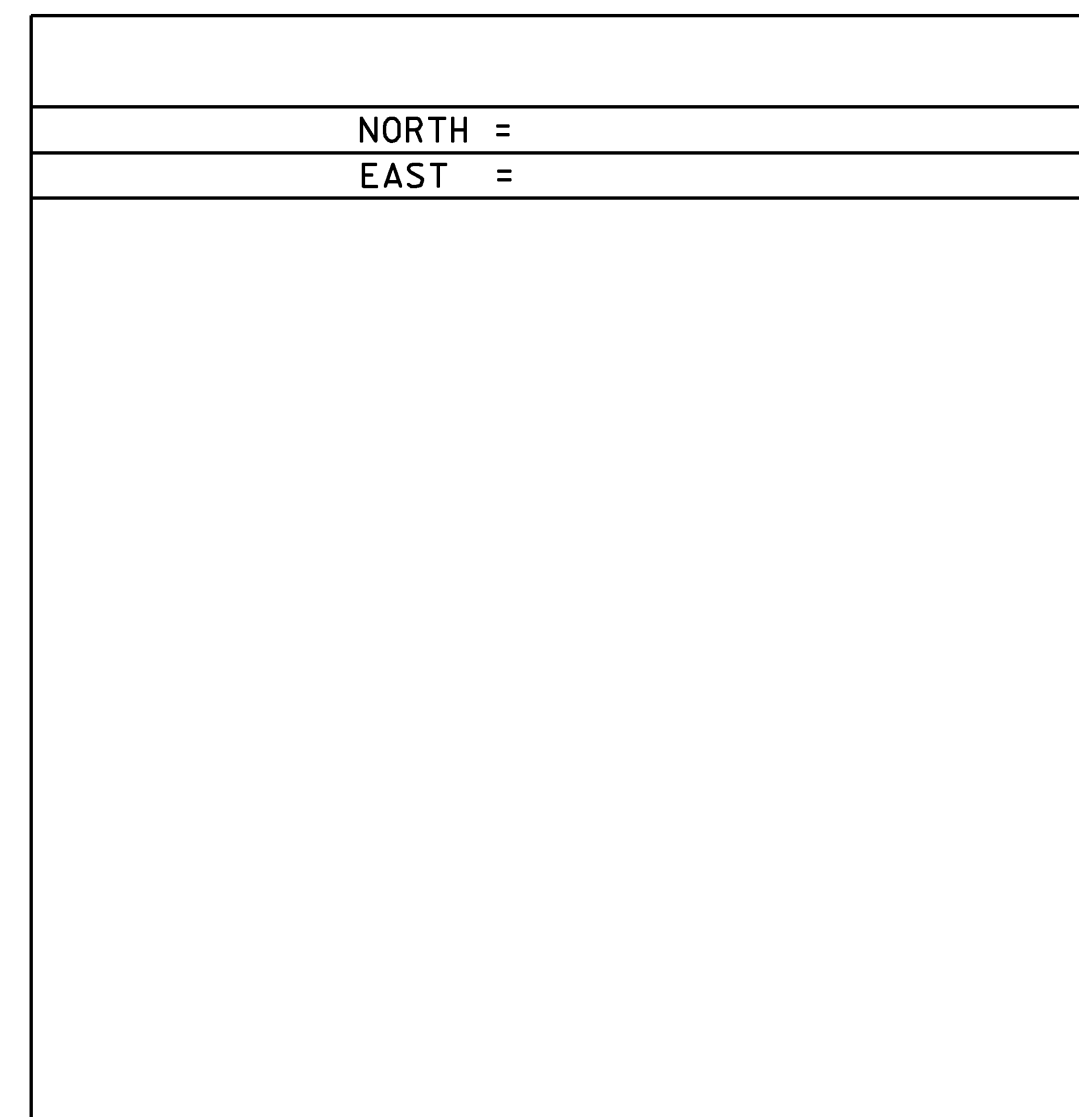
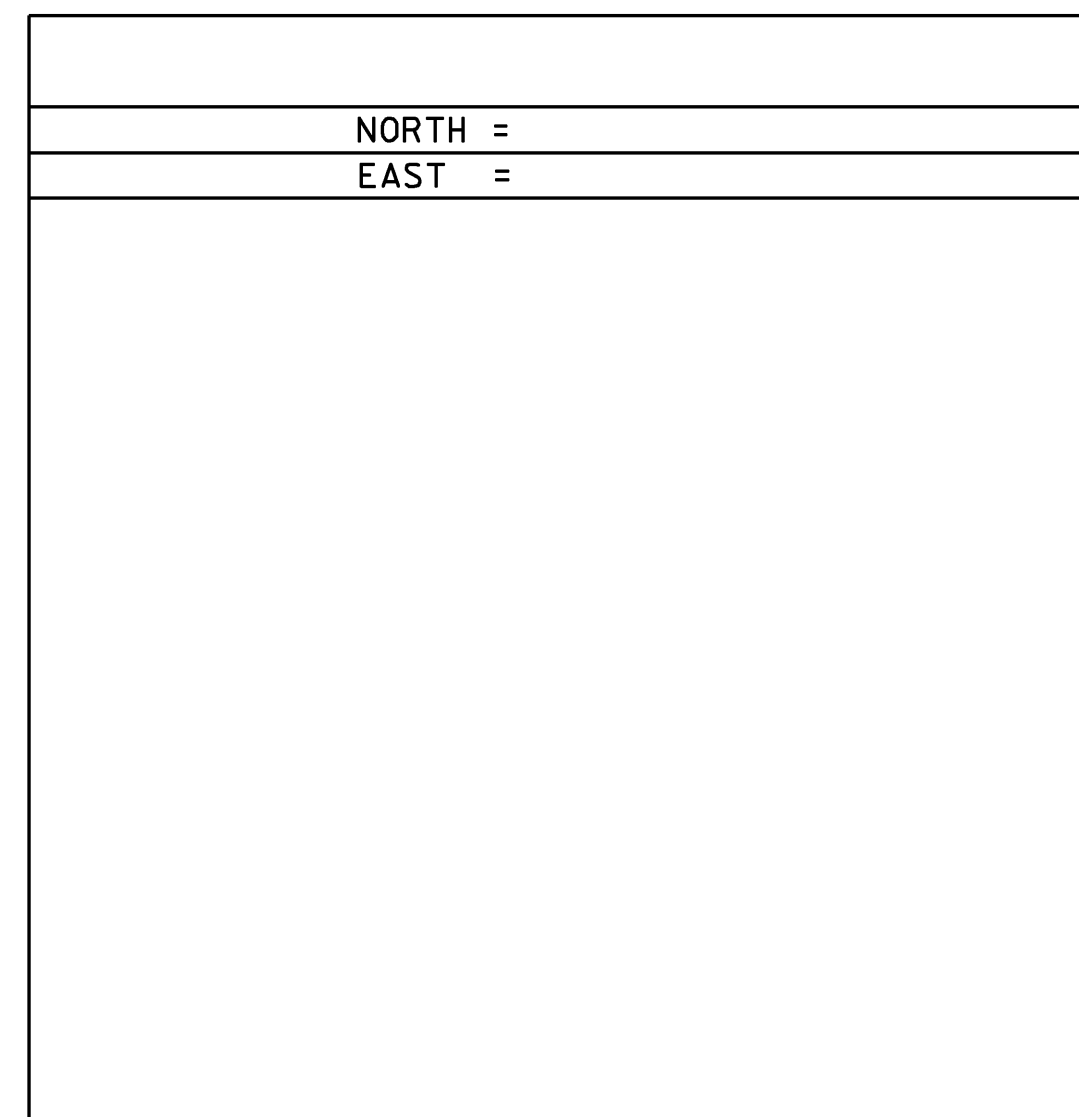
HORIZONTAL COORDINATES ASSUMED

DESCRIBED BY VERMONT AGENCY OF TRANSPORTATION 1977
TO REACH THE STATION FROM THE LINCOLN INN, GO WEST ALONG VT. ROUTE 15
APPROXIMATELY 2.6 MILES TO GATE NO. 1 ENTRANCE TO CAMP JOHNSON, ON THE
NORTHWEST SIDE OF THE ROAD, 251.5 FEET NORTHEAST OF THE CENTERLINE OF
THE ENTRANCE TO CAMP JOHNSON, 47.8 FEET WEST OF THE CENTER OF A
MAN-HOLE COVER IN THE SIDEWALK, 18 FEET NORTHWEST OF A DRILLHOLE IN
THE TOP OF THE CURB ABOVE THE WEST CORNER OF A DRAIN INLET (THIS BEING
THE SECOND DRAIN INLET NORTHEAST ALONG VT. ROUTE 15 FROM THE ENTRANCE
TO CAMP JOHNSON), 18.8 FEET SOUTHEAST OF THE RIGHT-OF-WAY FENCE, 8.5
FEET NORTHWEST OF THE NORTHWEST EDGE OF A BITUMINOUS SIDEWALK, 61.5
FEET SOUTHWEST OF AN 18-INCH ELM, 38.7 FEET NORTHEAST OF A 20-INCH ELM.

TRAVERSE TIES



ALIGNMENT TIES



SURVEYED BY : VTRANS	PROJECT NAME: ESSEX
SURVEYED DATE :	PROJECT NUMBER: STP 030-1(20)
DATUM	FILE NAME: de206frm.dgn
VERTICAL NAVD 88	PLOT DATE: 11-MAY-2009
HORIZONTAL ASSUM. MAG 05	PROJECT LEADER: JLS
DESIGNED BY: CAA/MBL	DRAWN BY: MBL
ADJUSTMENT NONE	CHECKED BY: SDM
TIE SHEETS	SHEET 3 OF 27