

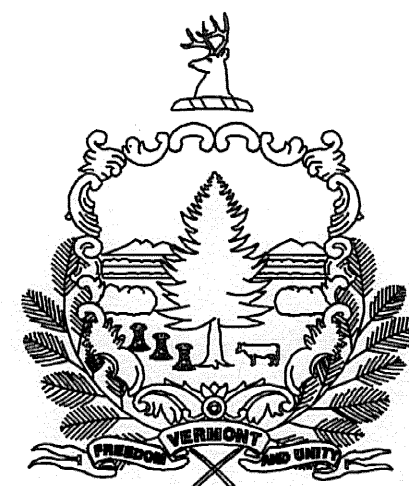
INDEX OF SHEETS

1	TITLE SHEET
2	TYPICAL SECTIONS
3	TIE SHEET
4-5	QUANTITY SHEET
6	ITEM DETAIL AND DRAINAGE SHEET
7	LAYOUT PLAN
8	EROSION CONTROL PLAN
9	EROSION CONTROL DETAILS
10	EROSION CONTROL NARRATIVE
11	LANDSCAPING PLAN
12	LANDSCAPING DETAILS
13	SWALE PROFILE
14	DRAINAGE PROFILES
15	TRACK PROFILE
16-18	TRAFFIC CONTROL PLANS
19-27	CROSS SECTIONS

STANDARDS

D-30	UNDERDRAIN CONSTRUCTION DETAILS	08/13/07
E-100	CONSTRUCTION APPROACH SIGNS	01/02/04
E-101	CONSTRUCTION SIGN DETAILS	05/30/03
E-102	CONSTRUCTION SIGN DETAILS	06/30/03
E-102A	CONSTRUCTION SIGN DETAILS	05/01/04
E-103	MANLINE TRAFFIC CONTROL DIVIDED HIGHWAY - ONE LANE CLOSED	03/01/04
E-107	DELINIATION, BARRICADES AND DETOURS FOR U-TURNS ON DIVIDED HIGHWAY	06/30/03
E-107A	BREAKAWAY BARRICADE DETAILS	08/08/95
G-ID	STEEL BEAM GUARDRAIL (40MPH & LESS)	01/03/00
	HEAVY DUTY STEEL BEAM GUARDRAIL	
	STEEL BEAM MEDIAN BARRIER	
	ANCHOR FOR STEEL BEAM RAIL	

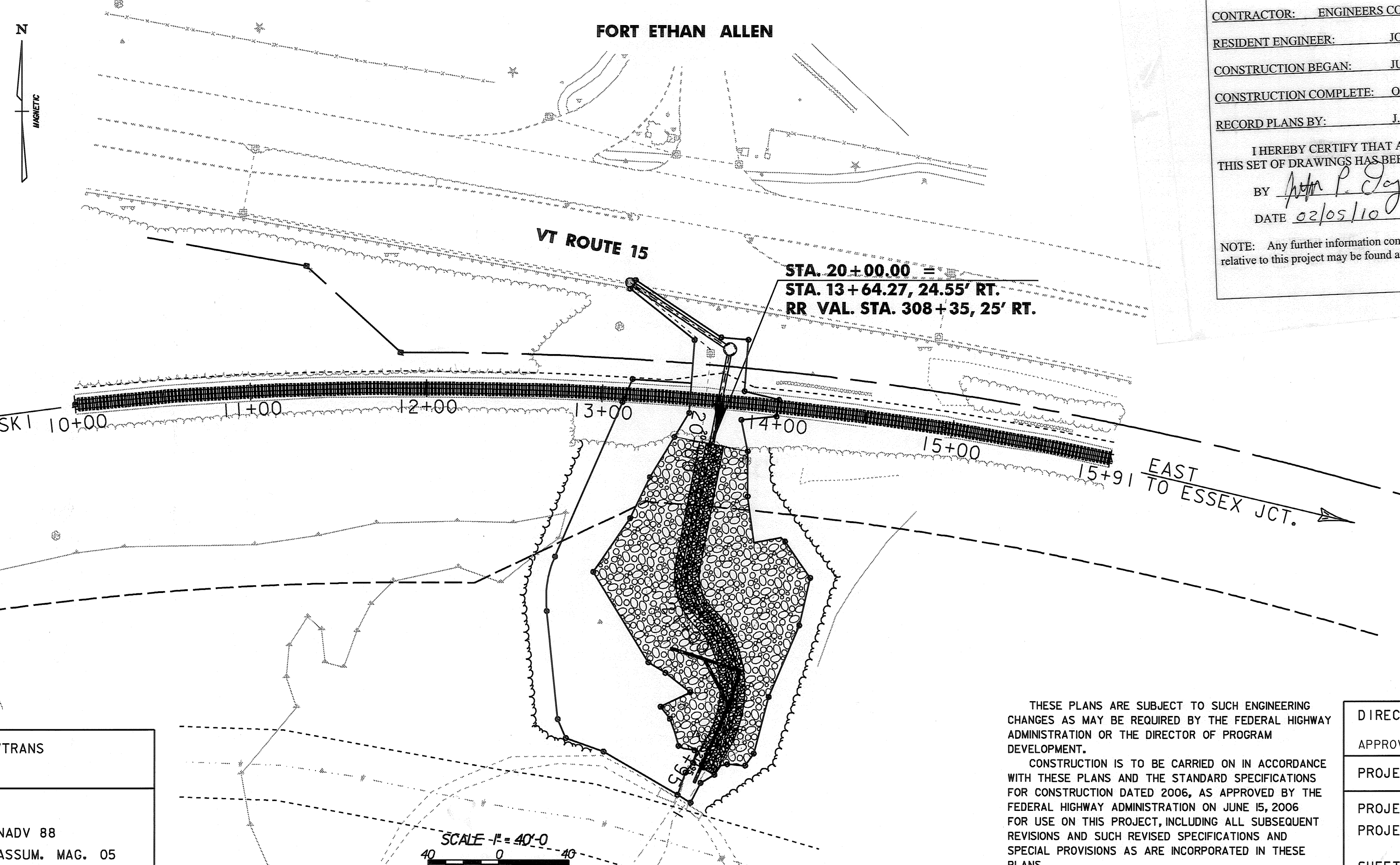
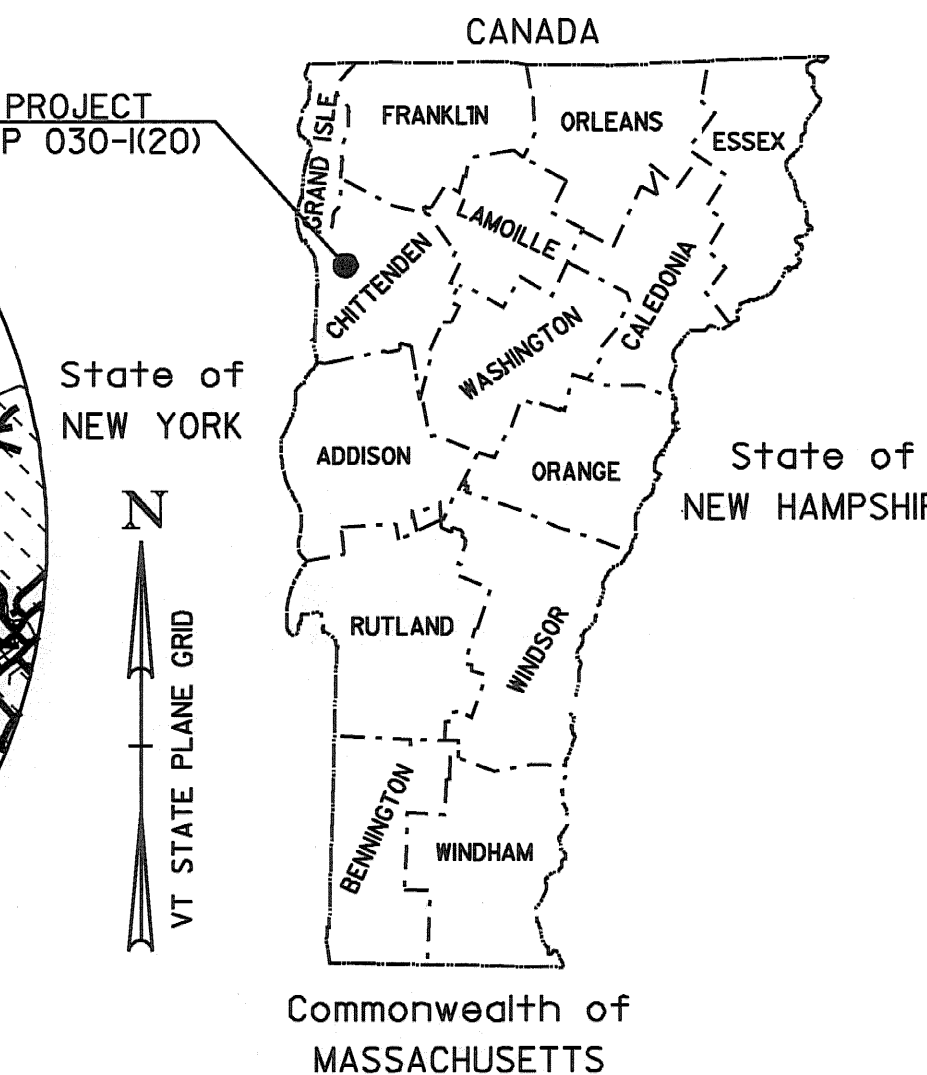
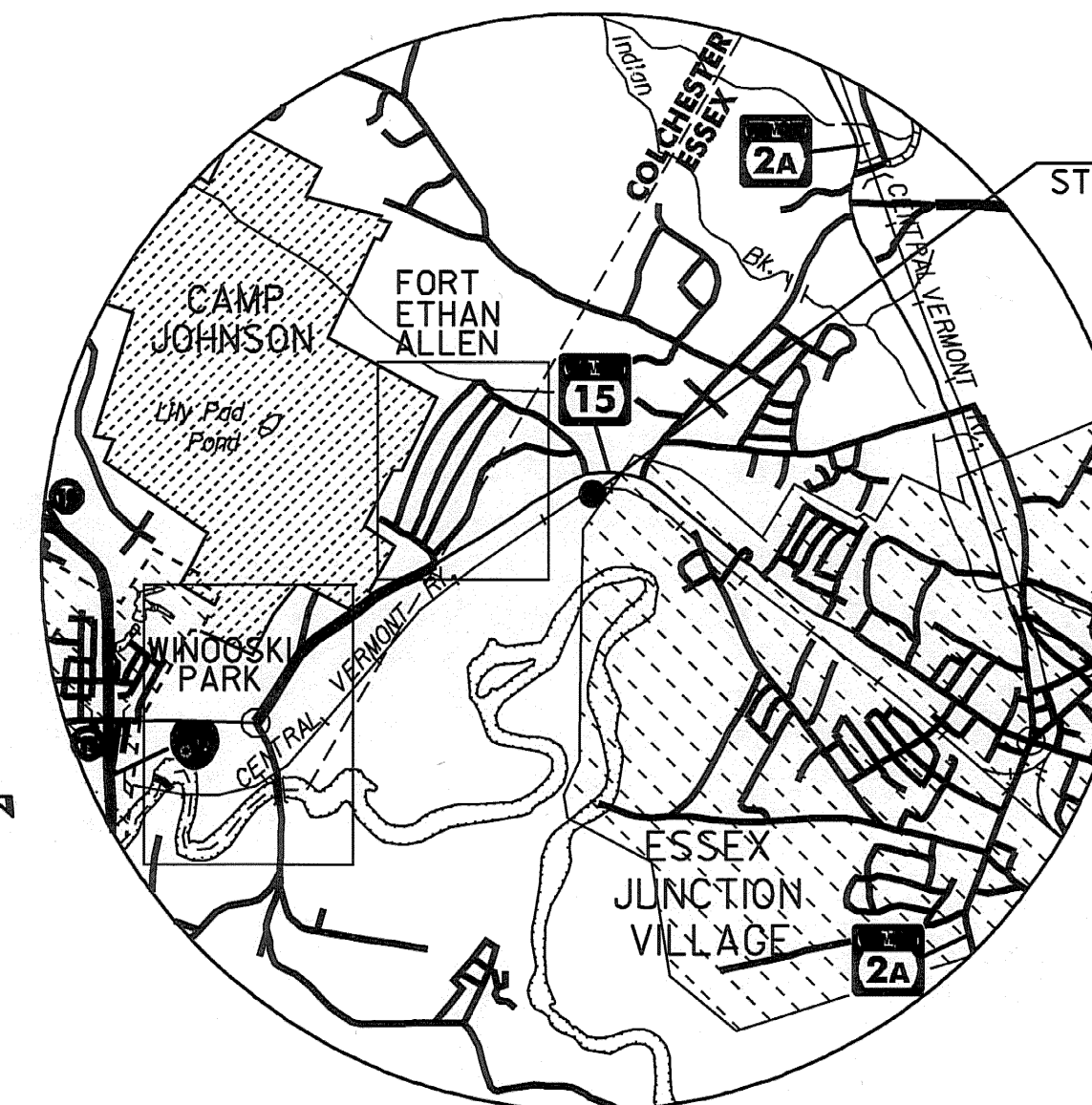
# STATE OF VERMONT AGENCY OF TRANSPORTATION



## PROPOSED SAFETY IMPROVEMENT TOWN OF ESSEX COUNTY OF CHITTENDEN

LOCATED IN THE TOWN OF ESSEX ON VERMONT ROUTE 15, ADJACENT TO THE NEW ENGLAND CENTRAL RAILROAD (NECR), BEGINNING AT VT ROUTE 15 MM 0.20 AND EXTENDING EASTERLY 0.30 MILES TO MM 0.50.

WORK TO BE PERFORMED UNDER THIS PROJECT INCLUDES REPAIR OF A SLIDE AREA ON THE SOUTH SIDE OF THE NECR, INCLUDING NEW DRAINAGE STRUCTURES WITHIN THE HIGHWAY AND RAILROAD ROW, A SLEEVE UNDER THE RAILROAD, AND REPLACEMENT OF RAILROAD TIES AND BALLAST.



**RECORD PLANS**

CONTRACTOR: ENGINEERS CONSTRUCTION, INC. - SO. BURLINGTON, VT

RESIDENT ENGINEER: JON DAY

CONSTRUCTION BEGAN: JULY 22, 2009

CONSTRUCTION COMPLETE: OCTOBER 6, 2009

RECORD PLANS BY: J. DAY, N. GARBACIK

I HEREBY CERTIFY THAT ALL THE CONSTRUCTION REQUIRED BY THIS SET OF DRAWINGS HAS BEEN ACCOMPLISHED AS INDICATED HEREIN.

BY: *[Signature]* RESIDENT ENGINEER

DATE: 02/05/10

NOTE: Any further information concerning final quantities, amounts or other details relative to this project may be found at Central Files in the electronic archives.

**CONVENTIONAL SYMBOLS**

COUNTY LINE	
TOWN LINE	
LIMITS OF ACCESS	
POINT OF ACCESS	
FENCE LINE	
STONE WALL	
TRAVELED WAY	
GUARD RAIL	
RAILROAD	
SURVEY LINE	
CULVERT	
POWER POLE	
TELEPHONE POLE	
TREES	
CONTROL OF ACCESS	
PROPERTY LINE	
R.O.W. TAKING LINE	
SLOPE RIGHTS	
TOP OF CUT	
TOE OF SLOPE	

SURVEYED BY : VTRANS

SURVEYED DATE :

DATUM

VERTICAL NADV 88

HORIZONTAL ASSUM. MAG. 05

THESE PLANS ARE SUBJECT TO SUCH ENGINEERING CHANGES AS MAY BE REQUIRED BY THE FEDERAL HIGHWAY ADMINISTRATION OR THE DIRECTOR OF PROGRAM DEVELOPMENT.

CONSTRUCTION IS TO BE CARRIED ON IN ACCORDANCE WITH THESE PLANS AND THE STANDARD SPECIFICATIONS FOR CONSTRUCTION DATED 2006, AS APPROVED BY THE FEDERAL HIGHWAY ADMINISTRATION ON JUNE 15, 2006 FOR USE ON THIS PROJECT, INCLUDING ALL SUBSEQUENT REVISIONS AND SUCH REVISED SPECIFICATIONS AND SPECIAL PROVISIONS AS ARE INCORPORATED IN THESE PLANS.

DIRECTOR OF PROGRAM DEVELOPMENT

APPROVED \_\_\_\_\_ DATE \_\_\_\_\_

PROJECT MANAGER : JOSHUA L. SCHULTZ

PROJECT NAME : ESSEX

PROJECT NUMBER : STP 030-1 (20)

SHEET 1 OF 27 SHEETS