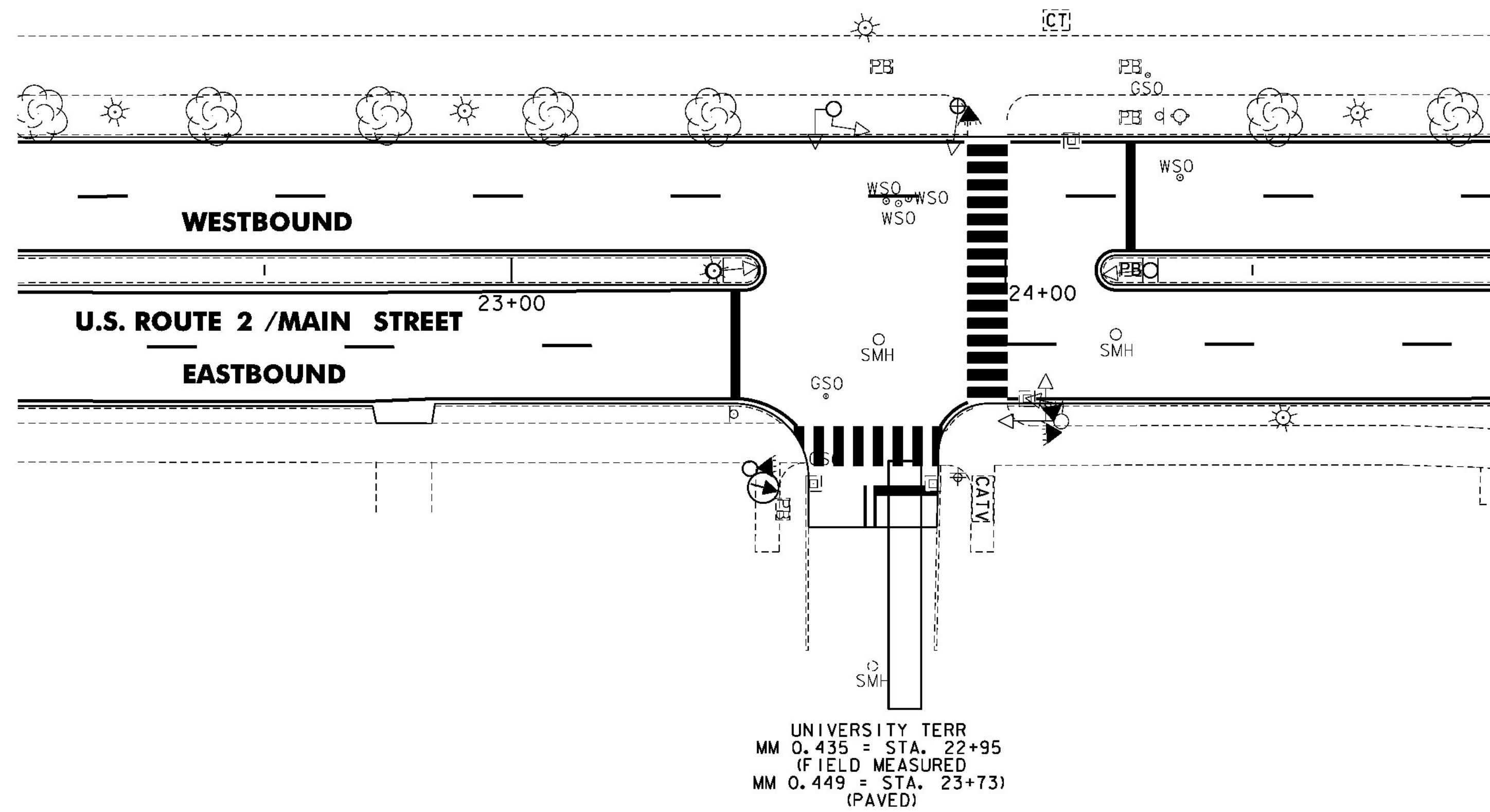


U.S. ROUTE 2 / UNIVERSITY TERRACE INTERSECTION



ITEM 900.620 SPECIAL PROVISION (VIDEO VEHICLE DETECTION SYSTEM) (U.S. ROUTE 2 @ UNIVERSITY TERRACE) BURLINGTON STA. 23+73		
QUANTITY	UNIT	DESCRIPTION
1	EA	VIDEO DETECTOR CAMERA ASSEMBLY
210	LF	VIDEO DETECTOR CABLE
1	EA	VIDEO DETECTOR CAMERA MOUNTING BRACKET
1	EA	CABINET RACK *
1	EA	ADJUST HEIGHT OF CABINET RACK (AS NECESSARY) *

* INCIDENTAL TO OTHER TRAFFIC SIGNAL ITEMS

ITEM 900.620 SPECIAL PROVISION (PEDESTRIAN SIGNAL HEADS, COUNTDOWN) (U.S. ROUTE 2 @ UNIVERSITY TERRACE) BURLINGTON STA. 23+73		
QUANTITY	UNIT	DESCRIPTION
4	EA	COUNT-DOWN PEDESTRIAN SIGNAL WITH MOUNTING HARDWARE
4	EA	ACCESSIBLE PEDESTRIAN PUSHBUTTON ASSEMBLY

LEGEND	
DESCRIPTION	
---	EXISTING CONDUIT
□	EXISTING JUNCTION BOX
CT	EXISTING CONTROLLER CABINET
⊙	EXISTING POLE
▭	VIDEO DETECTION AREA
⊙	EXISTING VIDEO DETECTOR CAMERA
⊙	PROPOSED VIDEO DETECTOR CAMERA
◁	EXISTING VEHICLE SIGNAL
◁	PROPOSED VEHICLE SIGNAL
PB	EXISTING PULL BOX
▷	EXISTING PEDESTRIAN SIGNAL
▷	PROPOSED COUNT-DOWN PEDESTRIAN SIGNAL

NOTES:

- THIS PLAN SHEET IS NOT TO SCALE AND SHALL ONLY BE USED AS A GUIDE FOR THE PLACEMENT OF THE HARDWARE LISTED. THE CONTRACTOR SHALL CONFIRM ALL LOCATIONS IN THE FIELD WITH THE RESIDENT ENGINEER PRIOR TO INSTALLATION. LOCATIONS MAY BE REVISED AS A RESULT OF THE SITE SURVEY.
- THE CONTRACTOR SHALL VERIFY IN THE FIELD THAT THERE IS ADEQUATE SPACE IN THE CONDUIT FOR VIDEO DETECTION CABLE AND EQUIPMENT. IF ADDITIONAL CONDUIT INSTALLATION IS REQUIRED, ALL WORK ASSOCIATED FOR INSTALLATION SHALL BE INCIDENTAL TO ITEM 900.620 SPECIAL PROVISION (VIDEO VEHICLE DETECTION SYSTEM) (U.S. ROUTE 2 @ UNIVERSITY TERRACE). MATERIALS AND CONSTRUCTION TO BE IN ACCORDANCE WITH SECTION 678.

NOT TO SCALE

**TRAFFIC
SIGNAL
SYSTEM
SHEET #4**

PROJECT NAME: BURLINGTON-SOUTH BURLINGTON	PLOT DATE: 2/7/2012
PROJECT NUMBER: NH 2624(I)	DRAWN BY: STANTEC
FILE NAME: p06d216.dgn	CHECKED BY: STANTEC
PROJECT LEADER: JLL	DESIGNED BY: STANTEC
IPARM FILE: p06d216tsss04.i	98EET 96 OF 108

