

REHAB,
D.I.s, C.B.s OR M.H.s, CLASS I, II OR III.
SEE SHEET 105

CAST-IN-PLACE CONCRETE CURB,
TYPE B

STA. 52+35, LT
STA. 53+34, LT

REMOVAL OF EXISTING CURB

STA. 52+35, LT
STA. 53+34, LT

PORTLAND CEMENT CONCRETE
SIDEWALK, 5 INCH

STA. 52+35, LT
STA. 52+83, RT
STA. 53+34, LT
STA. 53+78, RT
STA. 54+74, LT
STA. 55+39, LT

DETECTABLE WARNING SURFACE

STA. 52+35, LT
STA. 52+83, RT
STA. 53+34, LT
STA. 53+78, RT
STA. 54+74, LT
STA. 55+39, LT

ADJUST ELEVATION OF
VALVE BOX

SEE SHEET 105

DURABLE 4 INCH WHITE LINE, TYPE I TAPE

(ALL LINES WILL INCLUDE EDGE LINE BREAKS
AND RADI I FOR SIDE ROADS)

STA. 52+00 TO 56+00, DASHED LT & RT
STA. 53+05, SOLID LT (PATCHEN RD.)
STA. 53+05, SOLID LT (LANE LINE PATCHEN RD.)
STA. 53+19, SOLID RT (LANE LINE HINESBURG RD.)
STA. 53+19, DOUBLE SOLID RT (HINESBURG RD.)
STA. 53+41 TO 54+57, SOLID LT
STA. 53+81 TO 56+00, SOLID RT
STA. 55+55 TO 56+00, SOLID LT

DURABLE 4 INCH YELLOW LINE, TYPE I TAPE

(ALL LINES WILL INCLUDE C BREAKS FOR SIDE ROADS)

STA. 52+00 TO 52+60, SOLID LT & RT
STA. 53+05, DOUBLE SOLID LT (PATCHEN RD.)
STA. 53+19, DOUBLE SOLID RT (HINESBURG RD.)
STA. 53+56 TO 54+03, SOLID LT & RT
STA. 54+03 TO 54+83, DOUBLE SOLID LT & RT
STA. 55+02, DOUBLE SOLID LT (COTTAGE GROVE AVE.)
STA. 55+25 TO 56+00, SOLID LT & RT

DURABLE 8 INCH YELLOW LINE, TYPE I TAPE
STA. 54+06 TO 54+53, LT & RT (DIAGONALS)
SEE SHEET 107

DURABLE 24 INCH STOP BAR, TYPE I TAPE

STA. 52+55, RT
STA. 53+05, LT (PATCHEN RD.)
STA. 53+19, RT (HINESBURG RD.)
STA. 53+60, LT
STA. 55+02, LT (COTTAGE GROVE AVE.)

DURABLE LETTER OR SYMBOL, TYPE I TAPE

STA. 53+05, LT (PATCHEN RD) ARROW (3)
STA. 53+19, RT (HINESBURG RD) ARROW (3)
STA. 53+19, RT (HINESBURG RD) "ONLY"
STA. 55+02, LT (COTTAGE GROVE AVE) "STOP"

DURABLE CROSSWALK MARKING,
TYPE I TAPE

STA. 52+64, LT - RT
STA. 53+05, LT (PATCHEN RD)
STA. 53+19, RT (HINESBURG RD)
STA. 53+50, LT - RT
STA. 55+02, LT (COTTAGE GROVE AVE)

TEMPORARY 4 INCH WHITE LINE, PAINT
(ALL LINES WILL INCLUDE EDGE LINE BREAKS
AND RADI I FOR SIDE ROADS)

STA. 52+00 TO 56+00, DASHED LT & RT
STA. 53+05, SOLID LT (PATCHEN RD.)
STA. 53+05, SOLID LT (LANE LINE PATCHEN RD.)
STA. 53+19, SOLID RT (LANE LINE HINESBURG RD.)
STA. 53+19, DOUBLE SOLID RT (HINESBURG RD.)
STA. 53+41 TO 54+57, SOLID LT
STA. 53+81 TO 56+00, SOLID RT
STA. 55+55 TO 56+00, SOLID LT

TEMPORARY 4 INCH YELLOW LINE, PAINT
(ALL LINES WILL INCLUDE C BREAKS FOR SIDE ROADS)

STA. 52+00 TO 52+60, SOLID LT & RT
STA. 53+05, DOUBLE SOLID LT (PATCHEN RD.)
STA. 53+19, DOUBLE SOLID RT (HINESBURG RD.)
STA. 53+56 TO 54+03, SOLID LT & RT
STA. 54+03 TO 54+83, DOUBLE SOLID LT & RT
STA. 55+02, DOUBLE SOLID LT (COTTAGE GROVE AVE.)
STA. 55+25 TO 56+00, SOLID LT & RT

TEMPORARY 8 INCH YELLOW LINE, PAINT

STA. 54+06 TO 54+53, LT & RT (DIAGONALS)
SEE SHEET 107

TEMPORARY 24 INCH STOP BAR, PAINT

STA. 52+55, RT
STA. 53+05, LT (PATCHEN RD.)
STA. 53+19, RT (HINESBURG RD.)
STA. 53+60, LT
STA. 55+02, LT (COTTAGE GROVE AVE.)

TEMPORARY LETTER OR SYMBOL, PAINT

STA. 53+05, LT (PATCHEN RD) ARROW (3)
STA. 53+19, RT (HINESBURG RD) ARROW (3)
STA. 53+19, RT (HINESBURG RD) "ONLY"
STA. 55+02, LT (COTTAGE GROVE AVE) "STOP"

PAVED DRIVE

CONSTRUCT SIDEWALK RAMP, TYPE 6

CONSTRUCT SIDEWALK RAMP, TYPE 6

CONSTRUCT SIDEWALK RAMP, TYPE 6

CONSTRUCT SIDEWALK RAMP, TYPE 6

CONSTRUCT SIDEWALK RAMP, TYPE 6

CONSTRUCT SIDEWALK RAMP, TYPE 6

CONSTRUCT SIDEWALK RAMP, TYPE 6

CONSTRUCT SIDEWALK RAMP, TYPE 6

CONSTRUCT SIDEWALK RAMP, TYPE 6

CONSTRUCT SIDEWALK RAMP, TYPE 6

CONSTRUCT SIDEWALK RAMP, TYPE 6

CONSTRUCT SIDEWALK RAMP, TYPE 6

CONSTRUCT SIDEWALK RAMP, TYPE 6

CONSTRUCT SIDEWALK RAMP, TYPE 6

CONSTRUCT SIDEWALK RAMP, TYPE 6

CONSTRUCT SIDEWALK RAMP, TYPE 6

CONSTRUCT SIDEWALK RAMP, TYPE 6

CONSTRUCT SIDEWALK RAMP, TYPE 6

CONSTRUCT SIDEWALK RAMP, TYPE 6

CONSTRUCT SIDEWALK RAMP, TYPE 6

CONSTRUCT SIDEWALK RAMP, TYPE 6

CONSTRUCT SIDEWALK RAMP, TYPE 6

CONSTRUCT SIDEWALK RAMP, TYPE 6

CONSTRUCT SIDEWALK RAMP, TYPE 6

CONSTRUCT SIDEWALK RAMP, TYPE 6

CONSTRUCT SIDEWALK RAMP, TYPE 6

CONSTRUCT SIDEWALK RAMP, TYPE 6

CONSTRUCT SIDEWALK RAMP, TYPE 6

CONSTRUCT SIDEWALK RAMP, TYPE 6

CONSTRUCT SIDEWALK RAMP, TYPE 6

CONSTRUCT SIDEWALK RAMP, TYPE 6

CONSTRUCT SIDEWALK RAMP, TYPE 6

CONSTRUCT SIDEWALK RAMP, TYPE 6

CONSTRUCT SIDEWALK RAMP, TYPE 6

CONSTRUCT SIDEWALK RAMP, TYPE 6

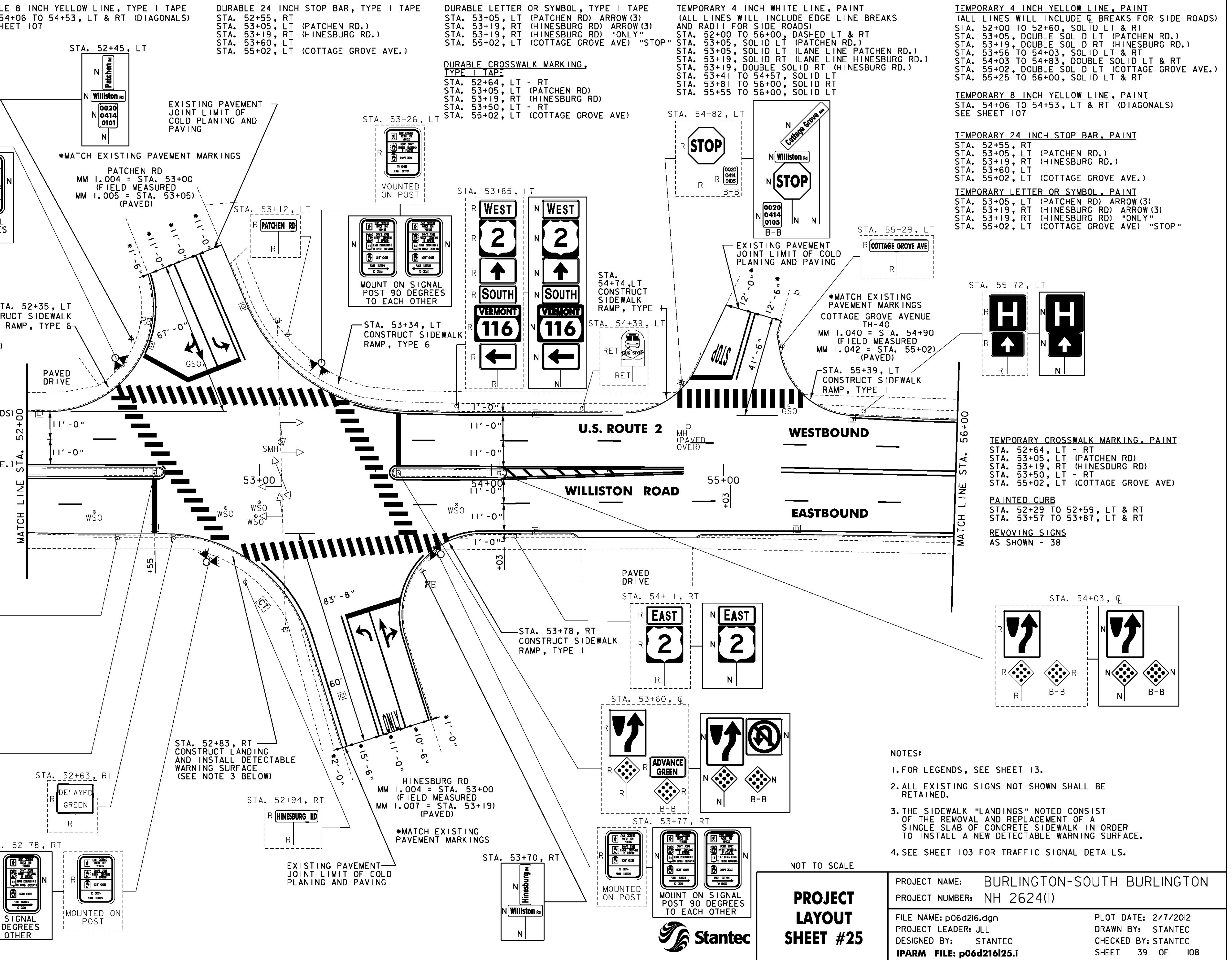
CONSTRUCT SIDEWALK RAMP, TYPE 6

CONSTRUCT SIDEWALK RAMP, TYPE 6

CONSTRUCT SIDEWALK RAMP, TYPE 6

CONSTRUCT SIDEWALK RAMP, TYPE 6

CONSTRUCT SIDEWALK RAMP, TYPE 6



- NOTES:
- FOR LEGENDS, SEE SHEET 13.
 - ALL EXISTING SIGNS NOT SHOWN SHALL BE RETAINED.
 - THE SIDEWALK "LANDINGS" NOTED CONSIST OF THE REMOVAL AND REPLACEMENT OF A SINGLE SLAB OF CONCRETE SIDEWALK IN ORDER TO INSTALL A NEW DETECTABLE WARNING SURFACE.
 - SEE SHEET 103 FOR TRAFFIC SIGNAL DETAILS.

NOT TO SCALE

PROJECT LAYOUT SHEET #25

PROJECT NAME: BURLINGTON-SOUTH BURLINGTON
PROJECT NUMBER: NH 2624(I)

FILE NAME: p06d216.dgn
PROJECT LEADER: JLL
DESIGNED BY: STANTEC
IPARM FILE: p06d216125.i

PLOT DATE: 2/7/2012
DRAWN BY: STANTEC
CHECKED BY: STANTEC
SHEET 39 OF 108

