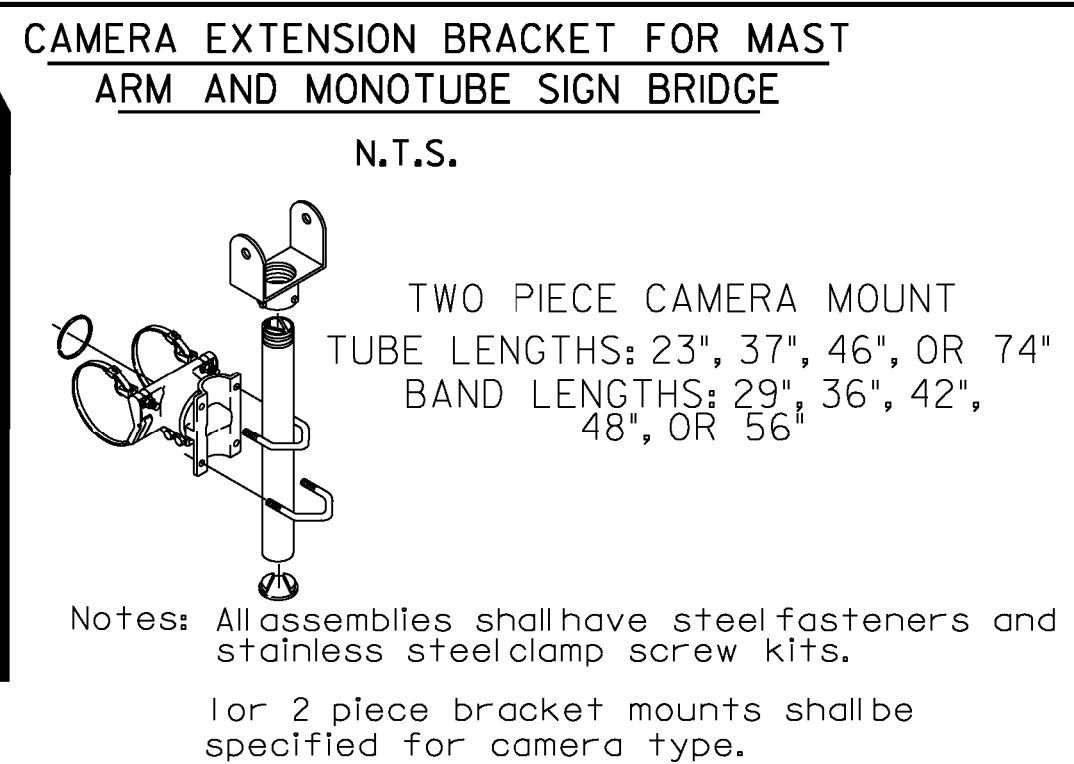


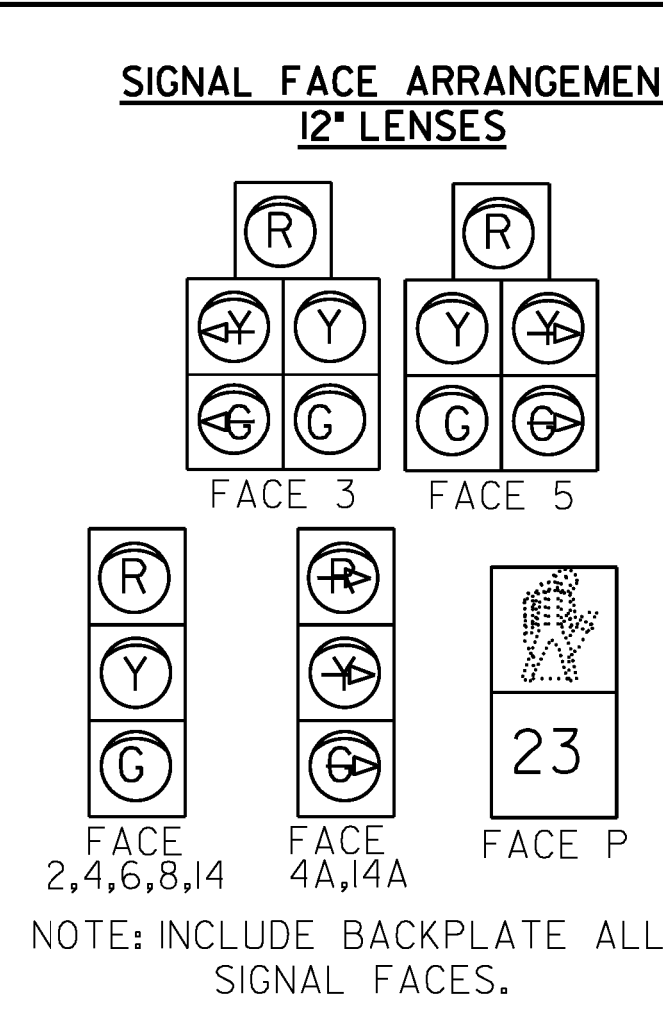
EXISTING	NEW	LEGEND
		MAST ARM POLE (MP)
		STRAIN POLE (SP)
		CONTROLLER CABINET
		PULL BOX (PB) / JUNCTION BOX (JB)
		SIGNAL HEAD
		CONDUIT
		PEDESTAL POST (PP)
		MAST ARM MOUNTED SIGN
		STANCHION
		VIDEO DETECTOR
		VIDEO DETECTION AREA
		OPTICAL DETECTOR
		REMOTE RADIO
		ILLUMINATED LED TRAFFIC SIGN

SEE SHEET 156 FOR MAST ARM CROSS SECTION  
 SEE SHEETS 26-66 FOR PAVEMENT MARKINGS  
 SEE SHEETS 136-140 FOR SIGNING LAYOUT  
 ALL SIGNALS WITHIN THE MAIN STREET SIGNAL SYSTEM ARE COORDINATED AND A PART OF THE WIRELESS RADIO INTERCONNECT  
 SEE SHEETS 151, 152, 153 - TRAFFIC SIGNAL SHEETS NO. 2, 3 AND 4 FOR THE OTHER LOCATIONS.

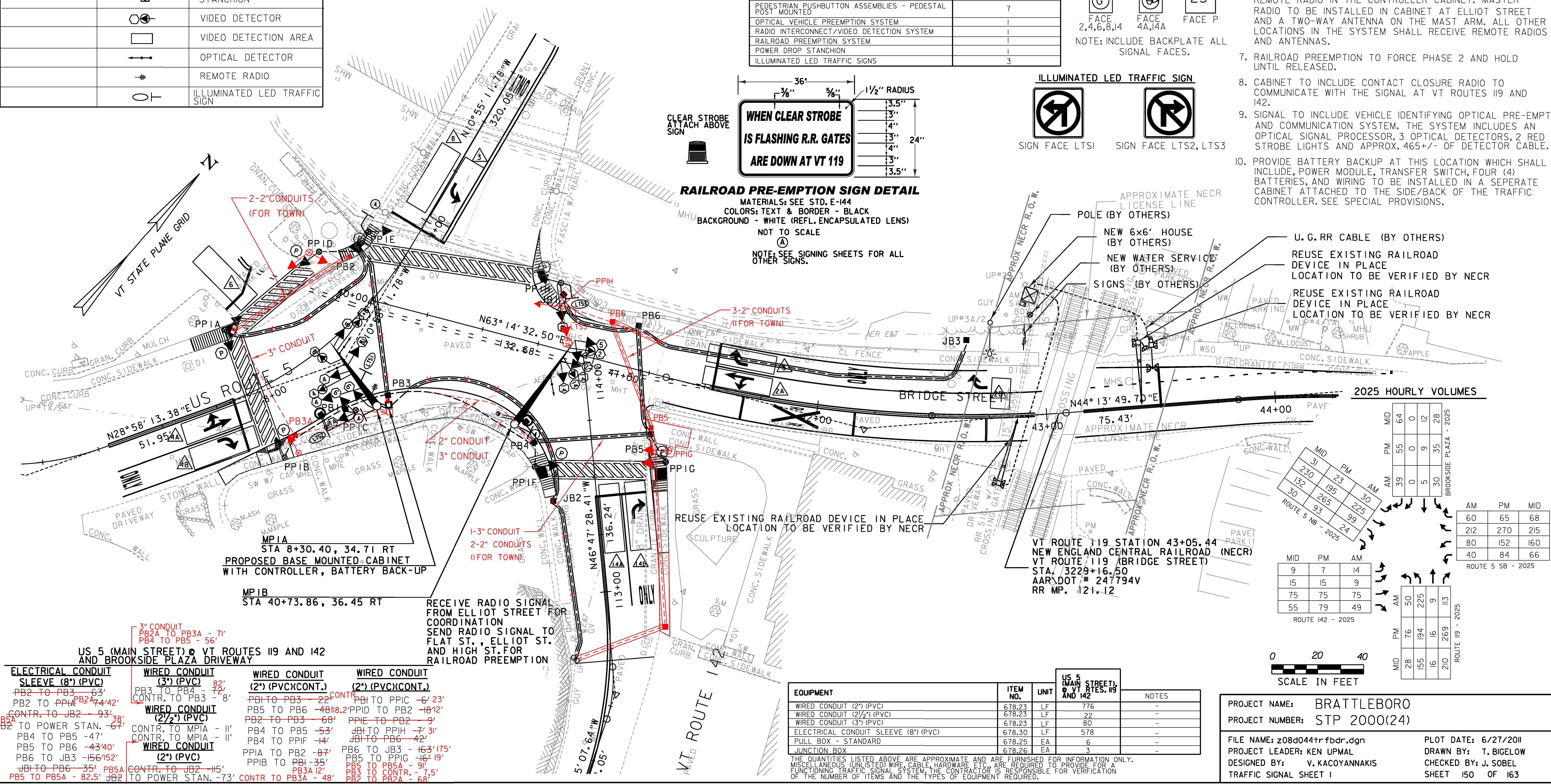
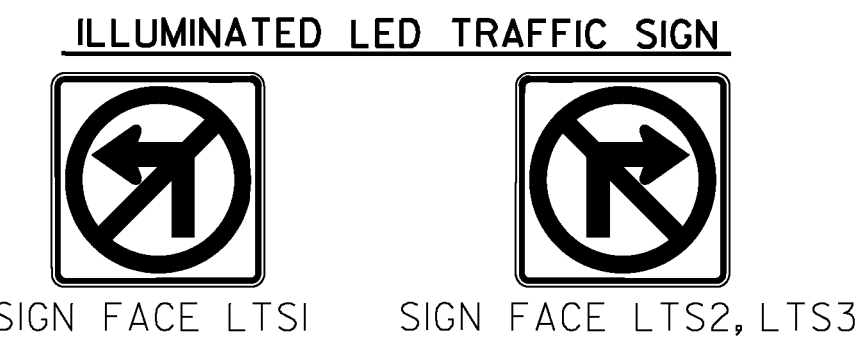
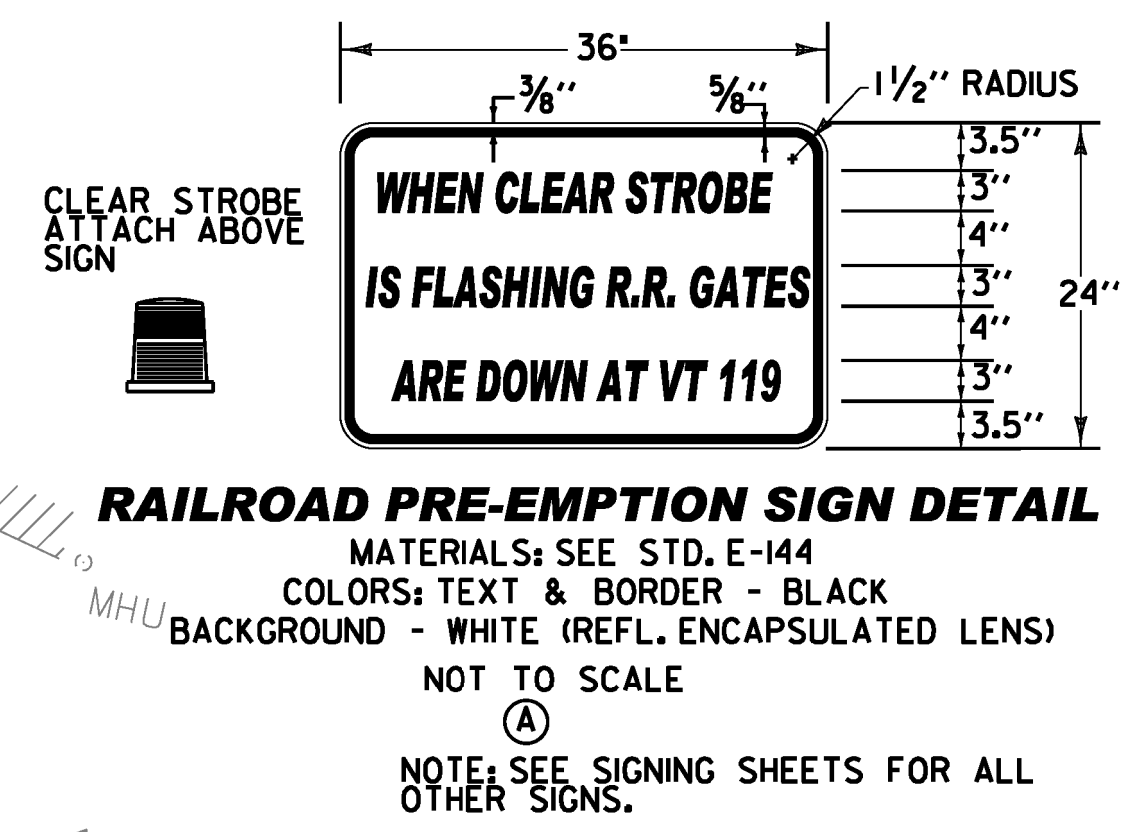


**MAJOR EQUIPMENT LIST**

EQUIPMENT ITEM NO. 678.15	US 5 (MAIN STREET) @ VT ROUTES 142 AND 119
CANTILEVER POLES W/MAST ARMS	2
PEDESTAL POSTS	8
NEW 12" TRAFFIC SIGNAL HEADS W/ TUNNEL VISORS, DISCONNECT HANGERS, BACKPLATES AND MOUNTING HARDWARE	
ONE-WAY, 3-SECTION	3
ONE-WAY, 5-SECTION	1
TWO-WAY, 3-SECTION	1
TWO WAY, 3-SECTION/5-SECTION	1
ONE-WAY, 3-SECTION SIDE-MOUNTED - POLE	1
ONE-WAY, 3-SECTION PEDESTAL TOP-MOUNTED	1
CONTROLLER/CABINET	1
ACCESSIBLE PEDESTRIAN SIGNAL	
PEDESTAL POST TOP MOUNTED, ONE-WAY	6
PEDESTAL POST TOP MOUNTED, TWO-WAY	1
PEDESTRIAN PUSHBUTTON ASSEMBLIES - PEDESTAL POST MOUNTED	7
OPTICAL VEHICLE PREEMPTION SYSTEM	1
RADIO INTERCONNECT/VIDEO DETECTION SYSTEM	1
RAILROAD PREEMPTION SYSTEM	1
POWER DROP STANCHION	1
ILLUMINATED LED TRAFFIC SIGNS	3



- NOTES:**
- OFFSET IS REFERENCED AT THE END OF PHASE 2.
  - SPLITS AND OFFSETS ARE SHOWN IN SECONDS.
  - VIDEO DETECTION AREAS 2A, 3, 4A, 4B, 5, 6, 8, 14A AND 14B ARE IN NON-LOCK PRESENCE MODE. VIDEO DETECTOR AREA 2B IS IN DELAY MODE, 5 SECONDS, LOCK.
  - SIGNAL TO COORDINATE WITH MAIN STREET SYSTEM AT ELLIOT STREET AND FLAT STREET BY INTERCONNECT VIA SPREAD SPECTRUM RADIO.
  - ANY PULL BOX OR JUNCTION BOX WITHIN SIDEWALK SHALL HAVE A SKID RESISTANT COVER.
  - SPREAD SPECTRUM RADIO ASSEMBLY TO RECEIVE SIGNAL TO COORDINATE WITH FLAT STREET, ELLIOT STREET, AND ROUTE 9 (HIGH STREET). INSTALL ANTENNA ON MP1A AND REMOTE RADIO IN THE CONTROLLER CABINET. MASTER RADIO TO BE INSTALLED IN CABINET AT ELLIOT STREET AND A TWO-WAY ANTENNA ON THE MAST ARM. ALL OTHER LOCATIONS IN THE SYSTEM SHALL RECEIVE REMOTE RADIOS AND ANTENNAS.
  - RAILROAD PREEMPTION TO FORCE PHASE 2 AND HOLD UNTIL RELEASED.
  - CABINET TO INCLUDE CONTACT CLOSURE RADIO TO COMMUNICATE WITH THE SIGNAL AT VT ROUTES 119 AND 142.
  - SIGNAL TO INCLUDE VEHICLE IDENTIFYING OPTICAL PRE-EMPT. AND COMMUNICATION SYSTEM. THE SYSTEM INCLUDES AN OPTICAL SIGNAL PROCESSOR, 3 OPTICAL DETECTORS, 2 RED STROBE LIGHTS AND APPROX. 465+/-' OF DETECTOR CABLE.
  - PROVIDE BATTERY BACKUP AT THIS LOCATION WHICH SHALL INCLUDE, POWER MODULE, TRANSFER SWITCH, FOUR (4) BATTERIES, AND WIRING TO BE INSTALLED IN A SEPARATE CABINET ATTACHED TO THE SIDE/BACK OF THE TRAFFIC CONTROLLER. SEE SPECIAL PROVISIONS.



**2025 HOURLY VOLUMES**

ROUTE	AM	PM	MID
BROOKSIDE PLAZA - 2025	39	55	64
ROUTE 5 NB - 2025	30	5	9
ROUTE 5 SB - 2025	40	84	66
ROUTE 142 - 2025	75	75	75
ROUTE 119 - 2025	28	76	50

**ELECTRICAL CONDUIT SLEEVE (8") (PVC)**

**WIRED CONDUIT (3") (PVC)**

**WIRED CONDUIT (2") (PVC)(CONT.)**

**WIRED CONDUIT (2") (PVC)(CONT.)**

US 5 (MAIN STREET) @ VT ROUTES 119 AND 142 AND BROOKSIDE PLAZA DRIVEWAY

**EQUIPMENT**

EQUIPMENT	ITEM NO.	UNIT	US 5 (MAIN STREET) @ VT RTES. 119 AND 142	NOTES
WIRED CONDUIT (2") (PVC)	678.23	LF	776	-
WIRED CONDUIT (2 1/2") (PVC)	678.23	LF	22	-
WIRED CONDUIT (3") (PVC)	678.23	LF	80	-
ELECTRICAL CONDUIT SLEEVE (8") (PVC)	678.30	LF	578	-
PULL BOX - STANDARD	678.25	EA	6	-
JUNCTION BOX	678.26	EA	3	-

THE QUANTITIES LISTED ABOVE ARE APPROXIMATE AND ARE FURNISHED FOR INFORMATION ONLY. MISCELLANEOUS (UNLISTED) WIRE, CABLE, HARDWARE ETC. ARE REQUIRED TO PROVIDE FOR A FUNCTIONING TRAFFIC SIGNAL SYSTEM. THE CONTRACTOR IS RESPONSIBLE FOR VERIFICATION OF THE NUMBER OF ITEMS AND THE TYPES OF EQUIPMENT REQUIRED.

**PROJECT NAME:** BRATTLEBORO  
**PROJECT NUMBER:** STP 2000(24)  
**FILE NAME:** z08d044trfbdr.dgn  
**PROJECT LEADER:** KEN UPMAL  
**DESIGNED BY:** V. KACOYANNAKIS  
**TRAFFIC SIGNAL SHEET 1**  
**PLOT DATE:** 6/27/2011  
**DRAWN BY:** T. BIGELOW  
**CHECKED BY:** J. SOBEL  
**SHEET 150 OF 163**