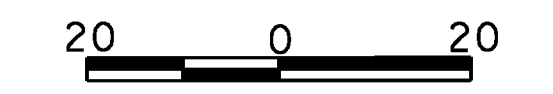
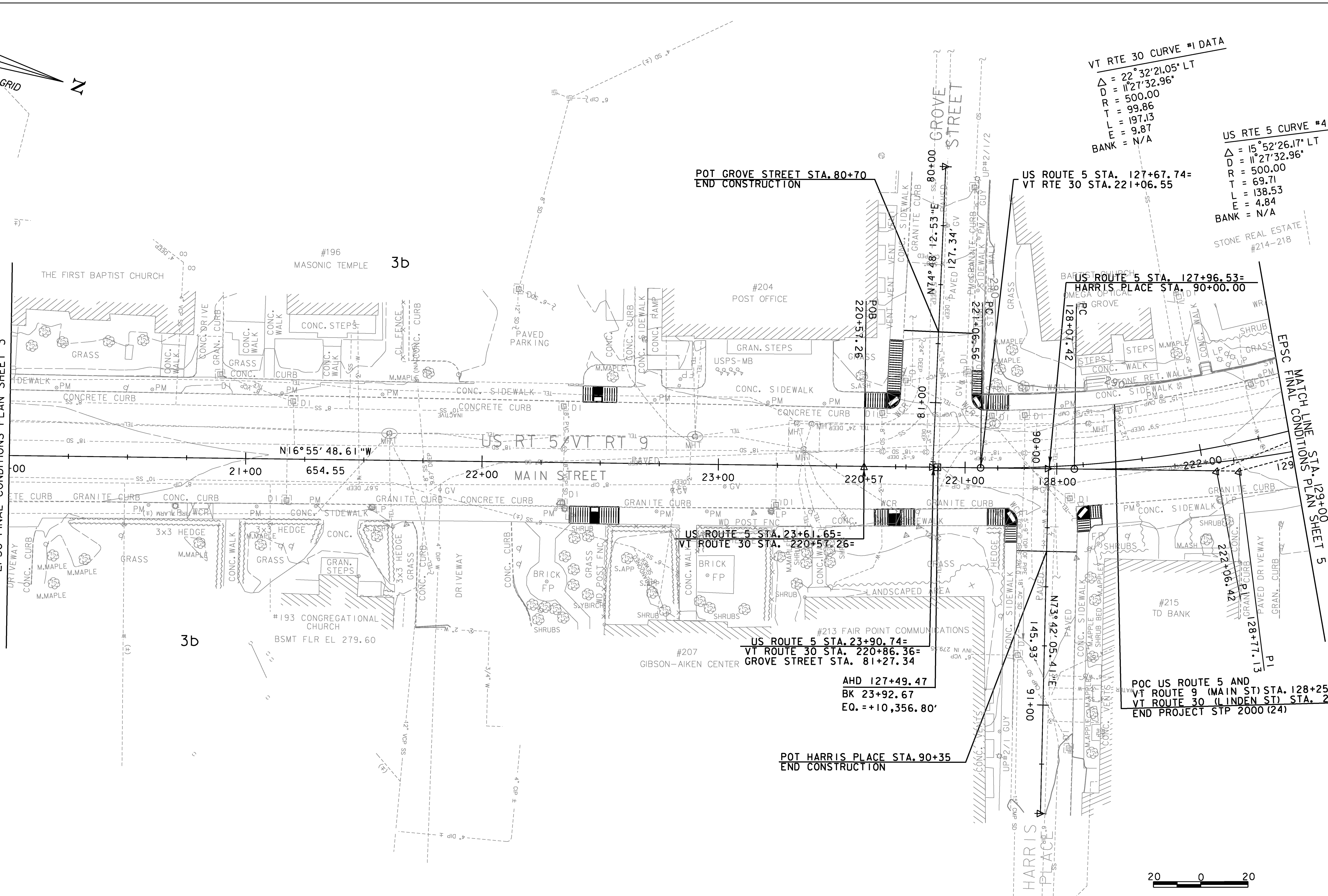


VT RTE 30 CURVE #1 DATA
 $\Delta = 22^\circ 32' 21.05''$ LT
 $D = 11^\circ 27' 32.96''$
 $R = 500.00$
 $T = 99.86$
 $L = 197.13$
 $E = 9.87$
 BANK = N/A

US RTE 5 CURVE #4 DATA
 $\Delta = 15^\circ 52' 26.17''$ LT
 $D = 11^\circ 27' 32.96''$
 $R = 500.00$
 $T = 69.71$
 $L = 138.53$
 $E = 4.84$
 BANK = N/A

MATCH LINE STA. 20+00.00
EPSC FINAL CONDITIONS PLAN SHEET 3

MATCH LINE STA. 129+00
EPSC FINAL CONDITIONS PLAN SHEET 5



PROJECT NAME:	BRATTLEBORO
PROJECT NUMBER:	STP 2000(24)
FILE NAME:	z08d044bdr_epscfinal.dgn
DESIGNED BY:	E. ATKINS
EPSC FINAL CONDITIONS PLAN SHEET 4	
PLOT DATE:	3/12/2010
DRAWN BY:	M. BONADIO
CHECKED BY:	D. SPENCER
SHEET	129 OF 163