

REMOVING MEDIUM TREES

~~US RTE 5 16+54.8 LT~~
~~US RTE 5 17+29.3 LT~~

**REMOVE EXISTING PAVEMENT
(COMMON EXCAVATION)**

US RTE 5 17+35.0 RT ~ 18+56.5 RT
 US RTE 5 17+36.8 LT ~ 17+79.1 LT

**REMOVE EXISTING CONCRETE SIDEWALK
(COMMON EXCAVATION)**

US RTE 5 15+66.6 LT ~ VT RTE 9 71+12.9 RT
 VT RTE 9 71+04.0 LT ~ US RTE 5 18+50.2 LT

EXISTING DRAINAGE

US RTE 5 17+50.3 LT ~ EXISTING DIREHAB
 (REMOVE FRAME AND GRATE, INSTALL NEW FRAME AND COVER)

US RTE 5 17+43.1 RT ~ EXISTING DIREHAB
 (REMOVE FRAME AND GRATE, INSTALL NEW FRAME AND COVER)

US RTE 5 18+48.9 RT ~ EXISTING DIREHAB
 (REMOVE FRAME AND GRATE, INSTALL NEW FRAME AND COVER)

NEW DRAINAGE

- ③ US RTE 5 17+36.5 LT ~ 17+50.3 LT
 NEW 8" X 14" CPEP (SL) W/DI@ US RTE 5 17+36.5 LT (INV=283.29)
- ④ US RTE 5 17+40.7 RT ~ 17+43.1 RT
 NEW 8" X 9" CPEP (SL) W/DI@ US RTE 5 17+40.7 RT (INV=283.29)
- ⑤ US RTE 5 18+59.1 RT ~ 18+48.9 RT
 NEW 8" X 10" CPEP (SL) W/DI@ US RTE 5 18+59.1 RT (INV=284.15)

**REHAB, DROP INLETS, CATCH BASINS,
OR MANHOLES, CLASS +II**

US RTE 5 17+50.3 LT
 US RTE 5 17+43.1 RT
 US RTE 5 18+48.9 RT

VERTICAL GRANITE CURB

US RTE 5 17+29.3 LT ~ 17+62.2 LT
 US RTE 5 17+66.0 LT ~ VT RTE 9 71+33.3 RT

REMOVING AND RESETTING CURB

~~US RTE 5 15+66.6 LT ~ 17+29.0 LT~~
~~US RTE 18+37.1 LT ~ 18+42.5 LT~~
~~VT RTE 9 71+12.9 RT ~ 71+18.9 RT~~
~~VT RTE 9 71+23.0 RT ~ 71+33.3 RT~~
~~VT RTE 9 71+12.7 LT ~ 71+17.5 LT~~

REMOVAL OF EXISTING CURB
 US RTE 5 17+29.0 LT ~ VT RTE 9 71+33.3 RT
 US RTE 5 17+35.0 RT ~ 18+56.8 RT

**PORTLAND CEMENT CONCRETE
SIDEWALK, 5 INCH**

US RTE 5 15+66.6 LT ~ VT RTE 9 71+12.9 RT
 US RTE 5 17+35.0 RT ~ 18+56.5 RT
 VT RTE 9 71+04.0 LT ~ US RTE 5 18+50.2 LT

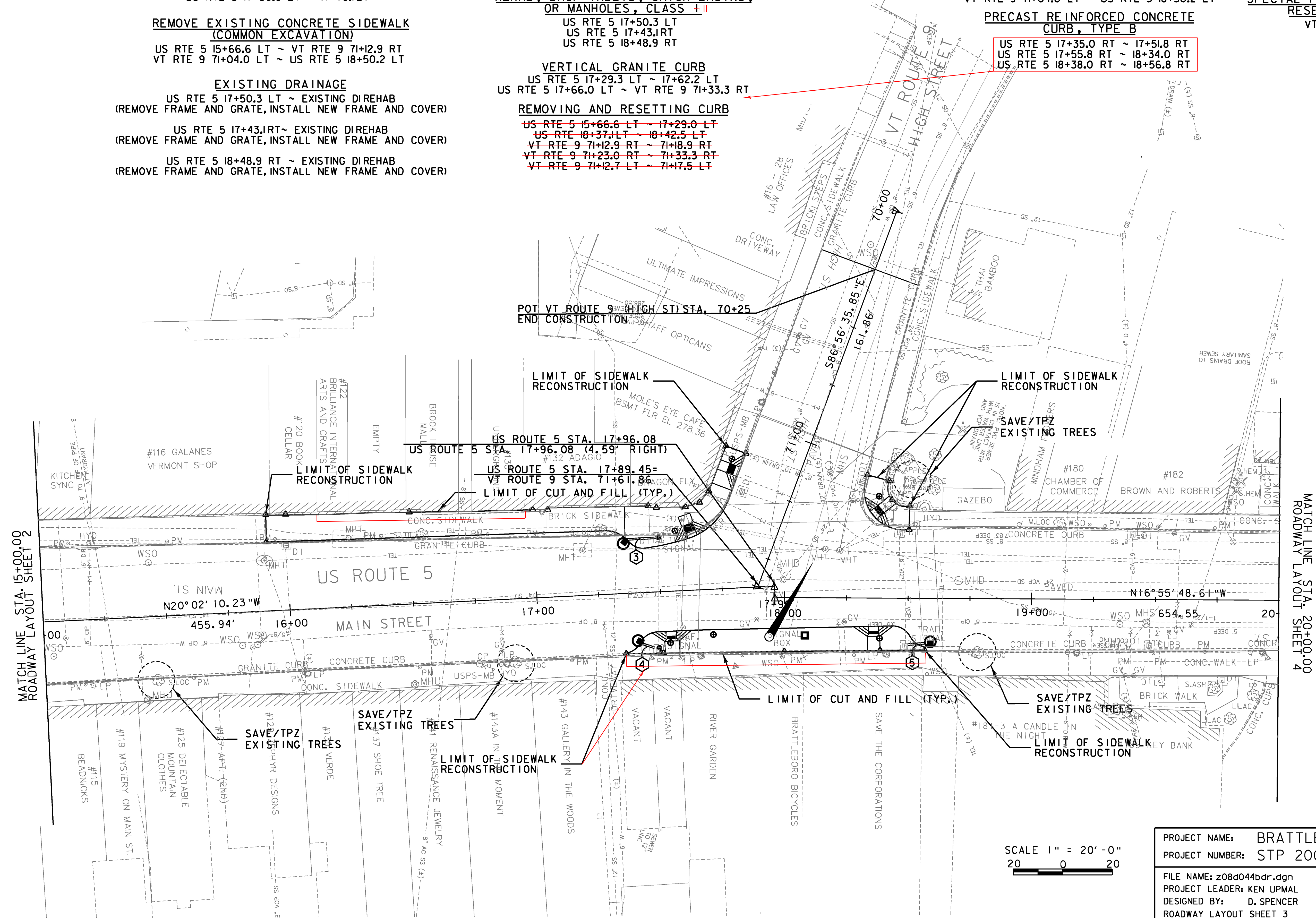
**PRECAST REINFORCED CONCRETE
CURB, TYPE B**

US RTE 5 17+35.0 RT ~ 17+51.8 RT
 US RTE 5 17+55.8 RT ~ 18+34.0 RT
 US RTE 5 18+38.0 RT ~ 18+56.8 RT

**CONCRETE SIDEWALK RAMPS W/
DETECTABLE WARNING SURFACE
(SEE NOTE ON ROADWAY LAYOUT SHEET 1)**

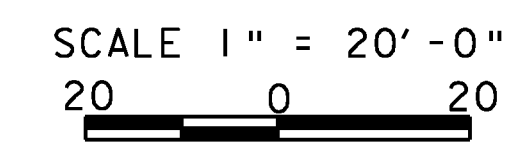
US RTE 5 17+53.8 RT (TYPE 5)
 US RTE 5 17+64.2 LT (TYPE 5)
 US RTE 5 18+35.9 RT (TYPE 5)
 US RTE 5 18+35.9 LT (TYPE 5)
 VT RTE 9 71+20.8 RT (TYPE 5)

**SPECIAL PROVISION (REMOVE AND
RESET USPS MAILBOX)
VT RTE 9 71+15.7 RT**



MATCH LINE STA. 15+00.00
ROADWAY LAYOUT SHEET 2

MATCH LINE STA. 20+00.00
ROADWAY LAYOUT SHEET 4



| | | | | | |
|-----------------|--------------|------------------------|----------------|-------------|-----------------|
| PROJECT NAME: | BRATTLEBORO | FILE NAME: | z08d044bdr.dgn | PLOT DATE: | 4/8/2010 |
| PROJECT NUMBER: | STP 2000(24) | PROJECT LEADER: | KEN UPMAL | DRAWN BY: | T. BIGELOW |
| | | DESIGNED BY: | D. SPENCER | CHECKED BY: | V. KACOYANNAKIS |
| | | ROADWAY LAYOUT SHEET 3 | | SHEET | 104 OF 163 |