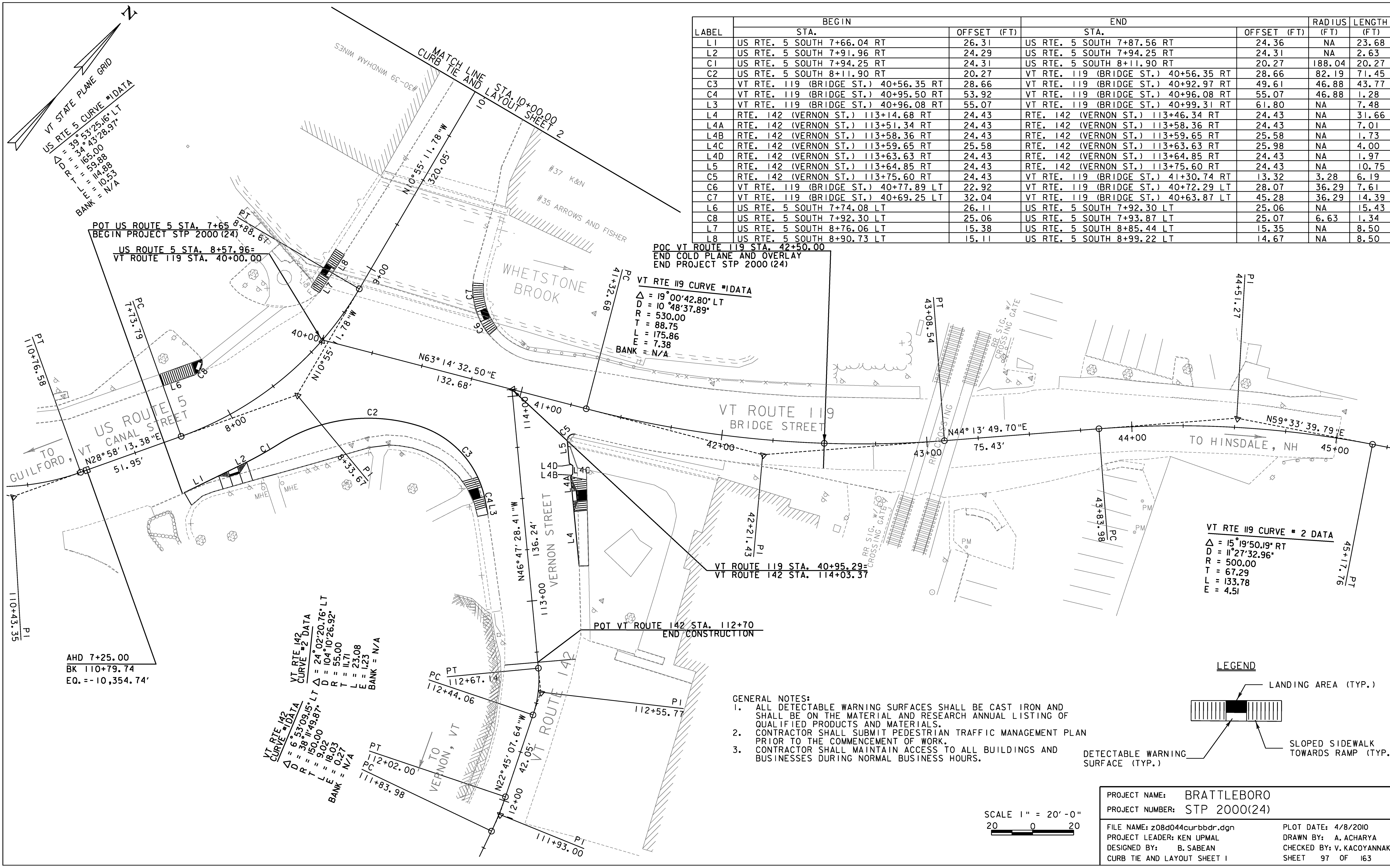


VT STATE PLANE GRID
 US RTE 5 CURVE #1 DATA
 $\Delta = 39^{\circ}53'25.16''$ LT
 $D = 34^{\circ}43'28.37''$ LT
 $R = 163.00$
 $T = 59.88$
 $L = 10.53$
 $E = N/A$
 $BANK = N/A$

LABEL	BEGIN		END		RADIUS (FT)	LENGTH (FT)
	STA.	OFFSET (FT)	STA.	OFFSET (FT)		
L1	US RTE. 5 SOUTH 7+66.04 RT	26.31	US RTE. 5 SOUTH 7+87.56 RT	24.36	NA	23.68
L2	US RTE. 5 SOUTH 7+91.96 RT	24.29	US RTE. 5 SOUTH 7+94.25 RT	24.31	NA	2.63
C1	US RTE. 5 SOUTH 7+94.25 RT	24.31	US RTE. 5 SOUTH 8+11.90 RT	20.27	188.04	20.27
C2	US RTE. 5 SOUTH 8+11.90 RT	20.27	VT RTE. 119 (BRIDGE ST.) 40+56.35 RT	28.66	82.19	71.45
C3	VT RTE. 119 (BRIDGE ST.) 40+56.35 RT	28.66	VT RTE. 119 (BRIDGE ST.) 40+92.97 RT	49.61	46.88	43.77
C4	VT RTE. 119 (BRIDGE ST.) 40+92.97 RT	53.92	VT RTE. 119 (BRIDGE ST.) 40+96.08 RT	55.07	46.88	1.28
L3	VT RTE. 119 (BRIDGE ST.) 40+96.08 RT	55.07	VT RTE. 119 (BRIDGE ST.) 40+99.31 RT	61.80	NA	7.48
L4	RTE. 142 (VERNON ST.) 113+14.68 RT	24.43	RTE. 142 (VERNON ST.) 113+46.34 RT	24.43	NA	31.66
L4A	RTE. 142 (VERNON ST.) 113+51.34 RT	24.43	RTE. 142 (VERNON ST.) 113+58.36 RT	24.43	NA	7.01
L4B	RTE. 142 (VERNON ST.) 113+58.36 RT	24.43	RTE. 142 (VERNON ST.) 113+59.65 RT	25.58	NA	1.73
L4C	RTE. 142 (VERNON ST.) 113+59.65 RT	25.58	RTE. 142 (VERNON ST.) 113+63.63 RT	25.98	NA	4.00
L4D	RTE. 142 (VERNON ST.) 113+63.63 RT	24.43	RTE. 142 (VERNON ST.) 113+64.85 RT	24.43	NA	1.97
L5	RTE. 142 (VERNON ST.) 113+64.85 RT	24.43	RTE. 142 (VERNON ST.) 113+75.60 RT	24.43	NA	10.75
C5	RTE. 142 (VERNON ST.) 113+75.60 RT	24.43	VT RTE. 119 (BRIDGE ST.) 41+30.74 RT	13.32	3.28	6.19
C6	VT RTE. 119 (BRIDGE ST.) 40+77.89 LT	22.92	VT RTE. 119 (BRIDGE ST.) 40+72.29 LT	28.07	36.29	7.61
C7	VT RTE. 119 (BRIDGE ST.) 40+69.25 LT	32.04	VT RTE. 119 (BRIDGE ST.) 40+63.87 LT	45.28	36.29	14.39
L6	US RTE. 5 SOUTH 7+74.08 LT	26.11	US RTE. 5 SOUTH 7+92.30 LT	25.06	NA	15.43
C8	US RTE. 5 SOUTH 7+92.30 LT	25.06	US RTE. 5 SOUTH 7+93.87 LT	25.07	6.63	1.34
L7	US RTE. 5 SOUTH 8+76.06 LT	15.38	US RTE. 5 SOUTH 8+85.44 LT	15.35	NA	8.50
L8	US RTE. 5 SOUTH 8+90.73 LT	15.11	US RTE. 5 SOUTH 8+99.22 LT	14.67	NA	8.50



VT RTE 119 CURVE #1 DATA
 $\Delta = 19^{\circ}00'42.80''$ LT
 $D = 10^{\circ}48'37.89''$
 $R = 530.00$
 $T = 88.75$
 $L = 175.86$
 $E = 7.38$
 $BANK = N/A$

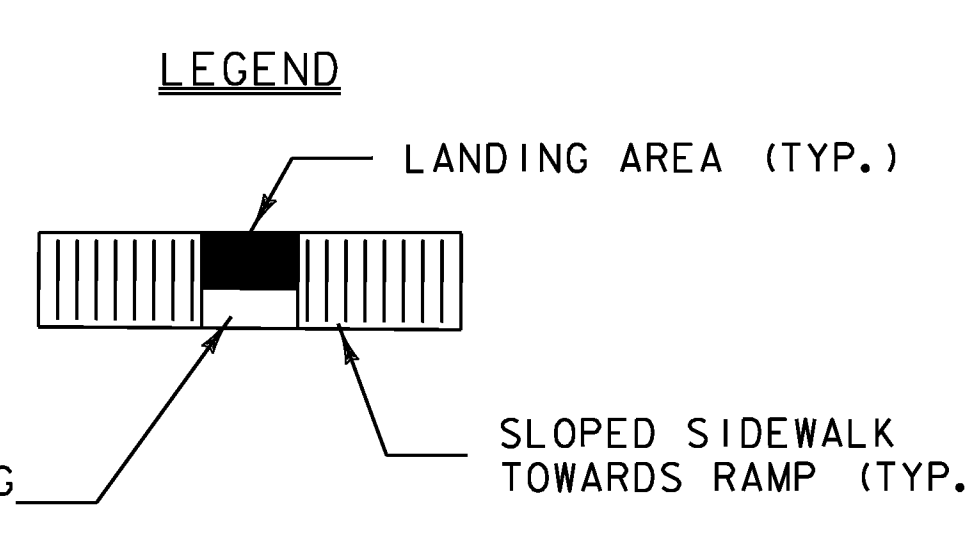
VT RTE 119 CURVE # 2 DATA
 $\Delta = 15^{\circ}19'50.19''$ RT
 $D = 11^{\circ}27'32.96''$
 $R = 500.00$
 $T = 67.29$
 $L = 133.78$
 $E = 4.51$

AHD 7+25.00
 BK 110+79.74
 EQ. = -10,354.74'

VT RTE 142 CURVE #2 DATA
 $\Delta = 24^{\circ}02'20.76''$ LT
 $D = 104^{\circ}10'26.92''$
 $R = 55.00$
 $T = 11.71$
 $L = 23.08$
 $E = 1.23$
 $BANK = N/A$

VT RTE 142 CURVE #1 DATA
 $\Delta = 6^{\circ}53'09.15''$ LT
 $D = 38^{\circ}11'49.87''$
 $R = 150.00$
 $T = 9.02$
 $L = 18.03$
 $E = 0.27$
 $BANK = N/A$

- GENERAL NOTES:
1. ALL DETECTABLE WARNING SURFACES SHALL BE CAST IRON AND SHALL BE ON THE MATERIAL AND RESEARCH ANNUAL LISTING OF QUALIFIED PRODUCTS AND MATERIALS.
 2. CONTRACTOR SHALL SUBMIT PEDESTRIAN TRAFFIC MANAGEMENT PLAN PRIOR TO THE COMMENCEMENT OF WORK.
 3. CONTRACTOR SHALL MAINTAIN ACCESS TO ALL BUILDINGS AND BUSINESSES DURING NORMAL BUSINESS HOURS.



SCALE 1" = 20'-0"
 20 0 20

PROJECT NAME: BRATTLEBORO	PLOT DATE: 4/8/2010
PROJECT NUMBER: STP 2000(24)	DRAWN BY: A. ACHARYA
FILE NAME: z08d044curbbdr.dgn	CHECKED BY: V. KACOYANNAKIS
PROJECT LEADER: KEN UPMAL	SHEET 97 OF 163
DESIGNED BY: B. SABEAN	
CURB TIE AND LAYOUT SHEET 1	