

GPS CONTROL POINTS

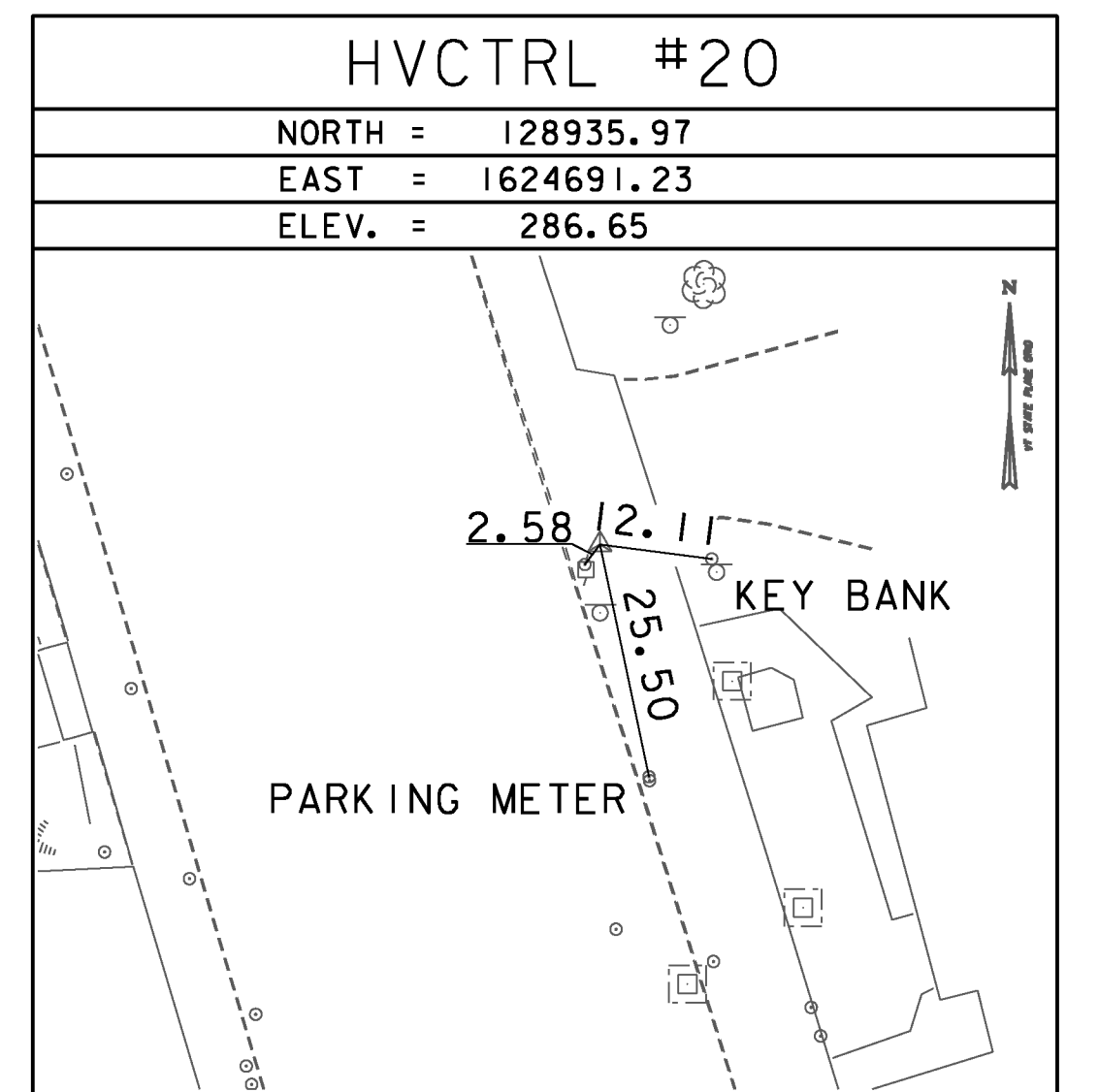
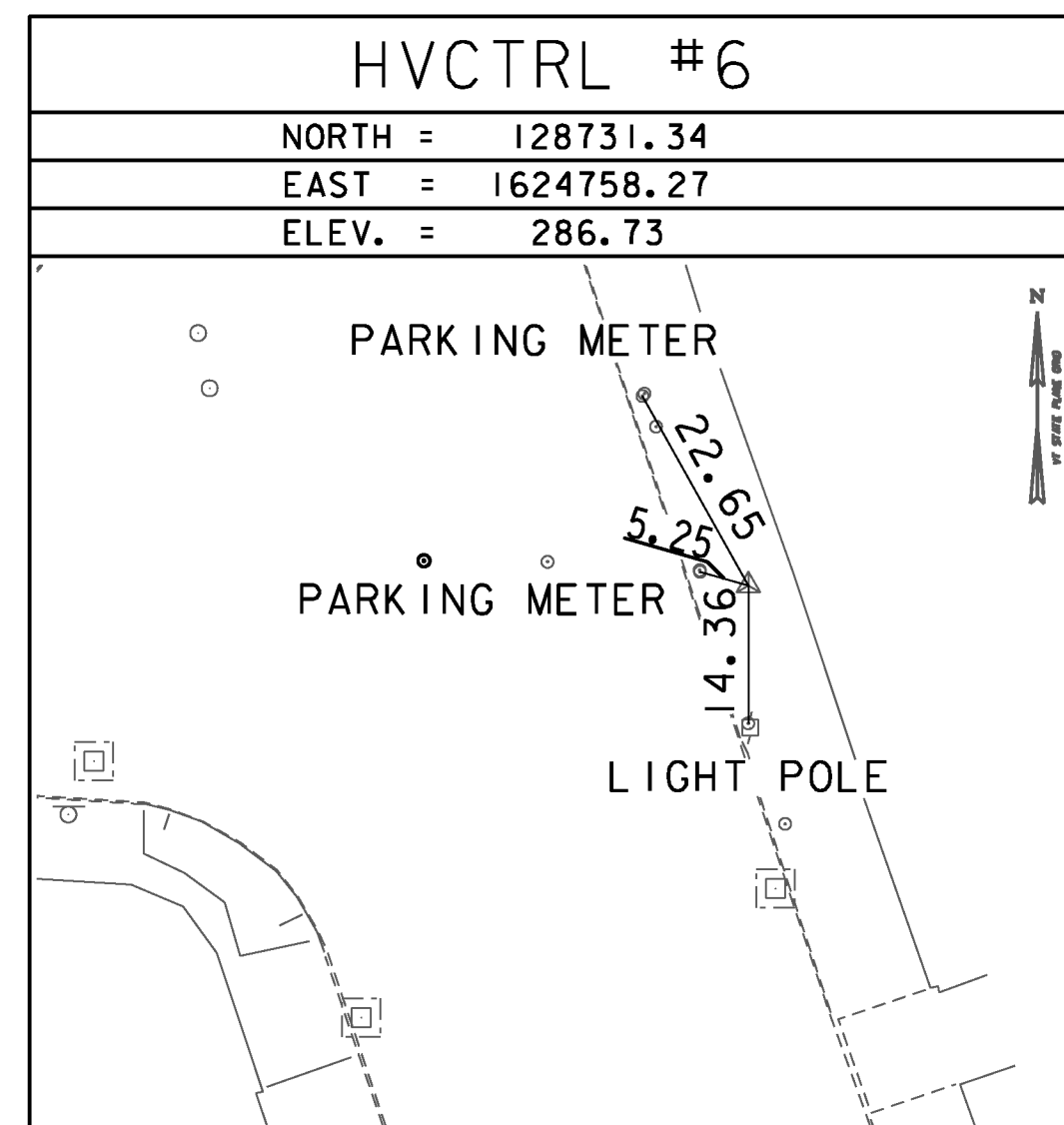
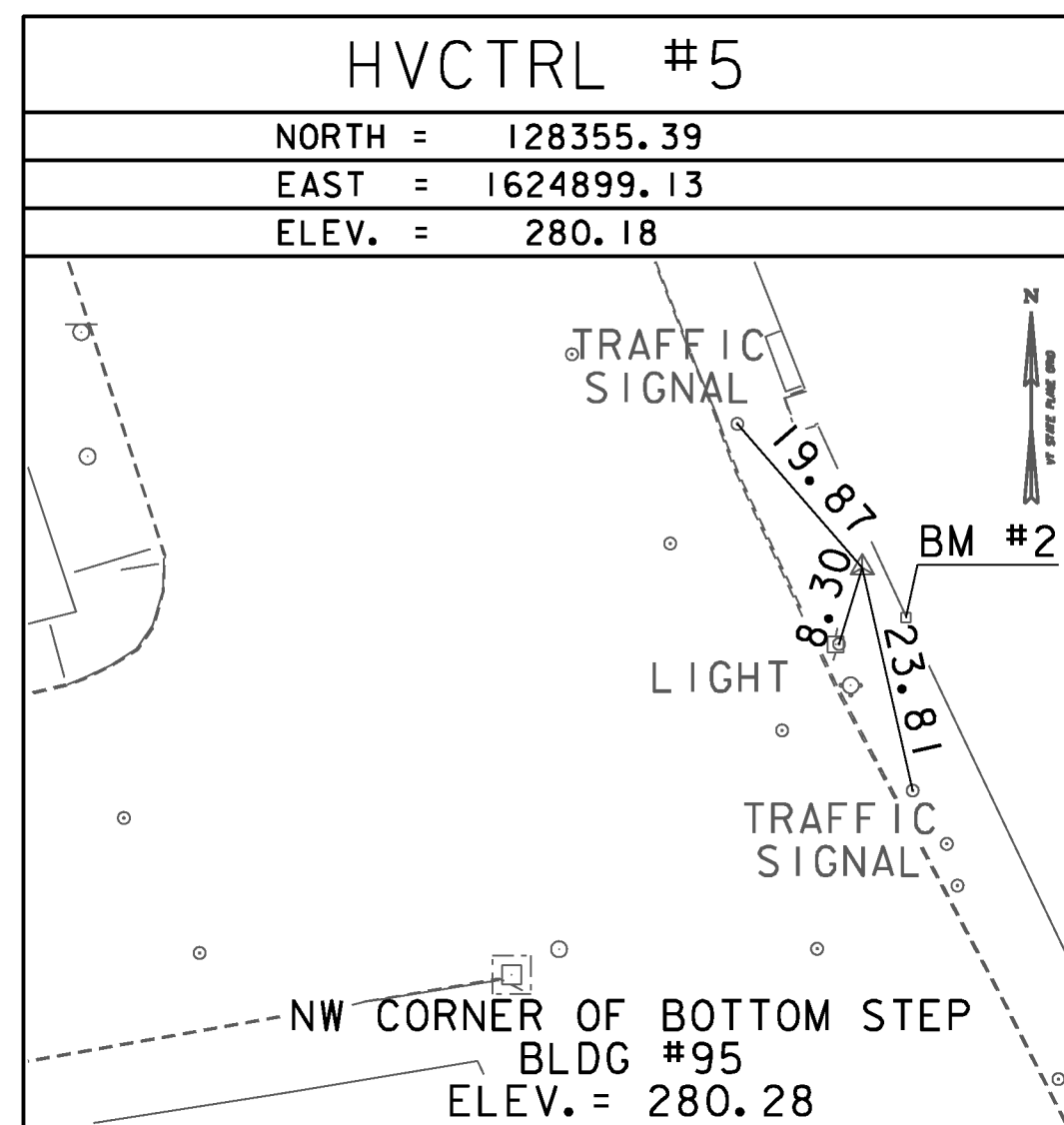
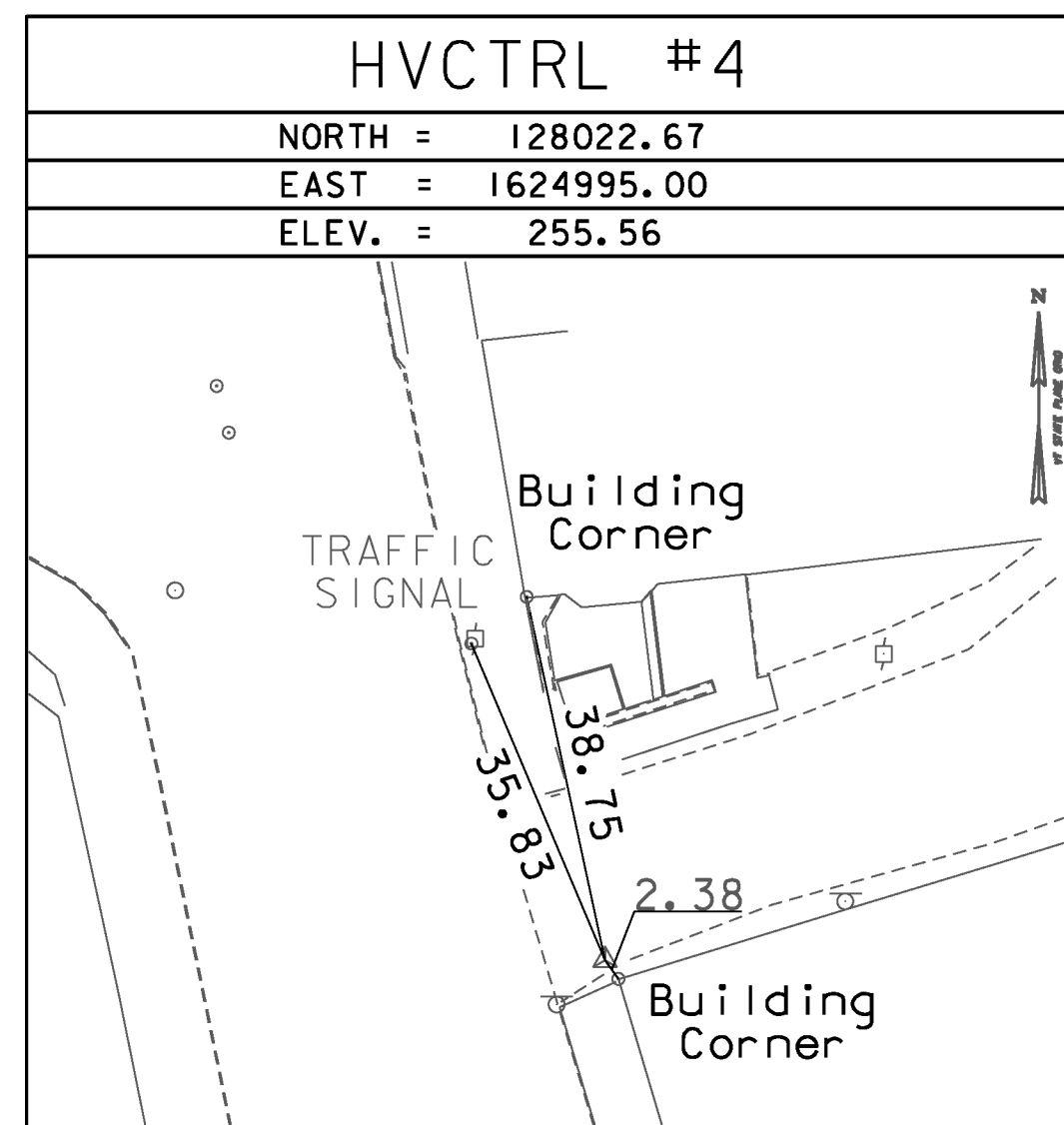
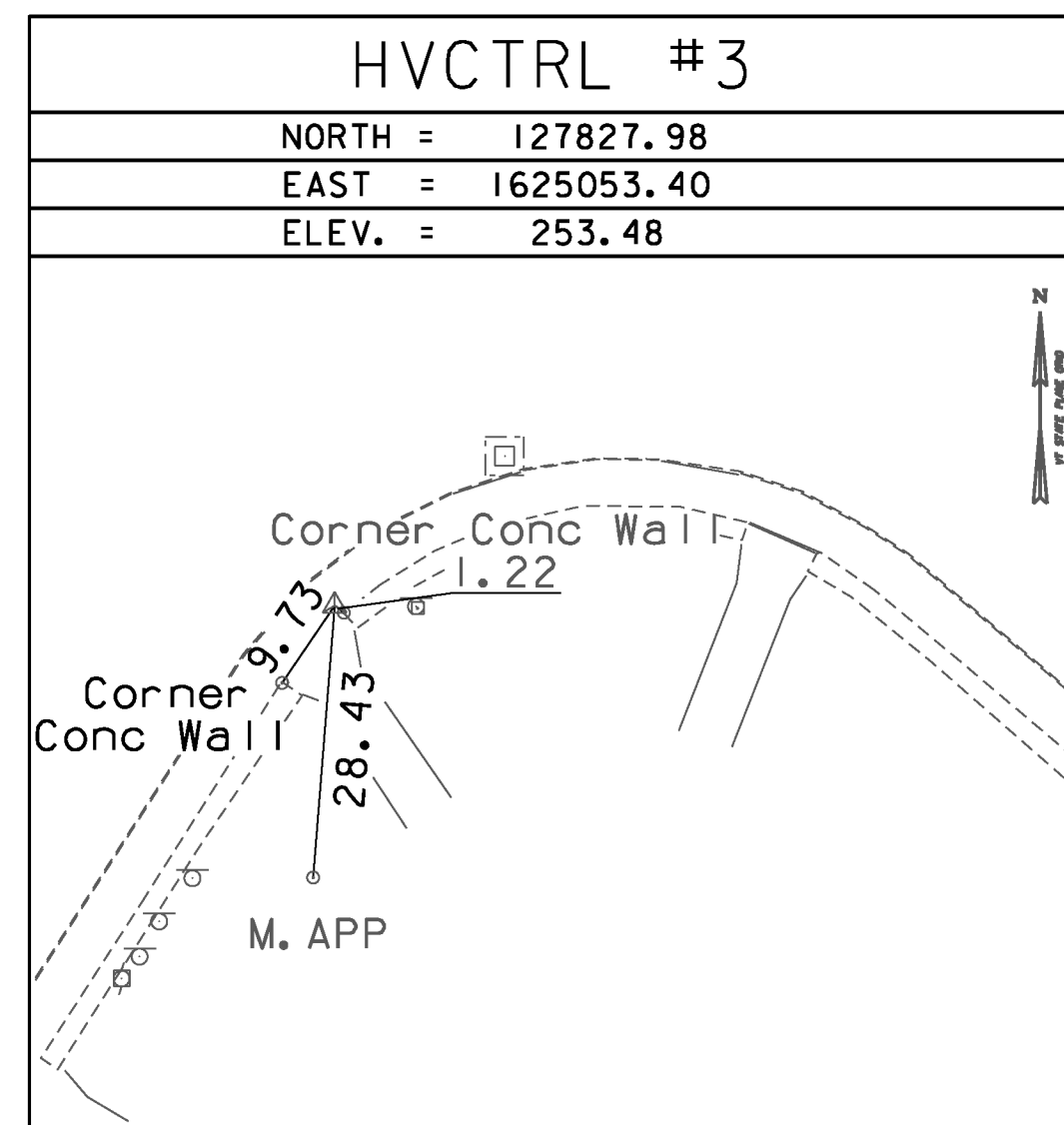
HVCTRL #1
 NORMS MARINA
 NORTH = 127076.872
 EAST = 1627293.409
 ELEV. = 328.083

HINSDALE, NEW HAMPSHIRE. TO REACH FROM THE JUNCTION OF VT ROUTE 9 AND VT ROUTE 119 IN BRATTLEBORO, VT PROCEED EASTERLY ALONG VT ROUTE 119 CROSSING OVER THE CONNECTICUT RIVER FOR 0.5 MI. (0.8 KM) TURN RIGHT AT NORMS MARINA AND PROCEED SOUTHERLY, TO THE RIGHT OF AN AUTO BODY SHOP AND ALONG THE CONNECTICUT RIVER TO THE MARK ON THE RIGHT. THE MARK IS SET IN THE TOP OF THE NORTHWEST CORNER OF A 4 FT (1.2 M) X 4 FT (1.2 M) X 4 FT (1.2 M) CONCRETE MASS FOR BOAT DOCKS. IT IS THE SECOND CONCRETE PAD SOUTH OF A PAVED BOAT LAUNCH. IT IS LOCATED 42 FT (12.8 M) SOUTH OF A 18 INCH MAPLE AND 33 FT (10.1 M) NORTHWEST OF A 12 INCH WHITE BIRCH.

HVCTRL #2
 RIVER VIEW
 NORTH = 128146.942
 EAST = 1625392.806
 ELEV. = 239.570

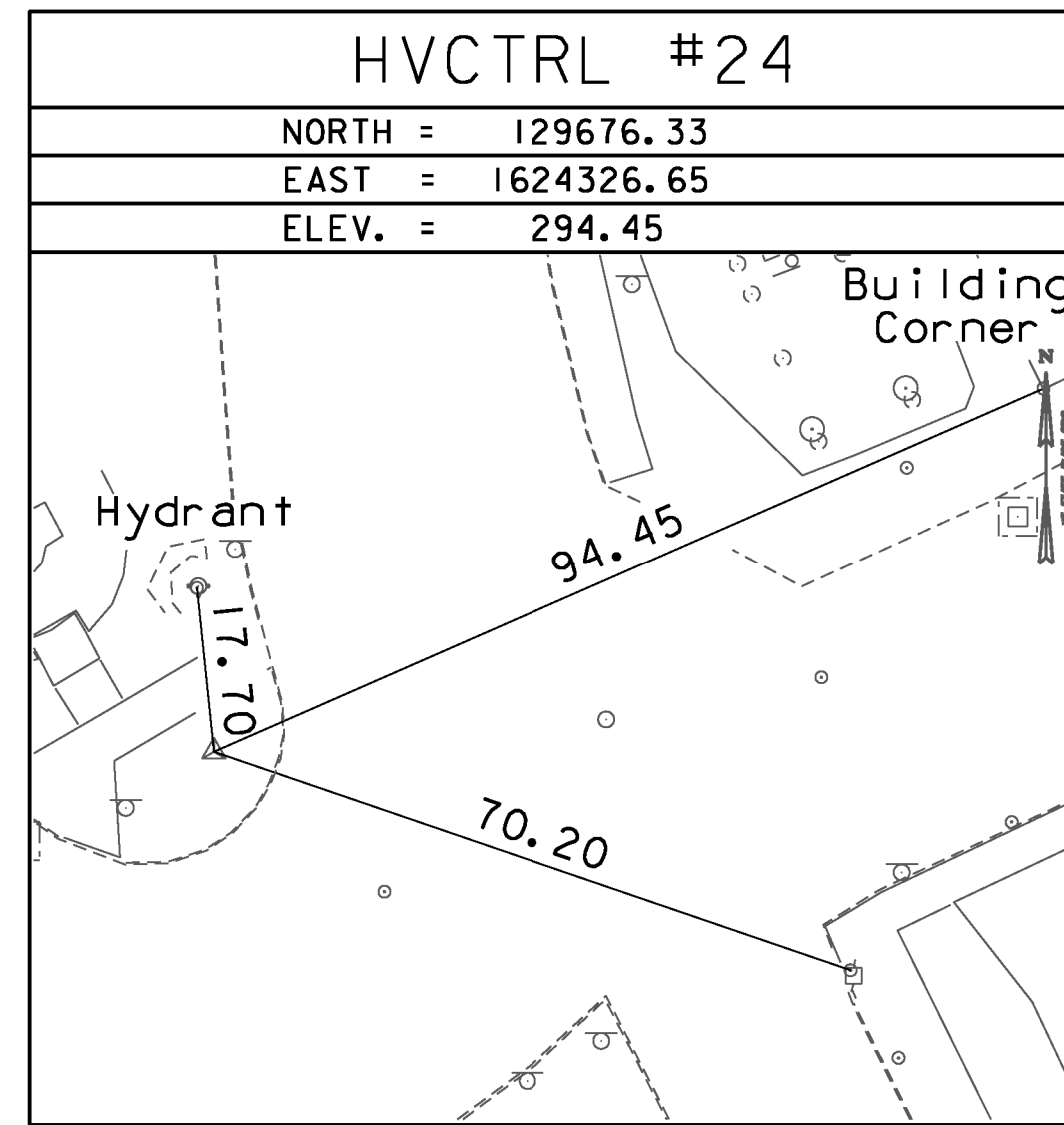
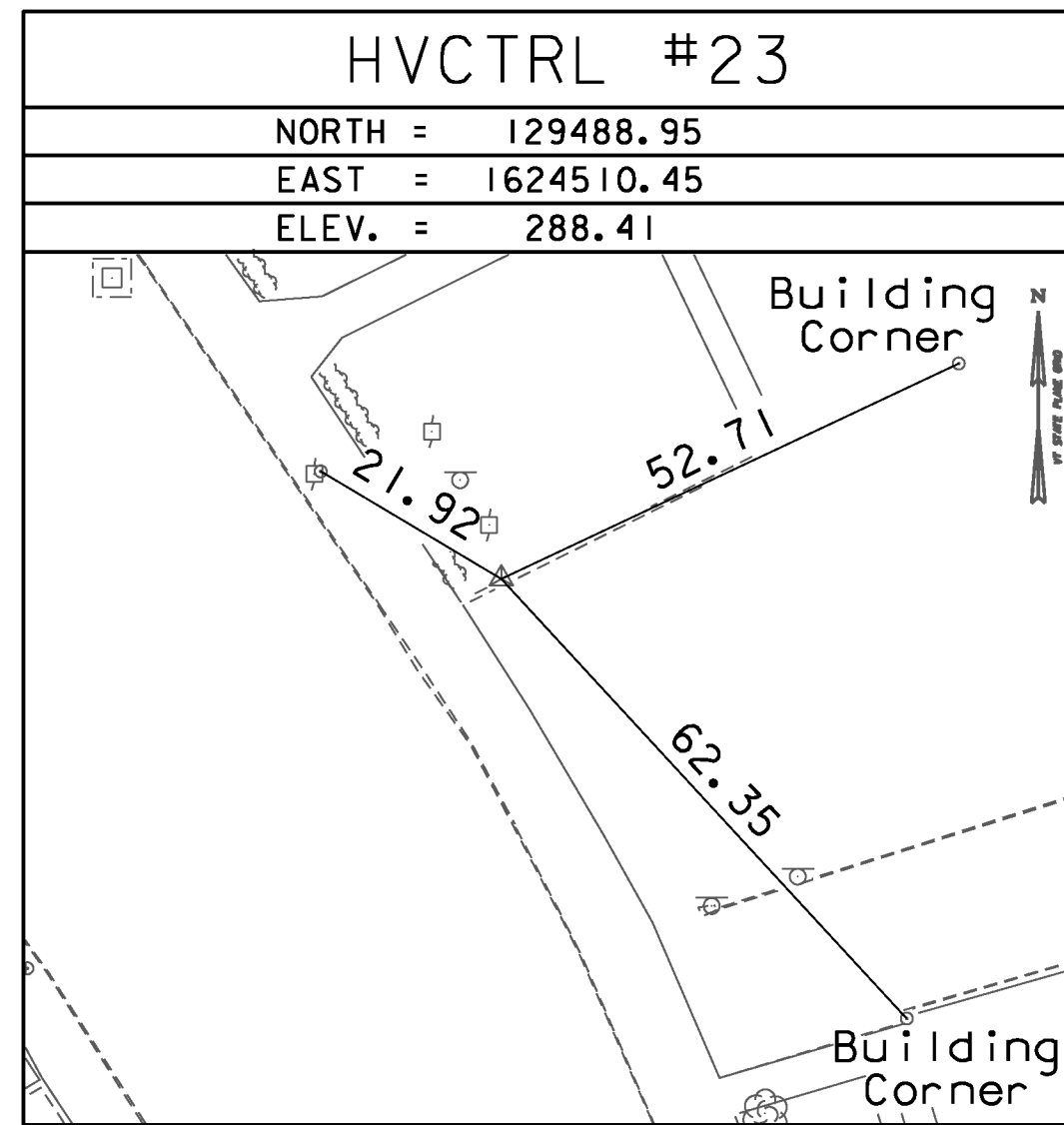
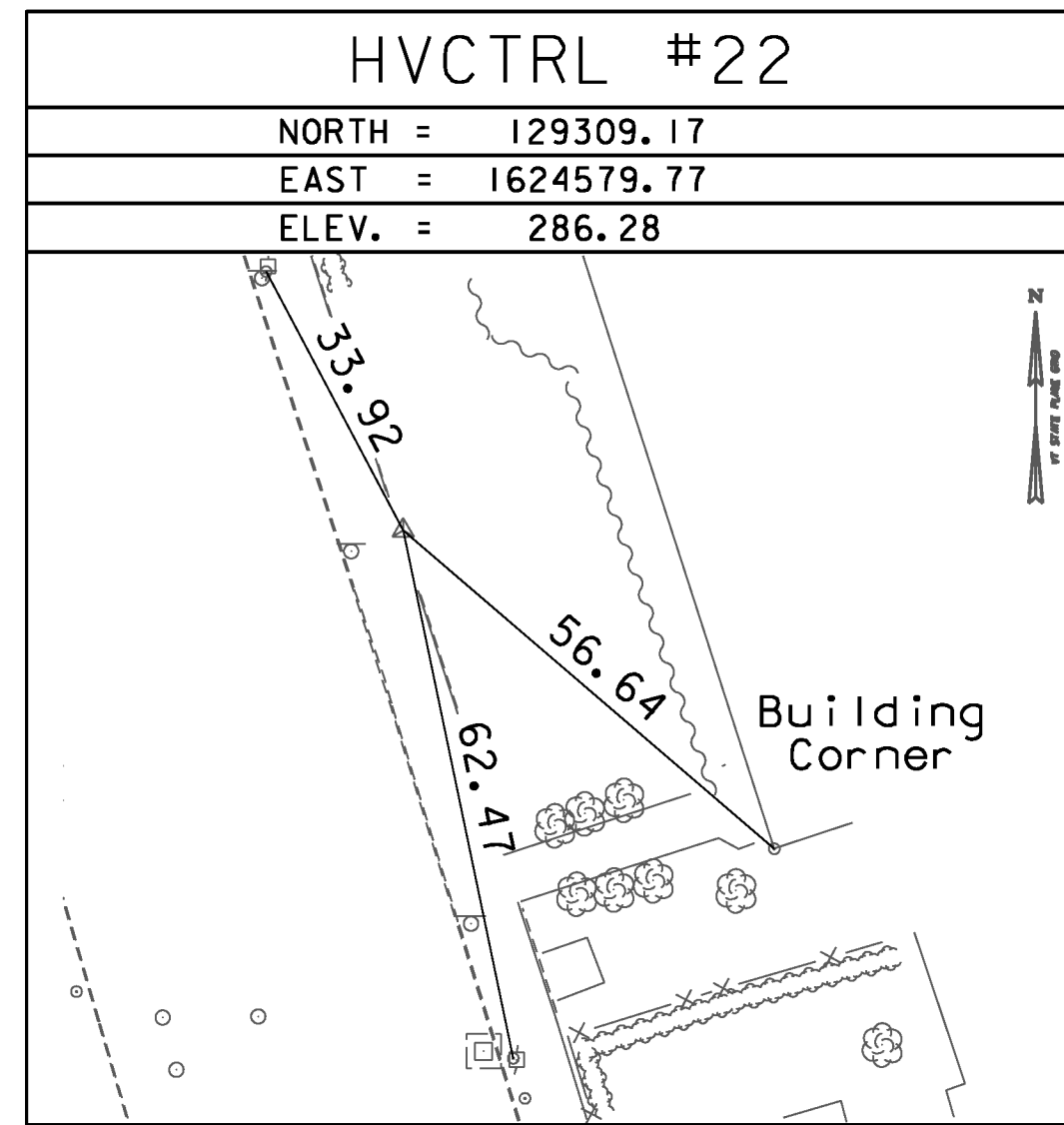
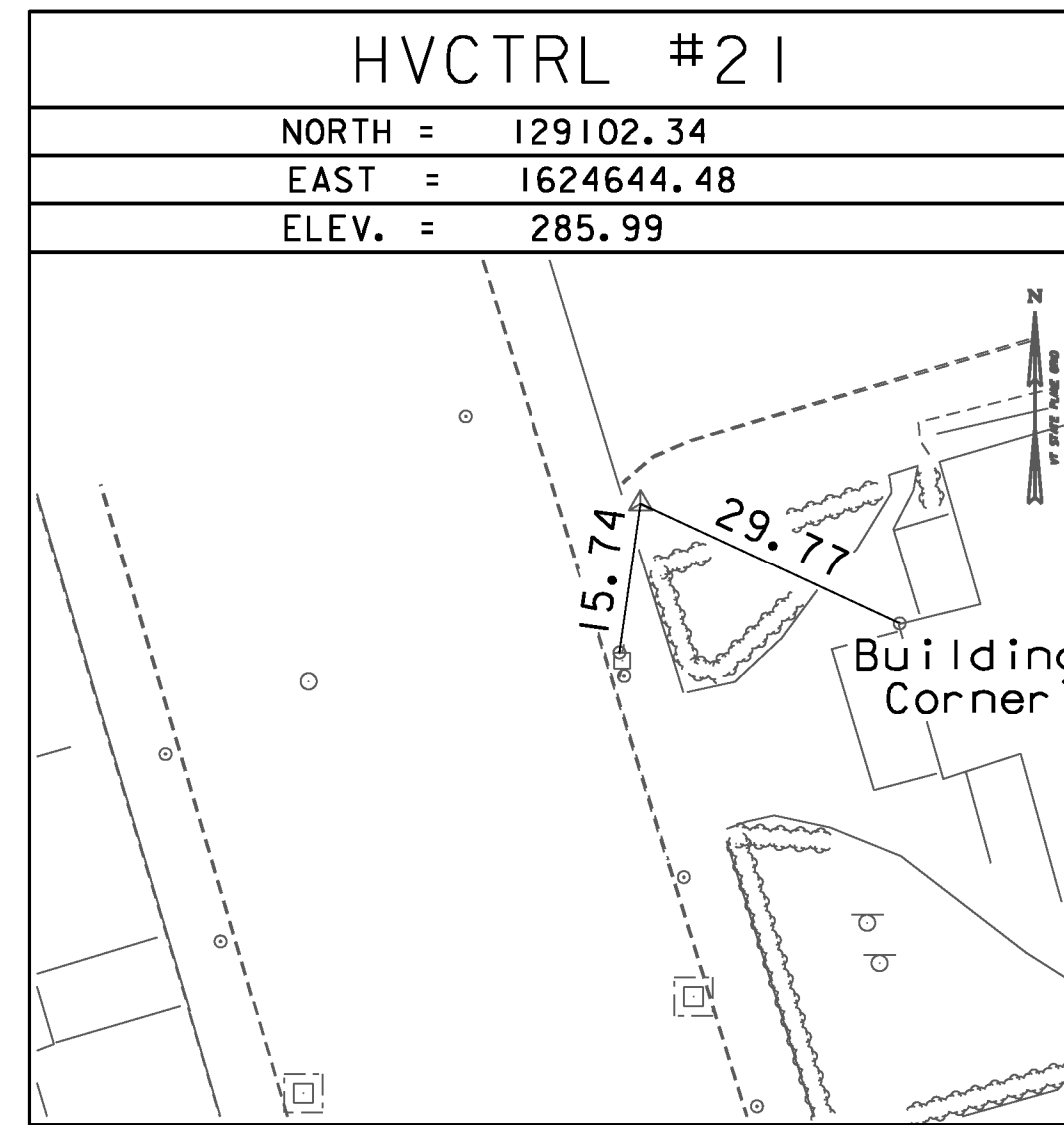
BRATTLEBORO, VT. TO REACH FROM THE JUNCTION OF VT ROUTE 9 AND VT ROUTE 119 IN BRATTLEBORO PROCEED EASTERLY ALONG VT ROUTE 119 FOR 0.10 MI (0.16 KM) TO A BRIDGE OVER THE CONNECTICUT RIVER AND THE MARK ON THE LEFT. THE MARK IS SET ON THE NORTH SIDE OF THE WESTERLY ABUTMENT BEFORE THE WOODEN WALK. IT IS 14.4 FT (4.4 M) NNW OF THE CENTERLINE OF VT ROUTE 119, 14.4 FT (4.4 M) ENE OF POLE 172 AND 8.4 FT (2.6 M) SSE OF THE SOUTHEAST CORNER OF A BUILDING (RIVERVIEW RESTAURANT).

TRAVERSE TIES



* Main Traverse Completed 6/12/96 by R.Gilman P.C. & T.Companion File was surveyed in Metric & then converted to feet under the PMS 96d026

TRAVERSE TIES



DATUM	
VERTICAL	NAVD 88
HORIZONTAL	NAD 83 (92)
ADJUSTMENT	Compass

PROJECT NAME: BRATTLEBORO	
PROJECT NUMBER: STP 2000(24)	
FILE NAME: z08d044+1.dgn	PLOT DATE: 3/16/2010
PROJECT LEADER: KEN UPMAL	DRAWN BY: R. BULLOCK
DESIGNED BY: VAOT	CHECKED BY: D. SPENCER
TIE SHEET 1	SHEET 93 OF 163